



PROVAC

SALES

PHONE: 831-462-8900

FAX: 831-462-3536

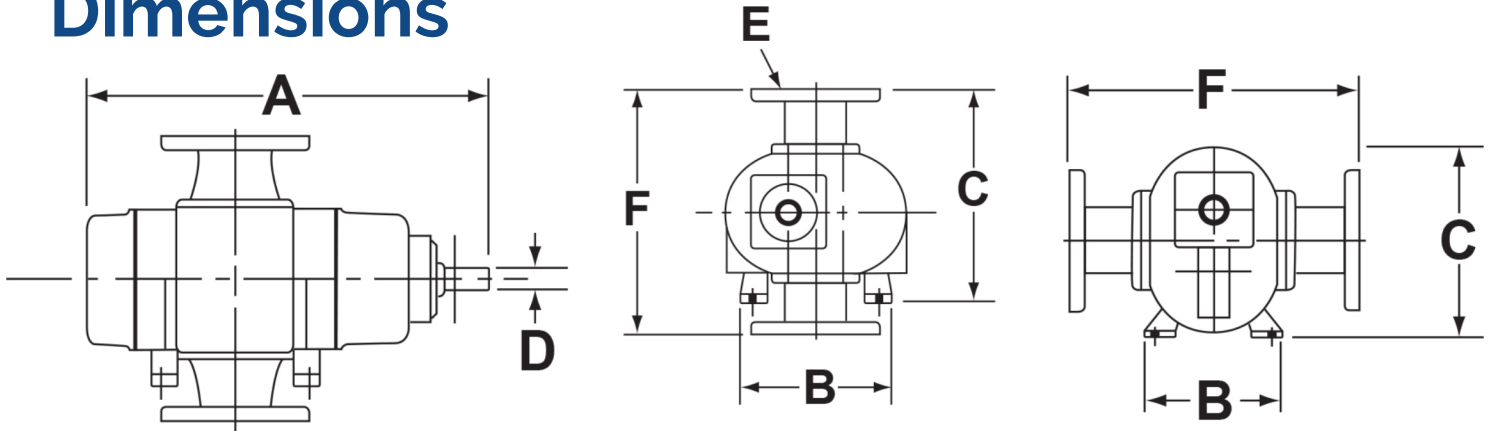
WWW.PROVAC.COM

MD Pneumatics 3200-7300

Technical Specifications

MODEL	SERIES	DISPL. CFM	A	B	C	D Ø	E	F
3200	V	800-3200	49.69	22.88	28.25	3.125	12" FLG	30.69
	H			13.81	32.69			
4200	V	1000-4200	54.59	22.88	28.25	3.125	12" FLG	30.69
	H			13.81	32.69			
5400	V	1400-5700	61.50	22.88	28.25	3.125	14" FLG	30.69
	H			13.81	32.69			
7300	V	1800-7400	70.19	22.84	28.24	3.125	16" FLG	30.70
	H			13.78	3.12			

Dimensions



MODEL	Net Wgt. (lbs.)*
3200	2050
4200	2350

MODEL	Net Wgt. (lbs.)*
5400	2560
7300	3250

*Approximate shipping weight.



PROVAC

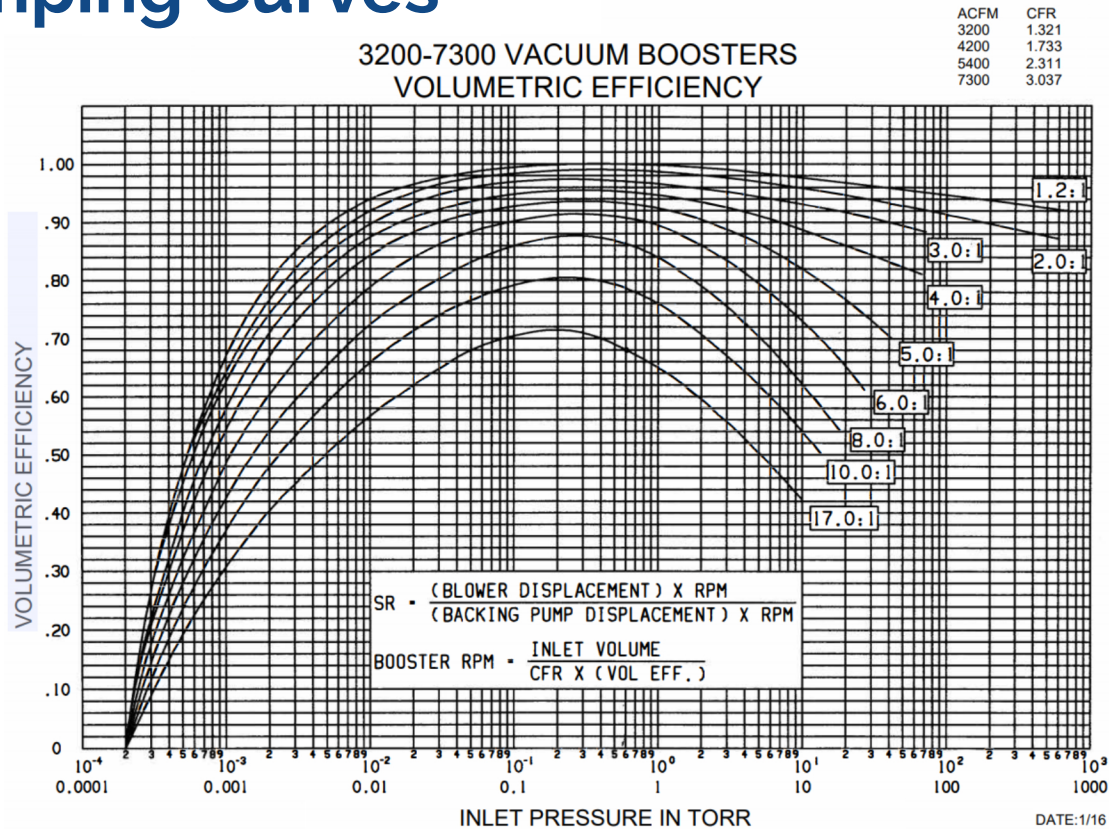
SALES

PHONE: 831-462-8900

FAX: 831-462-3536

WWW.PROVAC.COM

MD Pneumatics 3200-7300 Pumping Curves



Features & Benefits

- high-capacity gas volumes at high vacuum
- can be used in conjunction with all types of vacuum pumps
- designed to operate at 82 dB(A) or less at blank-off
- supplied with a heavy-duty drive shaft for either direct coupled or belt-driven applications

Applications

- supercharging vacuum systems • vacuum drying • dehydration
- packaging • distillation • vacuum furnace • increasing vacuum system capacities • reducing system ultimate pressures