

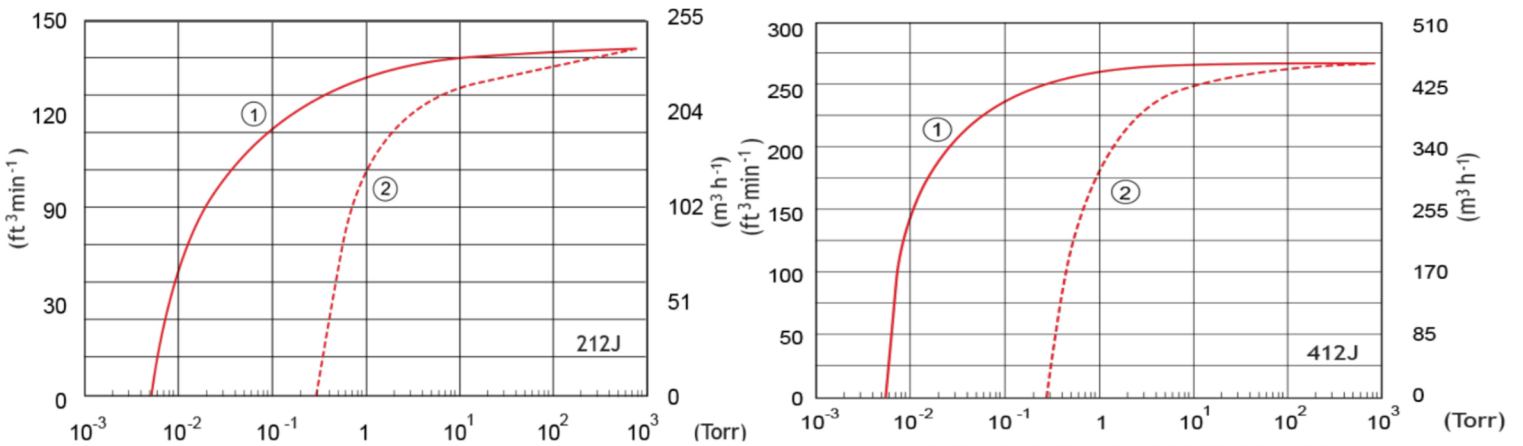


Edwards 212J, 412J, 612J

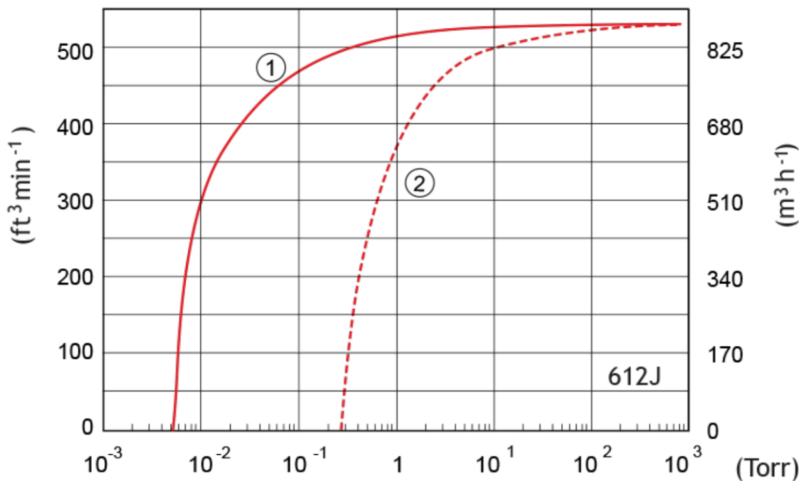
Technical Specifications

	Maximum pumping speed		Ultimate vacuum		Motor power				Overall dimensions			Noise level 50/60 Hz
	m ³ /hr (50 Hz)	cfm (60 Hz)	mbar	Torr	50 Hz		60 Hz		L	W	H	
					kW	Hp	kW	Hp	in	in	in	dB(A)
212 J	234	138	<3.3x10 ⁻²	<2.5x10 ⁻²	5.5	7.5	5.5	7.5	26.25	24	43.5	<77
412 J	442	260	<3.3x10 ⁻²	<2.5x10 ⁻²	11	15	7.7	10	40.25	25.63	1314	<85
612 J	884	520	<3.3x10 ⁻²	<2.5x10 ⁻²	11	15	7.7	10	43.75	70	56.63	<85

Pumping Curves



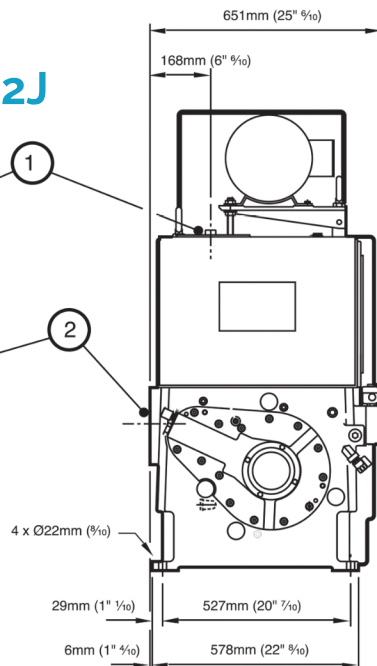
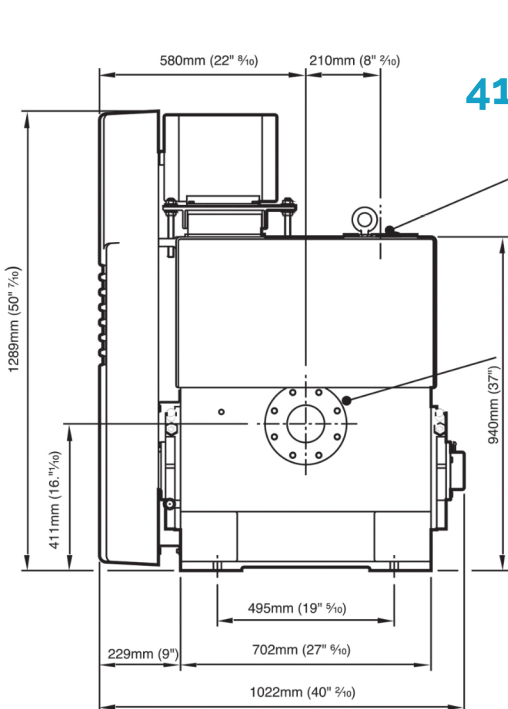
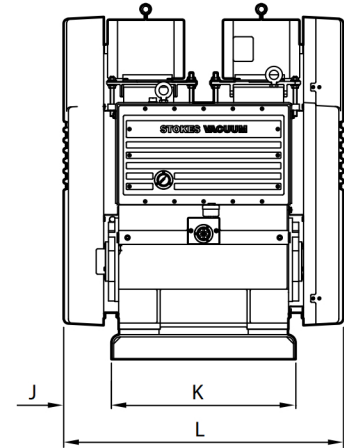
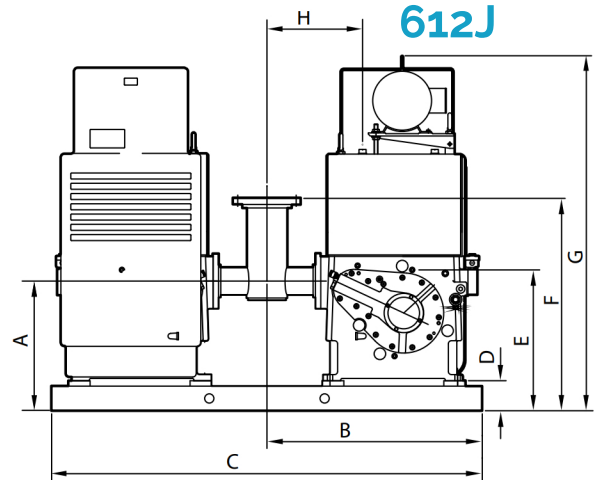
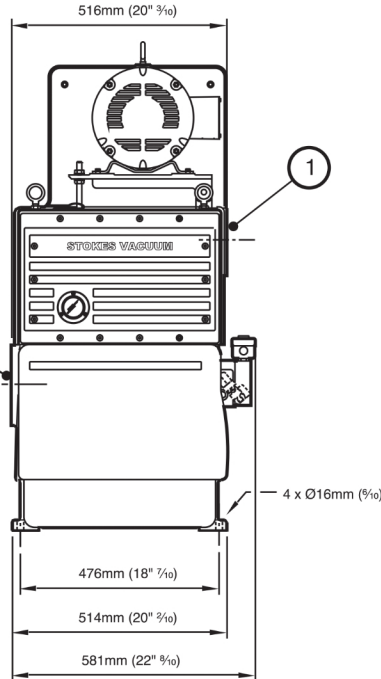
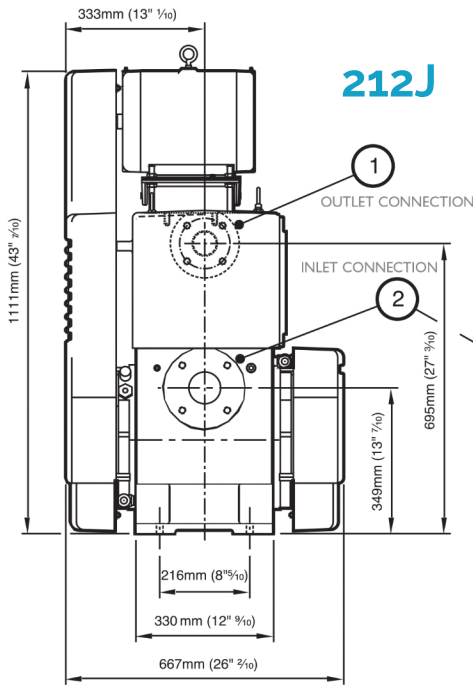
1 - Without gas ballast
2 - With gas ballast





Edwards 212J, 412J, 612J

Dimensions



A	B	C
535	889	1778
D	E	F
124	581	876
G	H	J
1464	394	197
K	L	
762	1156	



PROVAC

SALES

PHONE: 831-462-8900

FAX: 831-462-3536

WWW.PROVAC.COM

Edwards 212J, 412J, 612J

Features & Benefits

- low rotational speed enables longest pump life cycle
- robust, simple mechanism for high reliability & ease of rebuild
- choice of pumping combinations available to provide a wide range of vacuum pumping solutions
- maximum uptime with minimal moving parts & large clearance
- latest valve design virtually eliminates valve maintenance & reduces noise while requiring lower power
- space-saving design spares up to 50% of floor space
- complete & self contained unit delivered ready to install
- controlled balancing reduces vibration to a practical minimum
- automatic lubrication system provides proper flow of oil to bearings
- standard gas ballast

Applications

- automotive • leak detection • general applications • PET processing
- metallurgy • pharmaceuticals • vacuum coating • transformer drying
- vacuum melting • chemical processing • heat treatment