



# PROVAC

## SALES

PHONE: 831-462-8900

FAX: 831-462-3536

WWW.PROVAC.COM

# Welch 2052

## Technical Specifications

Parameter	Unit	Diaphragm pump - models	
		2054 (two-stage)	2052 (three-stage)
Free Air Displacement @ 60 Hz	CFM	3.5	2.3
	L / min	100	65
Ultimate pressure	mbar (Torr)	8 (6)	2 (1.5)
Ultimate pressure with gas ballast valve (1)		18	9
Max. inlet pressure	bar	1	
Max. outlet pressure		1	
IN - Intake connection (2)	standard	Small flange DN 16 KF	
	optional	Hose nozzle DN 8 for hose inside diameter 8 mm <i>(enclosed)</i>	
EX - Exhaust connection (3)	standard	Hose nozzle DN 8 for hose inside diameter 8 mm	
Ambient temperature	°C	+ 10 to + 40	
Max. operating gas temperature		+ 60	
Bearing	-	maintenance-free	
Reference surface sound pressure level DIN 45635 part 13	dB (A)	< 44	
Voltage	V	230; 115 <i>(generally with motor protection switch, switch and cable)</i>	
Frequency	Hz	50/60	
Power	W	370	
Operating mode	-	S 1	
Type of protection DIN EN 60529		IP 54	
Motor / Class of insulation DIN EN 600034-1		F (160°C)	
Weight	kg	18.3	
Dimensions (W/D/H) <i>(without connections)</i>	mm	230 / 380 / 169	
Order numbers for Diaphragm pumps inclusive mains connection cables IEC with:	-		
- 230 V Schuko and UK plug		2054C-02	2052C-02
- 115 V American plug		2054B-01	2052B-01



# PROVAC

## SALES

PHONE: 831-462-8900

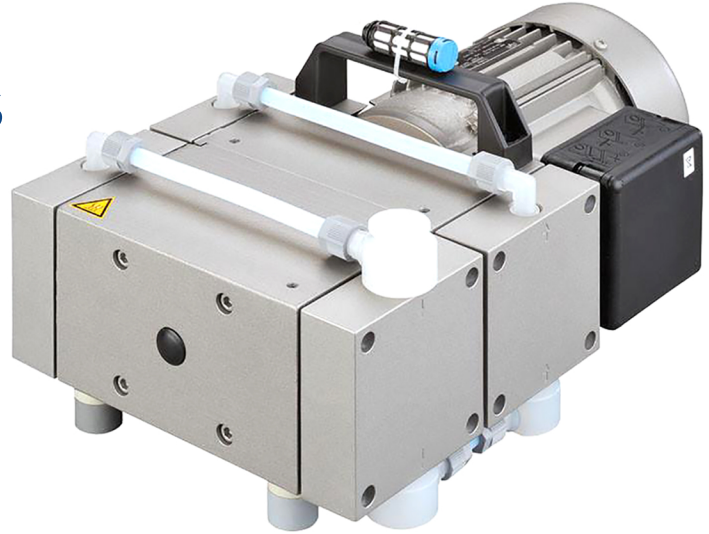
FAX: 831-462-3536

WWW.PROVAC.COM

## Welch 2052

### Features & Benefits

- fully chemically resistant
- oil & contamination free
- deep vacuum capability
- portable design
- less maintenance



### Applications

- rotary evaporation • vacuum filtration • vacuum oven / desiccation
- aspiration / automation • gel dryer • centrifugal concentrators
- distillation • degassing • general laboratory vacuum

### Dimensions

