

Zone settings

- Timer
- Heating stages*
- Lite Settings (access from Zone Navigation Menu)

- Capacitive buttons (tactile)
- Information icons

*Options available based on the installation and system configuration.





User Mode
(Eco, Vacation, Stop, Comfort, Unoccupied and Night)

Operation mode
(Cool, Heat, Auto, Emergency Heat* and Dry*)

Setting parameters

- Operation Mode*
- User Mode*
- Airflow control/Fan Speed*
- Heating stages*
- Local Ventilation
- Timer
- Information

Press to go back

Local ventilation

Home screen/Confirm

Airflow/Fan speed

Control bar

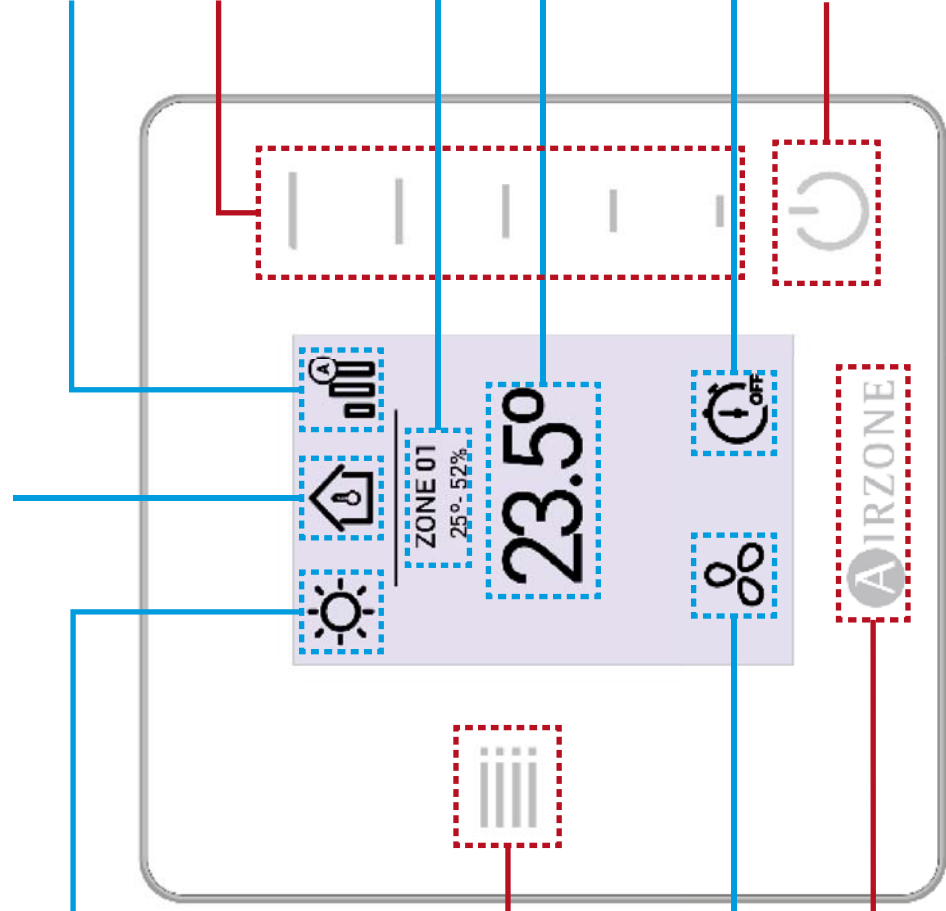
Adjusts the set-point temperature by pressing or sliding or selects the available parameters

Current zone / Current Room Temperature / Relative humidity

Current Set Point
Programmed temperature

Timer

On/Off



— Capacitive buttons (tactile)
— Information icons



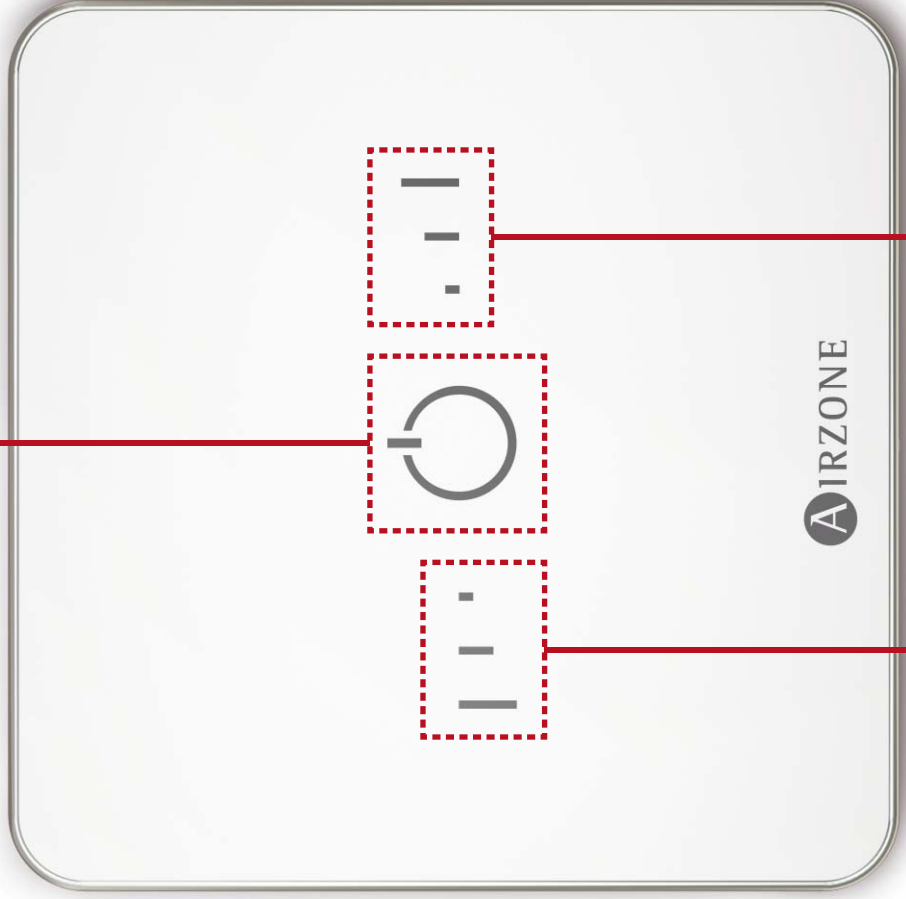
*Options available based on the installation and system configuration.



HEATING MODE, EMERGENCY HEAT STOP SET POINT TEMPERATURE REACHED COOLING MODE, DRY MODE

Airzone Lite Thermostat with capacitive buttons and RGB LED lights code

On/Off
Led indicator



Temperature setting:
lower temperature
-1°C / -2°C / -3°C
-2°F / -4°F / -6°F

Temperature setting:
raise temperature
+1°C / +2°C / +3°C
+2°F / +4°F / +6°F

— Capacitive buttons (tactile)

If the button remains solid
The zone is ON.

If the button is blinking
If it is blinking slowly. The zone is OFF.
It can be turned On by pressing the Led or from remote zones.
If it is blinking quickly in red or purple there is an error.
It can be consulted on the Blueface or at the Airzone Clud app.

If the led is Off
The zone is in energy saving mode. On Wireless Lite, this mode is set by default. On Wired Lite, it can be configured in the Lite Settings parameter through Zone Navigation Menu on any Blueface thermostat or through the Airzone Cloud Webserver.

The current set point temperature is the programmed temperature for the zone. You can modify it through the Temperature Control icons, starting from the current set point temperature, which will be imposed by the user mode selected for the system.

