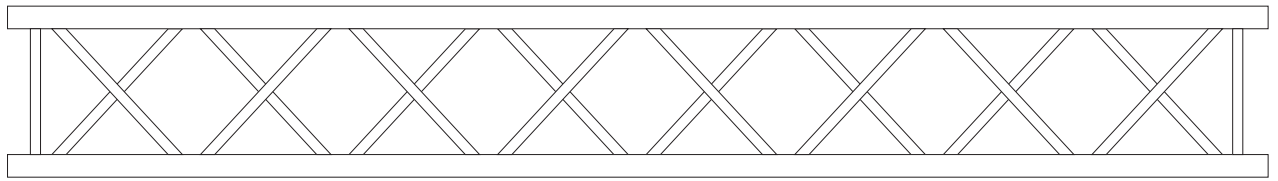
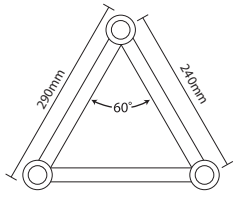


290mm Tri Truss Data Sheet



3m example shown above.

CERTIFICATIONS AND COMPLIANCE

Report No: 20143565M01

Independent Inspection & Testing Company: Alfa Test (ISO17025 & Nata Accreditation)

Location of Test: Alfa Test, Brisbane Laboratory, Qld

STATIC LOAD TEST & RESULTS

Test Procedure: TP 230

Test Spec: TP 230

Requirements: Uniformly loaded with 20.3kg weights at 1-meter increments & Centre point loaded with 121.6kg weights.

Tested length: Uniformly loaded over 12m span, Centre point loaded over 12m span.

Test Results: PASS

PRODUCT SPECIFICATION

Description: Aluminium Tri Truss System 300 x 300mm (Industry standard 290 truss)

Brand: Titan AV

Model Number: TR-ST30

Product Specification:

- Connecting Cross Section: 240mm x 240mm
- Material (Main Tube, Brace & End connector): Aluminium 6082-T6
- Main Tubes: 50mm x 2 mm
- Braces: 20mm x 2mm

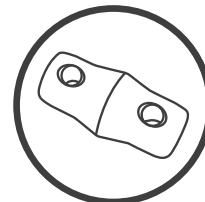


TITAN AV 290MM TRI TRUSS ALLOWABLE LOADING* (TR-ST30)

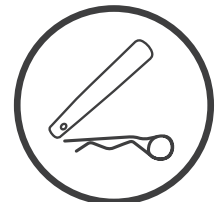
Span	Uniformly Distributed Load (UDL)	Deflection	Centre Point Load (CPL)	Deflection
M	KG/M	MM	KG	MM
1	243.6	9.4	233.0	6.3
2	121.8	18.8	222.9	12.7
3	81.2	28.2	212.8	19.0
4	60.9	37.6	202.6	25.3
5	48.7	47.1	192.5	31.7
6	40.6	56.5	182.4	38.0
7	34.8	65.9	172.3	44.3
8	30.5	75.3	162.1	50.6
9	27.1	84.7	152.0	57.0
10	24.4	94.1	141.9	63.3
11	22.1	103.5	131.7	69.6
12	20.3	113.0	121.6	76.0

TITAN AV 290MM TRI TRUSS PRODUCT RANGE

VFM Part ID	Length	Weight of Length	Approved For Rigging
TR-ST30-050	0.5 m	5.0 kg	Y
TR-ST30-100	1.0 m	6.0 kg	Y
TR-ST30-150	1.5 m	8.0 kg	Y
TR-ST30-200	2.0 m	10.0 kg	Y
TR-ST30-250	2.5 m	12.0 kg	Y
TR-ST30-300	3.0 m	15.0 kg	Y



3 x Spigots included as standard



6 x Clips and Pins included as standard

* PLEASE NOTE: Load table information is supplied as a guide only. Please consult your structural engineer for advice related to your application.