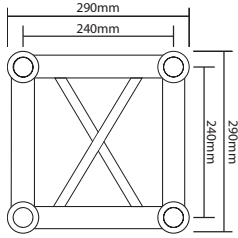


290mm Cube Truss Data Sheet

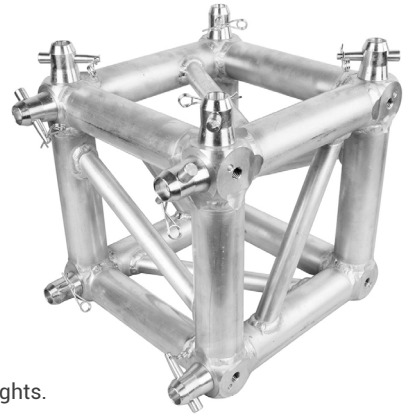


Certifications and compliance

Report No: 20181619M02
 Independent Inspection & Testing Company: Alfa Test (ISO17025 & Nata Accreditation)
 Location of Test: Alfa Test, Brisbane Laboratory, Qld

Static load test & results

Test Procedure: TP 230
 Test Spec: TP 230
 Requirements: Uniformly loaded with 58kg weights at 1-meter increments & Centre point loaded with 324kg weights.
 Tested length: Uniformly loaded over 12m span, Centre point loaded over 12m span.
 Test Results: PASS



Product specification

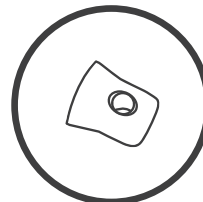
Description: Aluminium Box Truss System 300 x 300mm (Industry standard 290 truss)
 Brand: Titan AV
 Model Number: TR-SQ30-CB
 Product Specification:
 • Connecting Cross Section: 240mm x 240mm
 • Material (Main Tube, Brace & End connector): Aluminium 6082-T6
 • Main Tubes: 50mm x 3 mm
 • Braces: 25mm x 2mm

Titan AV 290mm Box Truss Allowable Loading* (TR-SQ30)

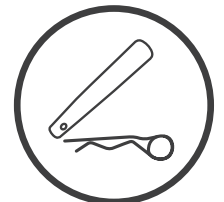
Span	Uniformly Distributed Load (UDL)	Deflection	Centre Point Load (CPL)	Deflection
M	KG/M	MM	KG	MM
1	700	10.1	611.0	8.0
2	350	11.0	585.0	8.8
3	233	12.2	559.0	9.7
4	175	13.5	533.0	10.7
5	140	15.3	507.0	12.1
6	117	17.4	481.0	13.8
7	100	20.3	455.0	16.2
8	88	24.4	429.0	19.4
9	78	30.5	403.0	24.3
10	70	40.6	377.0	30.0
11	64	61.0	351.0	48.5
12	58	122.0	325.0	97.0

Titan AV 290mm Cube Truss Product Range

VFM Part ID	Length	Weight of Length	Approved For Rigging
TR-SQ30-CB	0.3 m	8.2 kg	Y



8 x Half Spigots included as standard



16 x Clips and Pins included as standard

* PLEASE NOTE: Load table information is supplied as a guide only. Please consult your structural engineer for advice related to your application.



Unit 8, 50 Raubers Road Banyo QLD 4014
 P: (07) 3423 3463
 E: sales@vfmgroup.com.au
 W: www.vfmgroup.com.au