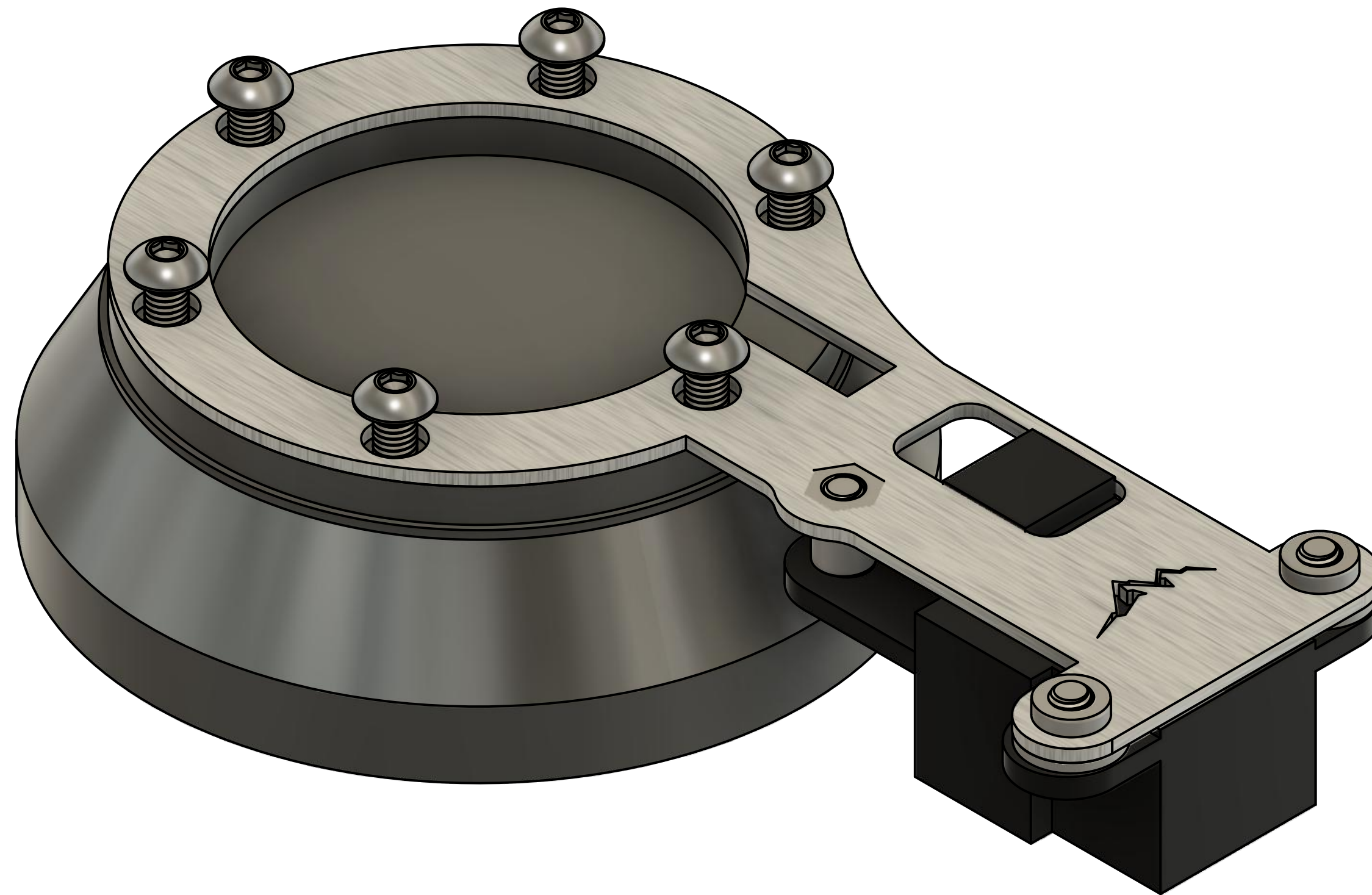




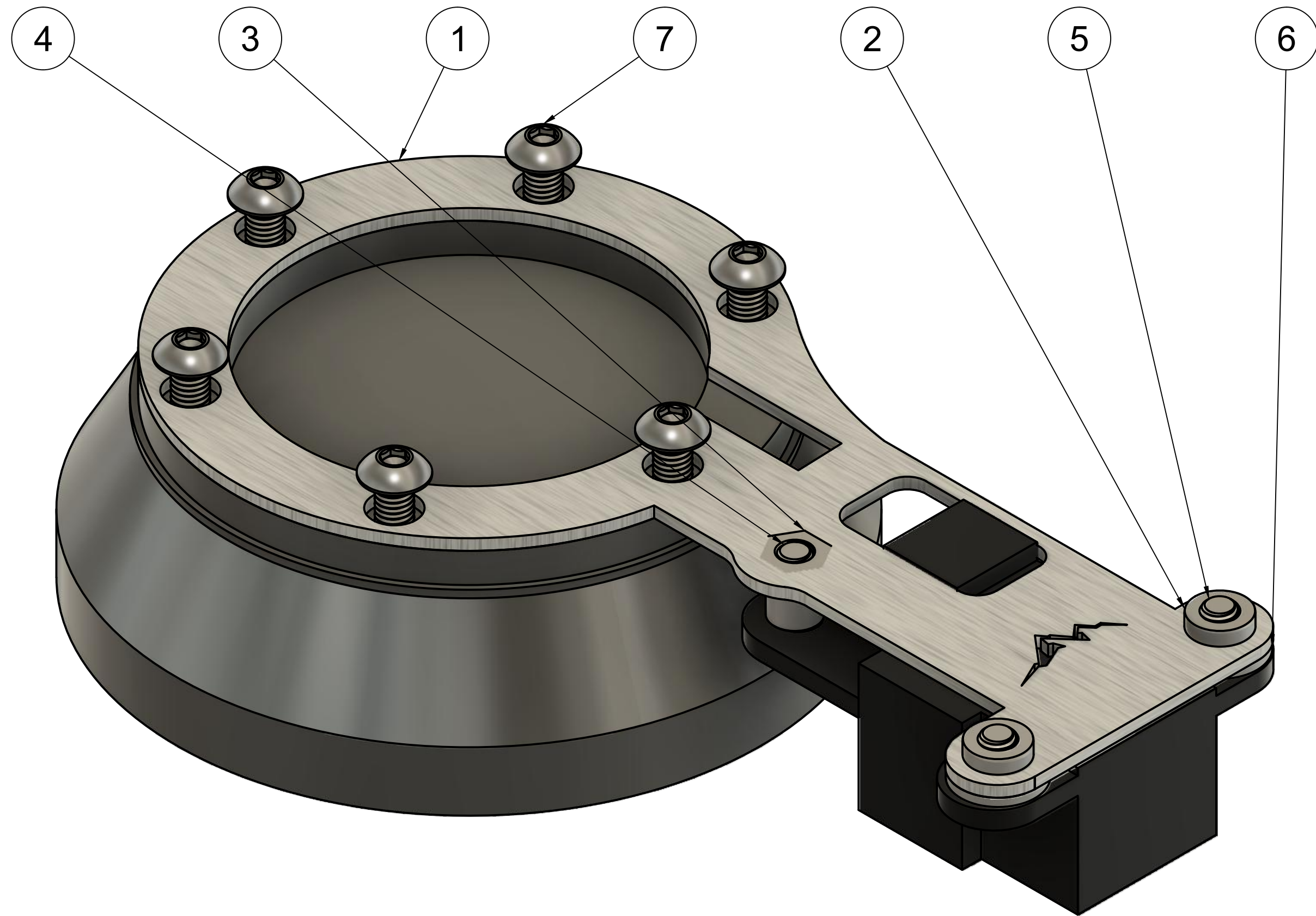
Cruise Control Kit for 07-10
Jeep Wrangler with NRG Quick Disconnect



REV	DESCRIPTION	DATE	APPROVED
REVISION HISTORY			



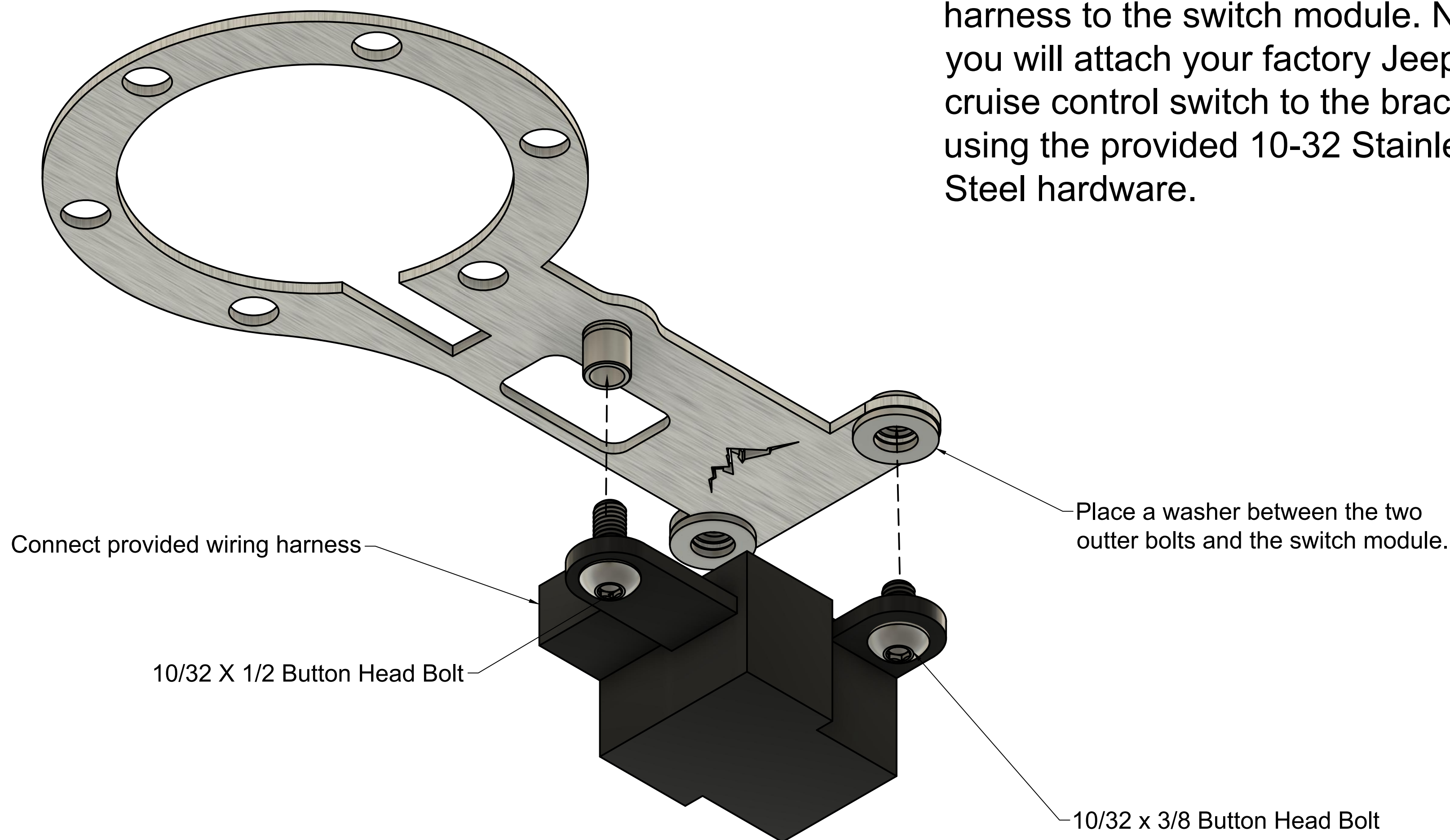
Parts List



PARTS LIST		
ITEM	QTY	PART NUMBER
1	1	BRACKET
2	2	95185A185_ZINC-PLATED STEEL PRESS-FIT NUT FOR SHEET METAL
3	1	93090A118_PRESS-FIT THREADED STANDOFFS
4	1	92949A265_18-8 STAINLESS STEEL BUTTON HEAD HEX DRIVE SCREW
5	2	92949A263_18-8 STAINLESS STEEL BUTTON HEAD HEX DRIVE SCREW
6	2	90183A325_WASHER FOR BLIND RIVETS
7	6	92949A267_18-8 STAINLESS STEEL BUTTON HEAD HEX DRIVE SCREW

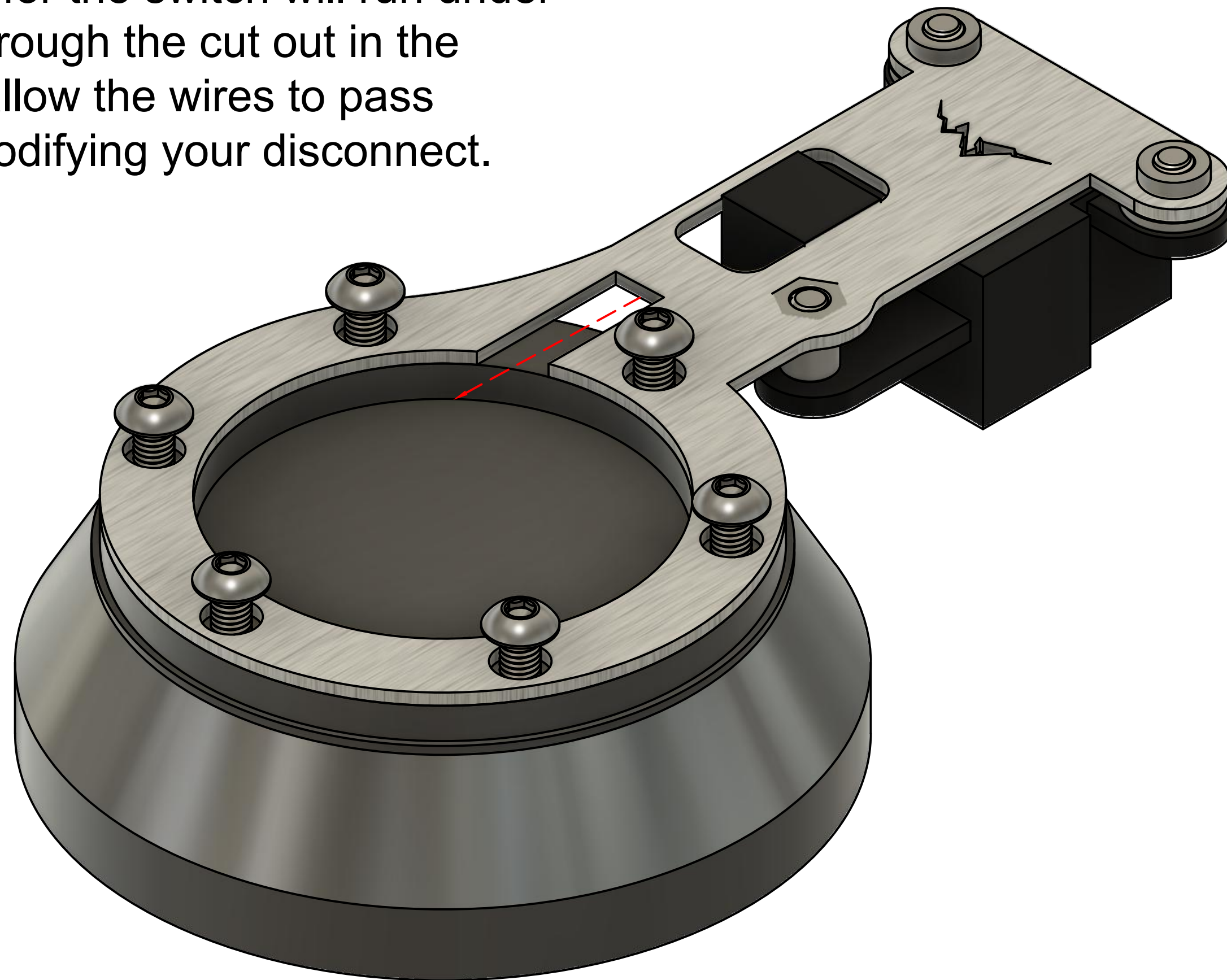
STEP 1

Start by first connecting the provided harness to the switch module. Next you will attach your factory Jeep cruise control switch to the bracket using the provided 10-32 Stainless Steel hardware.



STEP 2

With the switch module bolted to the bracket, you will now bolt the adapter to the NRG mount. The wiring for the switch will run under the bracket and through the cut out in the bracket. This will allow the wires to pass through without modifying your disconnect.



Your NRG steering wheel mount will stack on top of the cruise control bracket. Make sure you connect the new harness to the factory harness before closing it up.



Congrats! Your cruise control is now installed.

For any technical issues, please contact us at
info@mountainoffroadfab.com

