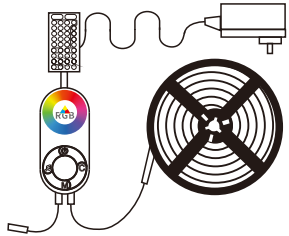


Smart Wifi LED Strip Lights



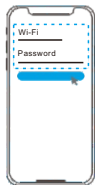
Mode No:STP-04-RGBIC-WIFI
User Manual



Download on the App Store
GET IT ON Google play

Connecting the Strip Light to the App

- 1 Turn on Wi-Fi in your mobile phone;
- 2 Open Smart Life app and tap "+" icon in the top right corner;
- 3 Select the "Lighting" page and tap the "strip lights of Wi-Fi" to connect.
- 4 Select a 2.4GHz Wi-Fi to connect or skip the setup.



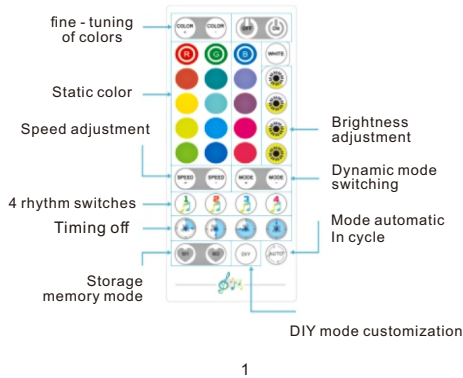
Controlling Your Strip Light with Alexa/google Assistant

- 1 Wi-Fi Setting
Make sure the strip has connected to Wi-Fi; If not, please follow steps below to set up Wi-Fi.

WiFi Controller Box



IR Remote Controller



- a. Open the app, select the strip light that has been added and tap setting icon in the top right corner;
 - b. Tap "Wi-Fi Setting", select a Wi-Fi available and enter password.
- Notice:** Only support 2.4Ghz and 802.11 b/g/n Wi-Fi network.
- 2 Works with Alexa
 - a. Open the app, select the strip light that has been added and tap setting icon in the top right corner;
 - b. Tap "Using guidance" and follow on-screen instructions to complete setup.

Troubleshooting

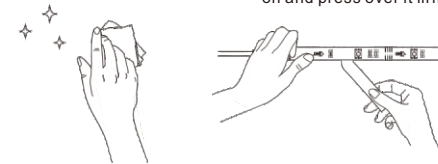
- 1 The adhesive tape is not strong enough.
 - a. Make sure the installation surface is clean and dry.
 - b. Firmly press over the strip after sticking.
 - c. Reinforce the installation via more dips and tapes.
- 2 Cannot connect to Bluetooth.
 - a. Do not skip Bluetooth connection in the app.
 - b. Make sure Bluetooth in your mobile phone has been turned on.
 - c. It may be caused by incompatibility between the phone system and the app. Please change a mobile phone and connect again.

Installing Your Strip Light

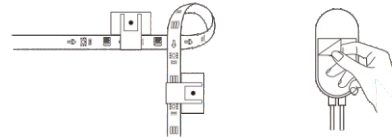
- 1 Preparation Before Installing
 - a. Unpack the box and check all items listed in the packing list;
 - b. Connect the control box to the adapter;
 - c. Power on the strip light and check whether it lights up.

2 Installing Steps

- a. Wipe the surface to keep it clean and dry;
- b. Peel off the protective film on the tape, stick the strip on and press over it firmly.



- c. Reinforce via clips around corners;
- d. Peel off the protective film on the control box and stick it on;



- d. Re-power on the strip and re-turn on Bluetooth in your phone to try again.
- e. Keep the distance between the strip and the phone less than 1m/3.28ft while connecting.
- f. Keep obstructions between the strip and the phone as few as possible.

- 3 The strip doesn't match the same color, /Some lamp beads don't light up.
Please contact Stripoo support team in time for return.

- 4 Cannot connect to Wi-Fi
 - a. Do not skip the step of Wi-Fi connecting in the app.
 - b. 5GHz network is not supported. Please set the router to 2.4GHz and then reset it.
 - c. Connect your phone to Wi-Fi and check whether the network is normal.
 - d. Make sure you have entered the correct Wi-Fi name and password.
 - e. Change your Wi-Fi password to a brief one. 8 numbers and letters are suggested.
 - f. Connect hot spot in your phone to the strip light and check whether the router works with the strip light.

- 5 Cannot sync to the music beat.
 - a. please keep the control box close to the sound source.
 - b. Clean up the sound picking hole on the control box

Note: remember to pull out the tiny transparent plastic plate off the remote control so that it will work with the strip lights.

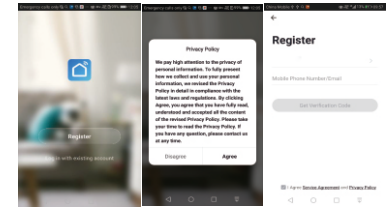
Software Manual

Download and Install App
Use your phone to scan the QR code below or search "Smart Life" in application market to download and install the App



Register/Login/Forget password

Register your account by following guidelines for the first time use. Input your account number and password to log in. Enter the login page to retrieve your password in case you forget it.



- 6 Cannot connect to the Alexa.
 - a. Pull out every connective part of the strip light and firmly re-connect them.
 - b. Re-connect your phone to Wi-Fi.
 - c. Plug out the dapter port and re-plug it in.
- 7 The strip light doesn't work.
 - a. Pull out every connective part of the strip light and firmly re-connect them.
 - b. Tap On/Off button on the control box or app to check whether it is strip quality issue.

Customer Service

- 8 Warranty: 12-Month Limited Warranty
- 9 Email: support@Stripoo.com
- 10 Official Website: www.Stripoo.com