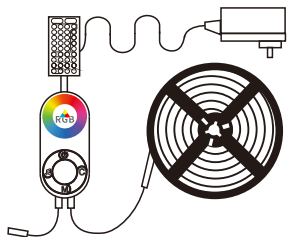


Bluetooth LED Strip Lights



Mode No:STP-02-RGBIC-BLUETOOTH

User Manual



Download on the App Store

GET IT ON Google play

Connecting the Strip Light to the App

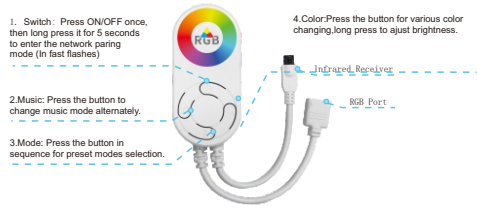
- 1 Turn on Bluetooth in your mobile phone;
- 2 Open Smart Life app and tap "+" icon in the top right corner;
- 3 Select the "Lighting" page and tap the "strip lights of Bluetooth" to connect.



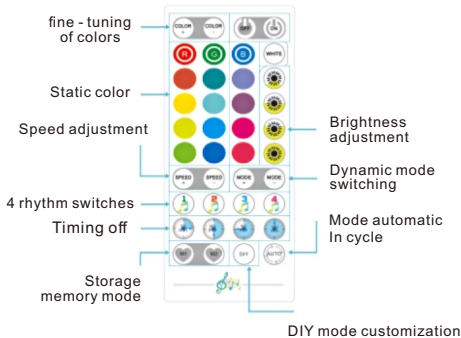
Controlling Your Strip Light with Alexa/google Assistant

- 1 Bluetooth Setting
Make sure the strip has connected to Bluetooth; If not, please follow steps below to set up.

Bluetooth Controller Box



IR Remote Controller



- 2 Works with Alexa
 - a. Turn on the Bluetooth both on of your smartphone and voice control device.
 - b. Pair up your smartphone with the voice control device via Bluetooth connection.

Troubleshooting

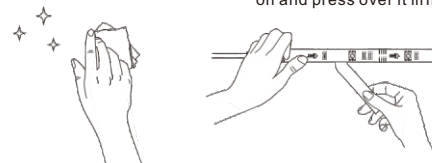
- 1 The adhesive tape is not strong enough.
 - a. Make sure the installation surface is clean and dry.
 - b. Firmly press over the strip after sticking.
 - c. Reinforce the installation via more dips and tapes.
- 2 Cannot connect to Bluetooth.
 - a. Do not skip Bluetooth connection in the app.
 - b. Make sure Bluetooth in your mobile phone has been turned on.
 - c. It may be caused by incompatibility between the phone system and the app. Please change a mobile phone and connect again.
 - d. Re-power on the strip and re-turn on Bluetooth in your phone to try again.
 - e. Keep the distance between the strip and the phone less than 1m/3.28ft while connecting.
 - f. Keep obstructions between the strip and the phone as few as possible.

Installing Your Strip Light

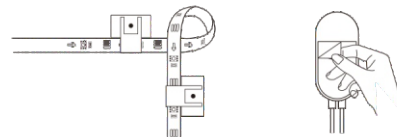
- 1 Preparation Before Installing
 - a. Unpack the box and check all items listed in the packing list;
 - b. Connect the control box to the adapter;
 - c. Power on the strip light and check whether it lights up.

2 Installing Steps

- a. Wipe the surface to keep it clean and dry;
- b. Peel off the protective film on the tape, stick the strip on and press over it firmly.



- c. Reinforce via clips around corners;
- d. Peel off the protective film on the control box and stick it on;



- 3 The strip doesn't match the same color,/Some lamp beads don't light up.
Please contact Stripoo support team in time for return.

- 4 Cannot connect to Wi-Fi
 - a. Do not skip the step of Wi-Fi connecting in the app.
 - b. 5GHz network is not supported. Please set the router to 2.4GHz and then reset it.
 - c. Connect your phone to Wi-Fi and check whether the network is normal.
 - d. Make sure you have entered the correct Wi-Fi name and password.
 - e. Change your Wi-Fi password to a brief one. 8 numbers and letters are suggested.
 - f. Connect hot spot in your phone to the strip light and check whether the router works with the strip light.

- 5 Cannot sync to the music beat.
 - a. please keep the control box close to the sound source.
 - b. Clean up the sound picking hole on the control box

- 6 Cannot connect to the Alexa.
 - a. Pull out every connective part of the strip light and firmly re-connect them.
 - b. Re-connect your phone to Wi-Fi.
 - c. Plug out the dapter port and re-plug it in.

Note: remember to pull out the tiny transparent plastic plate off the remote control so that it will work with the strip lights.

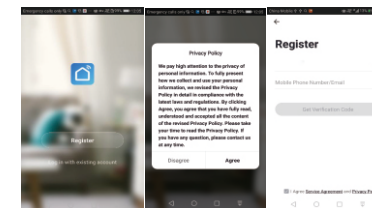
Software Manual

Download and Install App
Use your phone to scan the QR code below or search "Smart Life" in application market to download and install the App



Register/Login/Forget password

Register your account by following guidelines for the first time use. Input your account number and password to log in. Enter the login page to retrieve your password in case you forget it.



- 7 The strip light doesn't work.
 - a. Pull out every connective part of the strip light and firmly re-connect them.
 - b. Tap On/Off button on the control box or app to check whether it is strip quality issue.

Customer Service

- 📞 Warranty: 12-Month Limited Warranty
- ✉ Email: support@Stripoo.com
- 🌐 Official Website: www.Stripoo.com