

GZH32KM

GZ Roll-To-Roll LED UV printer!

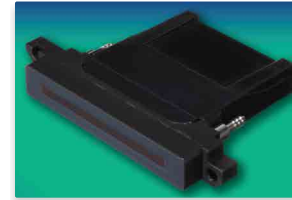


- ◆ Up to 20 Konica 1024i/1024a high-speed print heads.
- ◆ Dual water cooling LED UV lamps are effective and energy saving.
- ◆ Negative pressure system assures stable ink supply and nozzle jetting.
- ◆ White ink stirring system prevents print head clogging & enables stable printing.
- ◆ 4 Pneumatic rubber rollers and air shaft for steady and accurate media delivery.
- ◆ Delta servo system assures quiet, stable & accurate carriage movement.
- ◆ Water cooling printing platen offers wrinkle-free delivery for the temperature sensitive materials.

ITEM	SPECIFICATION			
Model	GZH32KM			
Print Head	4~20 Konica 1024i/Konica 1024a print heads			
Head Config.	1xCMYK 1xCMYK+W 1xCMYKLcLm 1xCMYKLcLm+W	2xCMYK 2xCMYK+W 2xCMYKLcLm 2xCMYKLcLm+W	3xCMYK 3xCMYK+W 3xCMYKLcLm 3xCMYKLcLm+W	
Curing System	LED UV curing system			
Ink	UV curable ink			
Colors	Standard: CMYKLcLm, Optional: W			
Ink Supply System	Negative pressure system + White ink stirring system			
Cleaning System	Positive Purging System			
Servo System	AC motor with speed reducer			
Media System	4 rubber rollers supported by air cylinders along the beam			
Media Type	Backlit, Banner Flex, Canvas, Mesh Paper, Synthetic Paper, PVC, Reflective Film, Sticker, Tarpaulin, Textile, Vinyl, Wall coverings.			
Media Width	Max. 3200mm			
Printing Width	Max. 3200mm			
Printing Speed	Konica 1024a	Resolution	1 group head	2 groups heads
	Draft	480x1080dpi	m ² /h	m ² /h
	Production	480x1440dpi	m ² /h	m ² /h
	Quality	480x2160dpi	m ² /h	m ² /h
	Hi-Precision	480x2880dpi	m ² /h	m ² /h
	Konica 1024i	Resolution	1 group head	2 groups heads
	Draft	540x1080dpi	m ² /h	m ² /h
	Production	540x1440dpi	m ² /h	m ² /h
Quality	540x2160dpi	m ² /h	m ² /h	
Hi-Precision	540x2880dpi	m ² /h	m ² /h	
Data Interface	USB3.0			
Working Environment	Temperature: 20°C~28°C, Humidity: 40%~70%			
Software	Onyx...+GZ Printer Manager			
Image Format	Bitmap, TIF, Quark Xpress, JPEG, EPS, PDF			
Power	Single-phase, 50/60Hz, AC220V±10%, 10A, Regulator: 10kVA			
Dimension (Installed/Packed)	6050x1410x1850mm(Printer); 670x480x880mm/740x530x900mm(Water cooling unit)			
Weight(N.W./G.W.)	2500kgs/3000kgs(Printer); 70kgs/75kgs(Water cooling unit);			

*Specifications are liable to change without prior notice.

Main Features



Konica 1024i/1024a print heads



Negative Pressure System



Rubber Roller Feeding System



Air Shaft



Water cooling platen



LED UV lamp & Anti-collision unit

Linea 146 S.A. de C.V.

ADD: Castilla #54, Centro de Azcapotzalco, Azcapotzalco, C.P. 02000, CDMX

RFC: LCC190308QA4

Tel: (+5255) 1742 2166 ó 67

E-mail: ventas@faunadigital.com

Website: www.linea146.com



Ver 2024.01.18

Authorized distributor:

