

TIE & DYE CATALOG

Reach us at www.suvehah.com

suvehah

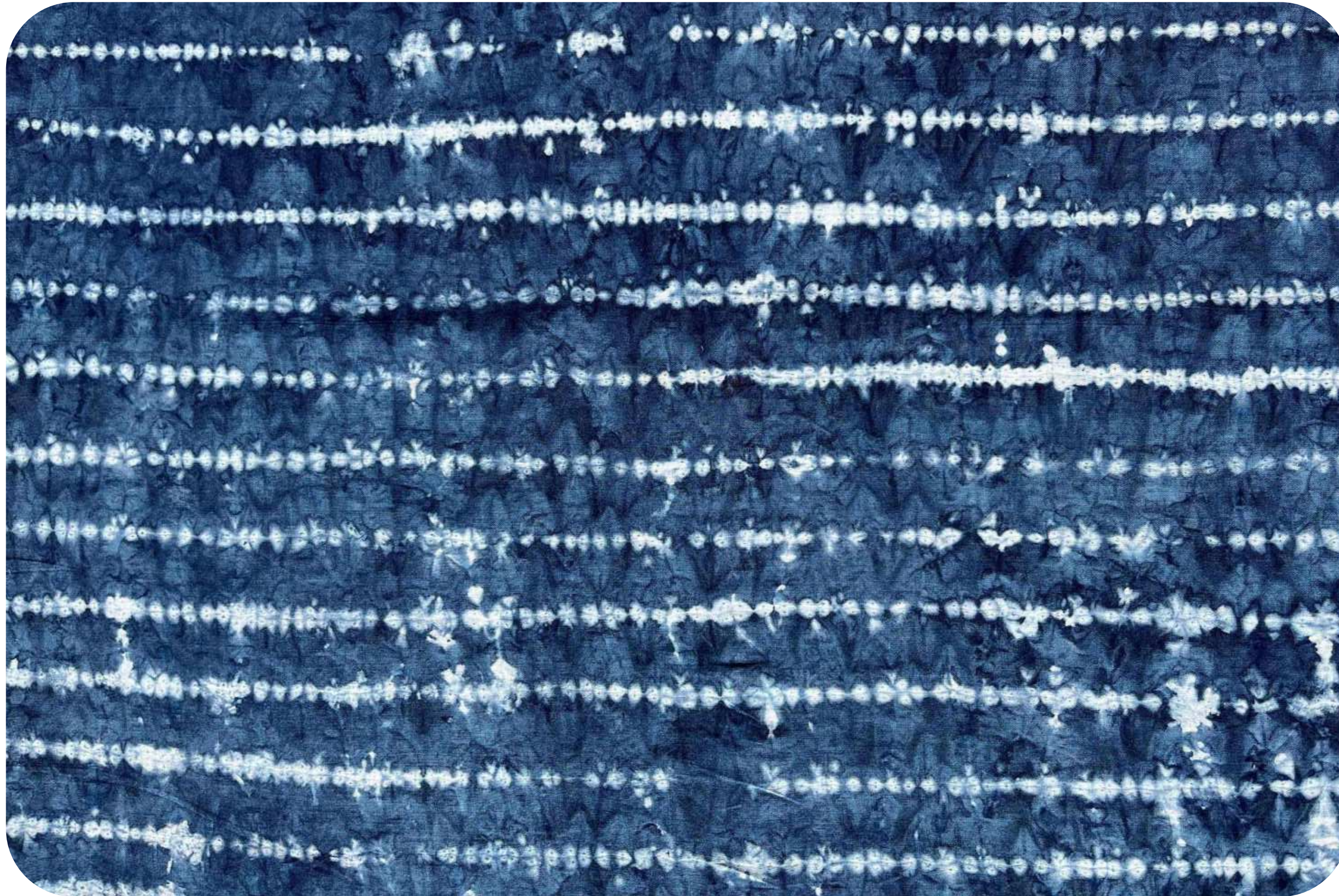


Celestial Sphere

Technique- Shibori

Rs 60/- per mtr Tying
+ dyeing (additional)

s u v ē t a h



Orion

Technique- Shibori

Rs 100/- per mtr Tying
+ dyeing (additional)

s u v ē t a h



Cassiopeia

Technique- Shibori

Rs 80/- per mtr Tying
+ dyeing (additional)

s u v ē t a h



Canis

Technique- Shibori

Rs 120/- per mtr Tying
+ dyeing (additional)

s u v ē t a h



Phoenix

Technique- Shibori

Rs 120/- per mtr Tying
+ dyeing (additional)

s u v ē t a h



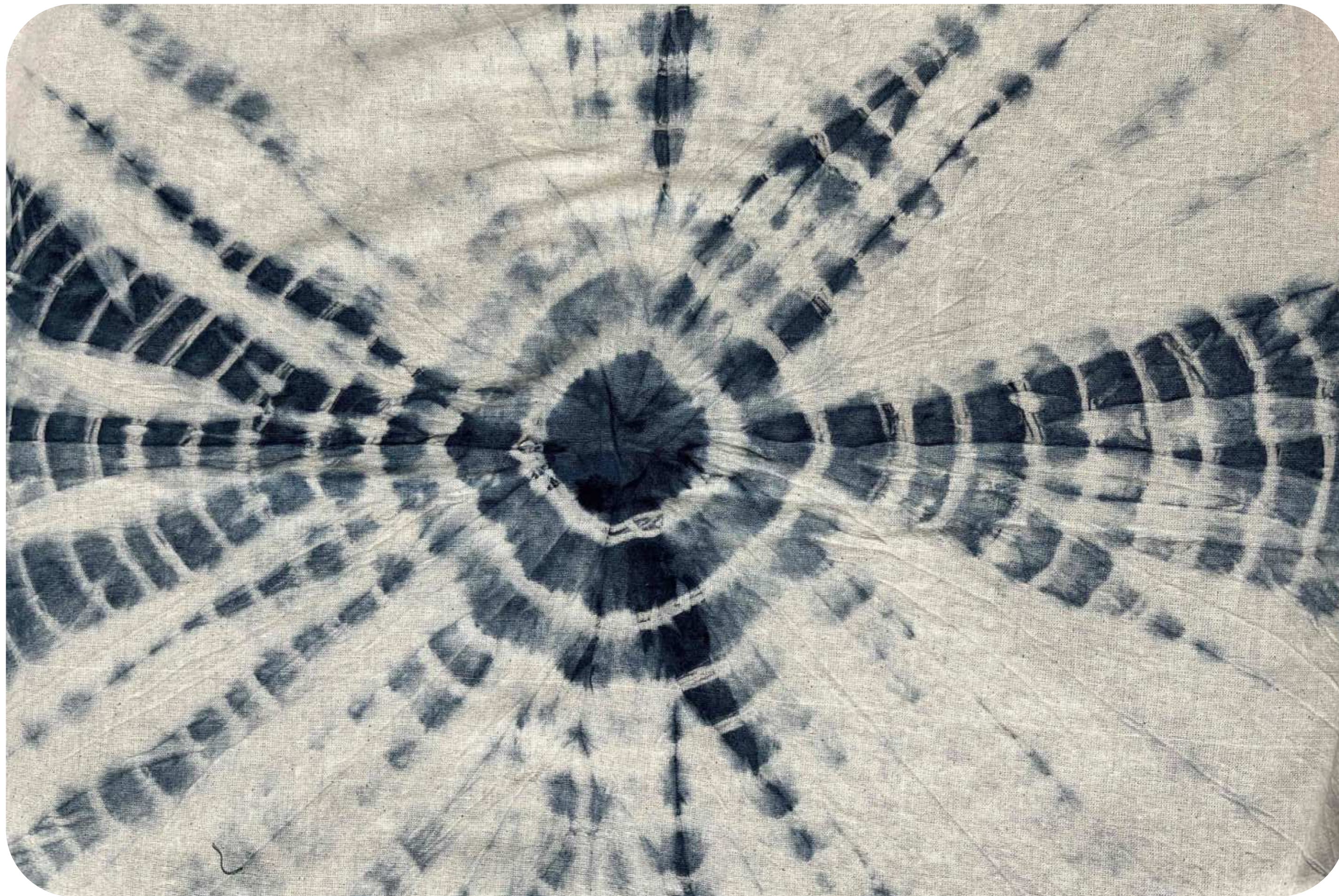
Mintaka

Technique- Tie & Dye

Rs 40/- per mtr Tying
+ dyeing (additional)

s u v ē t a h

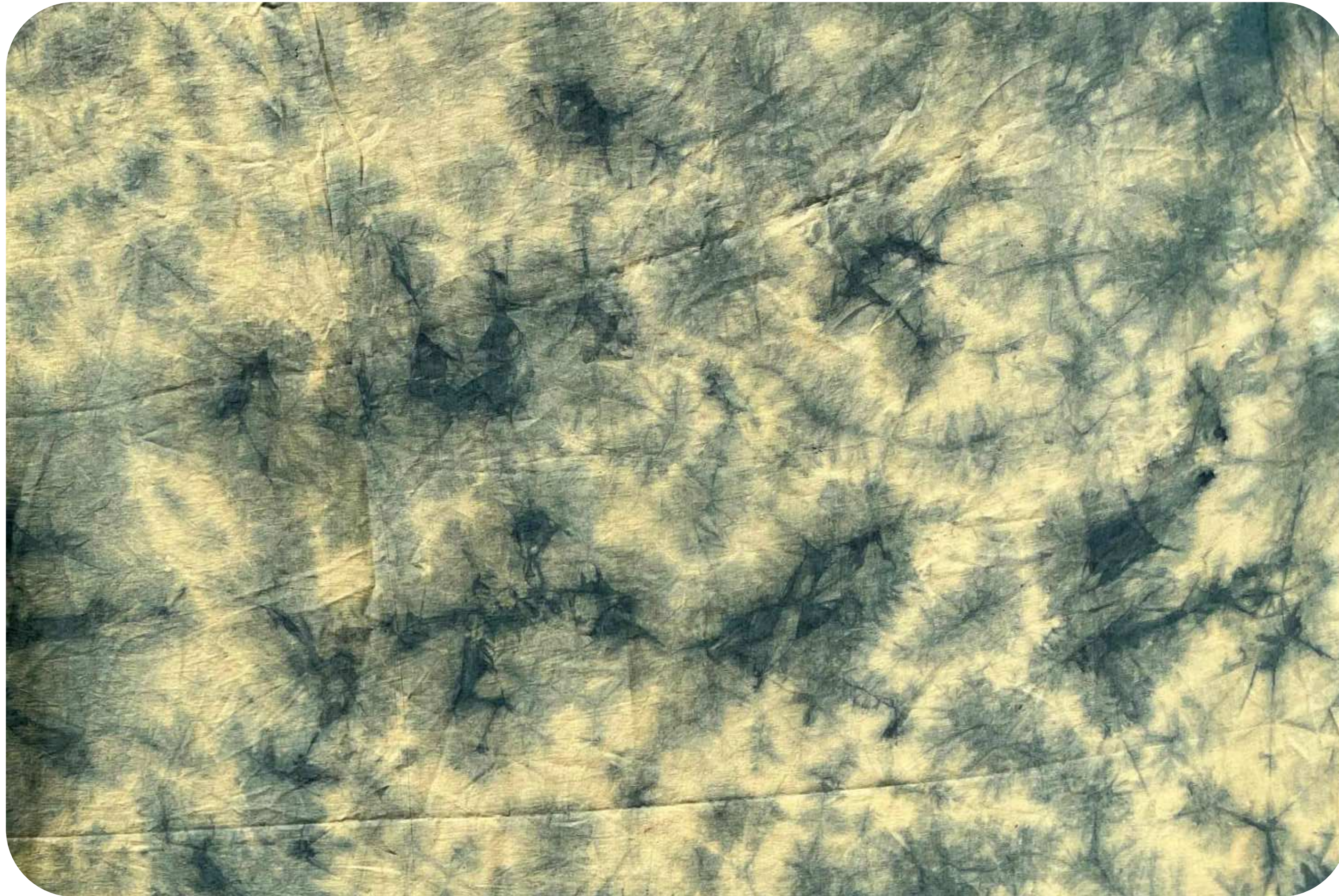
Serpens



Technique- Tie & Dye

Rs 120/- per mtr Tying
+ dyeing (additional)

s u v ē t a h



Harpa

Technique- Tie & Dye

Rs 20/- per mtr Tying
+ dyeing (additional)

s u v ē t a h



Lynx

Technique- Shibori

Rs 50/- per mtr Tying
+ dyeing (additional)

s u v ē t a h

Important Notes :

- Natural Dye, is extracted from environmental substances, which use no chemicals to produce the solvent.
- The beauty of this dye is that it is organic as all the ingredients used are natural and come out of nature.
- When we extract natural substances and use it to create the dyes we will lack precision, as it is not possible to control it.
- As the process is entirely natural and hand-crafted, the outcome of the colors produced will vary within the sample.
- The colour generated by natural dye on protein base fabric and cellulose base fabric will vary, as protein base fabric does not contain dust particles, leading to easy dye absorption and bestows radiant shades than cellulose base fabric.
- There could be a slight variation in the colours of samples exhibited with photos and tangibly, as pictures create illusions and tend to present false representation of colours.
- Due to the natural and hand-crafted method of natural dyeing, each batch of the same dye might give out a slight variation in colour and print at the end.
- Colours and prints which are a source of multiple ingredients will be charged accordingly.

Wash care :

- Use PH neutral washing soap with cold water or temperature not above 30 degrees.
- Do not tumble dry.
- Do not dry in direct sunlight.
- Do not chlorine bleach.
- Wash separately.
- Use iron in low temperature.
- Do not use steam while ironing.
- Keep them away from alkaline & acidic PH substance.

Natural dyeing services :

- Send us an email of all the details of colour, fabric code, technique and its meter at createyourown@suvetah.com
- MOQ for Tie & Dye, Shibori , Clamp Dye is 30 meters.
- Maximum length is 5 meters
- At the time of calculating the fabric, request you to kindly include the shrinkage. Please note- in the process of dyeing, fabric shrinks upto 5 to 6 percent. This percentage varies from fabric to fabric. You can consult us before placing an order.

Create your own samples :

- Send us your own colour board, Pantone, with technique image references.
- Maximum meters for sampling is 2 meters.
- Charges are subjective to fabric ,colors and technique.
- Send us all the details over an email at createyourown@suvetah.com



suvētah