

# LIFTMODE

LIFTMODE  
47 W. Polk St. STE 100-241  
Chicago, IL 60605

liftmode@liftmode.com  
liftmode.com

## CERTIFICATE OF ANALYSIS

### Magnolol

(4-Allyl-2-(5-allyl-2-hydroxy-phenyl)phenol)

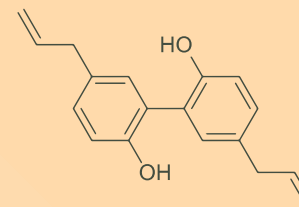
Material Lot #: 20398      Manufacturer Analysis Date: 05/19/2020  
Country of Origin: China      Analysis Date: 08/31/2020  
Retesting Date: 08/31/2023

Analysis	Claim	Result
Magnolol	≥98%	98.7%

Test	Specification	Result
HNMR ID	Conforms	Conforms
HPLC Assay	≥98%	98.71%
ICP-MS		
Arsenic	≤1.5 ppm	<0.001ppm
Lead	≤0.5 ppm	0.175 ppm
Cadmium	≤0.5 ppm	<0.001 ppm
Mercury	≤0.5 ppm	0.007 ppm
Total Aerobic Count	<1000 cfu/g	Conforms
Yeast & Mold	<100 cfu/g	Conforms
Coliform	<10 cfu/g	Conforms
<i>E. coli</i>	Negative	Conforms
Salmonella	Negative	Conforms

Magnolol should be stored at or below room temperature in a tightly sealed durable container.  
Magnolol should be protected from excess heat, direct sunlight, excess humidity, and moisture.  
Magnolol has a retesting period of 3 years from the date of analysis when properly stored.

## Magnolol



### Main Benefits

- Magnolol can be used to promote brain health, circulatory system healthy, anti-inflammation and a healthy mood.
- Studies indicate that Magnolol may also promote healthy reductions in pain caused by inflammation.
- Magnolol holds very effective neuroprotective properties that may improve cognitive function.

### Main Cautions

- Magnolol may interact with some blood thinning medications and cause drowsiness.
- We strongly advise that you do not exceed the recommended serving size or use this supplement shortly before operating heavy equipment.
- Do not use this supplement without first consulting with your doctor if you are taking any medication or have any medical condition.

### Usage Tips

- A 0.15 cc measuring scoop is included. Two rounded scoops contains approximately one serving, or approximately **100mg of Magnolol**. As a dietary supplement, take 1 serving 1-2 times per day. Start at the lower suggested quantity to assess response.
- This supplement is not intended to treat, diagnose, prevent, or cure any diseases. Consult your healthcare provider before use if you have a medical condition or if you are taking any prescription medications.
- The negative effects of Magnolol are dependent on the amount taken. Use of a scale with 10mg/0.01g accuracy or better is highly recommended.
- It is safe to stack Magnolol with other supplements, so long as the amount consumed does not exceed the suggested serving size.
- Use of capsules, or mixing with tea, yogurt, apple sauce, or oatmeal may help make the powder easier to tolerate.
- The benefits of Magnolol are most effective when they are supported by a healthy diet and plenty of exercise.



# Certificate of Analysis

**Client:**  
 Synaptent LLC  
 47 W Polk Street, 100-241  
 Chicago, IL 60654

**Sample Collected By:** Client

Product Name	Magnolol	Product Lot Number	20398
Report Date	08/31/20	Laboratory Number	20080842

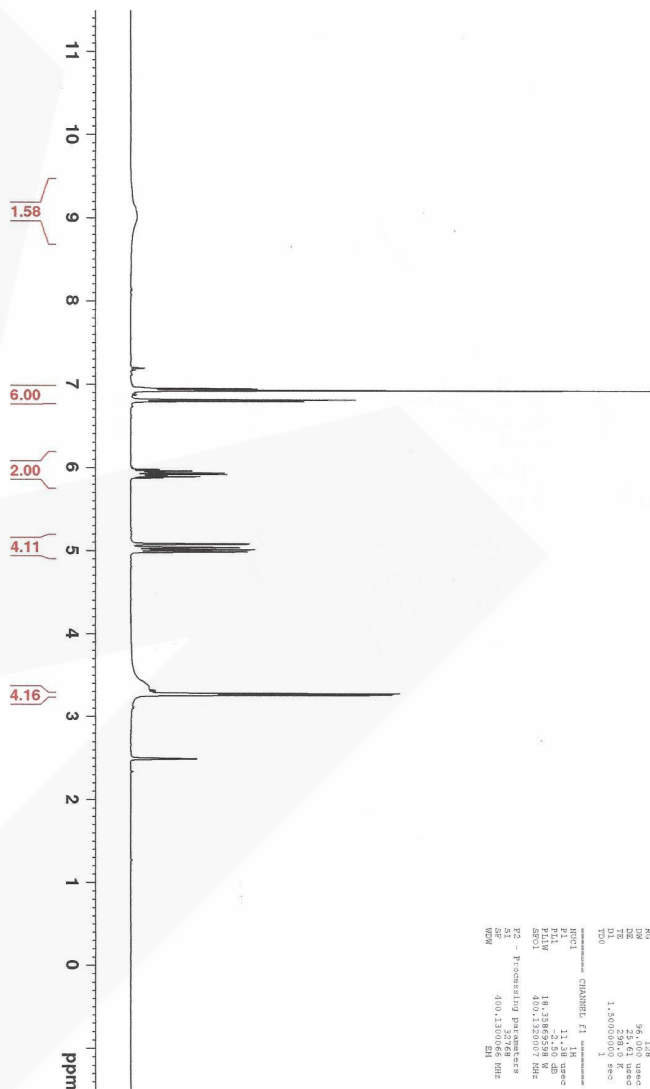
Description	Method	Specification Limit	Result
Identification	H-NMR	Conforms	Conforms
Magnolol	HPLC	NLT 98%	98.6%
Lead	ICP-MS	< 1 ppm	0.175 ppm
Arsenic	ICP-MS	< 1 ppm	<0.001 ppm
Cadmium	ICP-MS	< 1 ppm	<0.001 ppm
Mercury	ICP-MS	< 1 ppm	0.007 ppm
Total Aerobic Count	Biolumix	<1, 000 cfu/g	<1, 000 cfu/g
Yeast & Mold	Biolumix	<100 cfu/g	<100 cfu/g
E. Coli	Biolumix	Absent	Absent
Coliform	Biolumix	<10 cfu/g	<10 cfu/g
Salmonella	Biolumix	Absent	Absent

Collin Thomas *CT*  
 Laboratory Manager

08/31/2020 *8/31/20*  
 Date

The result(s) stated in this report is only for the sample submitted. This report may not be reproduced in whole or in part, nor may any reference be made to the work, the result, or the company in any news release, public announcements or advertising without our prior written consent.

812 Meadow Lark Lane, Goodlettsville, TN 37072  
 Tel: 615-239-8604



**<sup>1</sup>H NMR of Magnolol**  
 In DMSO  
 Lot # 20080842  
 Colmar Analytical  
 400 MHz  
 8-20-20

Current Data Parameters  
 Name: Magnolol.d  
 ExpNO: 2  
 F2 - Acquisition Parameters  
 Date\_Time: 08/31/20 12:15  
 Time: 12:15  
 PROBHD: 5 mm PABBO-BB  
 PULPROG: zgpg30  
 TD: 65536  
 SFO: 400.1464000  
 AQ: 1.00000000  
 SI: 32768  
 SOLVENT: DMSO  
 NS: 1024  
 DS: 4  
 SWH: 4000.210 Hz  
 FIDRES: 0.1189416 Hz  
 AQRES: 3.1447281 sec  
 RG: 327.680  
 MAG: 98.000 usen  
 DELTA: 0.00000000  
 TE: 298.2 K  
 DQ: 1.80000000 sec  
 DE: 1.00000000  
 ===== CHANNEL f1 =====  
 NUC1: <sup>1</sup>H  
 P1: 12.00  
 PL1: 0.00  
 SFO1: 400.1464000 MHz  
 ZGPG: 30  
 ===== CHANNEL f2 =====  
 NUC2: <sup>13</sup>C  
 P2: 18.00  
 PL2: 0.00  
 SFO2: 101.6261250 MHz  
 ZGPG2: 30  
 ===== CHANNEL f3 =====  
 NUC3: <sup>15</sup>N  
 P3: 13.00  
 PL3: 0.00  
 SFO3: 101.3050875 MHz  
 ZGPG3: 30  
 ===== CHANNEL f4 =====  
 NUC4: <sup>31</sup>P  
 P4: 13.00  
 PL4: 0.00  
 SFO4: 125.7613500 MHz  
 ZGPG4: 30