



LIFTMODE
47 W. Polk St. STE 100-241
www.liftmode.com

liftmode@liftmode.com

CERTIFICATE OF ANALYSIS

Oleamide

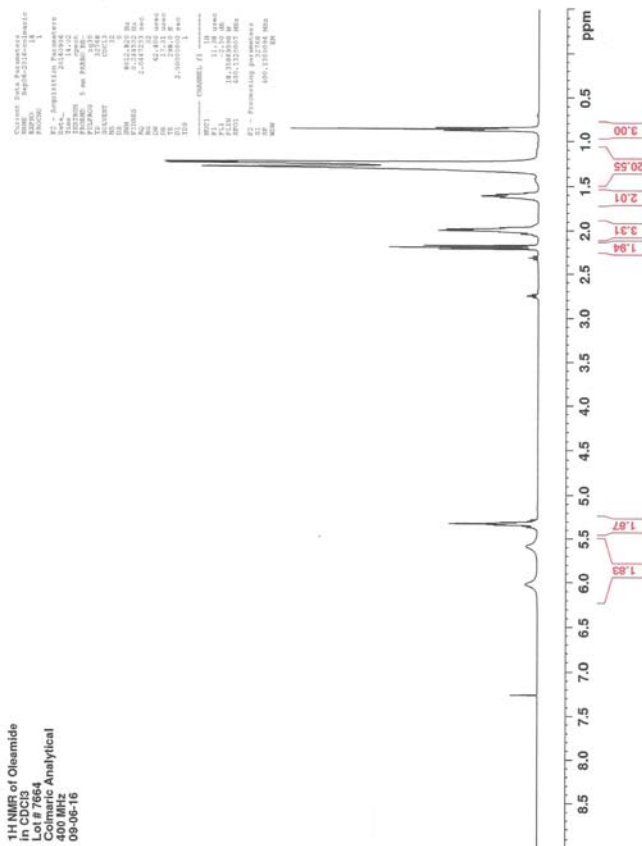
(Oleic acid amide)

Material Lot #: 20160630 Manufacture Date: 06/30/2016
Country of Origin: China Expiration Date: 06/29/2018

Analysis	Claim	Result
Total Fatty Acid Amide	≥98.0%	98.8%
Oleamide	≥60.0%	66.3%

Test	Specification	Result
Appearance	Small round pearl or powder	Complies
Melting Point	17-76° C	74.2° C
Amide content	≥95%	98.8%
Acid Value	≤0.8 mg KOH/g	0.49 KOH/g
Iodine Value	80-95 g _l /100g	85.1 g _l /100g
Color (hazen)	≤400	100
Moisture (wt%)	≤0.1	0.012

Oleamide should be **refrigerated** in a tightly sealed durable container.
Oleamide should be protected from excess heat, direct sunlight, excess humidity and moisture.
Oleamide has a stable shelf life of 2 years from the date of manufacture when properly stored.



LIFTMODE
47 W. Polk St. STE 100-241
www.liftmode.com

liftmode@liftmode.com

CERTIFICATE OF ANALYSIS

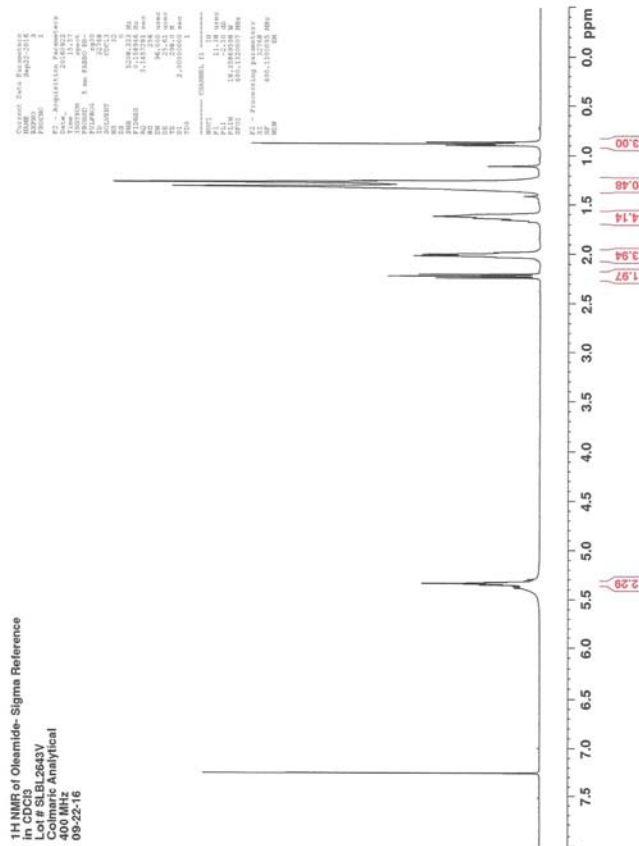
Oleamide

Product Name	Oleamide	Client Lot Number	20160603
Report Date	09/28/16	Laboratory #	7664

Test	Method	Result
Oleamide	HPLC	66.3%
Identification	Proton NMR	Conforms
Heavy Metals	ICP-MS USP <730>	ppm
Arsenic	ICP-MS USP <730>	0.021
Cadmium	ICP-MS USP <730>	<0.001
Lead	ICP-MS USP <730>	0.009
Mercury	ICP-MS USP <730>	0.002
Total Plate Count	AOAC 966.23	<10 CFU/g
Yeast & Mold	FDA BAM	<10/<10 CFU/g
E.coli	AOAC 991.14	<10 CFU/g
Coliform	AOAC 991.14	<10 CFU/g
Salmonella	AOAC 998.09	Negative/10g

Collin Thomas
Laboratory Manager

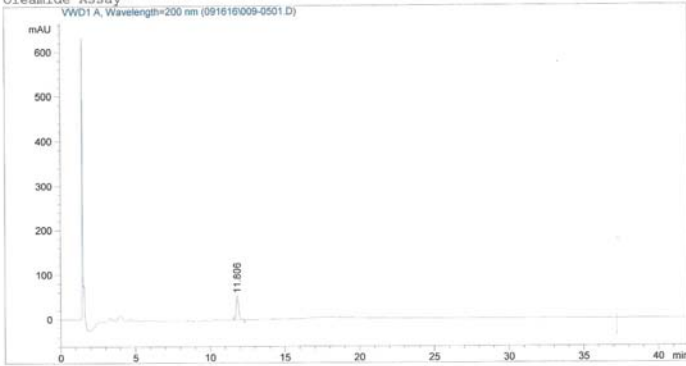
09/28/2016
Date



```

Injection Date : 9/16/2016 2:11:08 PM      Seq. Line : 5
Sample Name    : Oleamide StdMeOH          Vial : 9
Acq. Operator  : Yoho                      Inj : 1
                                           Inj Volume : 10 µl
Different Inj Volume from Sequence !      Actual Inj Volume : 5 µl
Method        : C:\HPCHEM\1\METHODS\OLEAMIDE.M
Last changed  : 9/16/2016 10:39:50 AM by Yoho
Oleamide Assay

```



External Standard Report

```

Sorted By      : Signal
Multiplier     : 1.0000
Dilution       : 1.0000

```

Signal 1: VWD1 A, Wavelength=200 nm

Area Percent Report

```

Sorted By      : Signal
Multiplier     : 1.0000
Dilution       : 1.0000

```

Signal 1: VWD1 A, Wavelength=200 nm

Peak #	RetTime [min]	Type	Width [min]	Area [mAU*s]	Height [mAU]	Area %
1	11.806	BP	0.1747	608.67615	53.53282	100.0000

Totals : 608.67615 53.53282

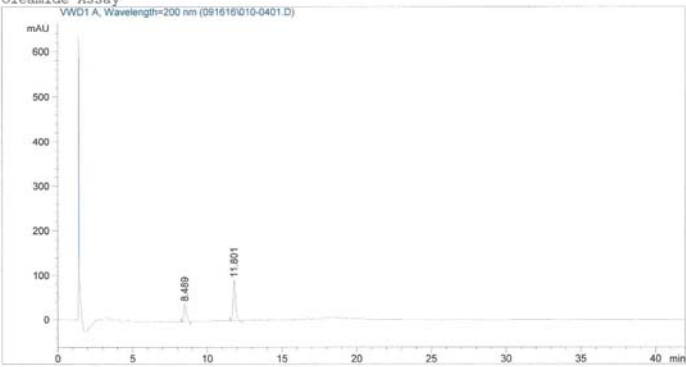
Results obtained with enhanced integrator!

*** End of Report ***

```

Injection Date : 9/16/2016 1:28:35 PM      Seq. Line : 4
Sample Name    : 20160603-MeOH            Vial : 10
Acq. Operator  : Yoho                      Inj : 1
                                           Inj Volume : 10 µl
Different Inj Volume from Sequence !      Actual Inj Volume : 5 µl
Method        : C:\HPCHEM\1\METHODS\OLEAMIDE.M
Last changed  : 9/16/2016 10:39:50 AM by Yoho
Oleamide Assay

```



External Standard Report

```

Sorted By      : Signal
Multiplier     : 1.0000
Dilution       : 1.0000

```

Signal 1: VWD1 A, Wavelength=200 nm

Area Percent Report

```

Sorted By      : Signal
Multiplier     : 1.0000
Dilution       : 1.0000

```

Signal 1: VWD1 A, Wavelength=200 nm

Peak #	RetTime [min]	Type	Width [min]	Area [mAU*s]	Height [mAU]	Area %
1	8.489	PB	0.1834	491.63629	40.00637	32.3607
2	11.801	PB	0.1741	1027.60339	90.73124	67.6393

Totals : 1519.23969 130.73761

Results obtained with enhanced integrator!

*** End of Report ***