





# AX6000 Wi-Fi 6 Mesh Range Extender


Boost your Wi-Fi




RE900XD

 Wi-Fi  
Dead Zone Killer

 Covers  
up to 2,200 sq.ft.<sup>†</sup>

 2.5 Gbps  
Multi-Gig Port<sup>△</sup>

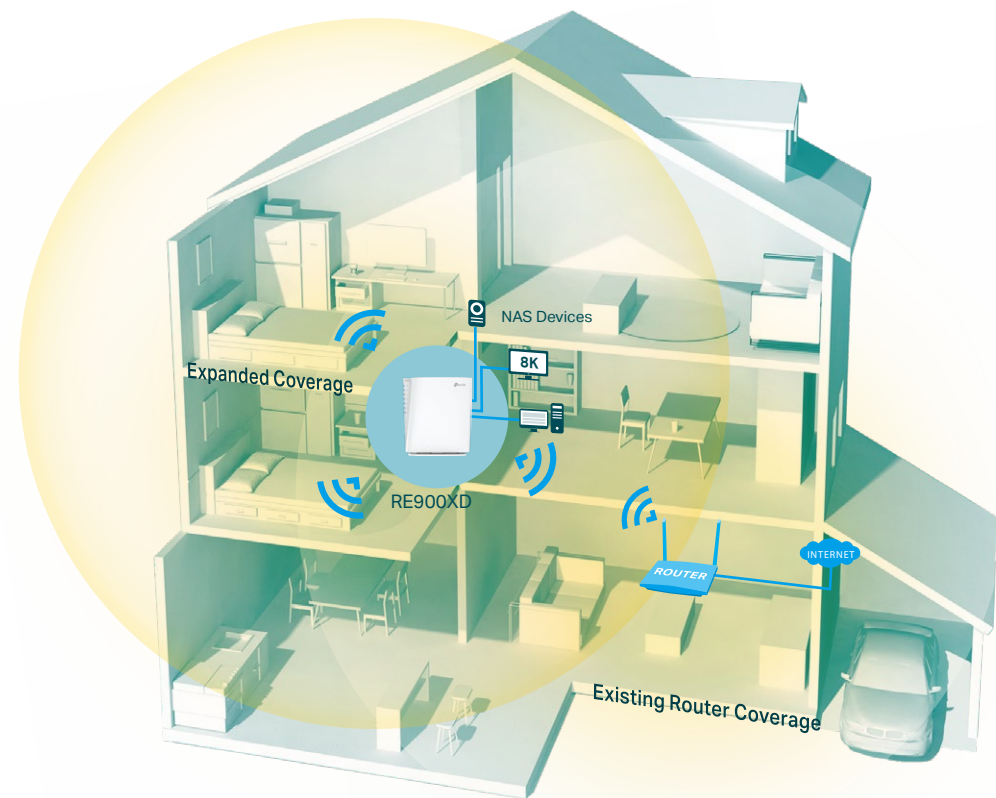
 Access Point  
Mode

 Easy  
One Button Setup

# Highlights

## Eliminate Wi-Fi Dead Zones with Powerful Wi-Fi 6

Connect with a TP-Link's OneMesh™ router to create a mesh network for seamless whole-home coverage, or any Wi-Fi router to boost your Wi-Fi range.†



● Wi-Fi Coverage  
— Ethernet Cable



### Faster Wi-Fi 6 Speed

Experience tremendous Wi-Fi speeds up to 6 Gbps.†



### Wider 160 MHz Channel

Doubles your Wi-Fi speed with the 160 MHz channel for super-smooth 8K streams. \*\*\*



### 4×4 MU-MIMO

Connect more devices simultaneously.\*\*\*



### WPA3 Security

Offers improved comprehensive Wi-Fi protection to defend your devices and private information.\*\*



### Multiple Installation Options

Flexibly install your RE900XD on desktop or wall mount.



### Adaptive Path Selection

Keep your network running at top-speed by automatically choosing the fastest connection path to the router.



### Easy Setup Within Minutes

Easy setup and management via WPS button/Tether app/Web UI.

# Highlights



RE900XD is more than a traditional range extender. It creates a Mesh network by connecting to a TP-Link OneMesh™ router for seamless whole-home coverage.



## Wi-Fi Dead-Zone Killer

Eliminate weak signal areas with Wi-Fi coverage for the whole house.



## Uninterrupted Streaming<sup>s</sup>

Enjoy uninterrupted streaming, surfing, and more—even when moving around your home.



## One Wi-Fi Name

Stay connected to the same network name in every room.



## Easy Setup with the Tether App

Push the WPS button to set up a Mesh network you can manage from the Tether app or web UI.



Check more info about OneMesh technology and full list of OneMesh extenders/routers at: <https://www.tp-link.com/onemesh>

\*More compatible devices coming soon

## AX6000 Wi-Fi 6 Mesh Range Extender



### Secure One-Touch Connection (WPS)

Instantly connect the extender to a router without further configuration.

### Smart Signal Indicator

Check the indicators to find the best spot to extend Wi-Fi.

- Strong Signal
- Weak Signal

### 1× 2.5 Gbps<sup>Δ</sup> + 2× Gigabit LAN Ethernet Ports

Plug in to give wired devices high-bandwidth network access.



PC



Game Console

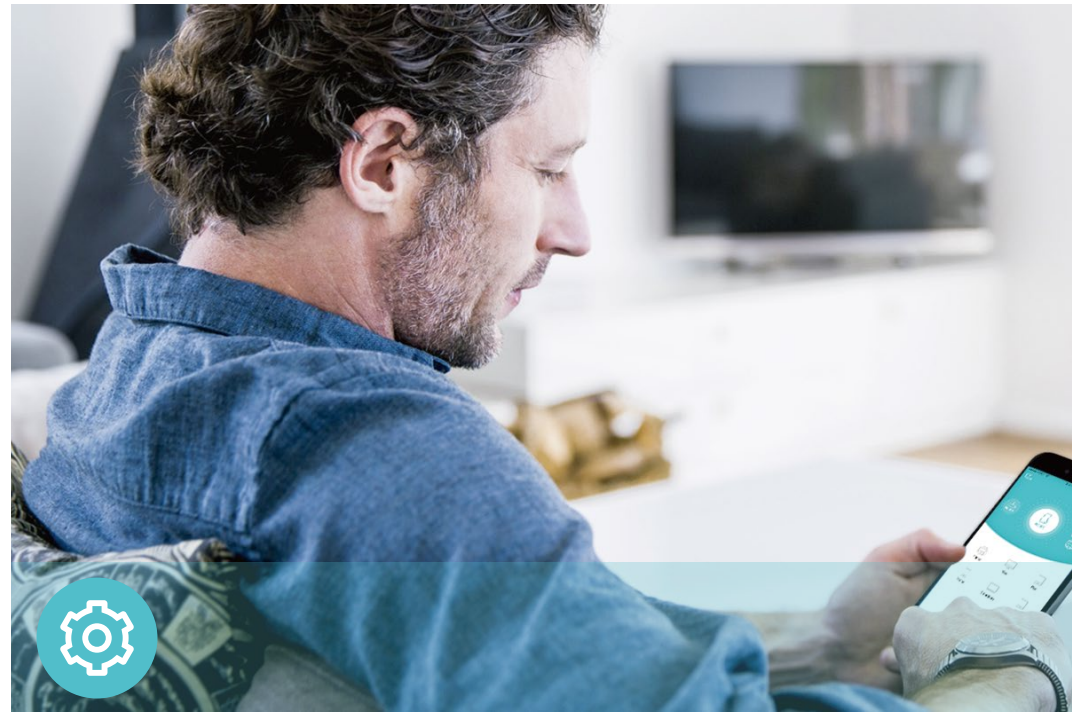


Smart TV



NAS Devices

# Features



## Ease of Use

- Intuitive Web UI – Ensures quick and simple installation without hassle
- Fast Setup – One-touch connection with the WPS button
- Hassle-free Management with Tether App – Network management is made easy with the TP-Link Tether App, available on any Android or iOS device
- Online Upgrade – Keeps you informed of the latest firmware and allows online updating on the web UI



## Speed

- Ultimate Wireless Speed – Combined wireless speeds of up to 1148 Mbps at 2.4 GHz and 4804 Mbps at 5 GHz†
- Support Wi-Fi 6 – Turbocharge your devices with wireless speeds of up to 6 Gbps
- Adaptive Path Selection – Keep your network running at top-speed by automatically choosing the fastest connection path to the router



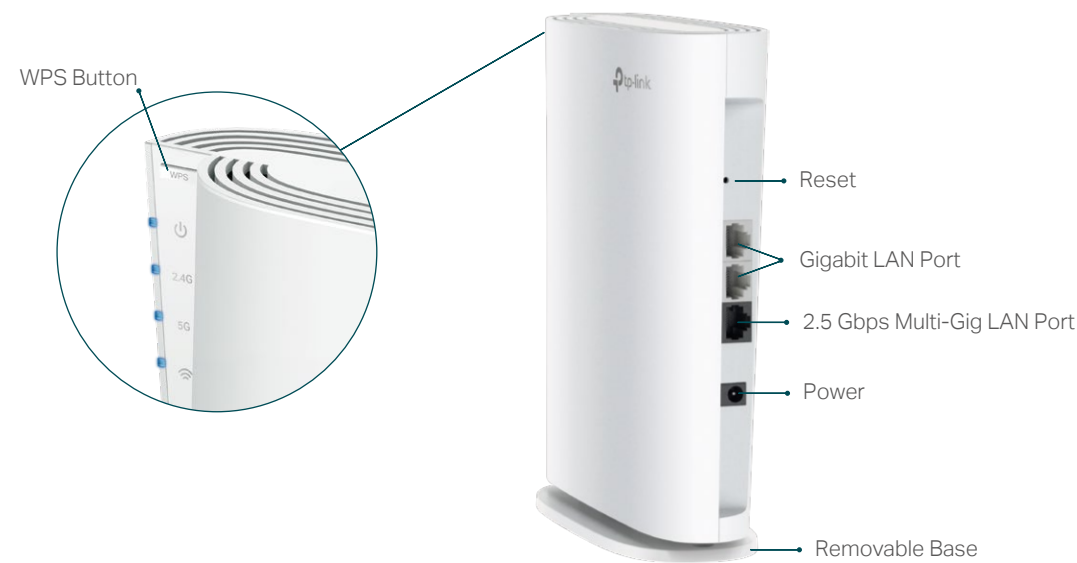
## Reliability

- Simultaneous Dual Band – Separate Wi-Fi bands enable more devices to connect to your network without a drop in performance
- Reliable Connection – External antennas for optimal Wi-Fi coverage and reliable wireless connections
- Ultra-Low Latency – Take advantage of ultra-low latency to enjoy smoother online experience

# Specifications

## Hardware

- Button: WPS Button, Reset Button
- Port: 1× 2.5 Gbps Multi-Gig Port + 2× Gigabit Ports
- Power Consumption: 16.78W (Max)
- Power Adapter: Input: 100-240V~50/60Hz Output:12VDC/1.5A
- Dimensions (L×W×H): 7,8×7.4×2.3 in. (200\*189\*59 mm)



## Wireless

- Wireless Standards: IEEE 802.11a/n/ac/ax 5 GHz, IEEE 802.11b/g/n/ax 2.4 GHz
- Frequency: 2.4 GHz and 5 GHz
- Signal Rate: 1148 Mbps at 2.4 GHz, 4804 Mbps at 5 GHz
- Transmit Power: CE: 2.4G < 20dBm, 5G < 30dBm
- Reception Sensitivity:  
5GHz:  
11ax HE20 MCS0: -95dBm, 11ax HE20 MCS11: -64dBm  
11ax HE40 MCS0: -92dBm, 11ax HE40 MCS11: -61dBm  
11ax HE80 MCS0: -89dBm, 11ax HE80 MCS11: -58dBm  
11ax HE160 MCS0: -85dBm, 11ax HE160 MCS11: -55dBm  
2.4GHz:  
11ax HE20 MCS0: -96dBm, 11ax HE20 MCS11: -67dBm  
11ax HE40 MCS0: -93dBm, 11ax HE40 MCS11: -64dBm
- Wireless Function: LED Control, Access Control, Power Schedule, Wi-Fi Coverage
- Wireless Security: WPA/WPA-PSK2 encryptions, WPA2/WPA3

## Others

- Certification  
CE, RoHS
- System Requirements  
Microsoft Windows 98SE, NT, 2000, XP, Vista™ or Windows 7, 8, 8.1, 10, MAC OS, NetWare, UNIX or Linux  
Internet Explorer 11, Firefox 12.0, Chrome 20.0, Safari 4.0, or other Java-enabled browser
- Package Contents  
Range Extender RE900XD  
Power Adapter  
Quick Installation Guide  
RJ45 Cable



For more information, please visit

<https://www.tp-link.com/en/home-networking/range-extender/re900xd/>

or scan the QR code left

<sup>†</sup>Maximum wireless signal rates are the physical rates derived from IEEE Standard 802.11 specifications. Actual wireless data throughput and wireless coverage per ft<sup>2</sup> are not guaranteed and will vary as a result of network conditions, client limitations, and environmental factors, including building materials, obstacles, volume and density of traffic, and client location.

<sup>‡</sup>The product may not be compatible with routers or gateways with firmware that has been altered, is based on open source programs, or is non-standard or outdated.

<sup>§</sup>Uninterrupted Streaming is designed for devices that support the 802.11k/v standard.

<sup>^</sup>2.5 Gbps internet speeds require compatible service plans and equipment.

\*Saving clients' battery power requires clients to also support the 802.11ax Wi-Fi standard. Actual power reduction may vary as a result of network conditions, client limitations, and environmental factors.

\*\*Use of WPA3 requires clients to also support WPA3.

\*\*\*Use of Wi-Fi 6 and other features including OFDMA, MU-MIMO, 1024-QAM, HE160, and BSS Color requires clients to also support the corresponding features. The 160 MHz bandwidth may be unavailable in the 5 GHz band in some regions/countries due to regulatory restrictions.