

# Argus PT Ultra

Argus PT Ultra, with 4K Ultra HD resolution, the camera offers you sharper images. See more details of your properties whether you're watching the live view or the playback. Besides having an ultra-high resolution, the camera can also pan 355° and tilt 140° to help you see more corners easily.

## 1. Specs



1	Speaker
2	Lens
3	Spotlight
4	Daylight Sensor
5	IR LEDs
6	Status LED
7	Built-in PIR Sensor
8	Built-in Mic



1	Antenna
2	USB-C Port
3	Power Switch
4	Micro SD Card Slot
5	Reset Hole

## Status Light

Status Light	Camera Status
Red light	Wi-Fi connection failed
Blue light	Wi-Fi connection succeeded
Blinking	Standby status
On	Working status

## 2. Setup and Install

### Set up the Camera

#### What's in the Box

**Note:** The package content may vary and update with different version and platforms, please take the below information only for a reference. And the actual package content are subject to the latest information on the product selling page.

Argus PT 4K



Argus PT 4K\*1



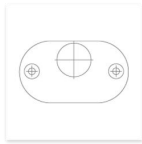
USB-c Cable\*1



Quick Start Guide\*1



Bracket\*1



Mounting Template\*1



Surveillance Sticker\*1



Pack of Screws\*1



Reset Needle\*1



Strap\*1

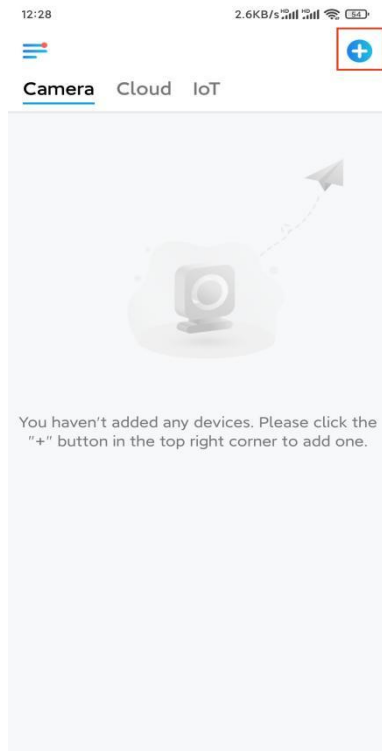
## Set up the Camera on the App

Please follow the steps below to do initial setup for the battery-powered cameras via Reolink App.

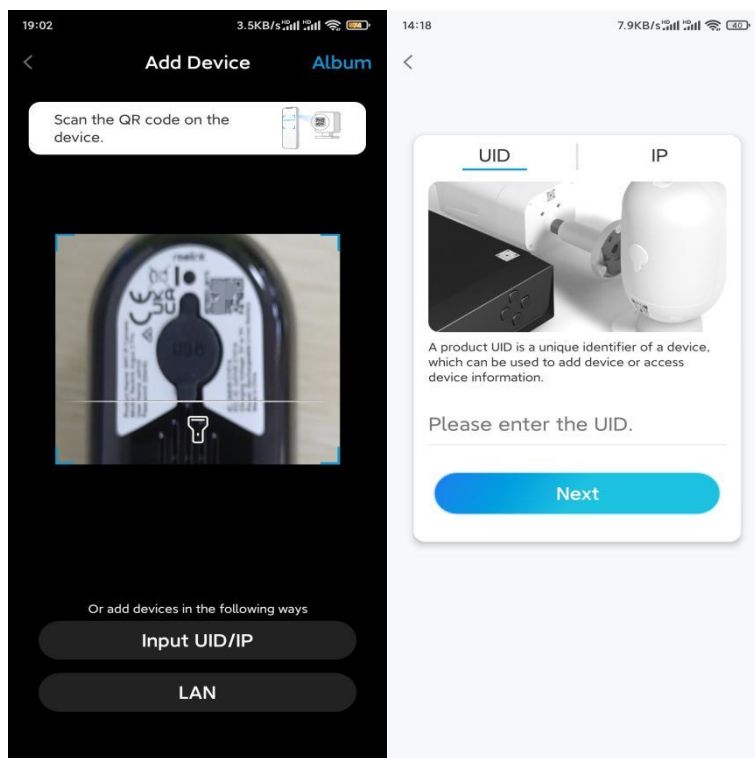
**Step 1.** Power on the camera. Remember to turn on the power switch on the camera before initial setup except for Argus 2 and Argus Pro. After a startup sound, you will hear a **repeated Ding sound** or a **voice prompt**.

**Note:** The voice prompt you will hear may be "Welcome to Reolink, please install Reolink app and scan the QR code on the camera" in multilingual versions, or "please run Reolink app, add the camera and set it up".

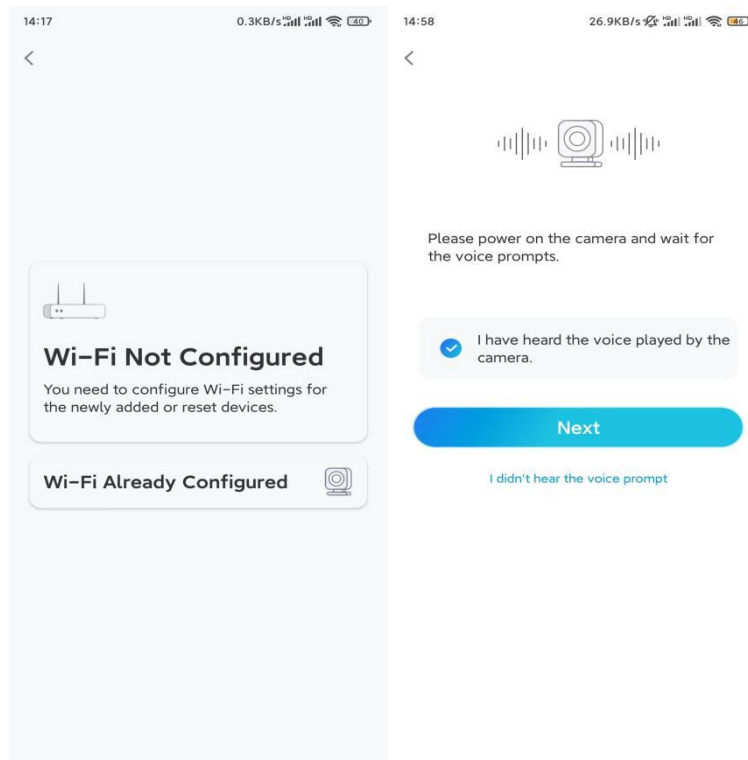
**Step 2.** Tap the icon  in the top right corner to start the initial setup.



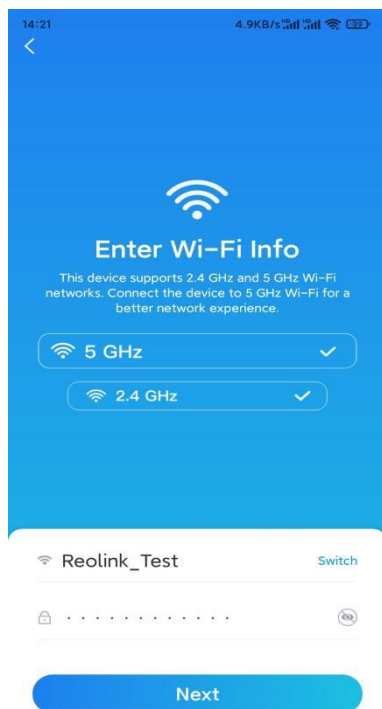
**Step 3.** Scan the QR code on the back of the camera. You may tap **Light** to enable a flashlight when setting up the camera in a dark environment. If the phone doesn't respond, please tap **Input UID/IP** and then manually type in the UID (16-digit characters under the QR code of the camera). Then click **Next**.



**Step 4.** Select **Wi-Fi Not Configured**. If you hear a voice prompt played by the camera, please tick correspondingly and then tap **Next**.

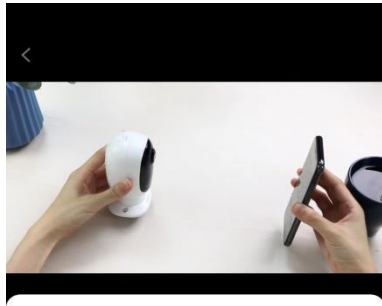


**Step 5.** Enter the WiFi password of the selected WiFi network (you may tap the right eye icon to see and double-check the password) and tap **Next**.

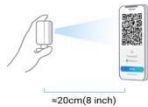


**Note:** Argus 2E only supports the WiFi frequency of 2.4GHz.

**Step 6.** Tap **Scan Now**. Place the QR code on your phone in front of the camera's lens at a distance of about 20 cm (8 inches) and let the camera scan the QR code. Tick correspondingly and tap **Next**.



14:22 10.2KB/s



To connect your camera to Wi-Fi network, face it to your phone and let the camera scan the QR code on the screen.

Scan Now



Please face the camera towards QR code and keep scan distance around 20 cm (8 inches).

I have heard a beep sound from the camera.

Demo

Next

Scan failed?

**Step 7.** Wait around 60 seconds for the camera to connect to the router. After hearing "connection to the router succeeded", tick correspondingly and tap **Next**.

14:22

6.2KB/s



Camera is connecting to the router...



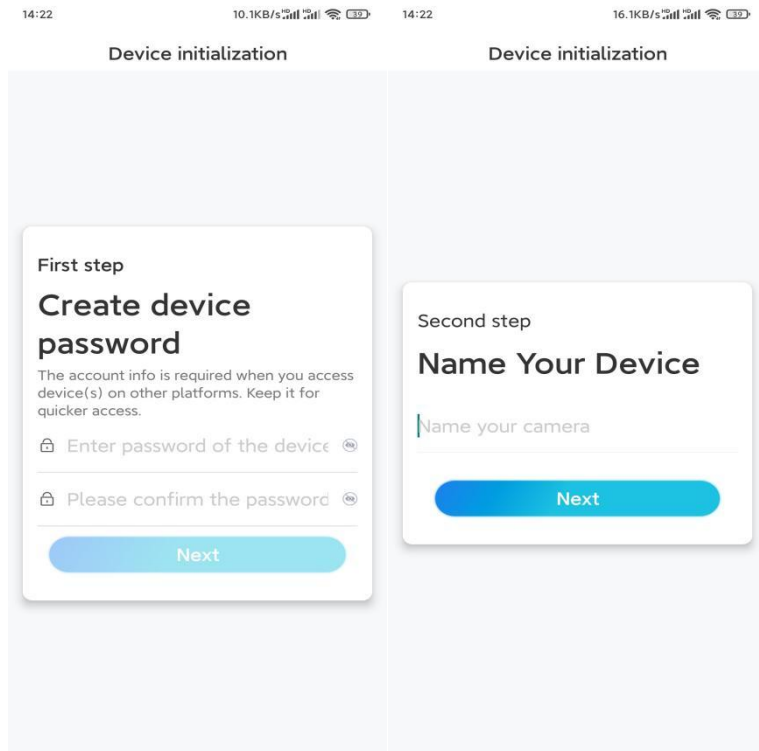
Connection to the router succeeded

I have heard the voice prompt

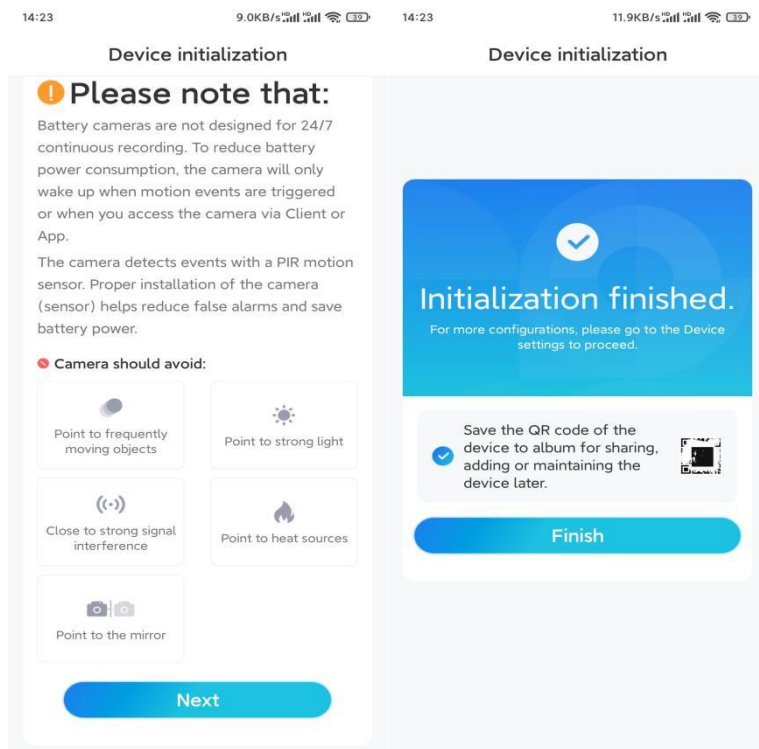
Next

Connection to the router failed

**Step 8.** Create a login password and then name your camera.



**Step 9.** Read the note below and then tap **Finish** to complete the initialization of your camera.



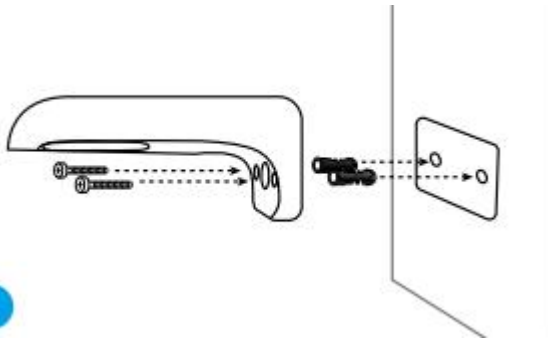
Once the initial setup is completed, you may choose a good position to mount your camera.

## Install the Camera

We offer you guides on three different scenes in which the camera could be installed. Check out them respectively.

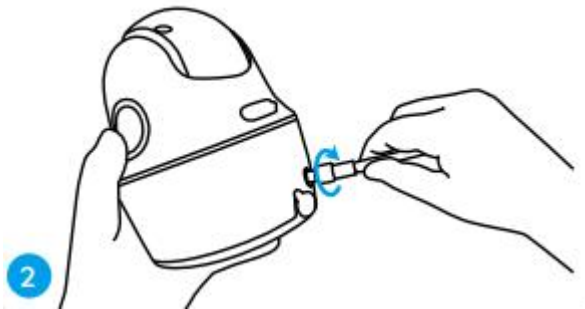
### Mount the Camera to the Wall

**Step 1.** Drill holes in accordance with the mounting hole template and screw the security mount to the wall.



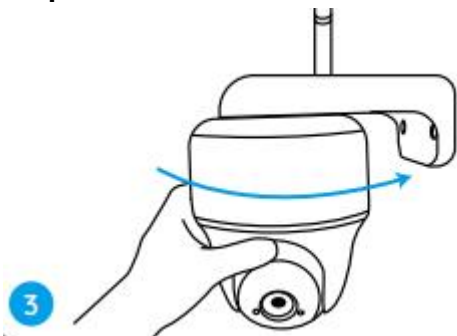
**Note:** Use the drywall anchors included in the package if needed.

**Step 2.** Screw the antenna to the camera.



**Note:** In order to get a better network connection, it is recommended to install the antenna upward or horizontally.

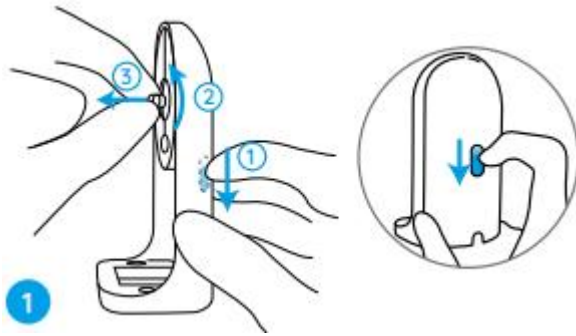
**Step 3.** Screw the camera to the security mount and adjust to the proper direction.



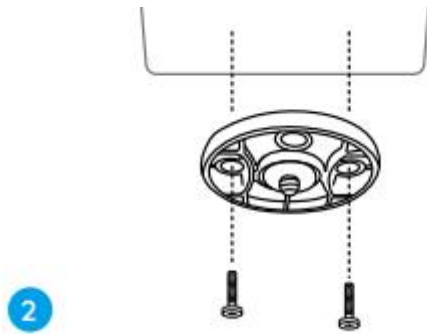
### Mount the Camera to the Ceiling

**Step 1.** Pull the button on the security mount and unscrew the bracket to separate the two parts.

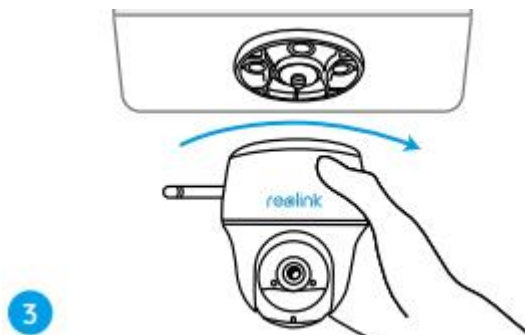




**Step 2.** Install the bracket base on the ceiling with screws.

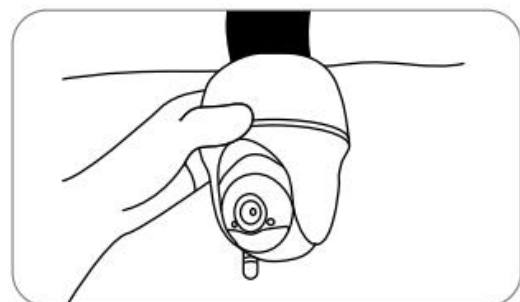


**Step 3.** Align the camera with the bracket and turn the camera unit clockwise to lock it in position.



### Install the Camera with Loop Strap

You are allowed to strap the camera to a tree with both the security mount and ceiling bracket. Thread the provided strap through the slots of the plate and fasten it to a tree. Next, attach the camera to the plate as you have done in the previous two methods.



Done! You've installed the Argus PT successfully.

**Note:** The best way to install the camera is to install it upside down in order to prevent water from flowing into the microphone hole.