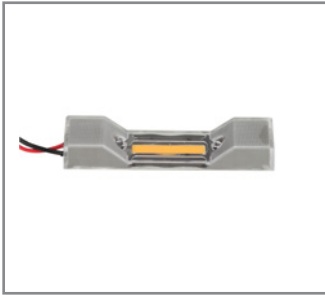


# SPJ-FB-LS-4-350

## SPECIFICATION FEATURES



Model: **SPJ-FB-LS-4-350**

**Electrical:** Available in 12V  
**Labels:** UL Wet Listed

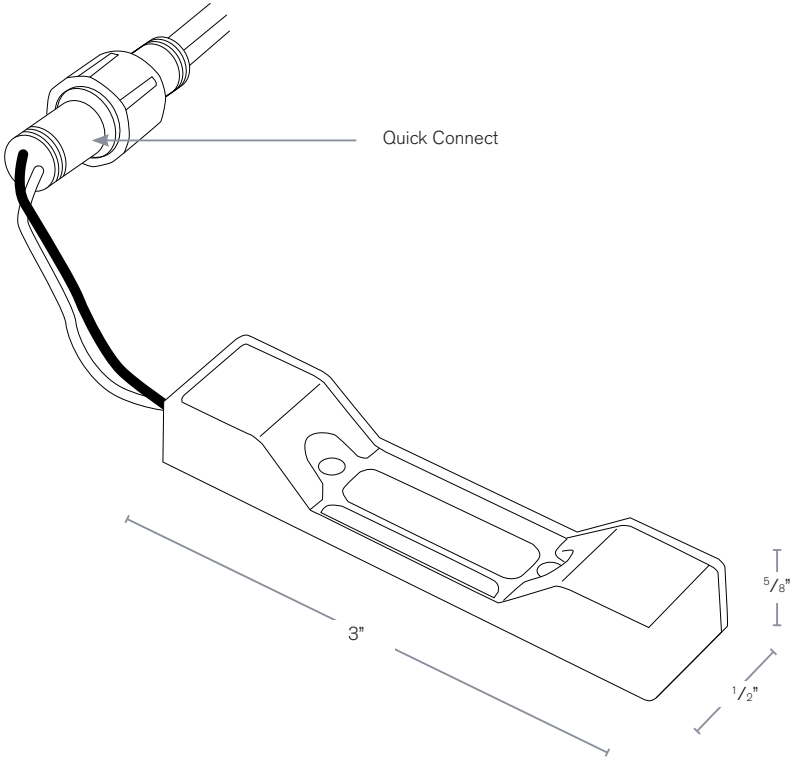
**Quick Connect • 90 CRI • IP67 Rated**

### Forever Bright Engine

#### DESCRIPTION

**Model#:** SPJ-FB-LS-4-350  
**Electrical:** 12V  
**Color Temp:** 2700K  
**Mounting:** Quick Connect

MODEL #	WATTAGE	LUMENS
SPJ-FB-LS-4-350	4	350



SPJ Approval	Customer Approval

#### ORDERING INFORMATION

Model#	Wattage	Lumens	Electrical	Color Temp.
SPJ-FB-LS-4-350	4W	350	12V	<input type="checkbox"/> 2700K <input type="checkbox"/> 4000K <input type="checkbox"/> 5000K