



*Proper installation is essential to experience and appreciate the benefits of this system. Please take a moment to review these installation instructions before you begin to install these components on your vehicle. The removal and installation of suspension products should only be performed by a fully qualified, ASE Certified, professional.*

*It is equally important to be aware of all necessary safety measures while installing your new Suspension System. This includes proper lifting and immobilizing of the vehicle and isolation of any stored energy to prevent personal injury or property damage.*



**Scan here for video instructions**

## GENERAL INFORMATION

- Not to be stored below 5°F (-15°C) or above 122°F (50°C).
- Avoid damage to air lines and cables.
- Removal and installation is only to be performed by fully qualified personnel.
- Use car manufacturer's diagnostic software.

**CAUTION:** *Damage to the vehicle and air suspension system can be incurred if work is carried out in a manner other than specified in the instructions or in a different sequence.*



*To avoid the possibility of short circuits while working with electric components consult your owner's manual on how to disconnect your battery.*



*Consult your vehicle owner's manual, service manual, or car dealer for the correct jacking points on your vehicle and for additional care, safety and maintenance instructions. Under no circumstances should any work be completed underneath the vehicle if it is not adequately supported, as serious injuries and death can occur.*

## **DISCLAIMER:**

THE PRODUCT SHOWN IN THE INSTALLATION STEPS BELOW MAY LOOK DIFFERENT THAN THE PART YOU ARE INSTALLING. THE INSTALLATION STEPS ARE THE SAME AND ALL NOTICES AND WARNINGS SHOULD BE ADHERED TO IN THE SAME MANNER.

## COIL STRUT REMOVAL

1. Raise the vehicle and remove the front wheels.  
(Figures 1, 2)



FIGURE 1



FIGURE 2

2. Unroute and disconnect the electrical connection. (FIGURES 3, 4)



FIGURE 3



FIGURE 4

3. Remove the three (3) top mount nuts. (FIGURES 4, 5)



FIGURE 5



FIGURE 6



4. Remove the two (2) bottom mount bolts. (FIGURES 7, 8)

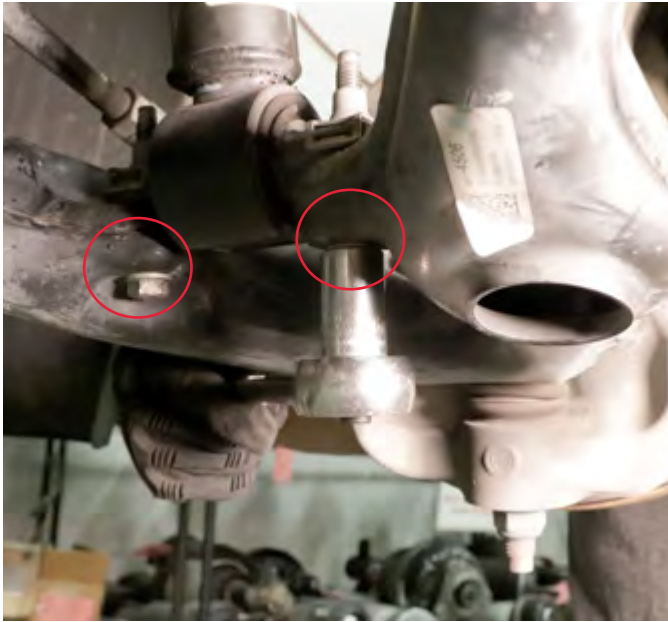


FIGURE 7



FIGURE 8

5. Remove the shock assembly from the vehicle. (FIGURE 9)



FIGURE 9

6. Removal complete.

## COIL STRUT INSTALLATION



*Tighten all nuts and bolts to manufacturer's specifications during the installation process.*

1. Install the Stutmasters Magneride Shock onto the vehicle
2. Reinstall the two bottom mount bolts. Tighten to the manufacturer's specifications.
3. Reinstall the three (3) top mount nuts. Tighten to the manufacturer's specifications.
4. Reroute and reconnect the electrical connector to the new strut
5. Reinstall the front wheels
6. Installation Complete!

*To fully ensure that the suspension fault codes do not return immediately after install, the **Suspension Position Sensor Trim Height Calibration must be performed.***

1. Place the vehicle on a flat level surface and remove any excess weight from the vehicle.
2. Connect Scan Tool
3. From scan tool menu, select Suspension Control Module.
4. Select Configuration/Reset Functions
5. Select Suspension Position Sensor Trim Height and follow the on screen instructions

Strutmasters is a company founded in 1999 that specializes in Air to Non-Air Suspension Conversion kits and suspension components, Strutmasters has become an industry leader in the world of suspension. What began as a personal project to repair a family's only vehicle, Strutmasters has grown into a nationwide provider of suspension solutions and has truly earned the title "The Suspension Experts®".



**STRUTMASTERS**  
THE SUSPENSION EXPERTS®

**Sales****Email:** [salesteam@strutmasters.com](mailto:salesteam@strutmasters.com)**Toll Free:** 866-610-9848**Product Support****Email:** [tech@strutmasters.com](mailto:tech@strutmasters.com)**Toll Free:** 866-998-8737**Mailing Address**

Suspension Experts, LLC Strutmasters

118 Commerce Drive

Roxboro, NC 27573