



Proper installation is essential to experience and appreciate the benefits of this system. Please take a moment to review these installation instructions before you begin to install these components on your vehicle. The removal and installation of suspension products should only be performed by a fully qualified, ASE Certified, professional.

It is equally important to be aware of all necessary safety measures while installing your new Suspension System. This includes proper lifting and immobilizing of the vehicle and isolation of any stored energy to prevent personal injury or property damage.



WARNING: The air/hydraulic suspension system is under pressure (up to 10 bar, or 150 lbf/in). Verify pressure has been relieved and disconnect power to the suspension system prior to disassembly. Do not allow dirt or grease to enter the system. Always wear standard hand, ear, and eye protection when servicing the suspension system.

Spring Removal

1. Turn "OFF" air suspension switch.
Raise the vehicle and remove the tire and wheel assembly.



2. Raise and support the vehicle.

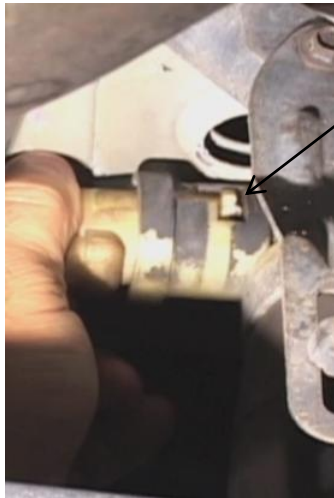


3. Remove the Airline from the Solenoid.



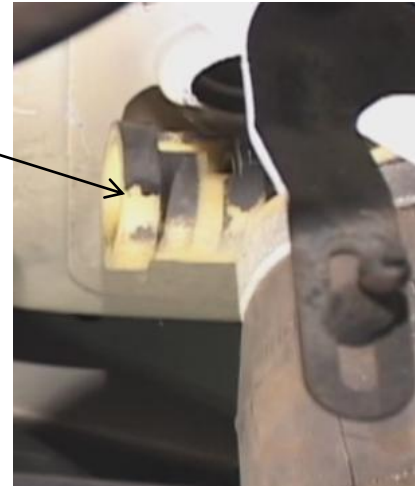


4. Remove the Air Spring solenoid. Rotate solenoid to the first stop. Pull back to release the air from the Spring. Rotate to the second stop and remove solenoid.



First stop

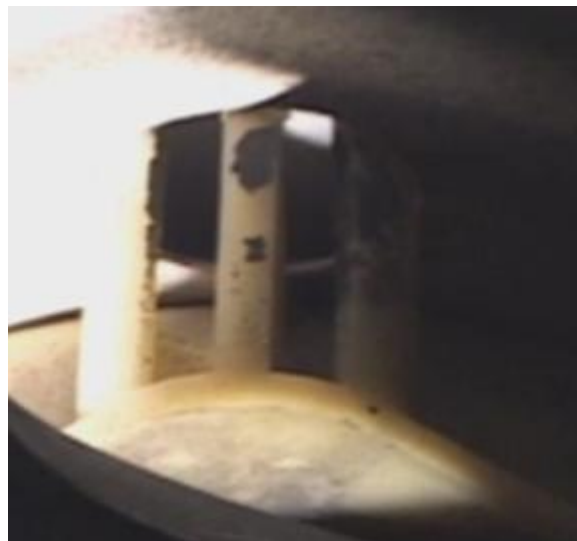
Solenoid removed



5. Remove the 3 bolts from the lower Air Spring seat, and remove the air spring, by releasing the top locking tabs



6. Top locking tabs on air spring, squeeze to release.



7. Bottom locking tabs, press inwards to release. Remove air spring from bottom mount.



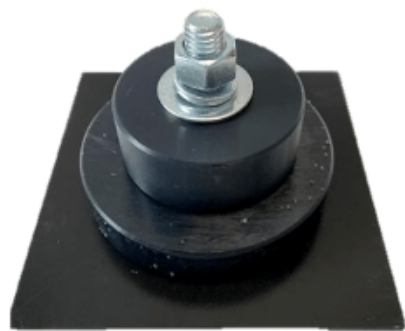
Spring Install

1. The Coil Spring top and bottom bases

Bottom



Top





2. Install the supplied bottom spring support by putting the bolt and washer through the bottom of the spring seat and install the plate and hardware on top of the spring seat. Tighten nut and bolt.



3. Place the Coil Spring, hardware And lower spring seat on a jack And lift into place in the original Air Spring location. Clock the Coil Spring so that the writing is readable From the rear of the vehicle.



4. Guide the top plate ears Into upper mounting holes



5. Continue jacking until you have compressed the spring enough to reinstall the three lower spring seat mounting bolts. (When reinstalling bolts reverse the bolts so that the nuts are on the inside of the spring seat)





Light Out Procedure

NOTES: DO NOT PROCEED TO WIRING REPAIR IF ONLY INSTALLING A 2 WHEEL KIT.

The new springs may soften and settle some during the first few weeks of use.

(2 wheel kit only) - securely plug the two rear air lines with a tight fitting screw and epoxy.

(2 wheel kit only) - plug the sir spring solenoids back into their electrical connector and tie up securely underneath of the car.

Turn the air ride switch in the trunk back "ON", and leave on to control your electronics struts.

Set the ride control button on the dash to "Plush"

(4 wheel kit only) - disconnect compressor.

-

Note: The rear springs may settle some during the first couple of weeks of use. You may have to adjust the front torsion bars to match the level of your new rear springs.

The rear springs can sit a little low if your rear shocks are bad. Test the rear shocks by pushing down on the rear of the car. If the rear bounces then you need to replace the shocks also. (Strutmasters carries replacement shocks if this is encountered.)

If you have electronic struts/shocks, you will need to remove the actuators from the struts/shocks and plug them into the vehicles harness.
Secure the actuators to the body using a zip tie.



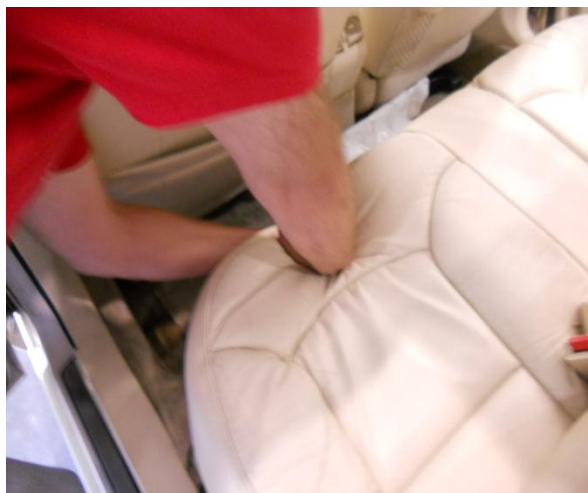
In order to disarm the air ride suspension warning message you must bypass the VDM (Vehicle Dynamic Module) that controls the air ride functions.

The VDM is located under the rear window on the driver's side in the trunk.

The wires for the module can be accessed under the rear seat.

The procedure is as follows:

- Too access the wiring you must remove the rear seat cushion. First locate the brackets the seat cushion lock onto.
- Using both hands first press down firmly then press back-towards trunk. This will release the seat lock. This will need to be done on both sides of the seat, then lift out the seat cushion.

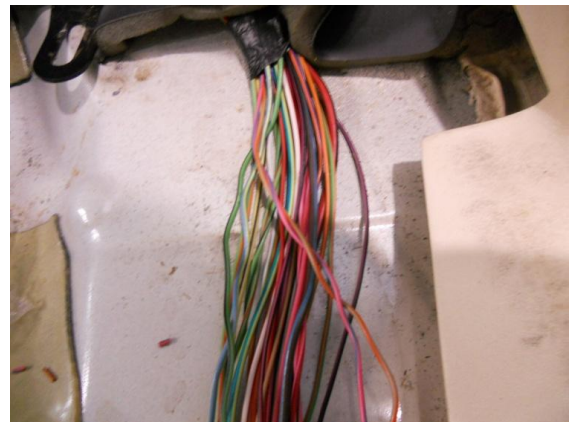




- Then you will remove the sound insulation from under the seat.



- The wiring harness will be located on the driver's side, under the insulation.

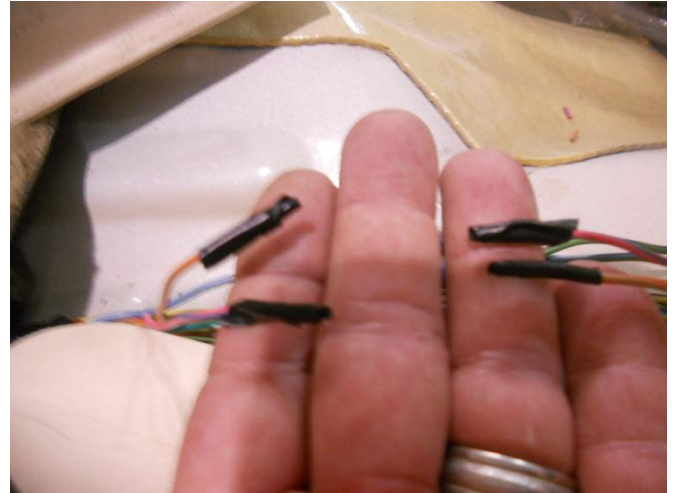


- Separate the wires from the protective covering and locate the following 2 wires that will be twisted together.
 - Pink wire with a Light blue stripe
 - Tan wire with a Orange stripe.





- Cut both of these wires and tape both ends.



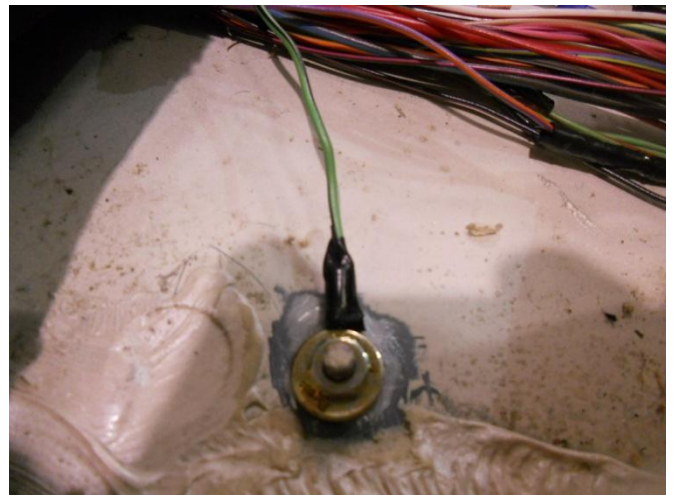
Next you will have to supply power to the power steering solenoid. This is achieved by locating the Light Green wire with the Black stripe. **CAUTION DO NOT USE IF IT IS TWISTED WITH THE LIGHT GREEN WITH RED STRIPED WIRE.** There will be another LG/BK wire that is larger gauge; this will be the one you need.

- The LG/BK wire will need to be cut. The end that goes to the trunk will be taped off. The end that goes to the front of the vehicle will need to go to a body ground. You will find a painted stud under the seat/door trim. Properly clean all paint from this area prior to making ground connection.





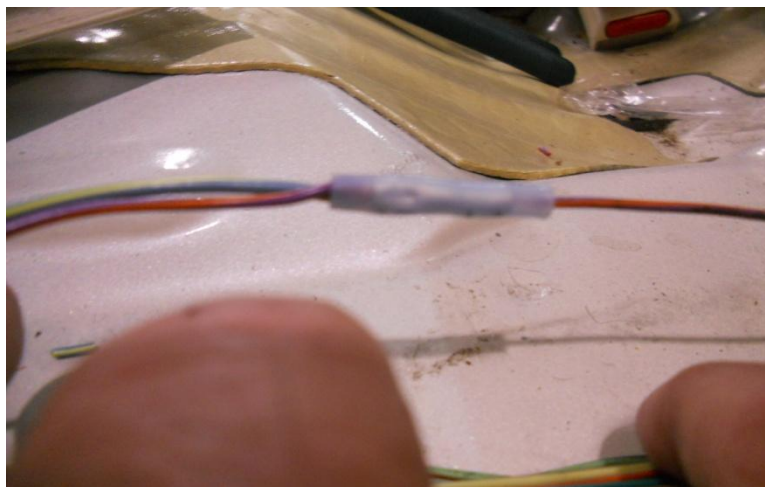
- You will find a painted stud under the seat/door trim. Properly clean all paint from this area prior to making ground connection.
- Suggested body ground LG/BK wire taken to Ground point.



Next you will have to supply power to the steering solenoid. Do this by cutting the Light Blue with Yellow striped wire, and splice it into the 10 amp VDM power wire. Ignition power source.

For 1995-1997 this will be a Purple wire with Orange stripe. (P/O)
For 1998 and up this will be a Light Green with Purple Stripe. (LG/P)

- Cut the LB/Y wire and tape off the end that goes to the trunk. Splice the end that goes to the front of the car into the 10 amp VDM wire. When finished replace seat in reverse order.



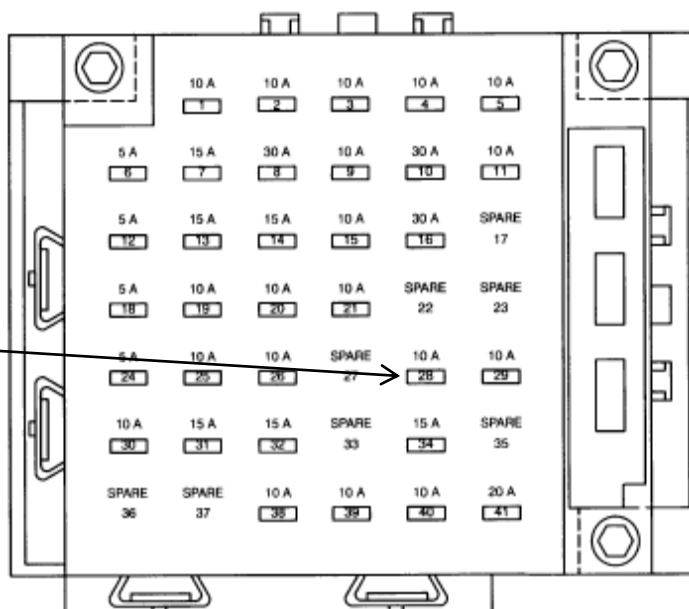
Should you complete this process and still not have power steering the most common cause will be the ground connection.

The second most common cause is the fuse for the 10 amp VDM wire.

That will be fuse # 28 in the IP fuse panel.

The fuse panel is located under the instrument panel to the left side of the steering column.

Fuse 28



Strutmasters is a company founded in 1999 that specializes in Air to Non-Air Suspension Conversion kits and suspension components, Strutmasters has become an industry leader in the world of suspension. What began as a personal project to repair a family's only vehicle, Strutmasters has grown into a nationwide provider of suspension solutions and has truly earned the title "The Suspension Experts®".



STRUTMASTERS
THE SUSPENSION EXPERTS®

Sales**Email:**

salesteam@strutmasters.com

Toll Free: 866-597-2397

Product Support

Email: tech@strutmasters.com

Toll Free: 866-597-2397

Mailing Address

Suspension Experts, LLC

Strutmasters

118 Commerce Drive

Roxboro, NC 27573