

INSTRUCTION GUIDE

You will need: 2 x HoseMate clamps (refer to (1) and (2)), 1 x Joiner, 1 x Multigrip Pliers, 4 x Tension Straps, 1 x Tension Strap Cutter



(1) Measure the outside diameter (mm) of the hose. HoseMate™ clamp sizing is based on outside diameter measurements. Don't assume an outside diameter is correct based on ID, hose wall thickness can vary from application to application.



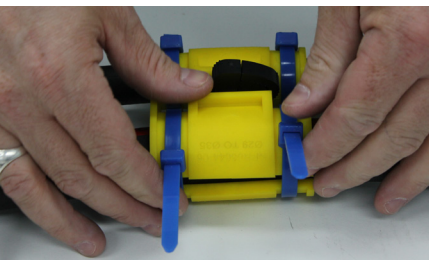
(2) Select the correct HoseMate™ clamp size to suit your hose outside diameter measurement. Refer to the HoseMate™ fitment guide on the next page.



(3) Fit the HoseMate™ clamps onto the hoses by clipping the hoses into the clamps.



(4) Place the bottom of the HoseMate™ clamps into the open Joiner. Close the Joiner fully using the Multigrip pliers.

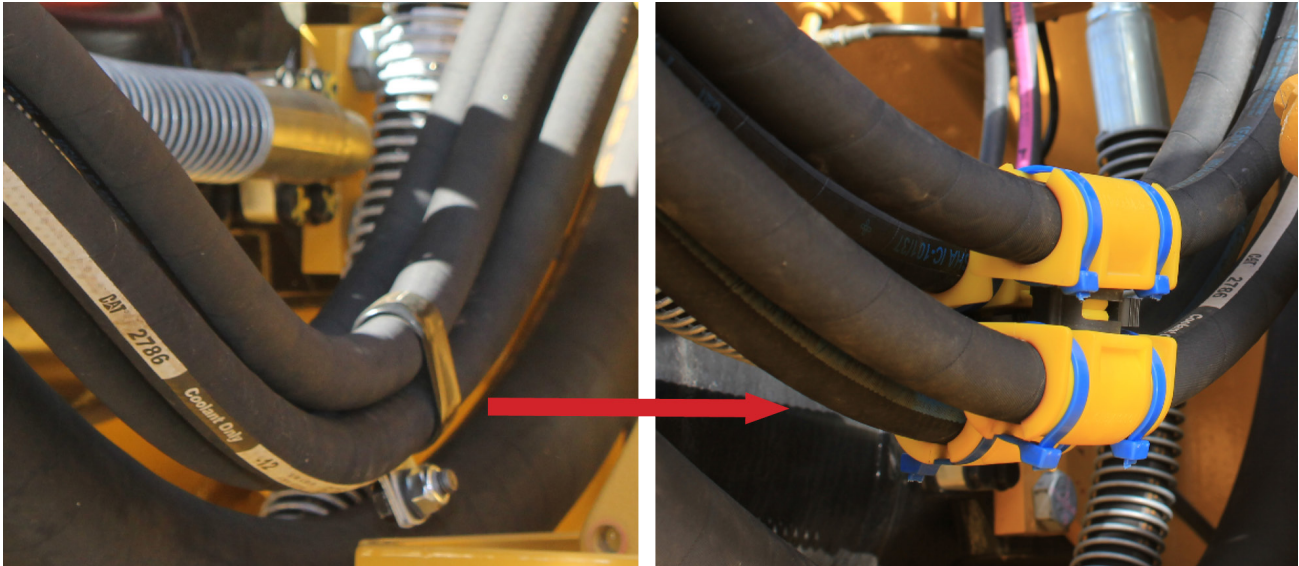


(5) Secure each HoseMate™ clamp with the Tension Straps. Use 2 Tension Straps per clamp to ensure the HoseMate™ assembly is securely positioned and unlikely to move from hose pulsations. The Tension Straps must be firm but not overtightened.



(6) Trim the excess tension straps as much as possible as you go using the Tension Strap Cutter.

BEFORE & AFTER



HOSEMATE™ CLAMP FITMENT GUIDE

Hose outside diameter	HoseMate™ clamp part no.
13mm – 16mm	NPR06644-02
16mm – 20mm	NPR06644-03
20mm – 24mm	NPR06644-04
24mm – 29mm	NPR06644-05
29mm – 35mm	NPR06644-06
35mm – 42mm	NPR06644-07
42mm – 51mm	NPR06644-08
51mm – 61mm	NPR06644-09
61mm – 72mm	NPR06644-10