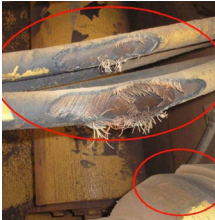


HOSEMATE™

ELIMINATE EXTERNAL ABRASION

Hose failures are the 3rd biggest cause of mobile plant breakdowns.

Majority of these hose failures are caused by external abrasion.



HOSEMATE™ : A READY-MADE SOLUTION



HoseMate™ is a purpose designed polymer product affixed to hydraulic hoses to eliminate external abrasion.

- » Eliminate hose-on-hose abrasion
- » Position hydraulic hoses of different widths together
- » Allow for 360-degree hose swivel
- » V2 fire rated and UV resistant material
- » Extensive testing - heat, cold, chemicals and vibrations

AWARD WINNING PRODUCT
Highly Commended - Innovation Category
Queensland Mining Industry Health & Safety
Conference 2023

National Plastics & Rubber promotes safe working practices therefore, performing your own risk assessment is essential before using these products.

INCREASE THE SERVICE LIFE OF HYDRAULIC HOSES



- » Prevent hydraulic hose failures & blow outs
- » Minimise maintenance & downtime costs
- » Increase machine availability
- » Reduce oil spills & environmental hazards
- » Ensure optimum use of hose is not compromised

REUSABLE, RECYCLABLE & ENVIRONMENTALLY FRIENDLY



- » **Reusable:** In most cases, HoseMate™ will outlast the hose and can be reused on your next application



- » **Recyclable:** HoseMate™ is a thermo polymer product and can be ground down to go into recycled products



- » **Environmentally friendly:** Environmental spills and clean ups will be reduced

INSTRUCTION GUIDE

You will need: 2 x HoseMate clamps (refer to (1) and (2)), 1 x Joiner, 1 x Multigrip Pliers, 4 x Tension Straps, 1 x Tension Strap Cutter



(1) Measure the outside diameter (mm) of the hose. HoseMate™ clamp sizing is based on outside diameter measurements. Don't assume an outside diameter is correct based on ID, hose wall thickness can vary from application to application.



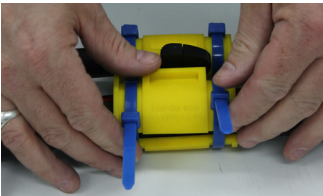
(2) Select the correct HoseMate™ clamp size to suit your hose outside diameter measurement. Refer to the HoseMate™ Fitment Guide on the next page.



(3) Fit the HoseMate™ clamps onto the hoses by clipping the hoses into the clamps.



(4) Place the bottom of the HoseMate™ clamps into the open Joiner. Close the Joiner fully using the Multigrip pliers.



(5) Secure each HoseMate™ clamp with the Tension Straps. Use 2 Tension Straps per clamp to ensure the HoseMate™ assembly is securely positioned and unlikely to move from hose pulsations. The Tension Straps must be firm but not overtightened.



(6) Trim the excess tension straps as much as possible as you go using the Tension Strap Cutter.

FITMENT GUIDE

Hose outside diameter	HoseMate™ clamp - SINGLE	HoseMate™ clamp - 10 PACK
13mm – 16mm	NPR06644-02	NPR16644-02
16mm – 20mm	NPR06644-03	NPR16644-03
20mm – 24mm	NPR06644-04	NPR16644-04
24mm – 29mm	NPR06644-05	NPR16644-05
29mm – 35mm	NPR06644-06	NPR16644-06
35mm – 42mm	NPR06644-07	NPR16644-07
42mm – 51mm	NPR06644-08	NPR16644-08
51mm – 61mm	NPR06644-09	NPR16644-09
61mm – 72mm	NPR06644-10	NPR16644-10
72mm – 86mm	NPR06644-11	NPR16644-11
86mm – 100mm	NPR16644-12	NPR16644-12



Joiner
NPR06644-01



Multigrip Pliers (optional)
NPR07937-00



Tension strap (pack of 100)
To suit NPR06644-02 to NPR06644-06:
NPR17910-00
To suit NPR06644-07 to NPR06644-10:
NPR17911-00

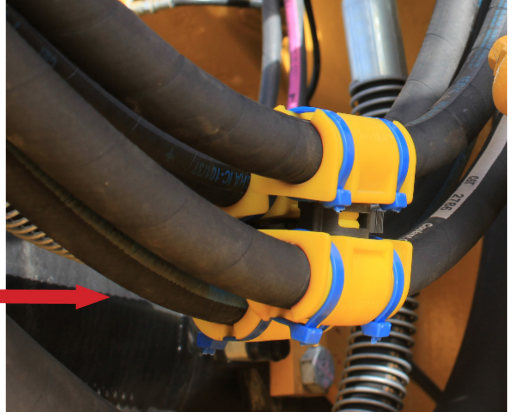
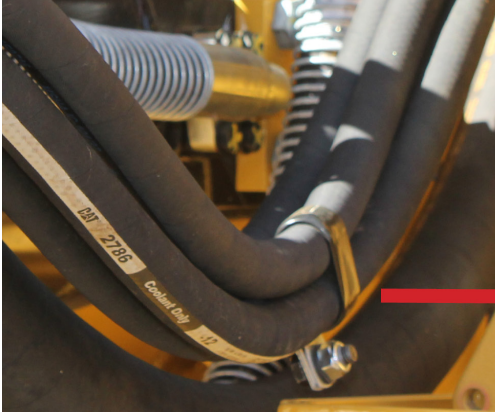


Tension Strap Cutter
NPR07939-00



Scan QR Code for instructional video

HOSEMATE™ IN USE





HOSEMATE.COM.AU

Email sales@hosemate.com.au

Phone 07 3279 3066 (National Plastics & Rubber)