

FISHBONE

OFFROAD



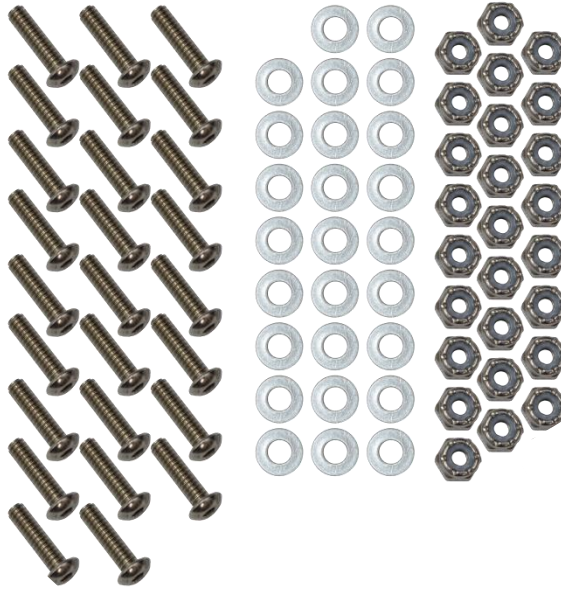
INSTALLATION INSTRUCTIONS

PART No.

FB311XX

Jeep® Wrangler

Fishbone Hood Louver



REQUIRED TOOLS

10mm Socket
3mm Allen
Drill
3/16" Drill Bit

KIT CONTAINS

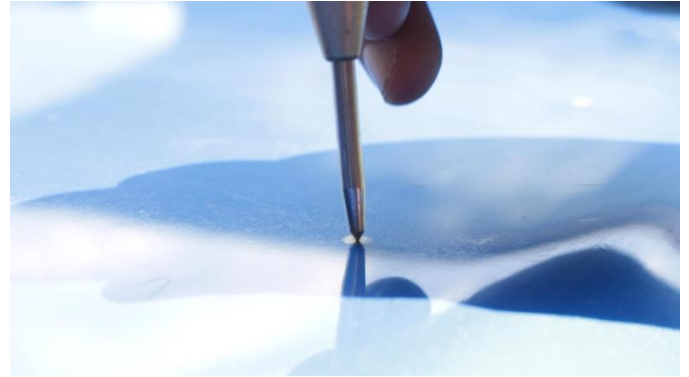
Fishbone Hood Louver
3mm Button Head Bolts
Washers
Nyloc Nut

QTY

1
24 or 26
24 or 26
24 or 26

1) PREPARE YOUR VEHICLE

Remove any flare or accessories on the hood of your vehicle, or anything that might get in the way of the installation, such as windshield bumpers and footman loops.



3) DRILL

Begin drilling the pilots using a 3/16" drill bit. Be careful to not drag metal shavings and across the hood and scratch the paint.



2) MARK DRILL POINTS

Place the louver on your hood as desired. With a marker, mark the location of the bolt holes onto the hood, while ensuring the louver doesn't slide around.



Remove the louver. With a hole punch, punch pilots into the hood to make drilling easier.

Optional: If the louver you purchased is Raw-Unfinished aluminum, begin coating it in your desired color at this time.

4) **INSTALL HOOD LOUVER**

Replace the louver and begin installing it using the included bolts, washers, and nyloc nuts. We recommend loosely securing every bolt before tightening with a 3mm Allen and a 10mm Socket.



5) **REPLACE HOOD ACCESSORIES**

With the louver secured, replace any accessories removed.

6) **ENJOY YOUR NEW FISHBONE OFFROAD HOOD LOUVER!**

