

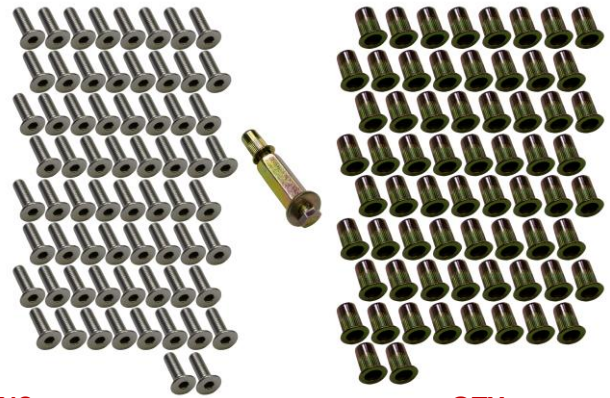
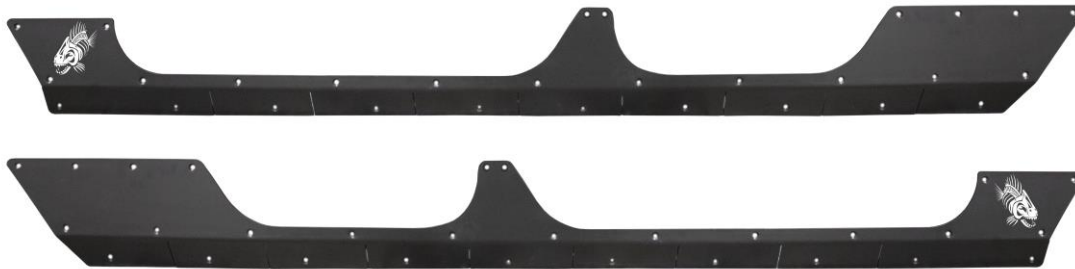


# INSTALLATION INSTRUCTIONS

**PART No.**

**FB23190**

**Jeep® JT Gladiator  
Scale Armor**



### REQUIRED TOOLS

- Wrench set
- Drill
- 23/64" drill bit
- 4mm hex wrench
- Masking tape
- Marker/pen
- Centerpunch
- Hammer

### RECOMMENDED

- Touch-up paint and cotton swab
- M6x1.0 handheld nutsert tool
- Threadlocker
- Drill-Stop Collar

### OPTIONAL

- Bar clamps

### KIT CONTAINS

- Scale armor – left and right
- Nutsert
- Counter Sunk Bolt

### Nutsert tool:

- Bolt
- Flat washer
- Hex spacer

### QTY

- 1ea
- 58
- 58
- 
- 1
- 2
- 1

2318000

## INSTALLATION INSTRUCTIONS

**PART No.**

**FB23190**

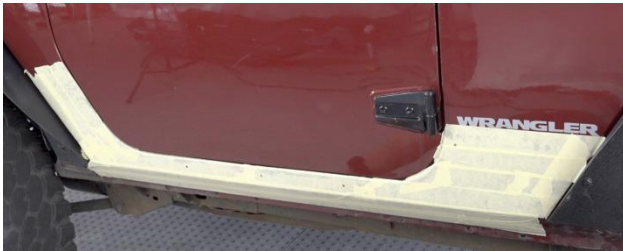
**Jeep® JT Gladiator  
Scale Armor**

**1) REMOVE SIDE STEPS OR SLIDERS**

To have full access to drill and install the scale armor, it is recommended any side steps, rock sliders, etc. are removed prior to installation.

**2) MASK INSTALLATION AREA**

To keep your paint free from scratches during installation and drilling, we recommend covering the entire area with masking tape. This will also make marking hole locations easier with a marker if working with a dark colored vehicle.



**3) MARK CENTER HOLE LOCATIONS**

With the help from a friend, or with a set of bar clamps and the door(s) open, hold the scale armor to the vehicle. Ensure the gaps around the door are even front to back and the armor is level with the bottom of the door.

Mark the two (2) upper holes between the doors.



Remove the scale armor from the vehicle.

Gently tap the center of each mark with a centerpunch. Take care to not hit the punch too

hard as you can dent the body. A small drill bit may be used for a pilot hole instead of a punch.

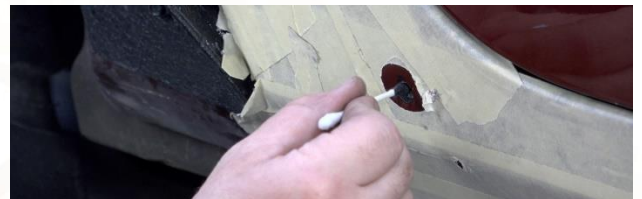
**4) DRILL HOLES**

Drill the centerpunched or pilot hole locations using the 23/64" drill bit and a drill-stop collar. Take care not to drill through the inner panel.



Remove the tape from around the holes, if necessary. This will prevent the tape from being caught behind the nutserts.

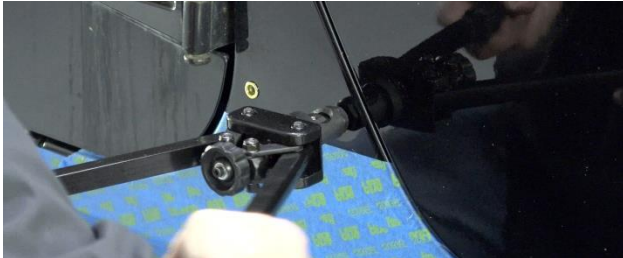
Clean the drilled holes to remove any burrs or chips. Using a cotton swab and paint, touch in any bare metal from the drilling process to prevent rust. Any paint color will work as the nutsert will cover it.



**5) INSTALL NUTSERTS**

Using the supplied nutsert tool, or the recommended handheld tool, install a nutsert into each drilled and painted hole.

For installation procedures for the supplied nutsert tool, see the "NUTSERT INSTRUCTIONS" section. Follow the manufacturer's instructions for the handheld tool if applicable.



#### 6) MARK REMAINING UPPER HOLES

With the nutserts in place, bolt the armor back on the body. Double check alignment around the door(s) and fenders and begin marking the remaining upper bolt hole locations. Do not mark the hole locations below the bend at this time.

#### CAUTION:

Ensure the part is flat against the body and does not move while marking the holes. Constantly check previously marked holes for alignment to ensure all holes are exactly where they need to be.



With the part on or off, carefully centerpunch or predrill the hole locations.

#### NOTE:

On the fenders where there isn't much support behind the panel, it is better to drill a pilot hole instead of using a centerpunch.

#### 7) MARK LOWER HOLES

Remove the armor from the body. Drill all hole locations and install nutserts per steps 4) and 5).

Once again, place the armor on the body and bolt it in place using all currently installed nutsert locations.

Mark and centerpunch all remaining lower holes using the scale armor as a template. Be sure to firmly press the part against the body to ensure the hole will be centered on the nutsert when it is bolted in place.



Again, remove the part from the body. Drill all hole locations and install nutserts per steps 4) and 5).

## INSTALLATION INSTRUCTIONS

**PART No.**

**FB23190**

**Jeep® JT Gladiator  
Scale Armor**

**8) FINAL ASSEMBLY**

Remove any remaining tape if necessary and install the scale armor to the body using the supplied hardware and a light amount of threadlocker. Loosely install all hardware at first to ensure everything is straight and lined up.

**9) TIGHTEN ALL HARDWARE**

Take care not to overtighten any bolts to avoid spinning a nutsert.



**10) REPEAT ON OPPOSITE SIDE**

Repeat all procedures on the opposite side of the vehicle.

**11) NUTSERT INSTRUCTIONS**

To use the supplied nutsert tool, prepare the tool as shown in the image. A washer on either side of the hex spacer, and a nutsert installed at the end of the bolt.



Insert the nutsert into a prepared 23/64" hole.

While using a wrench to hold the hex spacer stationary, begin tightening the bolt with a ratchet and socket. As you tighten, the bolt will draw the nutsert together crimping it in place. Continue to ratchet until the nutsert is fully seated. **Take care**

**not to over tighten.** This can damage the nutsert and cause it to lose grip.

Once seated, remove the bolt, hex spacer and washers from the nutsert for reuse. Inspect your work to ensure the nutsert was seated correctly.

**NOTE:**

When installing the part, take care to not cross-thread the bolt into the nutsert. Doing so can cause the nutsert to spin and make it very difficult to remove the bolt. Always start threading bolts by hand, then use a tool for final tightening to avoid cross-threading.

**12) ENJOY YOUR NEW FISHBONE OFFROAD SCALE ARMOR!**