

INSTALLATION INSTRUCTIONS

PART No. FB22400 & FB22401

Dodge 2019-2021 Ram 1500
Pike Front Bumper & Winch Plate



FB22400



FB22401



REQUIRED TOOLS

17mm Socket
7mm Socket
Jack
Help of a Friend

KIT CONTAINS

FB22400:

Pike Front Bumper	1
M10 Nylok Nut	6
Plastic Retainer	6
M10 Flat Washer	6
M4x Hex Bolt	12
Large Stud Plate	2
Small Stud Plate	2

FB22401:

Winch Plate	1
M10x1.5 Flanged Hex Bolt	4
M10 Lock Nut	4
M12x1.75 Carriage Bolt	2
M12x1.75 Flanged Nut	2
M14 Spacer	2
Stud Plate	2
Support Bracket	2

INSTALLATION INSTRUCTIONS

PART No. FB22400 & FB22401

**Dodge 2019-2021 Ram 1500
Pike Front Bumper & Winch Plate**

1) PREPARE YOUR BUMPER

FB22400:

Remove your vehicle's factory bumper.

Install your sensors in the same order they were in on the factory bumper, if applicable.

Install your pod lights and lightbar of choice into the new bumper.



Install any winch accessory. If you wish to paint the accent panels, do so now at this time.



Insert the included stud plates into the bumper brackets, and use the plastic retainers to keep them from falling out. The large plate goes behind the top two holes, and the small single stud goes behind the outer corner hole.



2) INSTALL BUMPER

With the help of a friend, push the bumper onto the frame rails and secure it with the included M10 Nuts and a 17mm socket and wrench.



INSTALLATION INSTRUCTIONS

PART No. FB22400 & FB22401

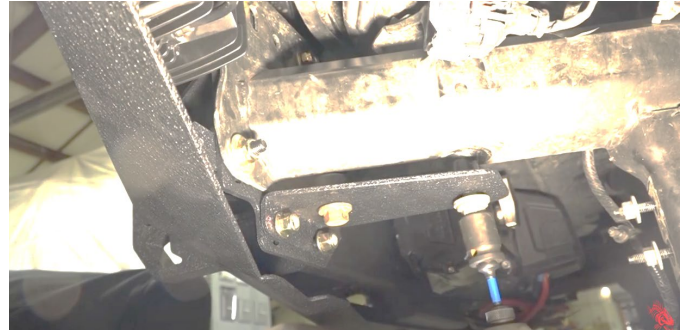
Dodge 2019-2021 Ram 1500 Pike Front Bumper & Winch Plate

3) PREPARE YOUR WINCH PLATE

Install your winch onto the winch plate using its included factory hardware.



Install the support brackets into the factory tow hook locations. Notice how one of the holes in the frame protrudes. Use the included spacer on the hole that is not raised, and install the brackets using the factory hardware, and the included nuts into the bottom holes of the bumper brackets.



4) INSTALL WINCH PLATE

Using a jack, lift the winch plate up into the bumper and secure it to the side holes of the bumper brackets with the included M10 bolts. The 2 carriage bolts will secure the center of the plate into the bottom of the bumper.

