



INSTALLATION INSTRUCTIONS

PART No.

FB22397

**13-Current Dodge Ram
Front Bumper**



VIDEO AVAILABLE



REQUIRED TOOLS

Die Grinder
18mm Socket
5mm Socket

Help of a friend

KIT CONTAINS

Front Bumper
Nut Plate
M12 Nyloc Nut
M12 Washer
Plastic Washer
Winch Plate
Flange Bolt
Flange Nut
Trim Accents
Small Nut Plate
Small Nyloc Nut

QTY

1
4
8
8
8
1
2
2
2
2
4

2137400

INSTALLATION INSTRUCTIONS

PART No.

FB22397

**13-Current Dodge Ram
Front Bumper**

1) REMOVE EXISTING BUMPER

Begin removing your vehicle's existing bumper and grille. We show how to do this in another video over at www.fishboneoffroad.tv

Remove the sensors and sensor wiring harness.

2) SETUP

Depending on the state of your vehicle, with your die grinder, grind out the show hole so that the included nut plates can slide through.

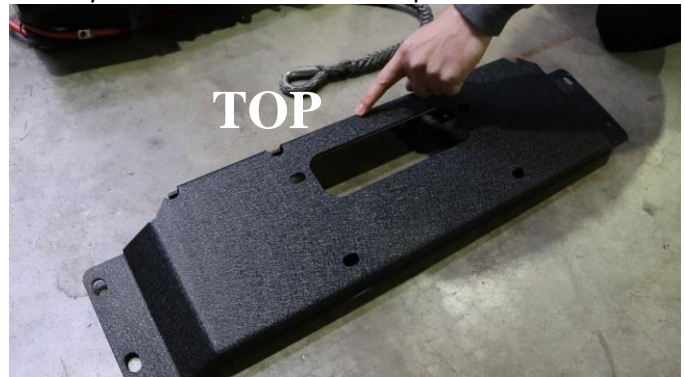


In the back of the bumper, install 2 of the nut plates into the outboard bumper-to-frame brackets, and screw on the included plastic washers to help keep them in place.



If applicable, install your sensors and wiring harness at this time.

Install your winch onto the winch plate.



3) INSTALL THE BUMPER

With the help of a friend and the 4 of the included m12 nuts and washer, secure the bumper to the frame rails with an 18mm socket.

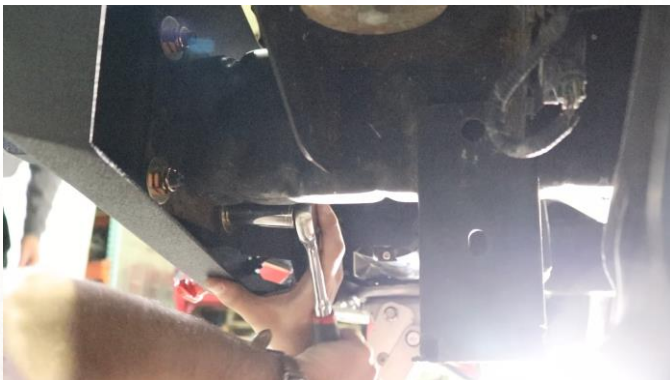




Install the winch plate with the remaining nut plates and hardware into the inboard bumper brackets.



Install the two trim accents with the small nutplates and small nyloc nuts with a 5mm socket.

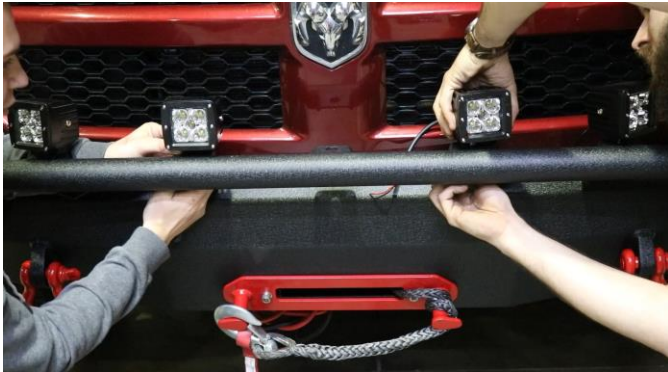


With the 2 flanged bolts and hex nuts, secure the bottom of the winch plate.





Install your pod lights.



Reinstall your grille.

