



INSTALLATION INSTRUCTIONS

PART No.

FB21295

**Toyota® 2005+ Tacoma w/ Front Rail
Bed Rail Utility Vehicle Tie Down Kit**

5X



REQUIRED TOOLS

19mm Socket

KIT CONTAINS

Tie Down Bracket
Wheel Chock Bracket
M12 Hex Bolt
M12 Flat Washer
M12 Lock Washer
T-Nut

QTY

3
2
5
5
5
5

2129500

INSTALLATION INSTRUCTIONS

PART No.

FB21295

**Toyota® 2005+ Tacoma w/ Front Rail
Bed Rail Utility Vehicle Tie Down Kit**

1) PREPARE YOUR BED

Open your bed and begin removing the trail rail caps on all three rails. Insert 1 T-Nut into the driver and passenger side rails, and 3 into the front rail, and position them as shown, or as desired.

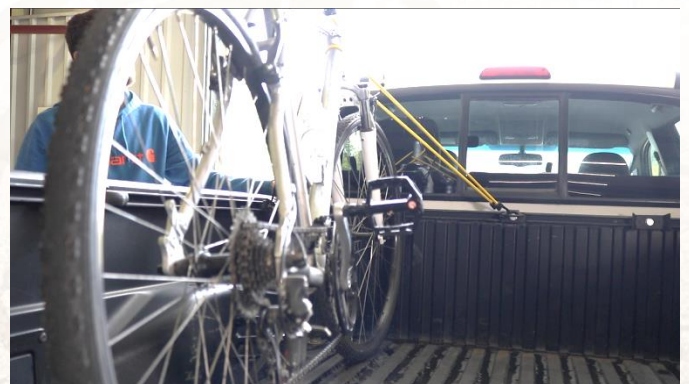


2) INSTALL THE BRACKETS

The driver and passenger side rails should each have a tie down bracket, and the front rail have the two wheel chocks and the remaining tie down brackets.



Determine the spacing needed for your gear and slide the T-Nuts as desired. Begin securing the brackets with the included hex bolts and washers with a 19mm socket.



Secure your gear.

3) ENJOY YOUR UTILITY VEHICLE TIE DOWN KIT