



RA-1425-M



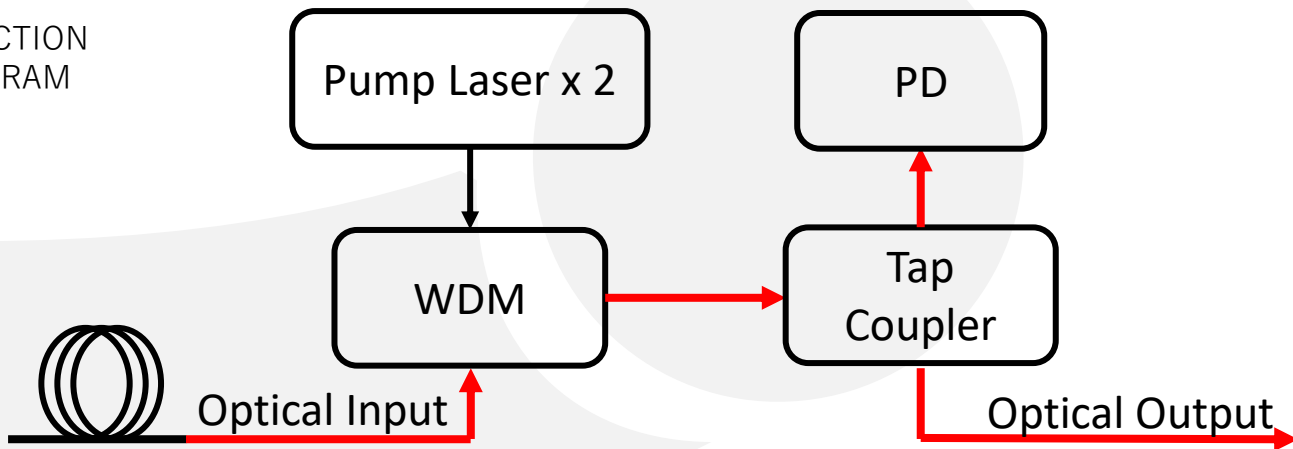
DEVICE 13 dB Gain Raman Amplifier, 1525 to 1535 nm

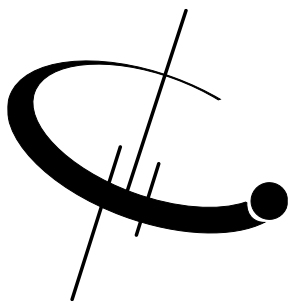
OVERVIEW Optilab Raman Amplifier Rackmount Units are designed for distributed Raman amplification in a narrow spectral range in C band. Configured with two high power pump laser diodes at 1425 nm, the RA-1425-M unit provides over 13 dB On/Off gain flattened amplification from 1525 – 1535 nm. The unit includes micro-controller based laser current control circuitry for enhanced stability and reliability. RA-1425-M is an ideal amplifier for single-channel to multi-channel long-haul transmission and fiber sensor systems. It is equipped with LabVIEW (TM) remote user interface for easy operation. Contact Optilab for more information.

- FEATURES**
- 1525 – 1535 nm
 - >13 dB Gain @ -15 dBm Input
 - >16 dB Gain @ -35 dBm Input
 - Excellent Stability
 - LabVIEW Remote Interface

- USE IN**
- Long Haul / Ultra-Long Haul Systems
 - Long Repeaterless Links
 - Low Latency Links
 - 10 / 40 Gbps Transmission
 - DWDM Networks

FUNCTION DIAGRAM





RA-1425-M

SPECIFICATIONS

GENERAL

Pump Wavelength	1425 nm
Operating Wavelength	1525 – 1535 nm
Pump Power	Up to 500 mW
Input Signal Level	-40 to -10 dBm
Averaged On/Off Gain @ -15 dBm Input	> 13 dB
Averaged On/Off Gain @ -35 dBm Input	> 16 dB
Gain Flatness	< ±1 dB
Signal Insertion Loss	< 1 dB
Output Stability	< ± 0.1 dB for 24 hours
Degree of Polarization	< 5%

MECHANICAL

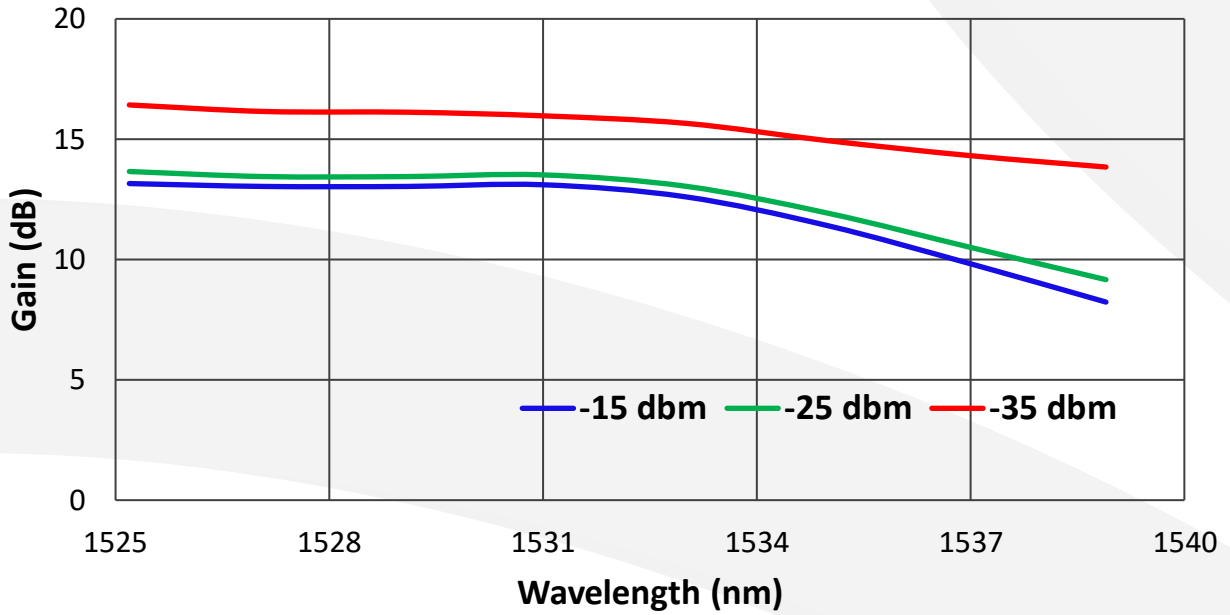
Operating Temperature	-5°C to + 55°C
Storage Temperature	-40 °C to 80 °C
Operating Humidity	0% to 90% Relative Humidity
Power Supply	110 – 240 VAC
Remote Port	USB 2.0
Dimensions	200 mm x 120 mm x 25 mm
Optical Input Fiber	SMF-28 with 3 mm Jacket (no connector)
Output Fiber Connector	FC/APC



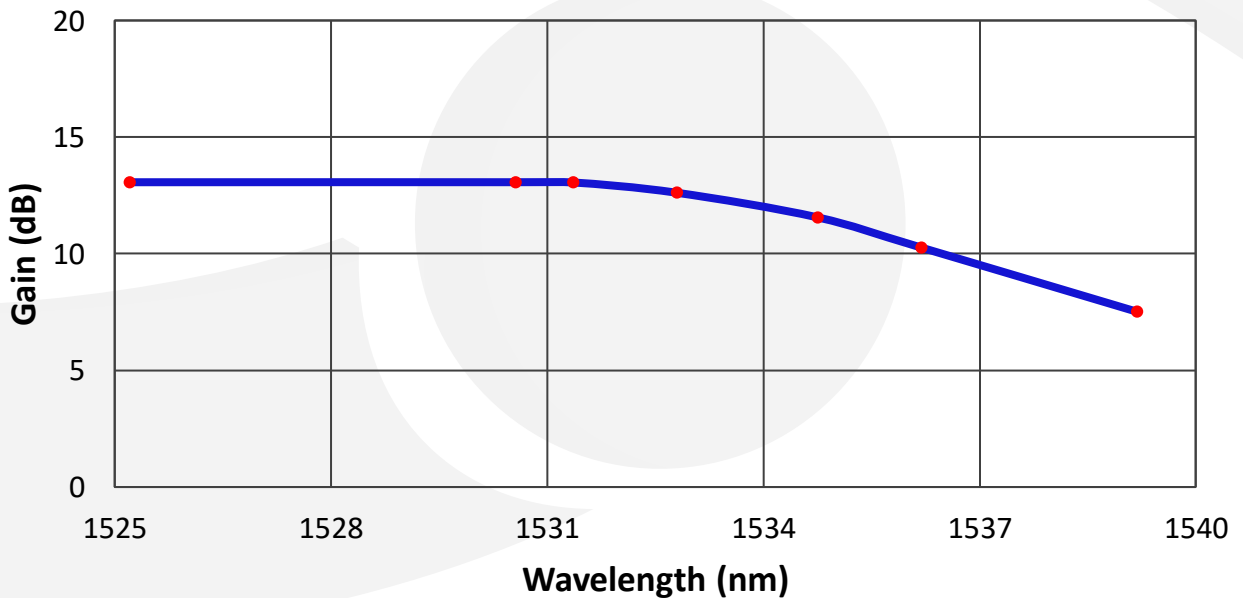


RA-1425-M

Typical On/Off Gain @ Different Input Power Levels



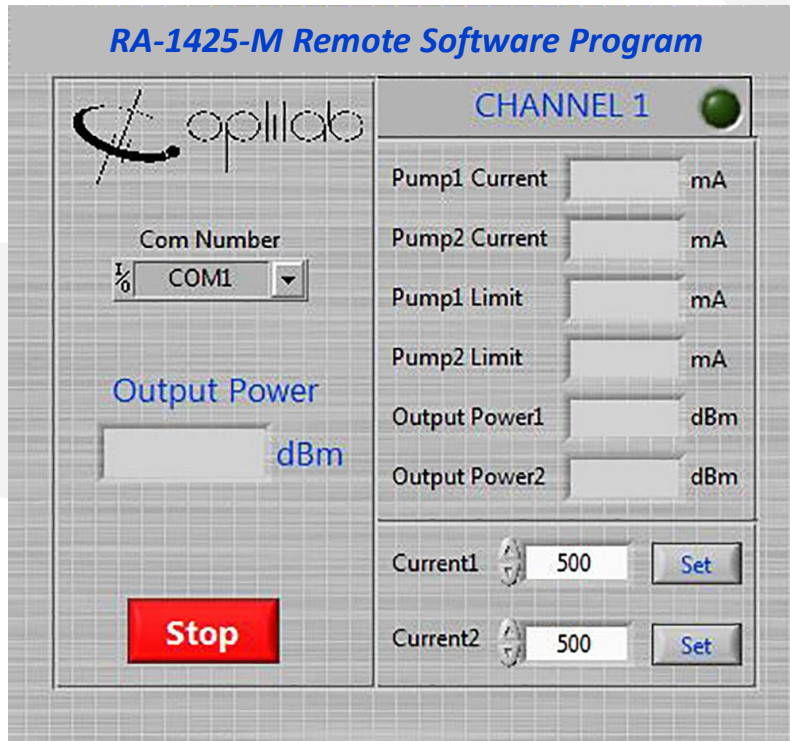
Multi-Channel On/Off Gain Spectrum @ an Averaged Input Power of -20 dBm





RA-1425-M

LabVIEW Remote Control Interface



Typical Application Diagram

