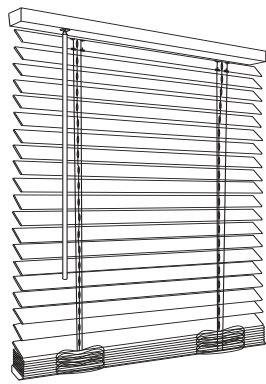


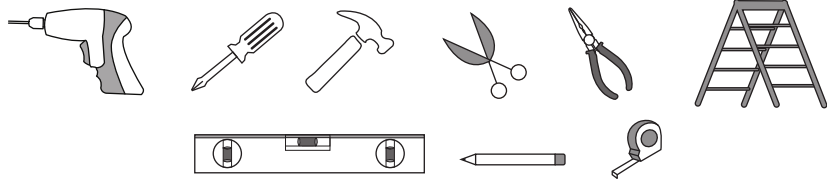
1" Cordless Vinyl Mini Blinds Instructions



1 Check the Hardware

- A** Vinyl Blind x 1
- B** Mounting Bracket
23" - 41" = 2
42" - 72" = 3
73" - 102" = 4
- C** Wand x 1
- D** Screw
23" - 41" = 4
42" - 72" = 6
73" - 102" = 8
- E** Hold down Bracket x 2
- F** Mini Screws x 4

2 Gather other necessary tools



3 Choose your mount

Now choose whether to mount your blind to the inside or outside of your window and choose the appropriate instruction to the right.

An outside mount will mount above your window recess, and the brackets will mount to your wall, front-facing trim or ceiling.

An inside mount will mount inside your window recess and brackets will mount to the top of your window recess.

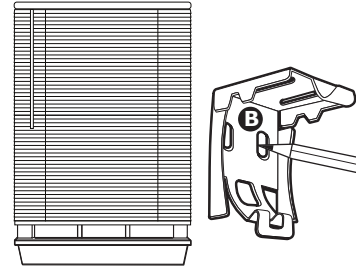
Position Blinds - Outside Mount

Tip: Your blind should be wider and longer than your window.

1 Mark Holes

Mark the screw holes at the back or top of the **bracket B**.

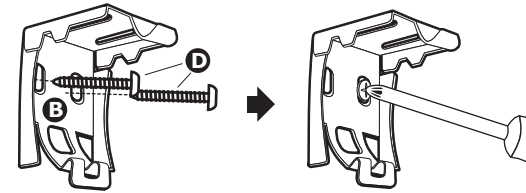
- Pre-drill holes for mounting screws and use level at top of brackets to ensure straight alignment.



2 Install Brackets

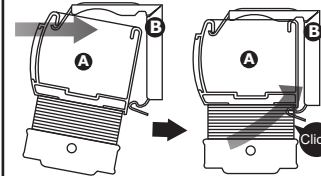
Attach the **brackets B** with the **screws D** provided and tighten the **screws** in place.

- When mounting **brackets** on wall board or plaster, use the **anchors**.



3 Insert Headrail

Insert the top front of the **head rail A** into the front lip of the **brackets B**. Push the rail into place.



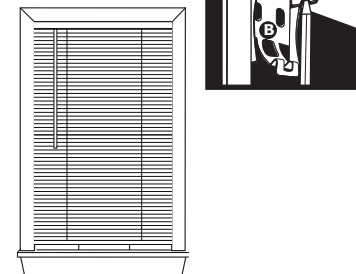
Position Blinds - Inside Mount

Tip: Your blind should be slightly less wide than your window to fit.

1 Mark Holes

Mark the screws holes at the back or top of the **bracket B**.

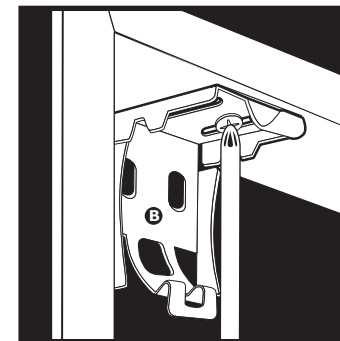
- Pre-drill holes for mounting **screws**.
- For wider widths and added support, install the center support bracket when provided. Install at approximate center of the headrail.



2 Install Brackets

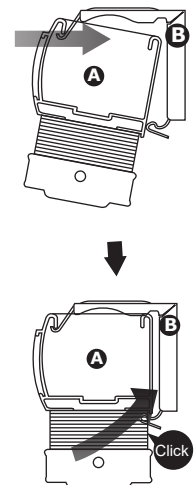
Attach the **brackets B** with the **screws D** provided and tighten the **screws** in place.

- Use the provided when attaching the **brackets** to the ceiling or when the depth of the recess exceeds 1-1/2 inches.
- When mounting **brackets** on wall board or plaster, use the **anchors**.

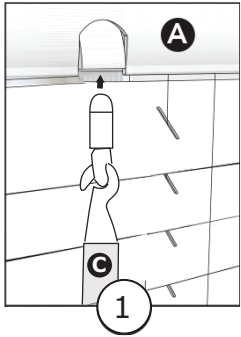


3 Insert Headrail

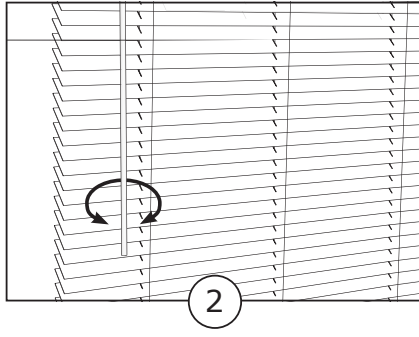
Insert the top front of the **head rail A** into the front lip of the **brackets B**. Push the **head rail** into place.



4 Attach Tilter and Wand



1. Insert the **wand C** through the hole.



2. Rotate the **wand C** clockwise or counterclockwise to open or close the blind slats.

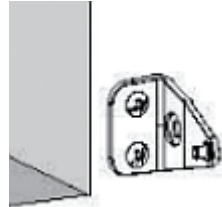
4 Installing the hold down brackets

Optional: 'Hold down brackets' are used to keep your blinds steady. Install the **hold down brackets B** with **mini screws F** next to the blinds aligning the bottom rail.

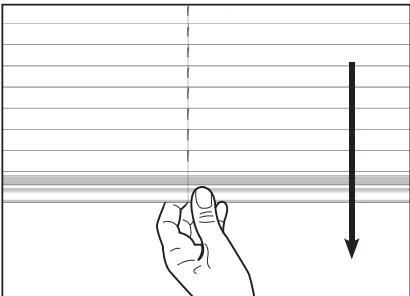
Inside Mount



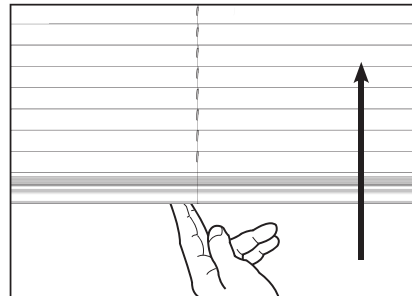
Door or Outside Mount



Quick How-to-use Guide



To lower the blinds pull down from the bottom to the desired height.



To raise the blind push up from the bottom to the desired height

Tips

I am missing my brackets or mounting hardware:

Contact the store or online store that you purchased the blind(s) from and they will work with the manufacturer to get you your missing parts ASAP!

My blind is hitting an obstacle like the trim or a handle:

You may need to remount your blinds further away from the surface that is being hit or rubbed. This may require an extension bracket or bracket spacer, both of which you can get at your local hardware store.

My blind mounted on my door bangs against the door:

Installing hold down brackets will secure the bottom of the blind to the door.

My slats are not in sync:

Grab the slat(s) that is not in sync with the rest with two hands and slowly push it back in sync with the others. Now turn the tilt wand to ensure they open and close together.

My blind is not completely level:

Pull the blind all the way down. Now reach in to find the two cords that are doing the lifting and pull them both out and let them snap back. This should correct any balancing issues.

My blind won't raise or lower:

You may need to look inside your headrail to ensure that there are not parts or objects that the lift cord is snagged on or is keeping the lift mechanism from freely moving.