



Pigüi-Mania!

Incredible discounts on your favorite sweets!!!



About Us

Dulces Pigüi® USA is a Mexican candy distributor located in the city of Compton, California. That serves its local convenient stores and distributors around the nation. Our largest product distributed are lollipops known as Slaps which are manufactured in Mexico.

Our Products

At Dulces Pigüi, we're excited to present to you an extensive array of authentic Mexican candies, available for your enjoyment right here in our online store. Indulge in the rich flavors and vibrant culture of Mexico with our handpicked selection. Explore our diverse range of treats and satisfy your sweet cravings today!"

The Slaps logo features the word "SLAPS" in a bold, red-to-yellow gradient font with a blue outline, accompanied by a yellow starburst graphic.

The CachaPon DOBLEX logo features the brand name "CachaPon" in a stylized font above the word "DOBLEX" in a bold, red-to-yellow gradient font with a blue outline.

The Jumbo logo features the word "Jumbo" in a bold, red-to-yellow gradient font with a blue outline.

The Bibi Polviz logo features the brand name "Bibi Polviz" in a stylized font with a red-to-yellow gradient and a blue outline.

The Bibi Fruity logo features the brand name "Bibi Fruity" in a stylized font with a red-to-yellow gradient and a blue outline.



DOBLEX PICOSITA SLAPS 10 PCS

DOUBLE-FLAVORED SPICY SOFT CANDY LOLLIPOP



NUTRITION FACTS

Net Weight:	3.33 oz	Sodium:	0
Serving:	10 per container	Potassium:	0
Calories:	30	Carbohydrate:	8 g
Calories from Fat:	0	Dietary Fiber:	0
Total Fat:	0	Sugars:	8 g
Saturated Fat:	0	Protein:	0
Polyunsaturated:	0	Vitamin A:	0
Monounsaturated:	0	Vitamin C:	0
Trans Fat:	0	Calcium:	0
Cholesterol:	0	Iron:	0

INGREDIENTS

Sugar, corn syrup, iodized salt, malic acid (flavor enhancer), fumaric acid (flavor enhancer), citric acid (flavor enhancer), modified corn starch, chili, gelatin, artificial flavors and colors (Fd&c blue #1, fd&c red #40, fd&c yellow #5)

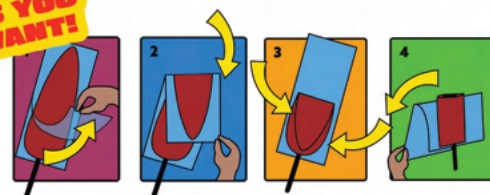
Azúcar, glucosa, sal yodatada, ácido málico (potencializador de sabor), ácido fumárico (potencializador de sabor) ácido cítrico (potencializador de sabor), almidón modificado, chile, grenetina, sabores artificiales y colorantes artificiales (rojo allura ac [en E.U.A. Rojo #40], azul brillante fcf [en E.U.A. Azul #1], * tartrazina [en E.U.A. Amarillo #5]).

dulces-pigui.com
 Doroteo Hernandez
 3215 N Alameda St.
 Suite F, Compton, CA 90222

PHONE/TEL:
 (310) 886-7884
 doro_dulcespigui@yahoo.com
 info@dulces-pigui.com



FOLD IT AS YOU WANT!



SHIPPING SPECIFICATION

UNIT OF MEASUREMENT	UPC OF BOX	CONTENT	UPC OF PACKAGE
BOX	6 40793048867	40 PKGS / 10 PCS	6 40793048836

DISPLAY WEIGHT	WEIGHT OF BOX
3.33 OZ (95 G)	9.5 LBS

BOXES IN PALLET	LAYERS	EACH LAYER	LBS OF PALLET
156	12	13	1,624 LBS



BOX MEASURE
 LONG* WIDTH* HEIGHT
 13 5/8" - 9 1/4" - 4 1/8"



MEASUREMENT OF PALLET
 WIDTH* LONG X HEIGHT
 42 X 48 X 5 1/2'

TROPICAL SLAPS 10 PCS

ACIDULATED SOFT CANDY LOLLIPOP



NUTRITION FACTS

Net Weight:	3.33 oz	Sodium:	0
Serving:	10 per container	Potassium:	0
Calories:	30	Carbohydrate:	8 g
Calories from Fat:	0	Dietary Fiber:	0
Total Fat:	0	Sugars:	8 g
Saturated Fat:	0	Protein:	0
Polyunsaturated:	0	Vitamin A:	0
Monounsaturated:	0	Vitamin C:	0
Trans Fat:	0	Calcium:	0
Cholesterol:	0	Iron:	0

INGREDIENTS

Sugar, corn syrup, iodized salt, citric acid, malic acid, chili, artificial flavors and colors (Fd&c blue #1, fd&c red#40, fd&c yellow #5), titanium dioxide.

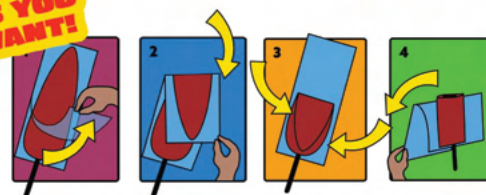
Azúcar, glucosa, sal yodatada, ácido cítrico, ácido málico, chile, saborizantes y colorantes artificiales (azul brillante fcf [en E.U.A. Azul#1], rojo allura ac [en E.U.A. Rojo #40], *tartrazina [en E.U.A. Amarillo #5], dióxido de titanio.

dulces-pigui.com
 Doroteo Hernandez
 3215 N Alameda St.
 Suite F Compton, CA 90222

PHONE/TEL:
 (310) 886-7884
 doro_dulcespigui@yahoo.com
 info@dulces-pigui.com



FOLD IT AS YOU WANT!



SHIPPING SPECIFICATION

UNIT OF MEASUREMENT	UPC OF BOX	CONTENT	UPC OF PACKAGE
BOX	6 40793048812	40 PKGS / 10 PCS	6 40793048744

DISPLAY WEIGHT	WEIGHT OF BOX
3.33 OZ (95 G)	9.5 LBS

BOXES IN PALLET	LAYERS	EACH LAYER	LBS OF PALLET
156	12	13	1,624 LBS



BOX MEASURE
 LONG* WIDTH* HEIGHT
 13 5/8 " - 9 1/4 " - 4 1/8 "



MEASUREMENT OF PALLET
 WIDTH* LONG X HEIGHT
 42 X 48 X 5 1/2'

TAMARIND BLUE SLAPS 10 PCS

ACIDULATED SOFT CANDY LOLLIPOP



NUTRITION FACTS

Net Weight:	3.33 oz	Sodium:	0
Serving:	10 per container	Potassium:	0
Calories:	30	Carbohydrate:	8 g
Calories from Fat:	0	Dietary Fiber:	0
Total Fat:	0	Sugars:	8 g
Saturated Fat:	0	Protein:	0
Polyunsaturated:	0	Vitamin A:	0
Monounsaturated:	0	Vitamin C:	0
Trans Fat:	0	Calcium:	0
Cholesterol:	0	Iron:	0

INGREDIENTS

Sugar, corn syrup, iodized salt, citric acid, malic acid, chili, artificial flavors and colors (fd&c blue #1), titanium dioxide.

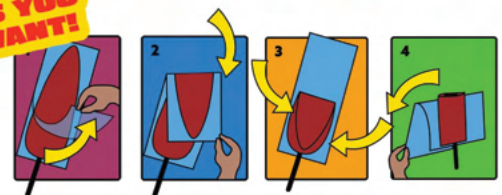
Azúcar, glucosa, sal yodatada, ácido cítrico, ácido málico, chile, saborizantes y colorantes artificiales (azul brillante fcf [en E.U.A. azul #1], dióxido de titanio.



dulces-pigui.com
 Doroteo Hernandez
 3215 N Alameda St.
 Suite F Compton, CA 90222

PHONE/TEL:
 (310) 886-7884
 doro_dulcespigui@yahoo.com
 info@dulces-pigui.com

FOLD IT AS YOU WANT!



SHIPPING SPECIFICATION

UNIT OF MEASUREMENT	UPC OF BOX	CONTENT	UPC OF PACKAGE
BOX	6 40793048782	40 PKGS / 10 PCS	6 40793048706

DISPLAY WEIGHT	WEIGHT OF BOX
3.33 OZ (95 G)	9.5 LBS

BOXES IN PALLET	LAYERS	EACH LAYER	LBS OF PALLET
156	12	13	1,624 LBS



BOX MEASURE
 LONG* WIDTH* HEIGHT
 13 5/8 " - 9 1/4 " - 4 1/8 "



MEASUREMENT OF PALLET
 WIDTH* LONG X HEIGHT
 42 X 48 X 5 1/2'

GREEN APPLE SLAPS 10 PCS

ACIDULATED SOFT CANDY LOLLIPOP



NUTRITION FACTS

Net Weight:	3.33 oz	Sodium:	0
Serving:	10 per container	Potassium:	0
Calories:	30	Carbohydrate:	8 g
Calories from Fat:	0	Dietary Fiber:	0
Total Fat:	0	Sugars:	8 g
Saturated Fat:	0	Protein:	0
Polyunsaturated:	0	Vitamin A:	0
Monounsaturated:	0	Vitamin C:	0
Trans Fat:	0	Calcium:	0
Cholesterol:	0	Iron:	0

INGREDIENTS

Sugar, corn syrup, iodized salt, citric acid, malic acid, chili, artificial flavors and colors (fd&c blue #1, fd&c yellow #5), titanium dioxide.

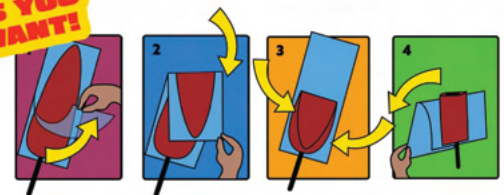
Azúcar, glucosa, sal yodatada, ácido cítrico, ácido málico, chile, saborizantes y colorantes artificiales (azul brillante fcf [en E.U.A. azul #1] * tartrazina [en E.U.A. amarillo #5]), dióxido de titanio.

dulces-pigui.com
 Doroteo Hernandez
 3215 N Alameda St.
 Suite F Compton, CA 90222

PHONE/TEL:
 (310) 886-7884
 doro_dulcespigui@yahoo.com
 info@dulces-pigui.com



FOLD IT AS YOU WANT!



SHIPPING SPECIFICATION

UNIT OF MEASUREMENT	UPC OF BOX	CONTENT	UPC OF PACKAGE
BOX	6 40793048799	40 PKGS / 10 PCS	6 40793048720
DISPLAY WEIGHT	WEIGHT OF BOX		
3.33 OZ (95 G)	9.5 LBS		
BOXES IN PALLET	LAYERS	EACH LAYER	LBS OF PALLET
156	12	13	1,624 LBS



BOX MEASURE
 LONG* WIDTH* HEIGHT
 13 5/8 " - 9 1/4 " - 4 1/8 "



MEASUREMENT OF PALLET
 WIDTH* LONG X HEIGHT
 42 X 48 X 5 1/2'

WATERMELON SLAPS 10 PCS

ACIDULATED SOFT CANDY LOLLIPOP



NUTRITION FACTS

Net Weight:	3.33 oz	Sodium:	0
Serving:	10 per container	Potassium:	0
Calories:	30	Carbohydrate:	8 g
Calories from Fat:	0	Dietary Fiber:	0
Total Fat:	0	Sugars:	8 g
Saturated Fat:	0	Protein:	0
Polyunsaturated:	0	Vitamin A:	0
Monounsaturated:	0	Vitamin C:	0
Trans Fat:	0	Calcium:	0
Cholesterol:	0	Iron:	0

INGREDIENTS

Sugar, corn syrup, iodized salt, citric acid, malic acid, chili, artificial flavors and colors (fd&c red # 40), titanium dioxide.

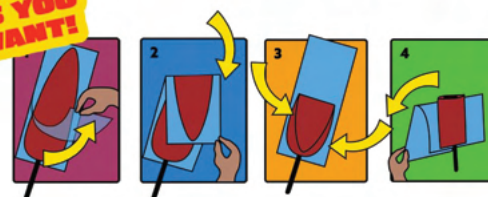
Azúcar, glucosa, sal yodatada, ácido cítrico, ácido málico, chile, saborizantes y colorantes artificiales (rojo allura ac [en E.U.A. rojo #40]), dióxido de titanio.

dulces-pigui.com
Doroteo Hernandez
3215 N Alameda St.
Suite F Compton, CA 90222

PHONE/TEL:
(310) 886-7884
doro_dulcespigui@yahoo.com
info@dulces-pigui.com



FOLD IT AS YOU WANT!



SHIPPING SPECIFICATION

UNIT OF MEASUREMENT	UPC OF BOX	CONTENT	UPC OF PACKAGE
BOX	6 40793048805	40 PKGS / 10 PCS	6 40793048737

DISPLAY WEIGHT	WEIGHT OF BOX
3.33 OZ (95 G)	9.5 LBS

BOXES IN PALLET	LAYERS	EACH LAYER	LBS OF PALLET
156	12	13	1,624 LBS



BOX MEASURE
LONG* WIDTH* HEIGHT
13 5/8 " - 9 1/4 " - 4 1/8 "



MEASUREMENT OF PALLET
WIDTH* LONG X HEIGHT
42 X 48 X 5 1/2'

MANGO SLAPS 10 PCS

ACIDULATED SOFT CANDY LOLLIPOP



NUTRITION FACTS

Net Weight:	3.33 oz	Sodium:	0
Serving:	10 per container	Potassium:	0
Calories:	30	Carbohydrate:	8 g
Calories from Fat:	0	Dietary Fiber:	0
Total Fat:	0	Sugars:	8 g
Saturated Fat:	0	Protein:	0
Polyunsaturated:	0	Vitamin A:	0
Monounsaturated:	0	Vitamin C:	0
Trans Fat:	0	Calcium:	0
Cholesterol:	0	Iron:	0

INGREDIENTS

Sugar, corn syrup, iodized salt, citric acid, malic acid, chili, artificial flavors and colors (fd&c yellow #5), titanium dioxide.

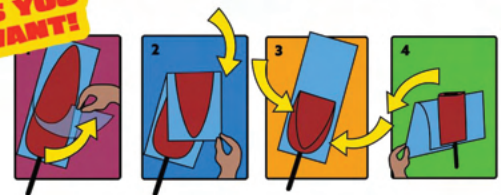
Azúcar, glucosa, sal yodatada, ácido cítrico, ácido málico, chile, saborizantes y colorantes artificiales (*tartrazina [en E.U.A. amarillo #5]), dióxido de titanio.

dulces-pigui.com
 Doroteo Hernandez
 3215 N Alameda St.
 Suite F Compton, CA 90222

PHONE/TEL:
 (310) 886-7884
 doro_dulcespigui@yahoo.com
 info@dulces-pigui.com



FOLD IT AS YOU WANT!



SHIPPING SPECIFICATION

UNIT OF MEASUREMENT	UPC OF BOX	CONTENT	UPC OF PACKAGE
BOX	6 40793048751	40 PKGS / 10 PCS	6 40793048713
DISPLAY WEIGHT		WEIGHT OF BOX	
3.33 OZ (95 G)		9.5 LBS	
BOXES IN PALLET	LAYERS	EACH LAYER	LBS OF PALLET
156	12	13	1,624 LBS



BOX MEASURE
 LONG* WIDTH* HEIGHT
 13 5/8 " - 9 1/4 " - 4 1/8 "



MEASUREMENT OF PALLET
 WIDTH* LONG X HEIGHT
 42 X 48 X 5 1/2'

JUMBO SLAPS 25 PCS

ACIDULATED SOFT CANDY LOLLIPOP



NUTRITION FACTS

Net Weight:	15.8 oz	Sodium:	0
Serving:	25 per container	Potassium:	0
Calories:	60	Carbohydrate:	15 g
Calories from Fat:	0	Dietary Fiber:	0
Total Fat:	0	Sugars:	15 g
Saturated Fat:	0	Protein:	0
Polyunsaturated:	0	Vitamin A:	0
Monounsaturated:	0	Vitamin C:	0
Trans Fat:	0	Calcium:	0
Cholesterol:	0	Iron:	0

INGREDIENTS

Sugar, corn syrup, chili, iodized salt, citric acid, artificial flavors and colors (fd&c blue #1, fd&c red #40, fd&c yellow #5), titanium dioxide.

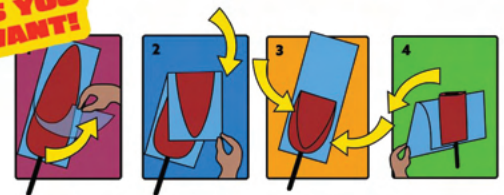
Azúcar, glucosa, chile, sal yodatada, ácido cítrico, sabores y colorantes artificiales (rojo allura ac [en E.U.A. rojo #40], *tartrazina, [en E.U.A. amarillo #5], azul brillante fcf [en E.U.A. azul #1]), dióxido de titanio.

dulces-pigui.com
Doroteo Hernandez
3215 N Alameda St.
Suite F Compton, CA 90222

PHONE/TEL:
(310) 886-7884
doro_dulcespigui@yahoo.com
info@dulces-pigui.com



FOLD IT AS YOU WANT!



SHIPPING SPECIFICATION

UNIT OF MEASUREMENT	UPC OF BOX	CONTENT	UPC OF PACKAGE
BOX	6 40793048874	30 PKGS / 25 PCS	6 40793048843

DISPLAY WEIGHT	WEIGHT OF BOX
15.8 OZ (450 G)	33 LBS

BOXES IN PALLET	LAYERS	EACH LAYER	LBS OF PALLET
56	7	8	1,888 LBS



BOX MEASURE
LONG* WIDTH* HEIGHT
18" - 11 13/16" - 7 3/8"



MEASUREMENT OF PALLET
WIDTH* LONG X HEIGHT
42 x 48 x 5'

BIBI FRUTIX 12 PCS

HARD CANDY AND ACIDULATED POWDER OF FRUITS FLAVORS



NUTRITION FACTS

Net Weight:	8.46 oz	Sodium:	0 mg
Serving:	12 per container	Potassium:	0
Calories:	80	Carbohydrate:	20 g
Calories from Fat:	0	Dietary Fiber:	0
Total Fat:	0	Sugars:	18 g
Saturated Fat:	0	Protein:	0
Polyunsaturated:	0	Vitamin A:	0
Monounsaturated:	0	Vitamin C:	0
Trans Fat:	0	Calcium:	0
Cholesterol:	0	Iron:	0



INGREDIENTS

Hard candy ingredients : sugar, corn syrup, tartaric acid, artificial flavors and artificial colors (fd&c blue #1, fd&c yellow #5, fd&c red #3).

Candy powder Ingredients : sugar, dextrose, citric acid , fumaric acid, silicon dioxide, artificial flavors and colors (fd&c blue #1 lake, fd&c yellow #5 lake, fd&c red #40 lake)

Ingredientes caramelo: azúcar, glucosa, ácido tartárico, saborizantes y colorantes artificiales (azul brillante fcf [en E.U.A. azul #1], *tartrazina [en E.U.A. amarillo #5], eritrocina [en E.U.A. rojo #3])

Ingredientes polvo: azúcar, dextrosa, ácido cítrico, ácido fumárico, dióxido de silicio (antiapelmazante), saborizantes y colorantes artificiales (laca azul brillante fcf [en E.U.A. azul #1], *tartrazina [en E.U.A. amarillo #5], rojo alllura ac [en E.U.A. rojo #40]).



SHIPPING SPECIFICATION

UNIT OF MEASUREMENT	UPC OF BOX	CONTENT	UPC OF PACKAGE
BOX	1 7503008304601	12 DISPLAYS / 12 PCS	7 503008304604

DISPLAY WEIGHT	WEIGHT OF BOX
8.8 OZ	12 LBS

BOXES IN PALLET	LAYERS	EACH LAYER	LBS OF PALLET
100	10	10	1,235 LBS



BOX MEASURE
LONG* WIDTH* HEIGHT
10 1/4 " x 19 5/8 " X 8"



MEASUREMENT OF PALLET
WIDTH* LONG X HEIGHT
48* 48 X 7'

BIBI POLVIZ 12 PCS

BABY BOTTLE WITH HARD CANDY AND SPICY POWDER INSIDE



NUTRITION FACTS

Net Weight:	8.46 oz	Sodium:	310 mg
Serving:	12 per container	Potassium:	0
Calories:	80	Carbohydrate:	20 g
Calories from Fat:	0	Dietary Fiber:	0
Total Fat:	0	Sugars:	17 g
Saturated Fat:	0	Protein:	0
Polyunsaturated:	0	Vitamin A:	0
Monounsaturated:	0	Vitamin C:	0
Trans Fat:	0	Calcium:	0
Cholesterol:	0	Iron:	0



INGREDIENTS

Hard candy ingredients: Sugar, corn syrup, tartaric acid, artificial flavors and artificial colors (fd&c blue #1, fd&c yellow #5, fd&c red #3).

Candy powder ingredients: sugar, dextrose, iodized salt, chili powder, citric acid, fumaric acid, silicon dioxide, artificial flavor and artificial color (fd&c blue #1 lake, fd&c yellow #5 lake, fd&c red #40 lake).

Ingredientes caramelo: azúcar, glucosa, ácido tartárico saborizantes y colorantes artificiales (azul brillante fcf [en E.U.A. azul #1], *tartrazina [en E.U.A. amarillo #5], eritrocina [en E.U.A. rojo #3])

Ingredientes polvo: azúcar, dextrosa, sal yodatada, chile en polvo, ácido cítrico, ácido fumárico, dióxido de silicio (antiapelmazante), sabor artificial y color artificial (laca azul brillante fcf [en E.U.A. azul #1], *tartrazina [en E.U.A. amarillo #5], rojo alllura ac [en E.U.A. rojo #40])



SHIPPING SPECIFICATION

UNIT OF MEASUREMENT	UPC OF BOX	CONTENT	UPC OF PACKAGE
BOX	17503008304793	12 DISPLAYS / 12 PCS	7 503008304796
	DISPLAY WEIGHT	WEIGHT OF BOX	
	8.8 OZ	12 LBS	
BOXES IN PALLET	LAYERS	EACH LAYER	LBS OF PALLET
100	10	10	1,235 LBS



BOX MEASURE
LONG* WIDTH* HEIGHT
10 1/4 " x 19 5/8 " X 8"



MEASUREMENT OF PALLET
WIDTH* LONG X HEIGHT
48* 48 X 7'



dulces-pigui.com
3215 N Alameda St.
Suite F Compton,
CA 90222

PHONE/TEL: (310) 886-7884
doro_dulcespigui@yahoo.com
info@dulces-pigui.com

