

. 2024 .



TRADE LOOKBOOK



www.boutiquecamping.com
www.boutiquecamping.com.au
www.belltent.com

UK: +44 (0) 203 319 1315
US: +1(929) 334 3212

. WHERE WILL YOUR .



ADVENTURE

TAKE YOU...



WE MAKE
YOUR GLAMPING
SITE UNIQUE.

With 14 years experience in the glamping-game, we know that the desires and expectations of two campers or outdoor-businesses can compare...

We know how important it is to create a welcoming and relaxing campsite for your customers, but with camping and staycations on the rise, it has never been more vital that your business also stands out amongst the crowds.

Through our range of exclusive and coveted tent designs, we can provide your guests with the ultimate glamping experiences, whilst gifting you and your business with a unique reputation it truly deserves!

No matter the size, vibe or location of your site, our one-stop e-shop also boasts a selection of high quality and unique glamping accessories, cooking stoves and savvy equipment to compliment your new tents and transform your trade from basic to boutique.

*So, where will your next
business ad-venture take you?*



CLASSIC BELL TENTS



This classic design is a staple piece within the camping industry, and the most commonly desired tent in our repertoire. If your clients are looking for the most genuine, traditional and nostalgic glamping experience, this tipi-inspired structure is the way to do it! The Classic Bell Tent offers plenty of features such as air vents, netting, increased door height and a zippable groundsheet.



**AVAILABLE
IN SIZES
3M - 8M**



**DOUBLE &
QUAD DOOR
OPTIONS**



**AVAILABLE IN
5 FABRICS**



**AVAILABLE IN
4 COLOURS**



Coffee

Grey

Rainbow

Sandstone

A TIMELESS
TRADITION.





BELL TENT PLUS



Your go-to Classic Bell Tent, revolutionised with Boutique Camping's renown tangle-free arched hem and webbing strap duo, a feature most commonly recognised from our [Star Bell](#) range.

This aesthetically alluring attribute also has many practical advantages including increased stability and maximised longevity. Additionally, this 360° feature successfully redirects rainpour away from the tent's groundsheet and pairs perfectly with the integrated doorway overhang which can be extended with an [additional canopy](#).



AVAILABLE
IN SIZES
3M - 8M



AVAILABLE IN
3 FABRICS



DOUBLE
DOOR
OPTION





STUNNING FROM
ALL ANGLES.



STAR BELL TENTS



Our best-selling 'BC Exclusive' design embodying several enhanced features guaranteed to double the glam factor, triple the thrills and quadruple the practicalities of your guests' under star stays.

The integrated canopy; attached to the extra wide doorway, combined with the 360° mesh walls, allows you to camp comfortably, catching a cooling bug-free breeze and using the extended porch to store equipment and host shaded al-fresco hangouts. The globally pitched range also features robust webbing straps and roll up sides, serving multiple looks to flatter any environment.



**AVAILABLE
IN SIZES
3M - 6M**



**AVAILABLE IN
4 FABRICS**



**EMPEROR
RENDITION
AVAILABLE**



**AVAILABLE IN
2 COLOURS**





THE STAR OF THE SHOW.

@CAMPQUAIVES

@VERITAS.ISLAND

BOUTIQUE



TUCANA TENTS



A Dutch inspired structure designed to endlessly impress and effortlessly host home-away-from-home escapades in.

The Tucana Tent stands tall and boasts an ample floor-to-head space complimented with extended porch area/s to indulge in... A perfect-pitch for glamping sites who look to accommodate groups of x10 camping companions.



**DOUBLE
DOOR
OPTION**



**AVAILABLE IN
3 FABRICS**



**COMPATIBLE
WITH RV'S &
CAMPERVANS**





Home is where the van is



LUNA BELL TENTS



The renown 'canvas-castle' of the range, designed with majestic grandeur and glamping luxe in mind. A dome shaped structure that introduces head space, maximises internal space and creates a sense of all around grandiosity. This tent is perfect for large groups, family campers and even business owners looking for an unconventional place to host and flaunt their fortes from!

At the highest point, the 5m Luna Bell Tent stands at an impressive 3 meters and pairs with 1.9m high side walls, meaning...no chance of your guests leaving with a case of dreaded campers stoop!



AVAILABLE
IN SIZES
4M - 7M



AVAILABLE IN
4 FABRICS



EMPEROR
RENDITION
AVAILABLE



DOUBLE
DOOR
OPTION



*grandiose
luxury.*

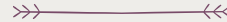




BOULIQUE



NOVA AIR DOME



A unique, fully inflatable structure designed to WOW! The Nova Air Dome is one of a kind and boasts a grand, pole-free, high walled, roomy interior. This savvy attribute means that when it comes to furnishing and dressing the interior of your canvas dome/s you'll have freedom without obstructions or compromise! For example, the 3m Nova can comfortably fit a double mattress, unlike tents that require a centre pole.

Simply peg down, pump up and watch the bookings come flooding in!



**AVAILABLE
IN SIZES
4M & 5M**



**PITCH IN JUST
10 MINUTES!**



**INCLUDES
MANUAL AIR
PUMP**



STYLISH INNOVATION.

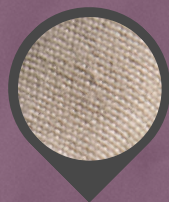


TENT FABRICS



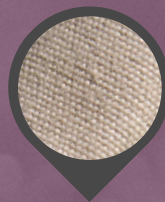
All designs are available in a diverse range of tried and tested fabrics - providing your customers with an ideal solution no matter their pitching preference or climate/conditions.

Want to get a feel, fo'real? Pop us an email to request fabric samples.



FIREPROOF COTTON 320GSM

- 100% cotton (320gsm) ✓
- BS7837:1996 certified ✓
- Treated with UV, rot and water repelling agent ✓
- Stove compatible ✓
- Optional pre-cut stove hole/flap installation ✓



COTTON 285GSM

- 100% cotton (285gsm) ✓
- Treated with UV, rot and water repelling agent ✓
- Stove compatible ✓



POLYCOTTON 200 & 285GSM

- Poly-cotton blend for faster drying and easier maintenance ✓
- Treated with UV, rot and water repelling agent ✓
- Stove compatible ✓

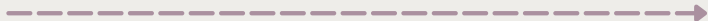


OXFORD 100 & 230GSM

- Lightweight alternative ✓
- Easy clean and maintenance ✓
- Waterproof ✓
- Available in colours and prints ✓



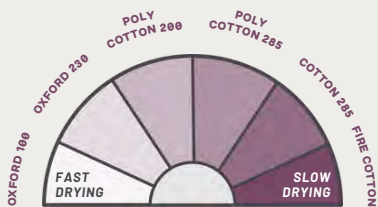
COMPARE BEFORE YOU CAMP



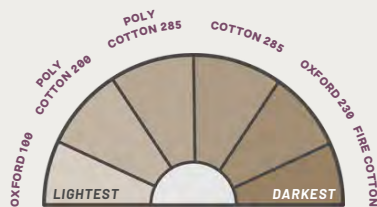
MATERIALS GUIDE	OXFORD 100	OXFORD 230	POLYCOTTON 200	POLYCOTTON 285	COTTON 285	FIRE COTTON
WATERPROOF	✓	✓	✓	✓	✓	✓
FIREPROOF	✗	✗	✗	✗	✗	✓
STOVE COMPATIBLE	✗	✗	✓	✓	✓	✓✓
PROTECTED FROM UV	✓	✓	✓	✓	✓	✓
ANTI-MOLD TREATMENT	N/A	N/A	✓	✓	✓	✓
WIND RATING	40MPH	40MPH	40MPH	40MPH	40MPH	40MPH

*N/A = Due to the synthetic fibres in Oxford fabric, naturally it is already mold resistant.

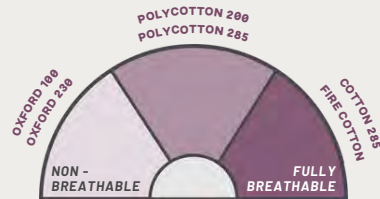
*✓✓ = Most compatible/Most recommended.



FABRIC DRYING TIME



INTERIOR DARKNESS



FABRIC BREATHABILITY

NOW IT'S TIME TO
ACCESSORISE!





MATTING



Matting is Boutique Camping's most popular and desirable add-on product. Soft on the foot and perfect for amplifying effortless inviting vibes, our matting also has many practical benefits too including protecting your groundsheet from dirt and tears, is easy to clean and also can be rolled up nice and compact, ready for when the season ends!

We have a variety of colours, textures and materials to compliment your personal interior taste.

INNER TENTS



We understand that your bookings can come with different accommodation requirements. Therefore, our range of inner tents are ideal for creating up to two private designated bedroom areas within your tent.

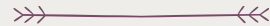
Designed to cover only half of the internal floor space, inner tents are perfect for facilitating beautiful and separated lounge areas in the open half. Our inner tents have been crafted with convenience and practicality in mind and designed to ensure easy installation via the loops constructed in our centre poles and tent walls.

Further benefits include protection against bugs, without compromising on breathability factors. Opt for white or black to compliment your interior and preferred amount of morning sunlight!





CANOPIES & AWNINGS



Looking for a quick solution to offer your customers extra space? Try combining your tents with one of our multipurpose canopies and quickly expand the living space of your tents up to twice the size!



PROTECTIVE ACCESSORIES



Love, care and occasional maintenance are fundamental to long lasting happy tents and we are keen believers that prevention is better than cure. Shop our extensive range of protective accessories that both encourage longevity and intensify the aesthetically pleasing qualities of your Boutique Camping tents.

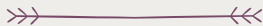
GROUND SHEET PROTECTORS

An essential item to prolong the life of your tents, they provide insulation and warmth against cold and damp grounds, keeping the base of your tent clean and dry, as well as providing protection against sharp objects on the ground. While not being a visible upgrade, these will definitely help boost the overall quality and durability of your tents.

TENT PROTECTOR COVERS

Made from our waterproof oxford fabric, these lightweight sheets protect your tent from water, UV damage, dirt and debris. They not only provide insulation and practicality, our covers come in an array of patterns and colour ways, perfect for giving your tents a little character.

STOVES & COOKING



Make the most out of your glampsite and tents' living area & amenities by offering an add-on which will allow your guests to cook their food, warm their drinks, melt their marshmallows and much more!

*Flashing kits and heat mats for safe tent installation can be purchased separately.



FIND THE PERFECT STOVE

FOR YOUR BUSINESS NEEDS & GUESTS DESIRES



	PORTABLE STOVE	PORTABLE STOVE (WITH GLASS DOOR)	GLAMPING STOVE	CLASSIC STOVE	TRADITIONAL STOVE	ORIGINAL PIZZA OVEN	PIZZA OVEN PLUS
WEIGHT	10KG	10KG	15.6KG	12KG	19KG	28KG	30KG
HEAT OUTPUT	3.5KW	3.4KW	4.5KW	3.4KW	4.5KW	9.4KW	9.4KW
TENT COMPATIBLE	✓	✓	✓	✓	✓	✓	✓
ASH TRAY	✓	✓	✓	✓	✓	✓	✓
PIZZA OVEN WITH CORDIERITE STONE	✗	✗	✗	✗	✗	✓	✓
GRILL RACK IN FIRE BOX	✗	✗	✗	✗	✗	✗	✓
COMPATIBLE WITH WATER HEATER / KETTLE	✓	✓	✗	✓	✓	✓	✓
INTEGRATED TEMPERATURE GAUGE	✗	✗	✗	✗	✗	✓	✓
LOCKING LEGS	✓	✓	✗	✗	✗	✓	✗
FLUE DAMPER FOR VENTILATION CONTROL	✓	✓	✗	✗	✗	✗	✓
GLASS WINDOW	✗	✓	✓	✓	✓	✓	✓
SIDE VIEWING GLASS	✗	✗	✗	✗	✗	✗	✓
INCLUDES FLUE (CHIMNEY)	✓	✓	✓	✓	✓	✓	✓
HOT TOP COOKING SURFACE (INCHES)	17.3" X 9.8"	17.3" X 9.8"	13.7" X 5.9"	14.3" X 9.8"	11.2" X 16.3"	15.7" X 15.7"	15.7" X 15.7"
TOP PLATE WITH DIRECT ACCESS TO FIRE BOX	✓	✓	✓	✓	✓	✗	✗
DOOR AIR INTAKE VALVE FOR COMBUSTION CONTROL	✗	✗	✓	✓	✓	✓	✓
SPARK ARRESTOR	✓	✓	✓	✓	✓	✓	✓
SIDE GRILLS	✗	✗	✗	✓	✗	✓	✓
SIDE HANDLE	✓	✓	✗	✗	✗	✗	✗

*Tent compatibility depends on fabric material and does not include non-breathable polyester tents.



WHAT WE OFFER



COLLABORATIONS

One thing more iconic than extraordinary tent designs are extraordinary tents pitched in your jaw dropping landscapes!

For impressive sites we offer FREE photoshoots, product testing, social media exposure and so much more. Get in touch if your boutique business would benefit!



DISCOUNTS

For existing and new camping customers to order larger quantities of tents, to help get your business booming and save you some pennies, we run a trade discount scheme every year, usually for 2-3 months starting in Sep/Oct.



FINANCE

If you have an enquiry regarding bespoke financing options, please get in contact with us directly, we will be happy to walk you through the process and help you make the best decision based on your needs and glamping goals.



AFTER CARE

To us, you are our VIP, and it's in our DNA to ensure our relationship doesn't end at checkout point. Our customer care team are here to support you with everything from setting up, maintenance, additional orders and much more!



FINANCE OPTIONS AVAILABLE

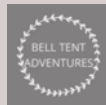




SOME OF OUR CUSTOMERS AROUND THE WORLD



BEDOUIN



CARBON NEUTRALITY

our journey

MAKING EVERYDAY, EARTH DAY.

CARBON
NEUTRAL
WORKFORCE

CARBON
NEUTRAL
OFFICE

CARBON
NEUTRAL
WAREHOUSE *and*
LOGISTICS

CARBON
NEUTRAL
IMPORTED
FREIGHT

and
TREE PLANTING

WE WILL PLANT A TREE
WITH ANY ORDER OVER THE
VALUE OF £300!

*'Loving the grounds we
pitch on, since 2010.'*



LET'S CONNECT!



[@WEAREBOUTIQUE](#)



[@BOUTIQUECAMPING](#)



[@WEAREBOUTIQUE](#)



[@BOUTIQUECAMPING](#)



[BOUTIQUE-CAMPING](#)



[BOUTIQUECAMPING](#)

