

BEFORE

NATURAL LEVEL: 2
% GREY/WHITE: 0
TEXTURE: AVERAGE
POROSITY: NORMAL



PRODUCTS USED:

PROFESSIONAL:

- ALOXXI ULTRA LIGHTENER
- ALOXXI 20 VOL. DEVELOPER
- ALOXXI 7 VOL. CREME ACTIVATOR
- TONES 8K + 9G + V GEM
- TONES 9G + G GEM
- TONES 9G + 6XR + G GEM
- ULTRA HOT NEON GREEN, GREEN & RED

RETAIL:

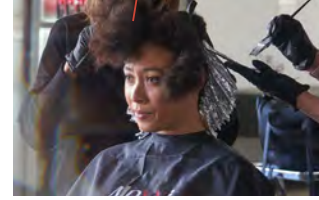
- ALOXXI ESSENTIAL 7 OIL SHAMPOO
- ALOXXI ESSENTIAL 7 OIL TREATMENT CONDITIONER
- ALOXXI ESSENTIAL 7 SERUM
- ALOXXI WORKING HAIRSPRAY
- ALOXXI BOMBSHELL VOLUMIZING GRIP STYLER

STEP 1



Begin in that back- take back-to-back slices and apply **FORMULA 1** (Aloxxi **ULTRA LIGHTENER** with **20 Vol. Developer** (1:2), ½ inch off the scalp.

STEP 2



Continue working through the back until the crown of the head.

STEP 3



Move to the sides and continue in the same manner from the side perimeter to the top of the head until all hair is encased in foil.

STEP 4



Lighten to gold/yellow, then apply a fresh mixture of Aloxxi **ULTRA LIGHTENER** with **20 Vol. Developer** (1:2) to the base (sliding foils slightly) and allow to lighten to a yellow. Remove foils, rinse well and apply **COLOURLOCK Post-Color Finisher** for 2-3 minutes.

STEP 5



At the basin, apply Aloxxi Violet Shampoo for 3-5 minutes to pre-tone, then rinse and dry.

STEP 6



A global base application was applied to all hair except a triangular section behind the left ear utilizing **TONES 8K + 9G + V Gem** with **7 Vol. Creme Activator** (1:2)

STEP 7



Take organic, large & purposeful triangular sections, and apply to the mid-lengths and ends alternating Formulas 2, 3 & 4. Placement of the formulas is visual.

FORMULA 2: TONES 8K + 9G + V Gem with 7 Vol. Creme Activator (1:2)

FORMULA 3: TONES 9G + G Gem with 7 Vol. Creme Activator (1:2)

FORMULA 4: TONES 9G + 6XR + G Gem with 7 Vol. Creme Activator (1:2)

STEP 8



Apply **ULTRA HOT Neon Green, Green & Red** to a triangular section behind the ear.

STEP 9



Allow to develop for 20 minutes, then rinse well and finish with **COLOURLOCK Post-Color Finisher** for 2-3 minutes.

COLOR TECHNICAL