

## BEFORE

**NATURAL LEVEL:** Base level 7, mid-length & ends previously lightened to level 10  
**% GREY/WHITE:** 0  
**TEXTURE:** FINE  
**POROSITY:** POROUS



## PRODUCTS USED:

### PROFESSIONAL:

- ALOXXI WHITE LIGHTENER
- ALOXXI H<sub>2</sub>O<sub>2</sub> DEVELOPER 20 VOL. BLUE
- ULTRA HOT PINK, YELLOW, VIOLET & CLEAR
- TONES 9G & G GEM; 10A, 9AA, 9V
- ALOXXI H<sub>2</sub>O<sub>2</sub> CREME ACTIVATOR 7 VOL.
- COLOURPRIME PRE-COLOR TREATMENT
- COLOURLOCK POST-COLOR FINISHER

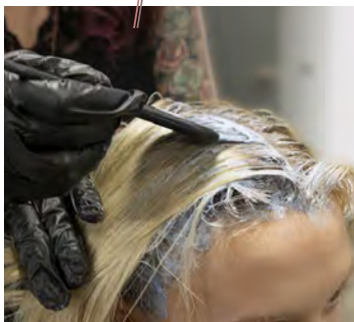
### RETAIL:

- ALOXXI REPARATIVE SHAMPOO
- ALOXXI REPARATIVE TREATMENT MASQUE
- ALOXXI SPLIT ENDS MEND
- ALOXXI VOLUMIZING WHIP

*ELECTRIC CONNECTION* (WARM COLOR RESULT) STEPS 1,2,4  
*BLONDE UNITY* (COOL COLOR RESULT) STEPS 1,3,4

# COLOR TECHNICAL

## STEP 1



Pre-lighten regrowth to create even canvas  
 1 pt Aloxxi **White LIGHTENER**  
 2 pts Aloxxi **20 Vol. Blue Developer**  
 Rinse well, apply **COLOURLOCK Post-Color Finisher** for 2-3 mins. Dry hair.

## STEP 2



Work a patchwork pattern, starting at the bottom, work to the top of the head separating with foils.

The warm side of the head was applied 1st, alternating

### FORMULA 1:

ULTRA HOT Pink, Yellow & Violet

### FORMULA 2:

ULTRA HOT Yellow & Clear

### FORMULA 3:

TONES 9G & G Gem with H<sub>2</sub>O<sub>2</sub> Creme Activator 7 Vol. (2%) (1:2)

## STEP 3



Continue working in the same manner on the cool side, alternating formulas 4, 5 & 6.

### FORMULA 4:

TONES 10A with H<sub>2</sub>O<sub>2</sub> Creme Activator 7 Vol. (2%) (1:2)

### FORMULA 5:

TONES 9AA with H<sub>2</sub>O<sub>2</sub> Creme Activator 7 Vol. (2%) (1:2)

### FORMULA 6:

TONES 9V with H<sub>2</sub>O<sub>2</sub> Creme Activator 7 Vol. (2%) (1:2)

## STEP 4



The color was left to develop for 20 minutes, upon completion of the application, rinsed and **COLOURLOCK Post-Color Finisher** was applied for 2-3 minutes.