

# PINWHEEL REVEAL

## COLOR TECHNIQUE

Color Personality: ROSE-SINI

Natural Level: 6

Texture: Fine

Porosity: Normal

Pre-lighten to light yellow stage with an Aloxxi LIGHTENER

Formula **A**: TONES 10g CLEAR + 2g 6RK mixed 1:1 with 7 Vol. Activator

Formula **B**: TONES 20g CLEAR + 2g Red GEM + 2g Copper GEM mixed 1:2 with 7 Vol. Activator

Formula **C**: TONES 20g CLEAR + 2g Red GEM + 3g Copper GEM + 1g Violet GEM mixed 1:2 with 7 Vol. Activator

Formula **D**: TONES 15g 10V + 5g Violet GEM + 5g CLEAR mixed 1:1 with 7 Vol. Activator



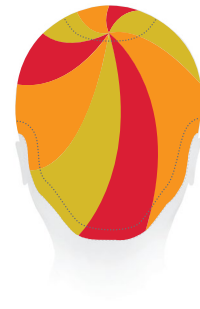
Step 1

Apply ColourPrime Pre-Color Treatment on pre-lightened hair.



Step 2

Create a pinwheel with 9 sections starting at the crown and a crescent shape in the fringe.



Step 3

Rotate application of Formulas A, B & C around the pinwheel.



Step 4

Apply Formula D to the crescent in the fringe.



Step 5

Develop then rinse thoroughly and apply ColourLock Post-Color Finisher.