

# VINTAGE ROSES

Designed by Darlene Zimmerman  
[www.feedsacklady.com](http://www.feedsacklady.com)

Featu

*Darlene Zimmerman*  
**COUNTRY MANOR**



Finished quilt measures: 68" x 82"

**Pattern Level: Experienced Intermediate**

*"I know the ropes and would like to test my skills!"*

**ROBERT KAUFMAN**  
F A B R I C S

For questions about this pattern, please email [Patterns@RobertKaufman.com](mailto:Patterns@RobertKaufman.com).







## Fabric and Supplies Needed

*Fabric amounts based on yardage that is 42" wide.*

Color	Fabric	Name/SKU	Yardage	Color	Fabric	Name/SKU	Yardage
		CR-135-20 ANTIQUE COLORSTORY	one charm roll			ADZ-16267-97 ROSE	
<b>Containing the following prints:</b>						ADZ-16266-199 ANTIQUE	
		DZ-16265-84 CREAM				ADZ-16271-97 ROSE	
		ADZ-16271-34 SAGE				ADZ-16269-170 SIENNA	
		ADZ-16270-84 CREAM				ADZ-16272-199 ANTIQUE	
		ADZ-16269-97 ROSE				ADZ-16269-84 CREAM	
		ADZ-16272-84 CREAM				ADZ-16270-199 ANTIQUE	
		ADZ-16268-199 ANTIQUE				ADZ-16267-199 ANTIQUE	
		ADZ-16269-49 OLIVE				ADZ-16265-199 ANTIQUE	
		ADZ-16266-84 CREAM					

## Fabric and Supplies Needed

*Fabric amounts based on yardage that is 42" wide.*

Color	Fabric	Name/SKU	Yardage	Color	Fabric	Name/SKU	Yardage
	A	ADZ-16269-84 CREAM	1-1/8 yard		D	ADZ-16267-199 ANTIQUE	1-1/8 yard
	B	ADZ-16269-97 ROSE	1/2 yard		E	ADZ-16270-84 CREAM	1 yard
	C	ADZ-16267-97 ROSE <i>*includes binding</i>	1-1/3 yard		F	ADZ-16265-199 ANTIQUE	2-1/8 yards
<p>Copyright 2016, Robert Kaufman For individual use only - Not for resale</p>				<p>You will also need: 5 yards (OR 2-1/8 yards of wide backing) Companion Angle (EZ Quilting #882670139A) Easy Angle (EZ Quilting #8823759A) Easy Scallop (EZ Scallop #8823754A) optional</p>			

## Notes Before You Begin

- Read through all of the instructions before beginning.
- All of the seam allowances are 1/4" unless otherwise noted.
- Press seam allowances open unless otherwise noted.
- Width of fabric (WOF) is equal to at least 42" wide.
- Right sides together has been abbreviated to RST.
- Remember to measure twice and cut once!

## Cutting Instructions

### From the Charm Roll, cut:

three large dark floral strips into a total of:  
twenty 4-1/2" squares

Gather ten print strips (without using prints that match Fabrics A, C and D) and cut each in half to yield two 5" x 21" strips, each.

Gather one half-strip of each fabric from the previous step. Trim to 4-1/2" x 21" and cut eight Easy Angle triangles from each of the ten fabrics.





Gather the remaining ten half-strips. Cut in half lengthwise to make two 2-1/2" x 21" strips. From these 2-1/2" strips, cut eight Companion Angle triangles from each fabric.

**From Fabric A, cut:**

thirteen 2-1/2" x WOF strips. Subcut:  
 eighty Companion Angle triangles  
 one hundred sixty Easy Angle triangles

**From Fabric B, cut:**

five 2-1/2" x WOF strips. Subcut:  
 eighty 2-1/2" squares

**From Fabric C, cut:**

one 2-1/2" x WOF strips. Subcut:  
 twelve 2-1/2" cornerstone squares  
 seven 2-1/2" x WOF strips. Sew together, end-to-end, and set aside for the inner border.  
 eight 2-1/2" x WOF strips. Set aside for binding.

**From Fabric D, cut:**

thirteen 2-1/2" x WOF strips. Subcut:  
 one hundred sixty Companion Angle triangles

**From Fabric E, cut:**

eleven 2-1/2" x WOF strips. Subcut:  
 thirty-one 2-1/2" x 12-1/2" sashing strips

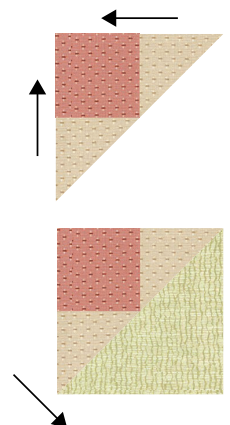
**From Fabric F, cut:**

four 5-1/2" x **length of fabric** strips. Set aside for outer border.

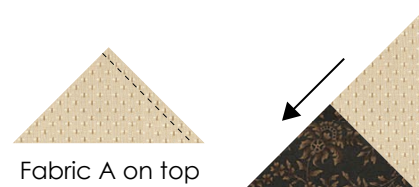
## Assembling the Blocks

**Step 1** Sew all the Fabric A Easy Angle triangles to adjacent sides of a Fabric B square as shown. Press toward the squares. Make eighty units.

**Step 2** Sew all the large Easy Angle print triangles to the Step 1 units. Press toward the print triangles. At this point the units should measure 4-1/2" square.



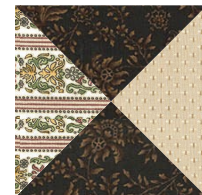
**Step 3** Sew all the Fabric A Companion Angle triangles together with the dark brown triangles *exactly as shown*. Press toward the dark brown triangles.



**Step 4** Sew all the print triangles together with the dark brown triangles *exactly as shown*. Press toward the dark brown triangles.



**Step 5** Sew the Step 3 and 4 triangles together, matching and pinning the center seam intersection. Twist the center to pop a few threads so the seam allowances spin around the center. OR, press the seam open. At this point the units should measure 4-1/2" square. Make eighty units.



**Step 6** All the units for the blocks have been assembled. You can arrange the various units as you choose to make twenty different blocks. The block is a nine-patch. Assemble as shown here:



## Assembling the Quilt

**Step 7** Arrange the blocks in five rows of four blocks. Place the striped sashing fabric between the blocks. Sew the rows together with the sashing. Press toward the sashing. Make five rows of blocks.



**Step 8** Sew 4 sashing strips and 3 cornerstones together into 4 horizontal sashing strips. Press toward the sashing.





**Step 9** Sew the block rows from Step 7 and the sashing rows from Step 8 together to complete the quilt top. Press the seams toward the sashing.



## Attaching the Borders

**Step 10** Measure the length of the quilt top. Piece, then trim two inner borders to this length. Sew to the sides of the quilt. Press toward the borders.

**Step 11** Repeat this procedure for the top and bottom inner borders.

**Step 12** Repeat Steps 10 and 11 for the wider outer borders.

Your quilt top is finished! Baste, quilt, bind and enjoy!