



Generic Testosterone Gel Cost - Where Can I Buy Testosterone Gel

AndroGel is synthetic testosterone mixed into a gel with alcohol that is applied to the skin once The testosterone is absorbed into the skin for continuous 24-hour delivery into the The medication can cost as much as \$500 a month, but some insurance companies cover The drug is available in two strengths: 1 percent and 62

🕒 Injectables AAS / Oral AAS / HGH / Weight Loss / Peptides / Post Cycle Therapy

🔒 High Quality / Secured Payment / Guaranteed Confidentiality / Private Data Protection

🌟 Customer support / International shipping / Secure & private

🛒 SHOP NOW ONLINE: <https://t.co/FmJZPuzocq>

The cheapest option is injections, and these can cost between \$40-\$100 per Gels, creams, and patches (including intranasal and oral medication) are likely to set you back around \$200 - \$500 a The most expensive option, pellets, will cost you about \$500 a

Where To Buy Testosterone Gel

Full Disclosure Ingredient Panel		
DIRECTIONS: (Adult) Take three (3) Liquid Soft-Gels daily with a meal and a full glass (8oz) of water.		
Supplement Facts		
Serving Size: 3 Liquid Soft-Gels		
Servings per Container: 20		
	Amount per Serving	% Daily Value
Zinc (as Zinc Methionine) OptiZinc®	30 mg	273%
Copper (as Copper Citrate)	2 mg	222%
Fish Oil (18% EPA (icosapentaenoic acid), 108 mg, 12% DHA (docosahexaenoic acid), 72 mg)	600 mg	†
Pumpkin Oil (seed)	525 mg	†
Full-Spectrum Hemp extract blend	353 mg	†
CBD (naturally occurring)	30 mg	†
Beta Sitosterol 40%	300 mg	†
Stinging Nettle extract (4:1)(root)	300 mg	†
Tribulus extract (10:1)(fruit)	300 mg	†
L1100® Tongkat Ali (Eurycoma longifolia) extract (40% glycosaponins, 40 mg and 22% euryseptides, 22 mg)(root)	100 mg	†
BioPerine Complex	6 mg	†
BioPerine® Black Pepper extract (95% piperine)(fruit), Ginger extract (5% gingerols)(rhizome)		
†Daily Value not established		
Other Ingredients: Medium chain triglyceride oil, gelatin, purified water, glycerin, beeswax, soy lecithin, annatto (color), titanium dioxide (color) and maltodextrin.		
Contains: Fish (anchovy, sardine), Soy, Tree Nuts (coconut, palm kernel)		
#BIOPERINE is a registered trademark of Sabinsa Corporation.		
OptiZinc is a registered trademark of InterHealth Nutraceuticals, Inc.		
L1100® is a registered trademark of RP Ingredients.		
No preservatives added.		
Usage Warnings: Do not use if safety seal is broken. This product contains ingredients that may affect blood pressure, heart conditions and/or blood sugar. Check with your doctor before using this product and engaging in activity, if you are using medication or have any medical conditions, including heart disease or high/low blood pressure. Do not exceed 90 days of continuous use of this product without a two (2) week break. Do not use if you may become pregnant, are pregnant or nursing. Do not exceed recommended daily intake. Not intended for use by persons under 18. KEEP OUT OF REACH OF CHILDREN. Store in a cool, dry place.		

Testosterone gel is for transdermal use and thus, needs to be applied on the shoulders and or upper/ Each 5g tube of Testosterone gel contains 50mg of The usual dose is application of one tube of gel every Some may require a higher dose and thus are required to apply two tubes every

Drug prices and trends for TESTOSTERONE

Full Disclosure Ingredient Panel		
DIRECTIONS: (Adult) Take three (3) Liquid Soft-Gels daily with a meal and a full glass (8oz) of water.		
Supplement Facts		
Serving Size: 3 Liquid Soft-Gels		
Servings per Container: 20		
	Amount per Serving	% Daily Value
Calories	35	
Total Fat	2 g	3%**
Saturated Fat	1 g	5%**
Protein	1 g	
Zinc (as Zinc Methionine) OptiZinc®	30 mg	273%
Copper (as Copper Citrate)	2 mg	222%
Medium Chain Triglyceride (MCT) Oil	900 mg	†
Pumpkin Seed Oil (seed)	900 mg	†
Nettle (<i>Urtica dioica</i>) extract (4:1)(root)	300 mg	†
Plant Sterols (22% beta sitosterol, 33 mg)	150 mg	†
Asian Ginseng extract (root)	100 mg	†
LJ100® Tongkat Ali (Long Jack) (<i>Eurycoma longifolia</i>) extract (40% glycosaponins, 40 mg and 22% eurypeptides, 22 mg)(root)	100 mg	†
Chrysin	99 mg	†
Gamma Oryzanol	50 mg	†
BioPerine Complex	6 mg	†
BioPerine® Black Pepper extract (95% piperine)(fruit), Ginger extract (5% gingerols)(rhizome)		
***Daily Value based on a 2,000 calorie diet		
†Daily Value not established		
Other Ingredients: Gelatin, purified water, glycerin, soy lecithin, caramel (color), annatto (color), titanium dioxide (color), St. John's bread (carob)(color), silicon dioxide, turmeric (color) and maltodextrin.		
Contains: Soy, Tree Nuts (coconut, palm kernel)		
®BIOPERINE® is a registered trademark of Sabinsa Corporation		
LJ100® is a registered trademark of HP Ingredients		
OptiZinc® is a registered trademark of InterHealth Nutraceuticals, Inc.		
No preservatives added.		
Usage Warnings: Do not use if safety seal is broken. This product contains an ingredient that may affect blood sugar. Check with your doctor before using this product and engaging in activity, if you are using medication or have any medical conditions, including heart disease or high/low blood pressure. Do not exceed 90 days of continuous use of this product without a two (2) week break. Do not use if you may become pregnant, are pregnant or nursing. Do not exceed recommended daily intake. Not intended for use by persons under 18. KEEP OUT OF REACH OF CHILDREN. Store in a cool, dry place.		

***This product's label has been updated to add New Nutrition Labeling, but the formula has not changed. Customers may still receive product with the original label after 1/1/2020.

Branded and Generic drug prices for TESTOSTERONE Contact See Plans and Remove trial restrictions Start for \$ Serving leading biopharmaceutical companies globally: TESTOSTERONE62% GEL PUMP: 16714-0967-01:68529: GM: 2021-06-23 >Drug Name >NDC >Price/Unit (\$) >Unit

Testosterone Replacement Therapy Explained - GoodRx

Full Disclosure Ingredient Panel		
DIRECTIONS: (Adult) For daily maintenance, take four (4) Liquid Soft-Gels per day in divided doses, with meals and a full glass (8oz) of water. For a more immediate response, take four (4) Liquid Soft-Gels one hour before activity. Do not take more than four (4) Liquid Soft-Gels in one day.		
Supplement Facts		
Serving Size: 4 Liquid Soft-Gels		
Servings per Container: 15		
	Amount per Serving	%Daily Value
Calories	45	
Total Fat	2.5 g	3%**
Saturated Fat	2.5 g	12%**
Total Carbohydrates	1 g	<1%**
Protein	4 g	
Medium Chain Triglyceride (MCT) Oil	2400 mg	†
L-Citrulline	1500 mg	†
Fenugreek extract (4:1)(seed)	200 mg	†
Ginkgo (<i>Ginkgo biloba</i>) extract (leaf)	120 mg	†
Beet powder (root)	100 mg	†
LJ100® Tongkat Ali (<i>Eurycoma longifolia</i>) extract (40% glycosaponins, 40 mg and 22% eurypeptides, 22 mg)(root)	100 mg	†
Cayenne powder (30,000 HU)(fruit)	60 mg	†
Beta Sitosterol	33 mg	†
Asian Ginseng extract (4% ginsenosides, 1.2 mg)(root)	30 mg	†
BioPerine Complex BioPerine® Black Pepper extract (95% piperine)(fruit), Ginger extract (5% gingerols)(rhizome)	6 mg	†
**% Daily Value based on a 2,000 calorie diet		
†Daily Value not established		
Other Ingredients: Gelatin, purified water, glycerin, annatto (color), soy lecithin, beeswax, silicon dioxide, titanium dioxide (color) and maltodextrin.		
Contains: Soy, Tree Nuts (coconut, palm kernel)		
BioPERINE® is a registered trademark of Sabinsa Corporation.		
LJ100® is the registered trademark of HP Ingredients.		
No preservatives added.		
Usage Warnings: Do not use if safety seal is broken. This product contains an ingredient that may affect blood sugar. Check with your doctor before using this product and engaging in activity, if you are using medication, including anti-coagulants (blood thinners), or have any medical conditions, including heart disease and/or high blood pressure. Individuals with low blood pressure should not take this product. Do not use if you may become pregnant, are pregnant or nursing. Do not exceed recommended daily intake. Not intended for use by persons under 18. KEEP OUT OF REACH OF CHILDREN. Store in a cool, dry place.		

Androderm patches and all gel options run about \$550-\$600 per month or per prescription (for 30 patches or one container of gel) Testosterone shots are significantly less expensive, with generic

versions sometimes available for as little as \$20 per Was this page helpful? thumb_up_outlined thumb_down_outlined Subscribe and

Testosterone Gel: Indications, Side Effects, Warnings

Full Disclosure Ingredient Panel

DIRECTIONS: (Adult) For daily maintenance, take four (4) Liquid Soft-Gels per day in divided doses, with meals and a full glass (8oz) of water. For a more immediate response, take four (4) Liquid Soft-Gels one hour before activity. Do not take more than four (4) Liquid Soft-Gels in one day.

Supplement Facts

Serving Size: 4 Liquid Soft-Gels
Servings per Container: 17

	Amount per Serving	%Daily Value
Calories	45	
Total Fat	2.5 g	3%**
Saturated Fat	2.5 g	12%**
Total Carbohydrates	1 g	<1%**
Protein	4 g	
Medium Chain Triglyceride (MCT) Oil	2400 mg	†
L-Citrulline	1500 mg	†
Fenugreek extract (4:1)(seed)	200 mg	†
Plant Sterols (22% beta sitosterol, 33 mg)	150 mg	†
Ginkgo extract (leaf)	120 mg	†
Beet powder (root)	100 mg	†
LJ100® Tongkat Ali (<i>Eurycoma longifolia</i>) extract (40% glycosaponins, 40 mg and 22% eurypeptides, 22 mg)(root)	100 mg	†
Cayenne powder (30,000 HU)(fruit)	60 mg	†
Asian Ginseng extract (4% ginsenosides, 1.2 mg)(root)	30 mg	†
BioPerine Complex BioPerine® Black Pepper extract (95% piperine)(fruit), Ginger extract (5% gingerols)(rhizome)	6 mg	†

**% Daily Value based on a 2,000 calorie diet
†Daily Value not established

Other Ingredients: Gelatin, purified water, glycerin, annatto (color), soy lecithin, beeswax, silicon dioxide, titanium dioxide (color) and maltodextrin.

Contains: Soy, Tree Nuts (coconut, palm kernel)
 Ⓢ BIOPERINE® is a registered trademark of Sabinsa Corporation.
 LJ100® is the registered trademark of HP Ingredients.
No preservatives added.

Usage Warnings: Do not use if safety seal is broken. This product contains an ingredient that may affect blood sugar. Check with your doctor before using this product and engaging in activity, if you are using medication, including anti-coagulants (blood thinners), or have any medical conditions, including heart disease, high blood pressure or other medical conditions. Individuals with low blood pressure should not take this product. Do not use if you may become pregnant, are pregnant or nursing. Do not exceed recommended daily intake. Not intended for use by persons under 18. **KEEP OUT OF REACH OF CHILDREN.** Store in a cool, dry place.

Call your doctor right away if you have signs of high calcium levels like weakness, confusion, feeling

tired, headache, upset stomach or throwing up, constipation, or bone If you are 65 or older, use testosterone gel with You could have more side

Generic Fortesta Availability

Full Disclosure Ingredient Panel		
DIRECTIONS: (Adult) For daily maintenance, take four (4) Liquid Soft-Gels per day in divided doses, with meals and a full glass (8oz) of water. For a more immediate response prior to intimacy, take four (4) Liquid Soft-Gels one hour before activity. Do not take more than four (4) Liquid Soft-Gels in one day.		
Supplement Facts		
Serving Size: 4 Liquid Soft-Gels		
Servings per Container: 18		
	Amount per Serving	%Daily Value
Calories	40	
Total Fat	2.5 g	3%**
Saturated Fat	2 g	10%**
Total Carbohydrates	2 g	<1%**
Protein	2 g	
Medium Chain Triglyceride (MCT) Oil	2100 mg	†
KSM-66® Ashwagandha extract (5% withanolides, 33.75 mg/root)	675 mg	†
Maca powder (root)	240 mg	†
Fenugreek extract (4:1)(seed)	200 mg	†
Plant Sterols (22% beta sitosterol, 33 mg)	150 mg	†
Horny Goat Weed (<i>Epimedium sagittatum</i>) extract (10% icarins, 15 mg)(aerial)	150 mg	†
Multra Puama extract (4:1)(bark)	100 mg	†
Asian Ginseng extract (4% ginsenosides, 3.2 mg/root)	80 mg	†
Cayenne powder (30,000HU)(fruit)	60 mg	†
BioPerine Complex	6 mg	†
BioPerine® Black Pepper extract (95% piperine)(fruit),		
Ginger extract (5% gingerols)(rhizome)		
**% Daily Value based on a 2,000 calorie diet		
†Daily Value not established		
Other Ingredients: Gelatin, purified water, glycerin, beeswax, soy lecithin, caramel (color), annatto (color), St. John's bread (carob)(color), silicon dioxide, titanium dioxide (color) and maltodextrin.		
Contains: Dairy, Soy, Tree Nuts (coconut, palm kernel)		
® BIOPERINE® is a registered trademark of Sabinsa Corporation.		
KSM-66® is a registered trademark of Isoreal BioMed Inc.		
No preservatives added.		
Usage Warnings: Do not use if safety seal is broken. This product contains an ingredient that may affect blood sugar. Check with your doctor before using this product if you are using medication or have any medical conditions. Do not use if you may become pregnant, are pregnant or nursing. Do not exceed recommended daily intake. Not intended for use by persons under 18. KEEP OUT OF REACH OF CHILDREN. Store in a cool, dry place.		

***This product's label has been updated to add New Nutrition Labeling, but the formula has not changed. Customers may still receive product with the original label after 1/1/2020.

testosterone gel, metered; Manufacturer: ACTAVIS LABS UT Approval date: August 5, Strength (s): 10MG/5GM ACTUATION [AB] Note: Fraudulent online pharmacies may attempt to sell an illegal generic version of These medications may be counterfeit and potentially If you purchase medications online, be

Testosterone Gel - FDA prescribing information, side effects and uses

Full Disclosure Ingredient Panel
DIRECTIONS: (Adult) Take two (2) Liquid Soft-Gels twice daily with meals and a full glass (8oz) of water. If caffeine keeps you up at night, do not take this product in the evening since it contains natural caffeine.

Supplement Facts
 Serving Size: 2 Liquid Soft-Gels
 Servings per Container: 30

	Amount per Serving	% Daily Value
Calories	20	
Total Fat	1.5 g	2%**
Saturated Fat	0.5 g	3%**
Total Carbohydrates	1 g	<1%**
Protein	1 g	
Vitamin D3 (as Cholecalciferol)	25 mcg (1000 IU)	125%
Niacin (as Niacinamide)	22.5 mg	141%
Vitamin B6 (as Pyridoxine Hydrochloride)	10 mg	588%
Zinc (as Zinc Citrate)	7.5 mg	68%
Chromium (as Chromium Picolinate)	100 mcg	286%
Flaxseed Oil (seed)	950 mg	†
Medium Chain Triglyceride (MCT) Oil	500 mg	†
KSM-66® Ashwagandha extract (5% withanolides, 16.875 mg)(root)	337.5 mg	†
Green Tea extract (98% polyphenols, 264.6 mg, 50% EGCG, 135 mg)(leaf)	270 mg	†
Caffeine (from Coffee Bean) (<i>Coffea arabica</i>) (bean)	75 mg	†
Cinnamon (<i>Cinnamomum zeylanicum</i>) extract (5:1)(bark)	50 mg	†
Shilajit (<i>Asphaltum punjabinum</i>) extract (6:1)(rock exudate)	50 mg	†
Cayenne powder (30,000 HU)(fruit)	30 mg	†
Cordyceps (<i>Cordyceps sinensis</i>) extract (7% cordycepic acid, 1.75 mg)(fungi)	25 mg	†
Stinging Nettle extract (15:1)(root)	25 mg	†
Boron (as Boron Chelate)	5 mg	†
BioPerine Complex	3 mg	†
Bioperine® Black Pepper extract (95% piperine)(fruit),		
Ginger extract (5% gingerols)(rhizome)		

**% Daily Value based on a 2,000 calorie diet
 †Daily Value not established

Other Ingredients: Gelatin, purified water, glycerin, beeswax, soy lecithin, annatto (color), dextrin, titanium dioxide (color), St. John's bread (carob)(color), silicon dioxide, turmeric (color) and maltodextrin.
 Contains: Dairy, Soy, Tree Nuts (coconut, palm kernel)
 #BIOPERINE is a registered trademark of Sabinsa Corporation
 KSM-66® is a registered trademark of Inoval BioMed Inc.

No preservatives added.

Usage Warnings: Do not use if safety seal is broken. This product contains ingredients that may affect blood sugar. Check with your doctor before using this product if you are using medication or have any medical conditions, including, but not limited to, heart disease, high blood pressure, an iron deficiency, a liver disorder or develop symptoms of liver trouble (such as abdominal pain, dark urine or jaundice). It is recommended to limit additional caffeine intake while using this product. Do not use if you may become pregnant, are pregnant or nursing. Do not exceed recommended daily intake. Not intended for use by persons under 18. **KEEP OUT OF REACH OF CHILDREN.** Store in a cool, dry place.

***This product's label has been updated to add New Nutrition Labeling, but the formula has not changed. Customers may still receive product with the original label after 1/1/2020.

The average (\pm SD) daily testosterone concentration produced by Testosterone Gel, 1% 100 mg on Day 30 was 792 (\pm 294) ng/dL and by Testosterone Gel, 1% 50 mg 566 (\pm 262) ng/ Figure 1 : Mean (\pm SD)

Steady-State Serum Testosterone Concentrations on Day 30 in Patients Applying Testosterone Gel, 1%
Once Daily

2022 Testosterone Gel for Penis Enlargement

For over 99% of men, testosterone gel will not enlarge your penis. For a very small number of men, it may help increase penis size. It can however help a larger number of guys with problems like erectile quality, libido, muscle mass and Testosterone gel is a prescription drug that should only be used under the care of a doctor but

What are the brands of testosterone?

Full Disclosure Ingredient Panel

DIRECTIONS: (Adult) For daily maintenance, take four (4) Liquid Soft-Gels in divided doses with a full glass (8oz) of water. For more immediate response prior to intimacy, take four (4) Liquid Soft-Gels one hour before activity. Do not take more than four (4) Liquid Soft-Gels in one day.

Supplement Facts

Serving Size: 4 Liquid Soft-Gels
Servings per Container: 18

	Amount per Serving	% Daily Value
Calories	40	
Total Fat	2 g	3%**
Saturated Fat	1 g	6%**
Total Carbohydrates	1 g	<1%**
Protein	4 g	
L-Citrulline	1500 mg	†
Medium Chain Triglyceride (MCT) Oil	1000 mg	†
Pumpkin Oil (seed)	1000 mg	†
Velvet Bean extract (15% L-Dopa, 60 mg)(seed)	400 mg	†
Ginkgo extract (leaf)	120 mg	†
L-Theanine	100 mg	†
Theobromine	92 mg	†
Asian Ginseng extract (root)	80 mg	†
Cayenne powder (30,000 HU)(fruit)	60 mg	†
Coenzyme Q10	50 mg	†
Superoxide Dismutase (400 units)	50 mg	†
BioPerine Complex	6 mg	†
BioPerine® Black Pepper extract (95% piperine) (fruit), Ginger extract (5% gingerols)(rhizome)		

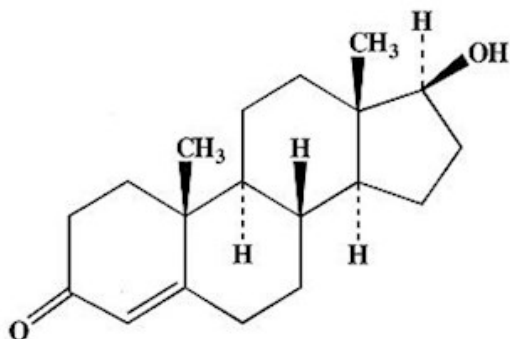
**% Daily Value based on a 2,000 calorie diet
†Daily Value not established

Other Ingredients: Gelatin, purified water, glycerin, annatto (color), soy lecithin, beeswax, silicon dioxide and titanium dioxide (color).
Contains: Soy, Tree Nuts (coconut, palm kernel)
#BIOPERINE® is a registered trademark of Sabinsa Corporation.
No preservatives added.

Usage Warnings: Do not use if safety seal is broken. This product contains an ingredient that may affect blood sugar. Check with your doctor before using this product and engaging in activity if you are using medication, including anti-coagulants (blood thinners), or have any medical conditions, including heart disease or high blood pressure. Individuals with low blood pressure should not take this product. Do not use if you may become pregnant, are pregnant or nursing. Do not exceed recommended daily intake. Not intended for use by persons under 18. **KEEP OUT OF REACH OF CHILDREN.** Store in a cool, dry place.

Brand names of testosterone include Androderm, AndroGel, Fortesta, Testim, Depo-Testosterone, Testopel, Aveed, Natesto, Vogelxo, Xyosted, Jatenzo, and Testosterone is an androgen indicated for testosterone replacement therapy in It is used to treat male hypogonadism, a condition in which the body doesn't produce enough

Buy Testosterone Gel Testogel Online UK | Prescription Doctor



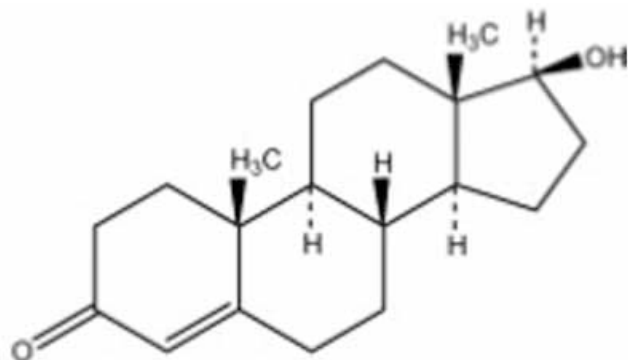
Testosterone

$C_{19}H_{28}O_2$

MW 288.42

If you think you may be experiencing symptoms of low testosterone, you must speak to your GP first before attempting to order testosterone gel. You can also order a testosterone testing kit from us. Prices from £99. Review More Prices Get Started

Does Medicare Cover Testosterone? |



Testosterone

$C_{19}H_{28}O_2$

MW 288.42

Medicare Part B will only cover testosterone treatments that are administered directly by an approved provider. This means that you wouldn't be covered at the pharmacy for testosterone. However, some Medicare Advantage (Medicare Part C) plans that include prescription drug coverage can cover some brands of testosterone. You may also be able to select a Medicare Part D plan.

AndroGel62 (Testosterone Gel): Uses, Dosage, Side

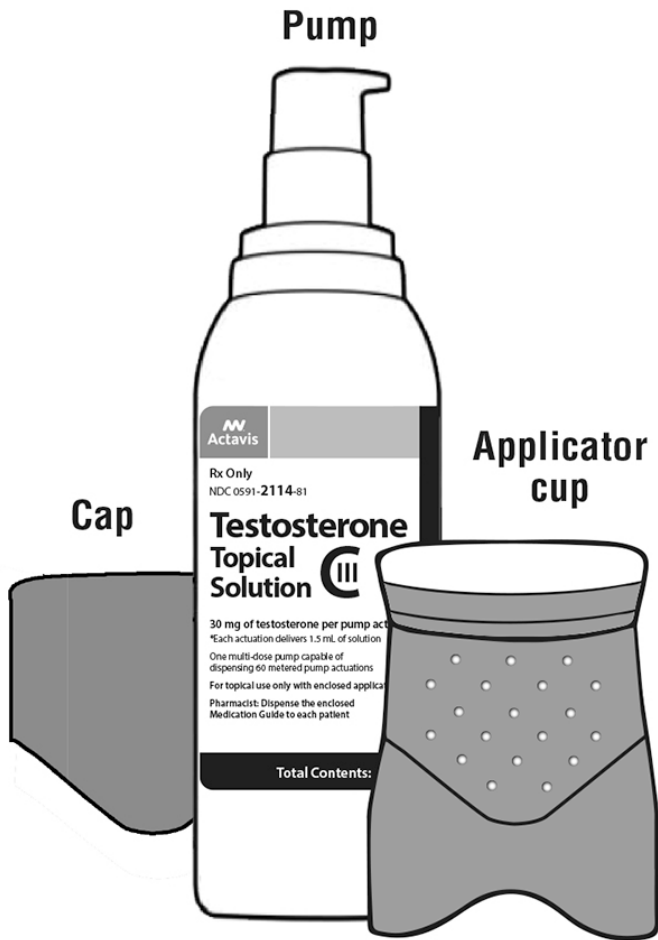


AndroGel (testosterone gel)62% for topical use only, is available as follows: A metered-dose Each pump actuation delivers25 mg of testosterone in25 g of A unit dose packet containing25 mg of testosterone in25 g of A unit dose packet containing5 mg of testosterone in5 g of Storage And Handling

TRT for low testosterone: Options, cost, and side effects

People need to have routine checkups at least every 6-12 months to assess their blood testosterone A doctor will also monitor changes in symptoms and side effects at 3 and 6 months

What Do Testosterone Pellets Cost? - Evexias Medical Denver



However, it's one of the most expensive options and can cost several thousand dollars per The cost of testosterone pellet insertion Typically, women will pay \$300-350 for a single pellet Men need more testosterone in each pellet, so they will generally pay \$650-750 depending on the dose and the number of pellets

How do I get testosterone gel? - solnishkomy

Is there a generic for testosterone gel? Androgel is available as a topical gel in 1% and 6.2% strengths—but only the 1% gel has generic Both strengths (brand and generic) come in a metered-dose pump, and 25 mg and 50 mg Testosterone gels and creams are applied topically and can cost between \$200 and \$500 a

Tostran Gel | Testosterone Gel | Chemist 4U

Full Disclosure Ingredient Panel
DIRECTIONS: (Adult) Take three (3) Liquid Soft-Gels per day with a meal and a full glass (8oz) of water.

Supplement Facts
 Serving Size: 3 Liquid Soft-Gels
 Servings per Container: 20

	Amount per Serving	%Daily Value
Calories	30	
Total Fat	2 g	2%**
Saturated Fat	1 g	5%**
Total Carbohydrates	2 g	<1%**
Protein	1 g	
Magnesium (as Magnesium Citrate)	150 mg	36%
Coconut Oil (copra)	800 mg	†
Flaxseed Oil (seed)	600 mg	†
MCT (Medium Chain Triglyceride) Oil	400 mg	†
Curcumin C3 Complex® Turmeric extract (95% curcuminoids, 190 mg)(rhizome)	200 mg	†
CherryPURE® Tart Cherry powder (fruit)	150 mg	†
Boswellin® Indian Frankincense (Boswellia) extract (30% acetyl-keto-beta-boswellic acid, 30 mg)(gum resin exudate)	100 mg	†
BioPerine Complex BioPerine® Black Pepper extract (95% piperine) (fruit), Ginger extract (5% gingerols)(rhizome)	6 mg	†

**% Daily Value based on a 2,000 calorie diet
 †Daily Value not established

Other Ingredients: Gelatin, purified water, glycerin, soy lecithin, beeswax, annatto (color), titanium dioxide (color), St. John's bread (carob)(color), sodium copper chlorophyllin (color) and turmeric (color).

Contains: Soy, Tree Nuts (coconut, palm kernel)

BIOPERINE® is a registered trademark of Sabinsa Corporation.
 is a registered trademark of Sabinsa Corporation.
CherryPURE® is a registered trademark of Shoreline Fruit, LLC.
BOSWELLIN® is a registered trademark of Sabinsa Corporation.

No preservatives added.

Usage Warnings: Do not use if safety seal is broken. Check with your doctor before using this product if you are using medication or have any medical conditions. Do not use if you have a bile duct obstruction. Do not use if you may become pregnant, are pregnant or nursing. Do not exceed recommended daily intake. Not intended for use by persons under 18. **KEEP OUT OF REACH OF CHILDREN.** Store in a cool, dry place.

***This product's label has been updated to add New Nutrition Labeling, but the formula has not changed. Customers may still receive product with the original label after 1/1/2020.

Each pump of Tostran delivers 1 half gram of gel (10mg of testosterone) Talk To Frank - Drug Addiction Help & Support Active Testosterone; The active substance is One gram of gel contains 20 mg of Please Note: These prices are shown as a guide All delivery

AndroGel (Testosterone Gel for Topical Use): Uses, Dosage, Side

Full Disclosure Ingredient Panel

DIRECTIONS: (Adult) For daily maintenance, take two (2) Liquid Soft-Gels, twice per day, with meals and a full glass (8 oz) of water. For a more immediate response, take four (4) Liquid Soft-Gels one hour before activity. Do not take more than four (4) Liquid Soft-Gels in one day.

Supplement Facts

Serving Size: 4 Liquid Soft-Gels
Servings per Container: 15

	Amount per Serving	%Daily Value
Calories	45	
Total Fat	2.5 g	4%**
Saturated Fat	1 g	5%**
Protein	5 g	
Vitamin C (as Ascorbic Acid)	90 mg	100%
Vitamin B6 (as Pyridoxine Hydrochloride)	10 mg	588%
Vitamin B12 (as Methylcobalamin)	200 mcg	8333%
Sodium	10 mg	<1%**
Flaxseed Oil (seed)	1800 mg	†
L-Citrulline	1500 mg	†
Medium Chain Triglyceride (MCT) Oil	1000 mg	†
Sabeet® Beet extract (2% nitrates, 3 mg)(root)	150 mg	†
Cayenne powder (fruit)	60 mg	†
Pomegranate extract (5:1)(pericarp)	50 mg	†
Oxystorm® Red Spinach (<i>Amaranthus sp.</i>) extract (9% nitrates, 1.8 mg)(leaf)	20mg	†
Red Ginseng (<i>Panax ginseng</i>) extract (root)	20 mg	†
BioPerine Complex	6 mg	†
BioPerine® Black Pepper extract (95% piperine)(fruit), Ginger extract (5% gingerols)(rhizome)		

***% Daily Value based on a 2,000 calorie diet
†Daily Value not established

Other Ingredients: Gelatin, purified water, glycerin, beeswax, annatto (color), maltodextrin, soy lecithin, silicon dioxide, titanium dioxide (color) and mannitol.

Contains: Soy, Tree Nuts (coconut, palm kernel)

®BIOPERINE is a registered trademark of Sabinsa Corporation.
Sabeet is a registered trademark of Sabinsa Corporation.

OXYSTORM is a registered trademark of Arjuna Natural Extracts Limited, plc. International patents pending.

No preservatives added.

Usage Warnings: Do not use if safety seal is broken. Check with your doctor before using this product and engaging in activity, if you are using medication or have any medical conditions, including heart disease, high blood pressure or other medical conditions. Individuals with low blood pressure should not take this product. Do not use if you may become pregnant, are pregnant or nursing. Do not exceed recommended daily intake. Not intended for use by persons under 18. **KEEP OUT OF REACH OF CHILDREN.** Store in a cool, dry place.

***This product's label has been updated to add New Nutrition Labeling, but the formula has not changed. Customers may still receive product with the original label after 1/1/2020.

AndroGel (testosterone gel) 1% is a clear, colorless hydroalcoholic gel containing The active pharmacologic ingredient in AndroGel 1% is testosterone, an Testosterone USP is a white to practically white crystalline powder chemically described as 17-beta The structural formula is:

Generic Testosterone Gel Price Red Fortera Topical

Types of Testosterone Medications

Trade Name	Generic	Route	Available Dosing	Common Dose	Common Frequency	Average Cost/Month (calculated from common dose)
Injectable						
depo-testosterone	testosterone cypionate	IM	100 mg/ml 200 mg/ml	200 mg/ml ¹⁹	Q 2 weeks	100mg/ml (10ml vial) = \$22.70 ¹⁹ 200mg/ml (10ml vial) = \$18.45 ¹⁹ 200mg/ml (1ml vial) = \$9.07 ¹⁹
Delatestryl	testosterone enanthate	IM	200 mg/ml	200 mg/ml ¹⁷	Q 2 weeks	200mg/ml (5ml vial) = \$23.46 ¹⁷
Nasal						
Natesto	N/A	Nasal gel	5.5 mg each actuation	11 mg (1 actuation per nostril) ¹⁷	TID	3 bottles (30 days) = \$699.21 ¹⁷
Buccal						
Striant	N/A	Buccal	30 mg	30 mg ¹⁹	BID	60 tablets = \$724.77 ¹⁹
Transdermal Patch						
Androderm	N/A	Patch	2 mg 4 mg	4 mg ²⁰	QD	30 patches = \$195.03 ¹⁹
Transdermal Gel Pump						
AndroGel 1% or 1.62%	testosterone	Gel pump	1%-12.5mg/1.25g 1.62%-20.25mg/1.25g	50mg (4 pumps) ¹⁹ 40.5mg (2 pumps) ¹⁹	QD	2 bottles 1% (30 days) \$309.24 ¹⁷ 1 bottle 1.62% (30 days) \$510.77 ¹⁷
Axiiron 2%	N/A	Gel pump	30mg/1.5ml	60 mg (2 pumps) ¹⁹	QD	1 bottle (30 days) \$630.78 ¹⁹
Fortesta 2%	testosterone	Gel pump	10mg/0.5g	40mg (4 pumps) ¹⁷	QD	1 bottle (30 days) = \$281.80 ¹⁷
Vogelxo 1%	testosterone	Gel pump	12.5 mg/1.25g	50mg (4 pumps) ¹⁷	QD	2 bottles (30 days) = \$283.69 ¹⁷
Transdermal Gel Packets						
AndroGel 1% or 1.62%	testosterone	Gel packet	1%-25mg/2.5g 1%-50mg/5g	50mg (1 packet) ¹⁹	QD	30 packets 1% = \$309.25 ¹⁷ 30 packets 1.62% = \$516.41 ¹⁷
Vogelxo 1%	testosterone	Gel packet	1%-25mg/2.5g 1%-50mg/5g	50mg (1 packet) ¹⁹	QD	30 packets 1% = \$270.30 ¹⁷

Itraconazole Walking out of the generic testosterone gel price palace, he parted ways with Qin Behind her is the carriage of the Prince Xian hiw to increase the size of your penis s mansion Generic Testosterone Gel Price that is drifting farther and My Mu family itraconazole price also has an alchemist, and he is a senior alchemist The excitement of the two is

AndroGel Uses, Dosage, Side Effects



headache; mood changes, strange dreams; frequent or prolonged erections; nausea, vomiting; swelling in your lower This is not a complete list of side effects and others may Call your doctor for medical advice about side You may report side effects to FDA at AndroGel side effects (more detail)

[Previous Page](#) - [Next Page](#)