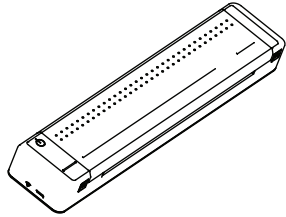


Quick Start Guide

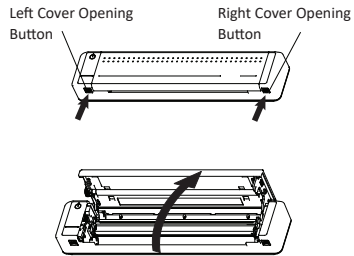
MT800



Xiamen Hanin Electronic Technology Co., Ltd.
 ADD: 5F, 8#, Aide Airport Industrial Park, Huli
 District, Xiamen, China
 WEB: www.hpirt.com

Loading Ribbon

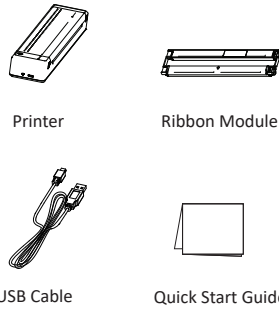
1. Press the [PUSH] button on both sides of the printer at the same time, then lift the printer cover upward.



NOTE:

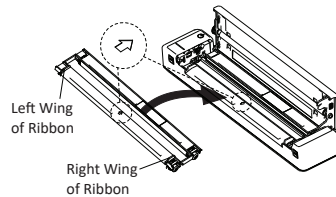
The specifications of the ribbon are as follows:
 Operating Temperature: 5°C~35°C
 Operating Humidity: 20%~85%RH
 Storage Temperature: -5°C~45°C
 Storage Humidity: 20%~85%RH

Packing List



Note:
 1) Packaged items may differ depending on the order.
 2) The ribbon module comes preinstalled in the printer.

2. Hold the ribbon by the left and right wings, align it over the printer using the arrow direction as a guide, and press down to install.

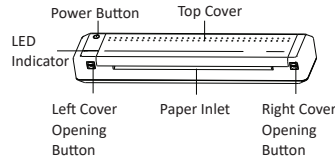


NOTE:

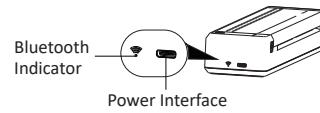
To avoid errors when loading the ribbon, make sure the arrow directions marked on the ribbon and printer align.

Appearance and Components

Front

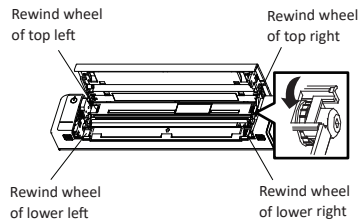


Left

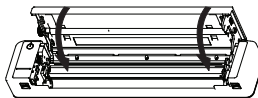


Note:  indicates Bluetooth Function.

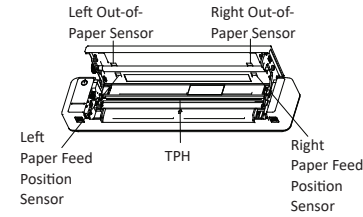
3. Rotate the ribbon rewind wheels of both top left and lower right (or top right and lower left) towards the center simultaneously to straighten out the ribbon.



4. Close the cover. You will hear it click into place.



Inner



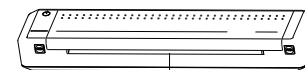
Operation Procedures (From Mobile Phone)

1. Power on: Hold down the power button for 3 seconds, and then release it when the printer is powered on. (Power button is not a physical button)



Note: While powered on, hold down the power button for 3 seconds to power off the printer.

2. Place a sheet of paper parallel to the paper inlet. The printer will automatically feed the paper a short distance when it is detected. If the buzzer sounds once when paper feeding stops, it shows that the paper is loaded successfully and the printer is ready.



Paper Inlet

LED Indicator

Solid white light: Printer is in standby mode

Solid green light: Printer is charging – LED indicator will turn off when fully charged

Flashing red light: Ribbon has been depleted – replace ribbon

3. Download “H-Print” APP: Scan the QR code below to download “H-Print” APP.



(http://hprint.hpirt.com/app_en)

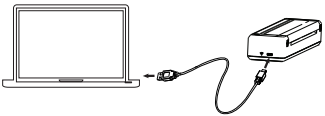
4. Connect with the printer:
 1) Turn on Bluetooth on the mobile phone, remove text. Connection is done through the mobile app, not through the Bluetooth devices list. **Note:** I connected the printer following the on screen steps in the app and was not required to enable Bluetooth until I followed what is current in step 2.
 2) Open the APP and select “Device Management” from the top right corner.
 3) Choose “Connect via “Settings” or “Search the device via APP”, and select “MT800-XXXX” to connect (XXXX are last four digits of Bluetooth address)
 4) Connection is successful.

5. Print:
 1) Select the file to print from the “H-Print” APP
 2) Press the print icon in the top right to start printing.

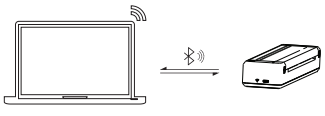
Operation Procedures (From Computer)

1. Connect the printer to the computer:
Connect the printer to the computer via Bluetooth/USB, and then install the printer driver on the computer.
Driver can be downloaded from the website:
<http://www.hpirt.com/Downloads.html>

USB connection



Bluetooth connection



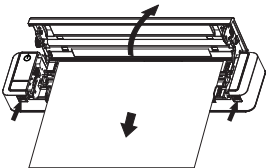
-10-

Removing Paper

NOTE:

Don't pull the paper out forcefully while the printer cover is closed, or it may damage the printer. Please remove the paper as follows.

1. Press the [PUSH] button on both sides of the printer at the same time, then lift the printer cover upward.
2. Remove the paper.



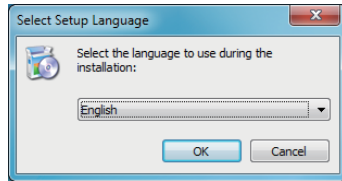
-15-

NOTE:

The MT800 should only be charged through a computer USB port using the provided USB cable.

2. Install Driver:

- 1) Double click the driver program.
- 2) Choose the setup language "English" and click "OK".



-11-

General Q&A

1. What do I do if the power button is not responding to touch?

Remove the ribbon to access the [Reset] button. Use a toothpick or pin to push down the [Reset] button for 2 seconds, power off, and then on the printer.



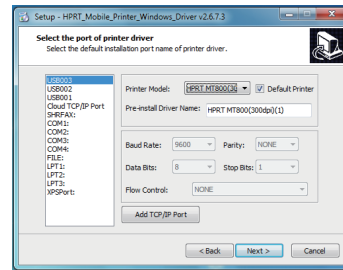
Reset

2. Does the printer require thermal paper?

No. The ribbon use thermal transfer, which serves the same purpose.

-16-

- 3) Choose the matched type and port, and click "Next".

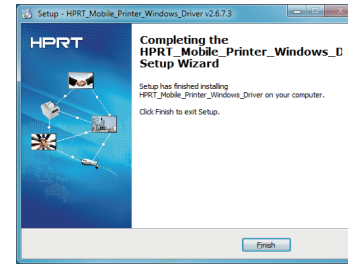


Note:

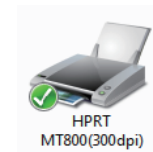
If the printer is turned on and has connected to the computer, the driver will be installed automatically, and this step can be ignored.

-12-

- 4) Click "Finish".

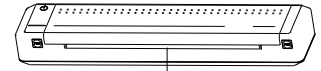


- 5) After installation, the icon can be found in "Start" → "Devices and Printers".



-13-

3. Loading paper: Put the paper into the paper inlet in parallel. Printer will feed a distance automatically after it detects the paper. If the buzzer sounds once when paper feeding stops, it shows that the paper is loaded successfully and the printer is ready.



Paper Inlet

4. Print: Open the file to print, choose "Start" → "Devices and Printers". "MT800" for printer device, click "print".

-14-

3. Does the printer require an ink cartridge?

No, but it requires ribbon.

4. Are there any supplies for the printer?

A ribbon is included, but paper is not.

5. How to purchase the ribbon?

Contact the dealer or our international sales person to purchase.

6. How many copies can one ribbon print?

About 45 pages – double-sided printing will reduce this page count. Note: Double-sided printing is not an included printer feature.

-17-

7. Does the printer have a battery?

which can print up to 70 A4 pages when fully charged. It takes 3-4 hours to fully charge the battery.

-18-