



ELECTRIC DRIVES

FOR EVERY DEMAND



Overview of spare parts

Low voltage electrical machines



ELECTRIC DRIVES

FOR EVERY DEMAND



Transportation



Machine and plant engineering



Steel and rolling mills



Cement and mining industry



Shipbuilding



Chemical, oil and gas industry



Water management



Renewable energy



Power plant technology

There are currently around 30 million electric machines bearing the VEM badge in use around the world. They are found aboard ships, in trains and trams, and in chemical plants and rolling mills. VEM generators produce electricity in hydropower plants and wind farms.

The VEM product range embraces variable-speed electric drive systems, special motors and special machines for outputs ranging from 0.06 kW to 42 MW, as well as a diversity of drive technology and power generation components.

Content

Seite

General notes	3
Overview of spare parts: Three-phase asynchronous motors with squirrel-cage rotor	4
Exploded view (IE.-)K2.R 56 to (IE.-)132 T	
Exploded view K1.R, (IE1-)K2.R, (IE1-)K.2R 112 to 355, IE2-W.1R, IE3-W41R	
Overview of spare parts: Three-phase transnorm motors with squirrel-cage rotor	7
Exploded view W42R 355 to 400	
Overview of spare parts: Three-phase asynchronous motors with slip-ring rotor	9
Exploded view SPER 132-250/S11R 280-315 M, SPEH 132-250/S11R 250-315 M, SPR, SPH	
Exploded view S11R/S11H 315 MX, MY, LX, LY	
Overview of spare parts: Three-phase roller table motors	12
Exploded view ARB 22 to 65	
Exploded view ARC 112 to 400	
Exploded view AR. 112 to 400	

General notes

Delivery promise regarding replacement motors and spare parts

Spare parts remain available for five years after discontinuation of a series.

Beyond this period of five years, VEM continues to provide technical information on both the complete motor and its components, and endeavours to supply requested spare parts (subject to availability); if spare parts are no longer available, corresponding manufacturing documents can be provided.

Information required when ordering spare parts

Orders for spare parts must include the following information:

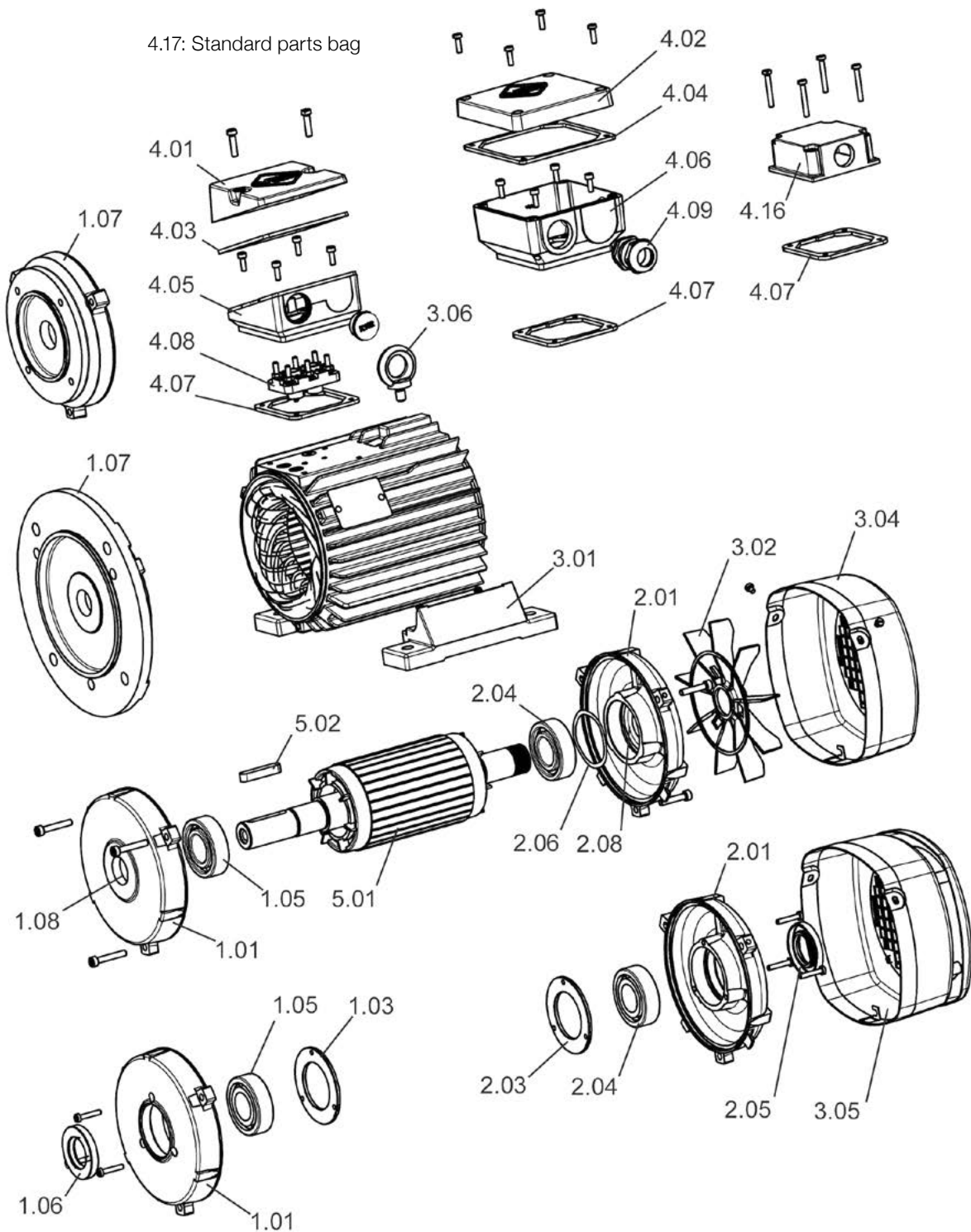
- Motor designation and motor number (serial number)
- Designation of the spare part
- Year of manufacture

Overview spare parts: Three-phase asynchronous motors with squirrel-cage rotor

Item no.	Designation
1.01	End shield, D-end
1.02	Bearing cover, D-end, outside
1.03	Bearing cover, D-end, inside
1.04	Disc spring/wave spring, D-end, not with roller bearings
1.05	Antifriction bearing, D-end
1.06	V-ring, D-end
1.07	Flange end shield
1.08	Felt ring, D-end
2.01	End shield, N-end
2.02	Bearing cover, N-end, outside
2.03	Bearing cover, N-end, inside
2.04	Antifriction bearing, N-end
2.05	V-ring, N-end
2.06	Wave spring, N-end (or D-end)
2.08	Felt ring, N-end
3.01	Motor feet (pair)
3.02	Fan
3.03	Fan cowl, plastic
3.04	Fan cowl, sheet steel
3.05	Fan cowl with canopy
3.06	Eye bolt
4.01/4.02	Terminal box cover
4.03/4.04	Gasket, terminal box cover
4.05/4.06	Terminal box base
4.07	Gasket, terminal box base
4.08	Terminal plate
4.09	Cable gland
4.10	Screw plug
4.11	Cable gland for thermal winding protection
4.12	Terminal for thermal winding protection
4.13	Clamp
4.14	Sealing plugs
4.15	Adapter plate
4.16	Flat terminal box
4.17	Standard parts bag
5.01	Rotor, complete
5.02	Shaft key
6.01	Thrower ring, D-end
6.02	Thrower ring, N-end
6.03	Labyrinth gland, D- and N-end
6.04	Guide disc, D-end
6.05	Guide disc, N-end

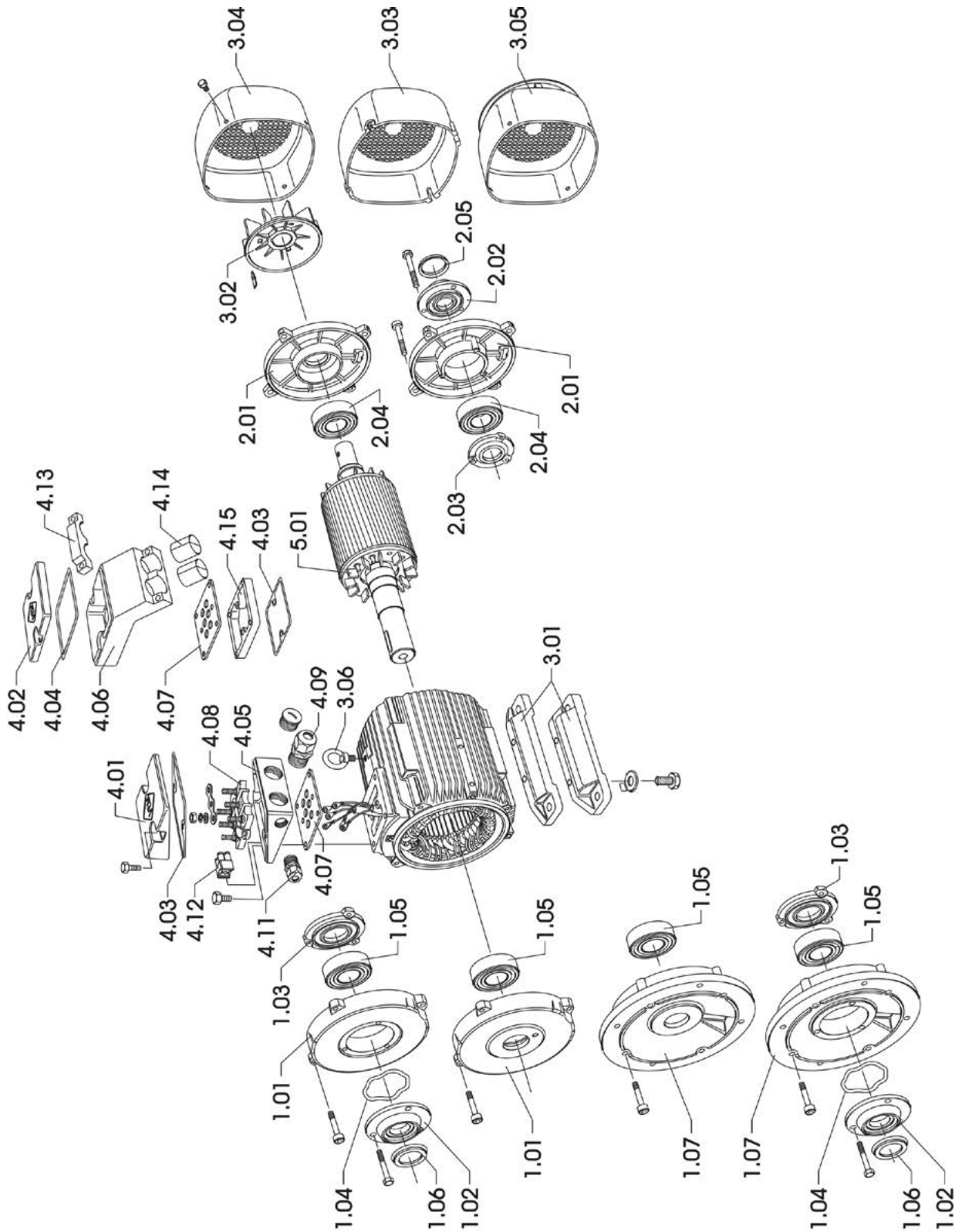
Three-phase asynchronous motors with squirrel-cage rotor, (IE.-)K2.R 56 to (IE.-)132 T

(Example; delivered version may differ in certain details)



Three-phase asynchronous motors with squirrel-cage rotor, K1.R, (IE1-K2.R, (IE1-K.2R 112 to 355 IE2-W.1R, IE3-W41R

(Example; delivered version may differ in certain details)

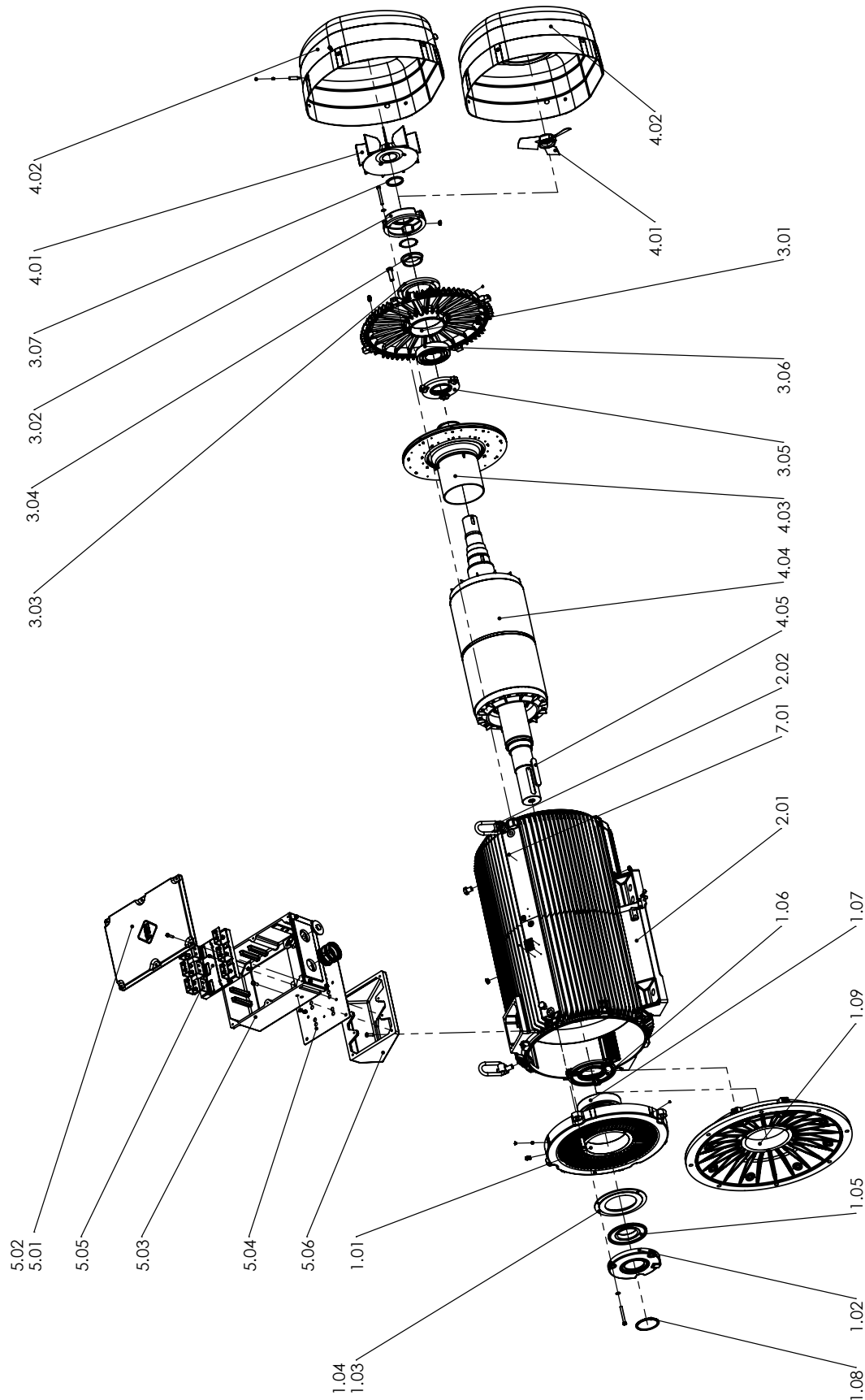


Overview spare parts: Three-phase transorm motors with squirrel-cage rotor Basic version W42R 355 to 400

Item no.	Designation
1.01	End shield, D-end
1.02	Bearing cover, D-end, outside
1.03	Guide disc, D-end
1.04	Pressure springs
1.05	Thrower ring, D-end
1.06	Bearing cover, D-end, inside
1.07	Antifriction bearing, D-end
1.08	Sealing ring, D-end
1.09	Flange end shield
2.01	Housing with winding
2.02	Eye bolt
3.01	End shield, N-end
3.02	Bearing cover, N-end, outside
3.03	Guide disc, N-end
3.04	Thrower ring, N-end
3.05	Bearing cover, N-end, inside
3.06	Antifriction bearing, N-end
3.07	Sealing ring, N-end
4.01	Fan
4.02	Fan cowl
4.03	Internal fan
4.04	Rotor, complete
4.05	Shaft key
	Terminal box, motor type W4..
5.01	Terminal box cover
5.02	Gasket, terminal box cover
5.03	Terminal box base
5.04	Gasket, terminal box base
5.05	Terminal plate
5.06	Adapter flange with gasket
7.01	Transponder

Three-phase transnorm motor with squirrel-cage rotor, basic version W42R 355 to 400

(Example; delivered version may differ in certain details)

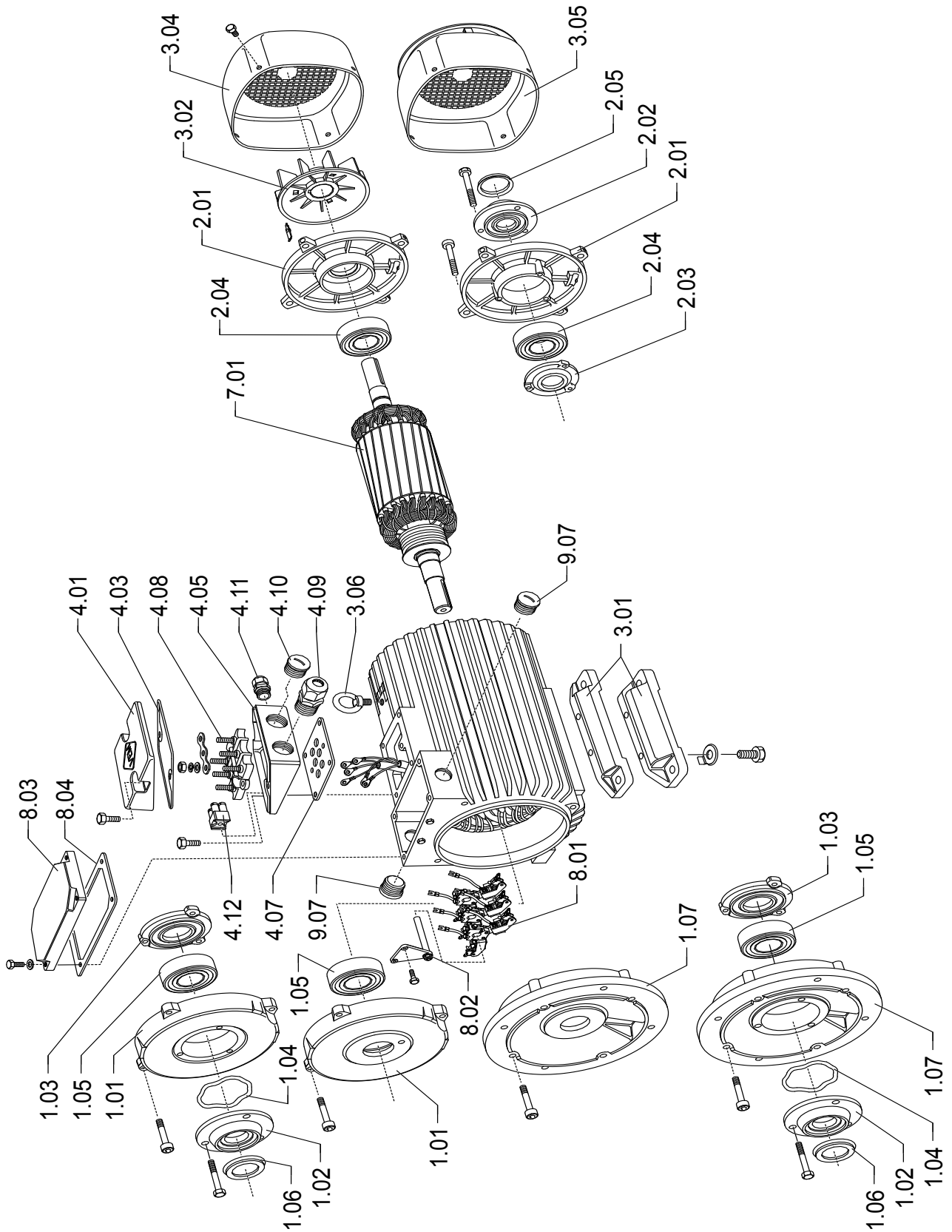


Overview spare parts: Three-phase asynchronous motors with slip-ring rotor

Item no.	Designation
1.01	End shield D-end
1.02	Bearing cover, D-end, outside
1.03	Bearing cover, D-end, inside
1.04	Disc spring/wave spring, D-end, not with roller bearings
1.05	Antifriction bearing, D-end
1.06	V-ring, D-end
1.07	Flange end shield
1.08	Felt ring, D-end
2.01	End shield, N-end
2.02	Bearing cover, N-end, outside
2.03	Bearing cover, N-end, inside
2.04	Antifriction bearing, N-end
2.05	V-ring, N-end
2.06	Wave spring
2.08	Felt ring, N-end
3.01	Motor feet (pair)
3.02	Fan
3.03	Fan cowl, plastic
3.04	Fan cowl, sheet steel
3.05	Fan cowl with canopy
3.06	Eye bolt
4.01/4.02	Terminal box cover
4.03/4.04	Gasket, terminal box cover
4.05/4.06	Terminal box base
4.07	Gasket, terminal box base
4.08	Terminal plate
4.09	Cable gland
4.10	Screw plug
4.11	Cable gland for thermal winding protection
4.12	Terminal for thermal winding protection
4.13	Clamp
4.14	Sealing plugs
4.15	Adapter plate
4.16	Flat terminal box
4.17	Standard parts bag
5.01	Rotor, complete
6.01	Thrower ring, D-end
6.02	Thrower ring, N-end
6.03	Labyrinth gland, D- and N-end
6.04	Guide disc, D-end
6.05	Guide disc, N-end
7.01	Slip-ring rotor with slip rings
8.01	Brush holder
8.02	Brush carrier plate with brush pin
8.03	Protective cover for slip ring compartment
8.04	Gasket for protective cover
8.05	Cover for fan cowl
9.01	Terminal box cover for rotor terminal box
9.02	Gasket, terminal box cover for rotor terminal box
9.03	Terminal plate for rotor connection
9.04	Terminal box base for rotor connection
9.05	Cable gland for rotor connection
9.06	Adapter flange for rotor terminal box
9.07	Screw plug for rotor connection

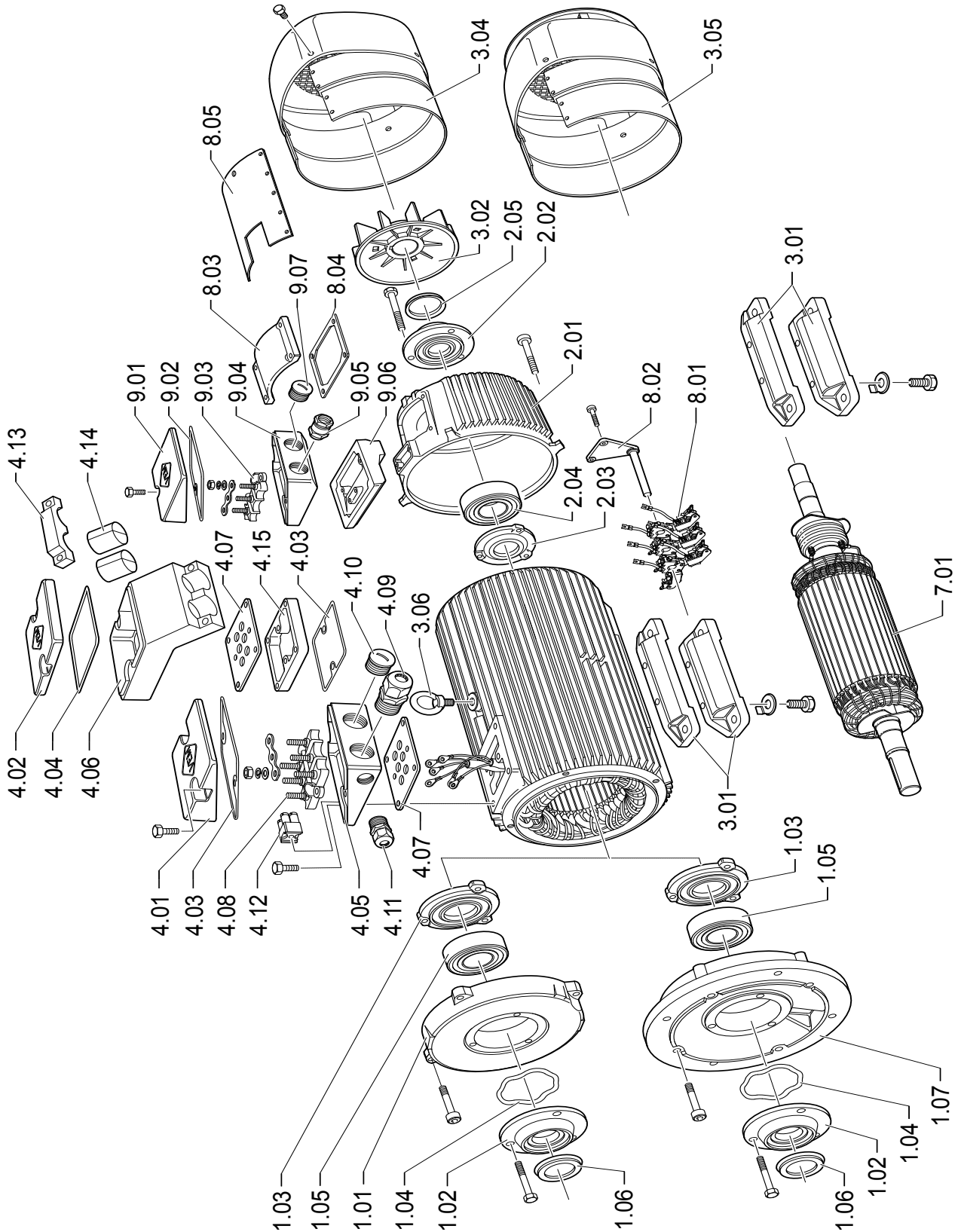
Three-phase asynchronous motor with slip-ring rotor, basic version
SPER 132-250/S11R 280-315 M, SPEH 132-250/S11R 250-315 M, SPR, SPH

(Example; delivered version may differ in certain details)



Three-phase asynchronous motor with slip-ring rotor, basic version
S11R 315 MX, MY, LX, LY / S11H 315 MX, MY, LX, LY

(Example; delivered version may differ in certain details)

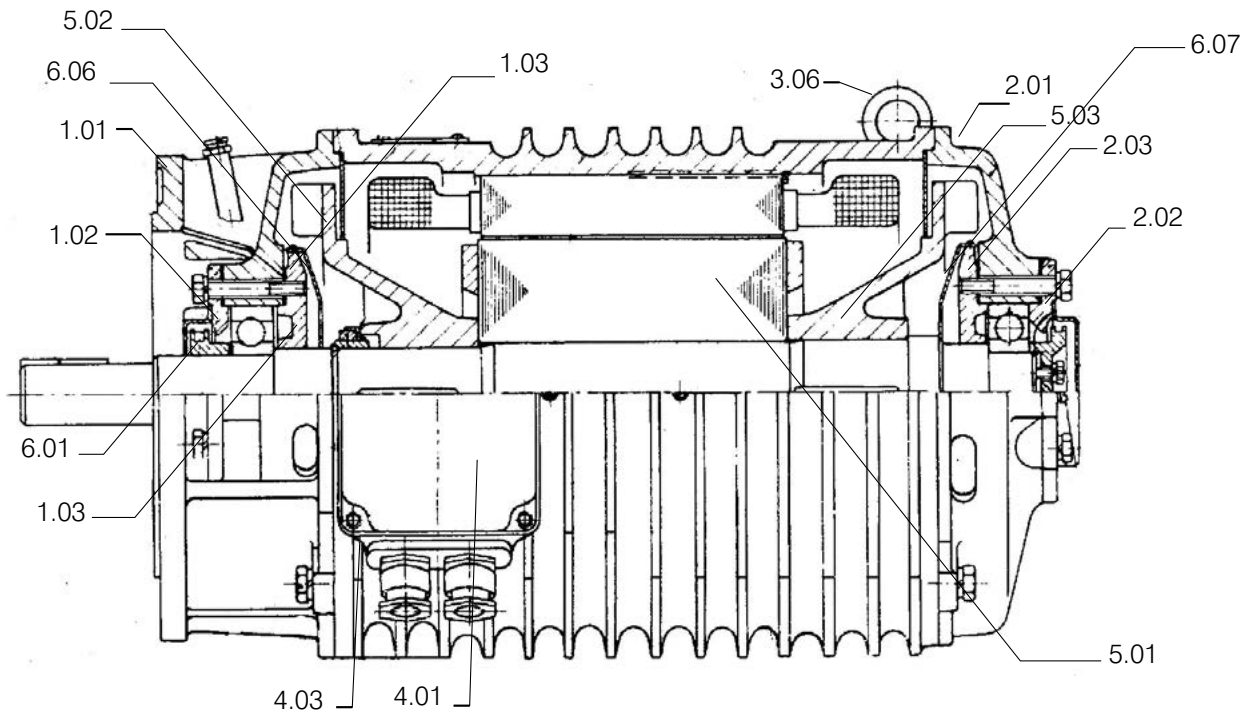


Overview spare parts: Three-phase roller table motors

Item no.	Designation
1.01	End shield D-end
1.02	Bearing cover, D-end, outside
1.03	Bearing cover, D-end, inside
1.04	Disc spring/wave spring, D-end, not with roller bearings
1.05	Antifriction bearing, D-end
1.06-1	V-ring, D-end
1.06-2	y-ring, D-end
1.07	Flange end shield
1.08-1	Radial shaft seal 1, D-end
1.08-2	Radial shaft seal 2, D-end
1.09	Liner, D-end
2.01	End shield, N-end
2.02	Bearing cover, N-end, outside
2.03	Bearing cover, N-end, inside
2.04	Antifriction bearing, N-end
2.05	V-ring, N-end
2.06	Wave spring, N-end (or D-end)
3.01	Motor feet (pair)
3.02	Fan
3.03	Fan cowl, plastic
3.04	Fan cowl, sheet steel
3.05	Fan cowl with canopy
3.06	Eye bolt
4.01/4.02	Terminal box cover
4.03/4.04	Gasket, terminal box cover
4.05/4.06	Terminal box base
4.07	Gasket, terminal box base
4.08	Terminal plate
4.09	Cable gland
4.10	Screw plug
4.11	Cable gland for thermal winding protection
4.12	Terminal for thermal winding protection
4.13	Clamp
4.14	Sealing plugs
4.15	Adapter plate
4.16	Flat terminal box
4.17	Standard parts bag
5.01	Rotor, complete
5.02	Heat sink, D-end
5.03	Heat sink, N-end
6.01	Thrower ring, D-end
6.02	Thrower ring, N-end
6.03	Labyrinth gland, D- und N-end
6.04	Guide disc, D-end
6.05	Guide disc, N-end
6.06	Cover, D-end
6.07	Cover, N-end
7.01	Speed sensor or tacho
7.02	Brake
8.01	Gearbox

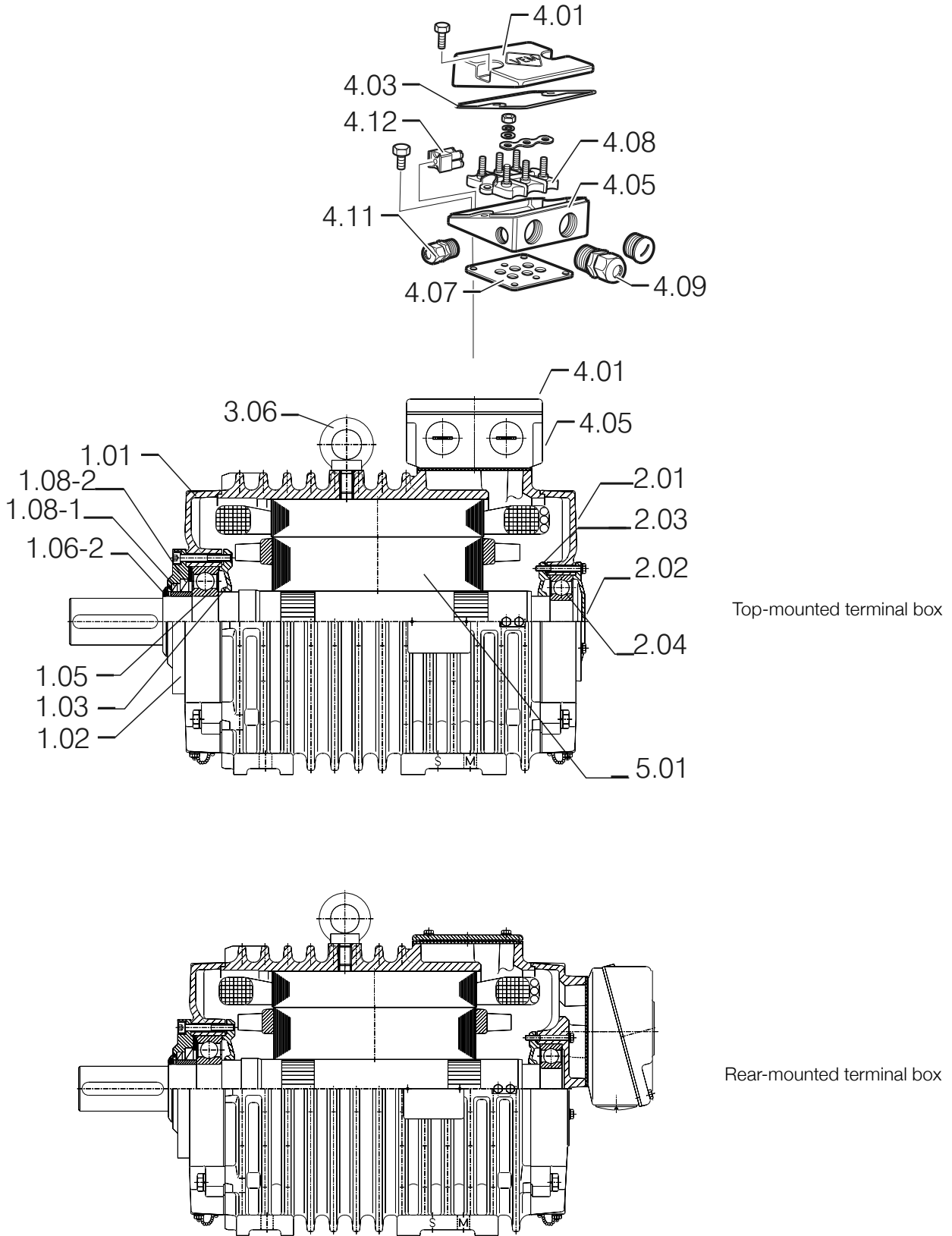
Three-phase roller table motor, basic version ARB 22-65

(Example for construction type IM B5, further types (IM B3 und IM B35) possible;
delivered version may differ in certain details)



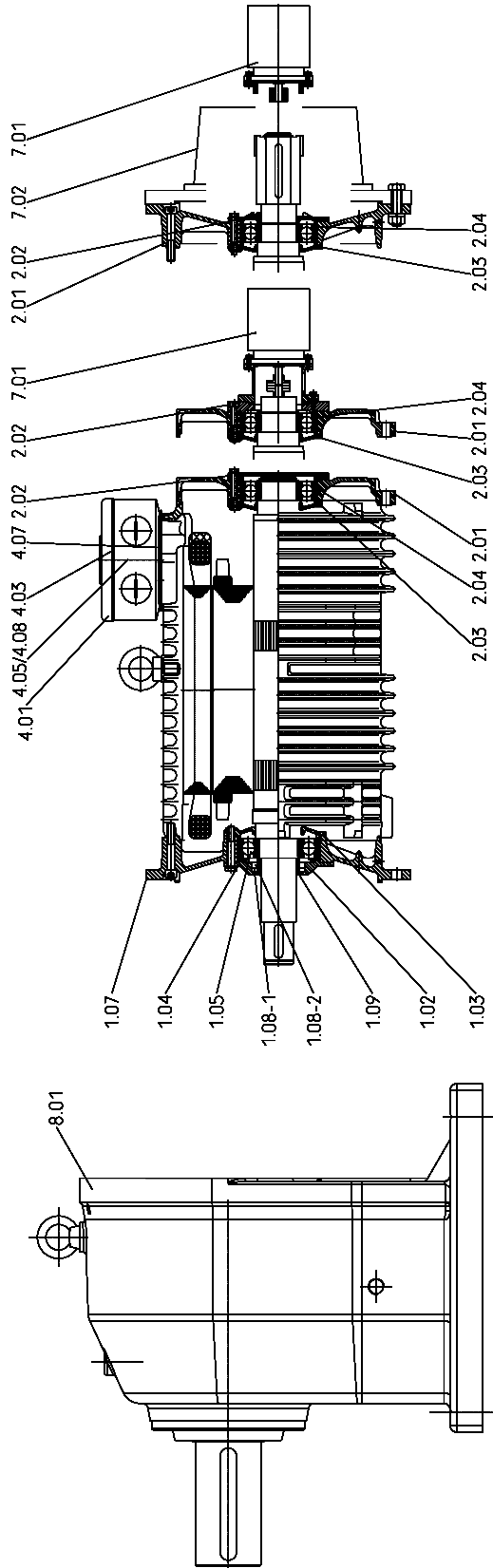
Three-phase roller table motor, basic version ARC 112-400

(Example; delivered version may differ in certain details)



Three-phase roller table motor, special version AR. 112–400
 Geared motor version
 Built-on speed sensor or tacho, brake, speed sensor or tacho

(Example; delivered version may differ in certain details)





ELECTRIC DRIVES

FOR EVERY DEMAND

VEM GmbH

Pirnaer Landstraße 176
01257 Dresden
Germany

VEM Vertrieb | VEM Sales

Fachbereich Niederspannung | Low voltage department
Tel. +49 3943 68-3127
Fax +49 3943 68-2440
E-Mail: low-voltage@vem-group.com

Fachbereich Hochspannung | High voltage department
Tel. +49 351 208-3237
Fax +49 351 208-1108
E-Mail: high-voltage@vem-group.com

Fachbereich Antriebssysteme | Drive systems department
Tel. +49 351 208-1180
Fax +49 351 208-1185
E-Mail: drive-systems@vem-group.com

VEM Kundendienst | VEM Service

Tel. +49 351 208-3237
Fax +49 351 208-1108
E-Mail: service@vem-group.com

www.vem-group.com