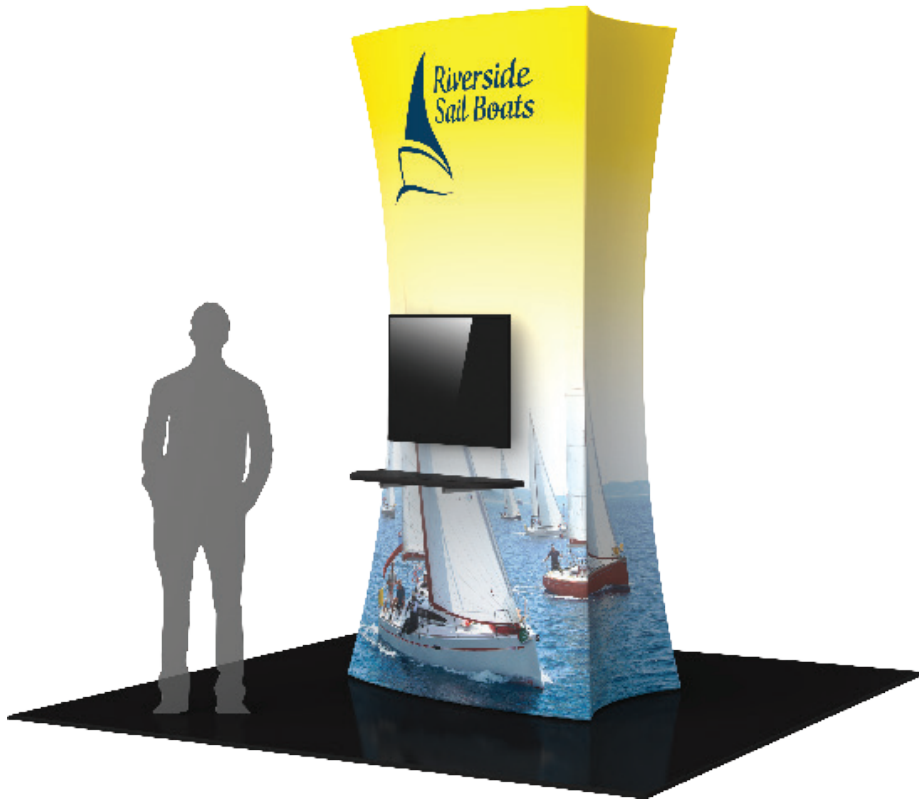


# Formulate Tower - 02

## TOWER-02


When you are looking for a way to draw attention and captivate your audience at a tradeshow, special event, or in a permanent environment, these Formulate® tension fabric architectural structures are designed to impress. Mix and match the Formulate line of towers to add architecture and drama to any event or interior space. Cylinder, Rectangular and Shield-shaped towers come in 12', 10' and 8' heights and 3' square / diameters at the tops and bottoms.



## features and benefits:

- Premium aluminum tube frames with spigot and snap button assembly
- Easy to store and ship
- Quick to set up
- Lifetime limited hardware warranty against manufacturer defects
- One zipper pillowcase fabric graphic
- Kit includes:
  - (2) medium monitor mounts, can hold 32-55" monitor/ max weight 15 lbs
  - (2) shelves, can hold max weight 15 lbs

## dimensions:

Hardware	Graphic
<p>Assembled unit: 60.15" w x 120" h x 54.48" d 1528mm(w) x 3048mm(h) x 1384mm(d)</p> <p>Approximate weight with cases: 140 lbs / 64 kgs</p>	<p>Refer to related graphic template for more information.</p> <p>Visit: <a href="http://www.exhibitors-handbook.com/graphic-templates">www.exhibitors-handbook.com/graphic-templates</a></p>
Shipping	
<p>Packing case(s): 1 OCE-2 Case 1 OCH Case</p> <p>Shipping dimensions: OCE-2: Expandable case length (l) may vary 40"-66" l x 18" h x 18" d 1016mm-1676mm(l) x 457mm(h) x 457mm(d)</p> <p>OCH: 50" l x 29" h x 12" d 1270mm(l) x 737mm(h) x 305mm(d)</p> <p>Approximate total shipping weight (includes cases &amp; graphics): 150 lbs / 68kgs</p>	
	additional information:
	<p>Graphic material: dye-sublimation zipper pillowcase fabric</p> <p>*Monitors not included</p> <p>When included in a larger kit, a different packaging solution will be listed to accommodate all contents of the kit. Individual packaging no longer provided.</p> <p><b>2 person assembly recommended:</b></p> 

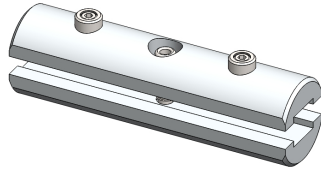
We are continually improving and modifying our product range and reserve the right to vary the specifications without prior notice. All dimensions and weights quoted are approximate and we accept no responsibility for variance. E&OE. See Graphic Templates for graphic bleed specifications.

# Included In Your Kit

Tools, Components,  
& Connectors



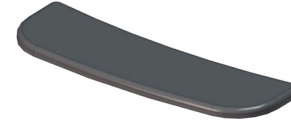
ALLEN KEY SET x1



ES30 x44

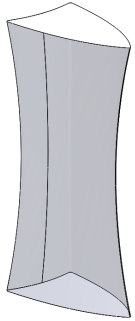


TUBE-M-MB x2



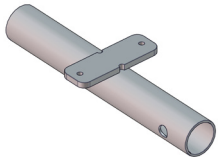
SHLF-TOWER-02-1 x2

Graphics

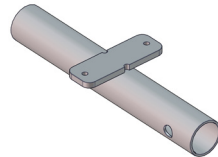


TOWER-02-G x1

Tubes



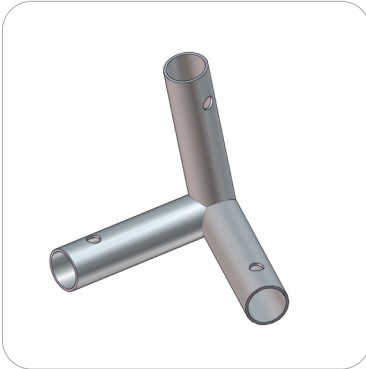
TOWER-02-T17 x2



TOWER-02-T18 x2

# Included In Your Kit

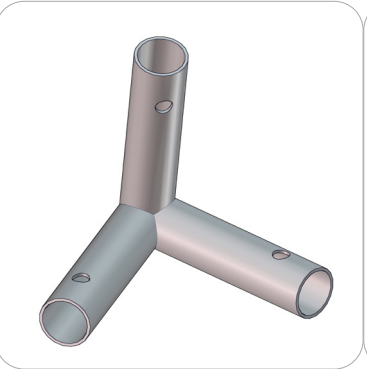
Tubes



TOWER-02-T1 x2



TOWER-02-T2 x2



TOWER-02-T3 x2



TOWER-02-T4 x2



TOWER-02-T5 x2



TOWER-02-T6 x4



TOWER-02-T7 x2



TOWER-02-T8 x2



TOWER-02-T9 x1



TOWER-02-T10 x2



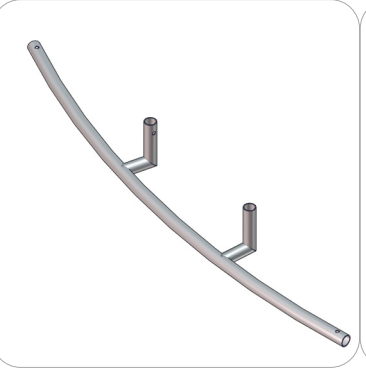
TOWER-02-T11 x1



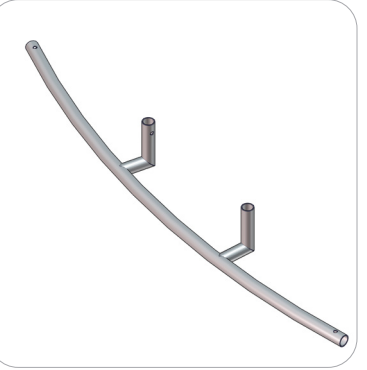
TOWER-02-T12 x2



TOWER-02-T13 x2



TOWER-02-T15 x1

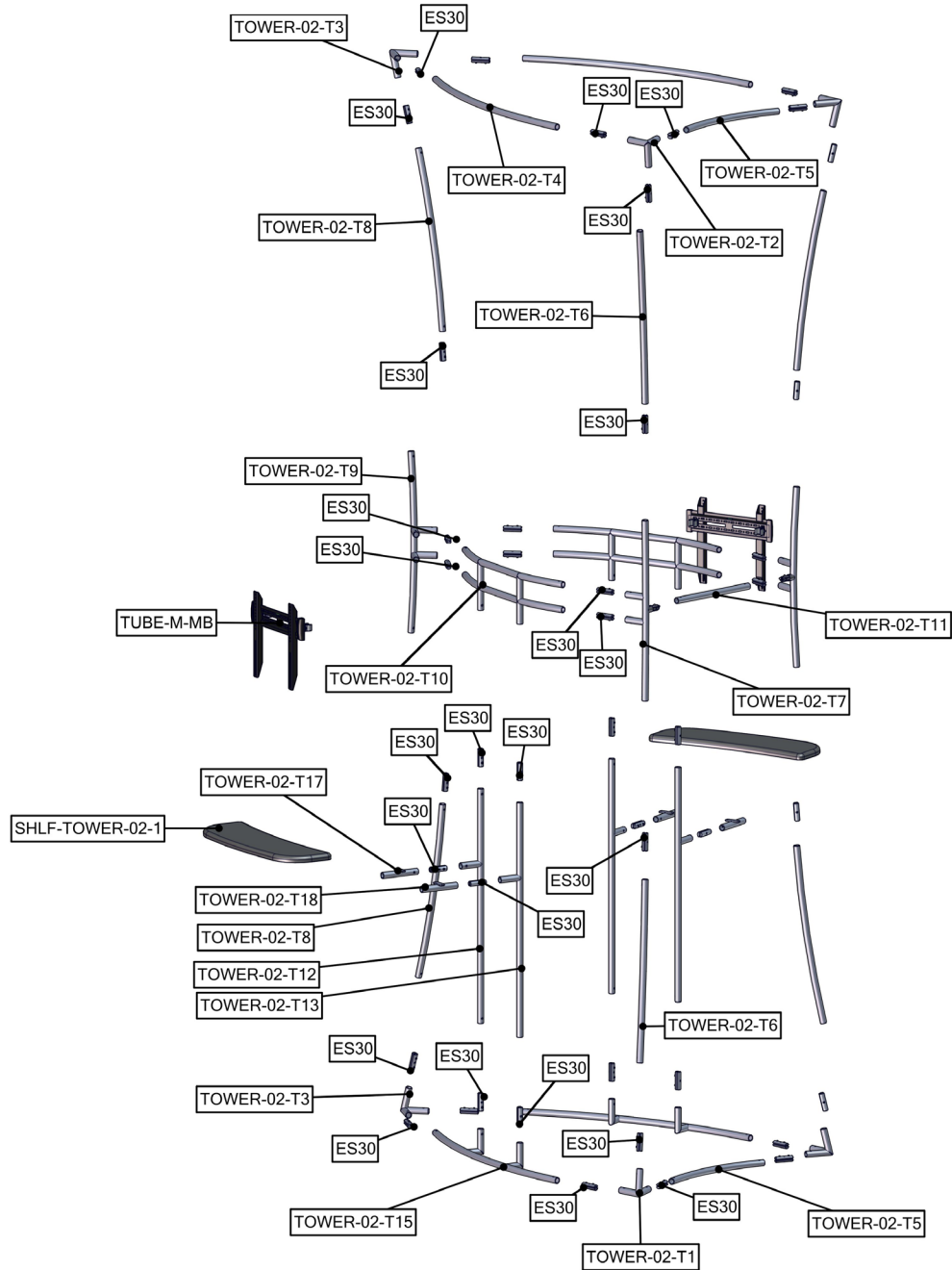


TOWER-02-T16 x1

# Exploded View

## TOWER-02

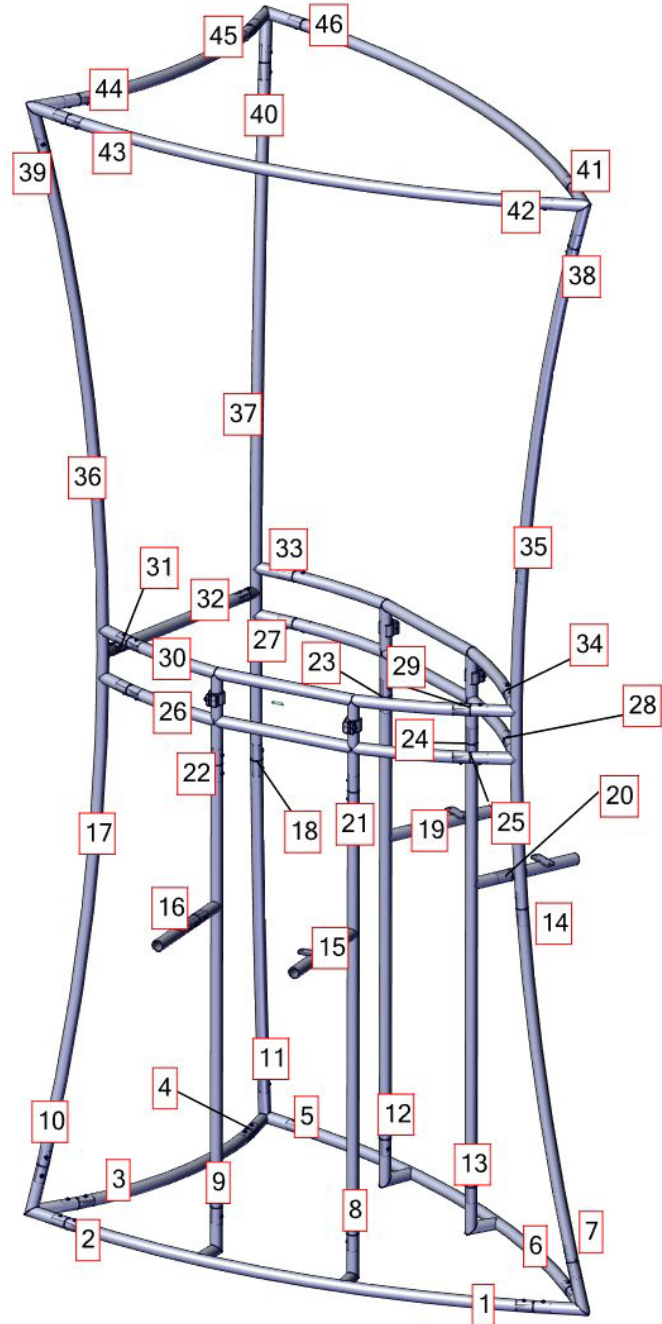
### FRAME A



# Labeling Diagram

**TOWER-02**

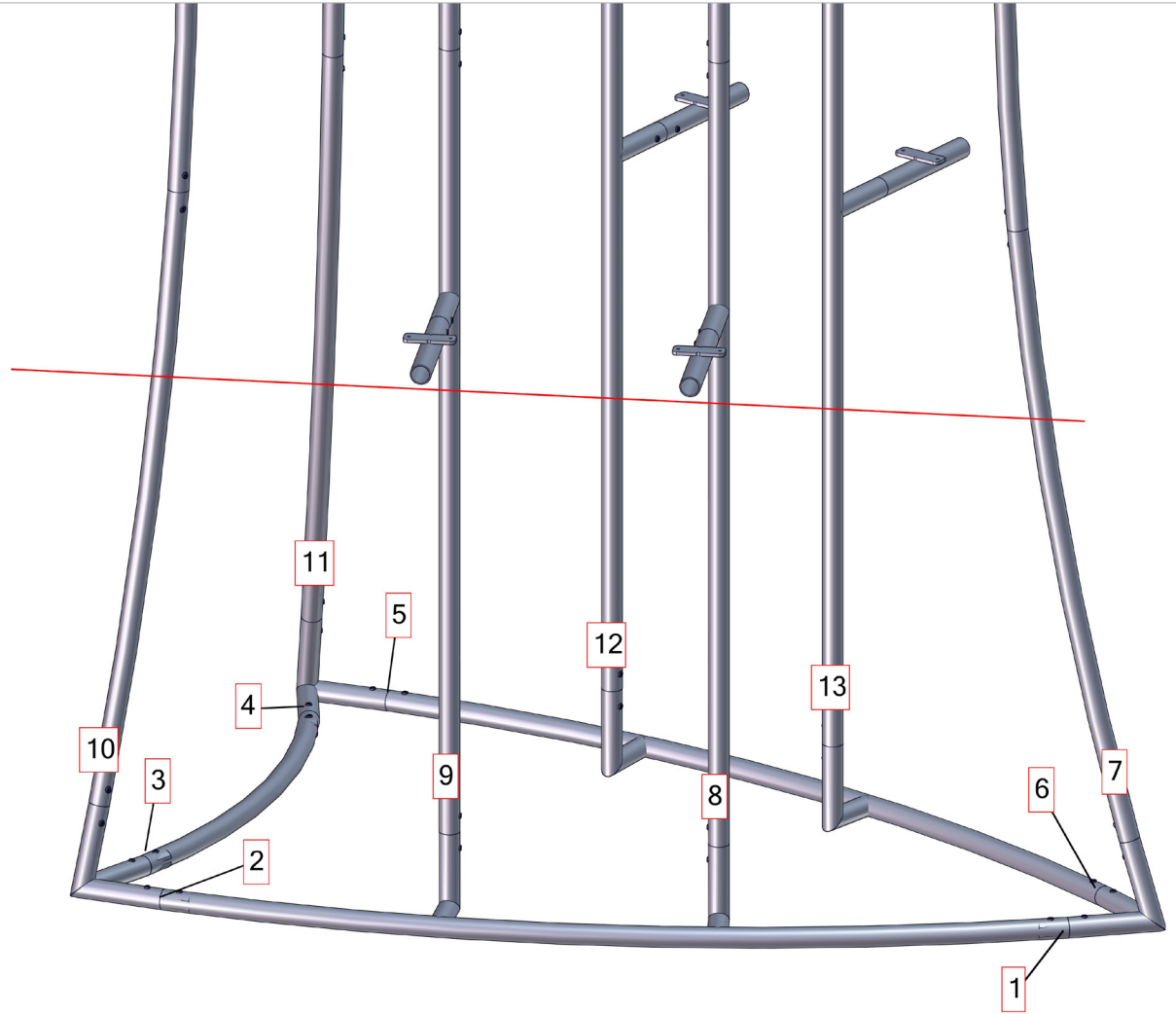
**FRAME A**



# Labeling Diagram

**TOWER-02**

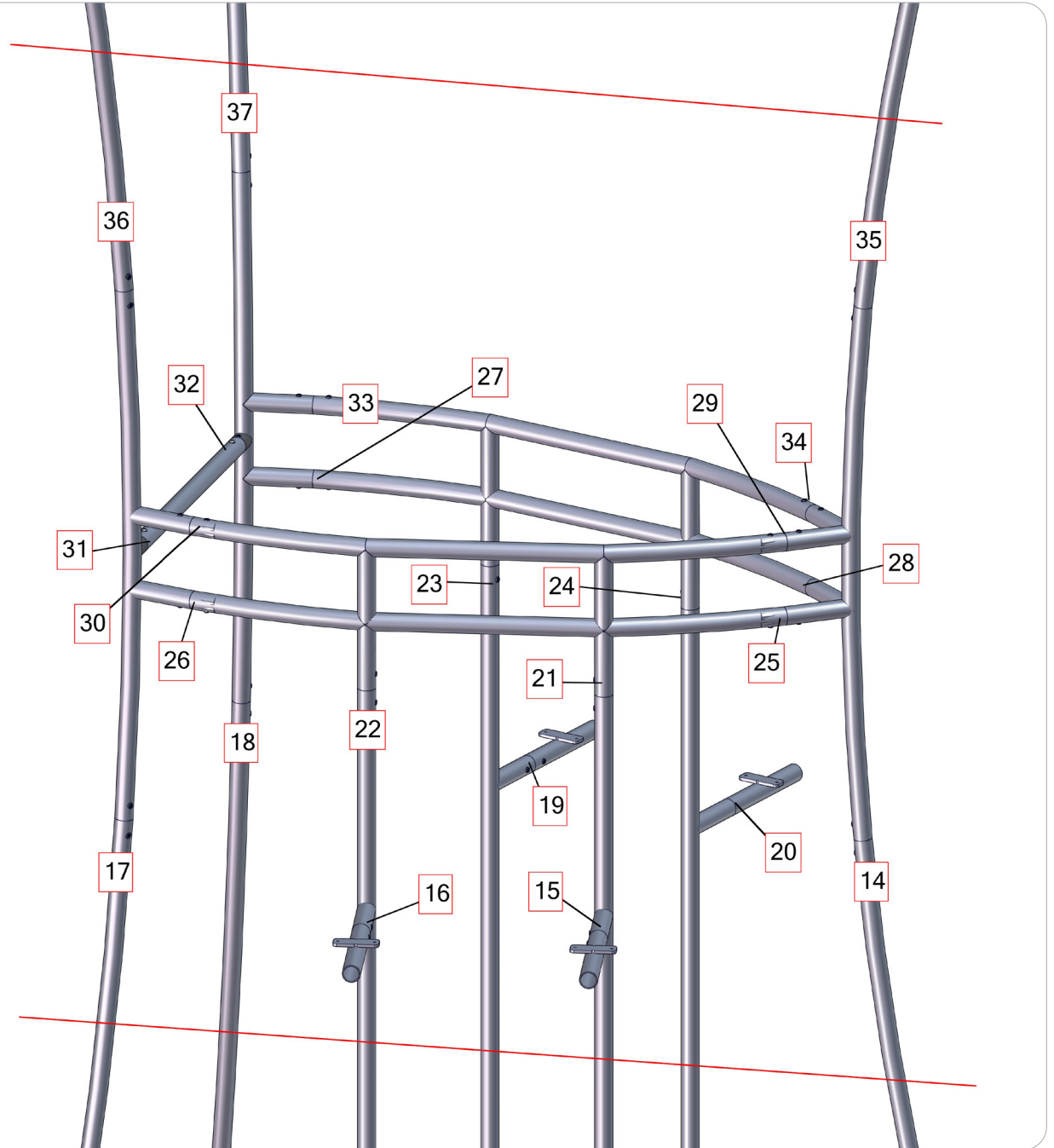
**FRAME A**



# Labeling Diagram

**TOWER-02**

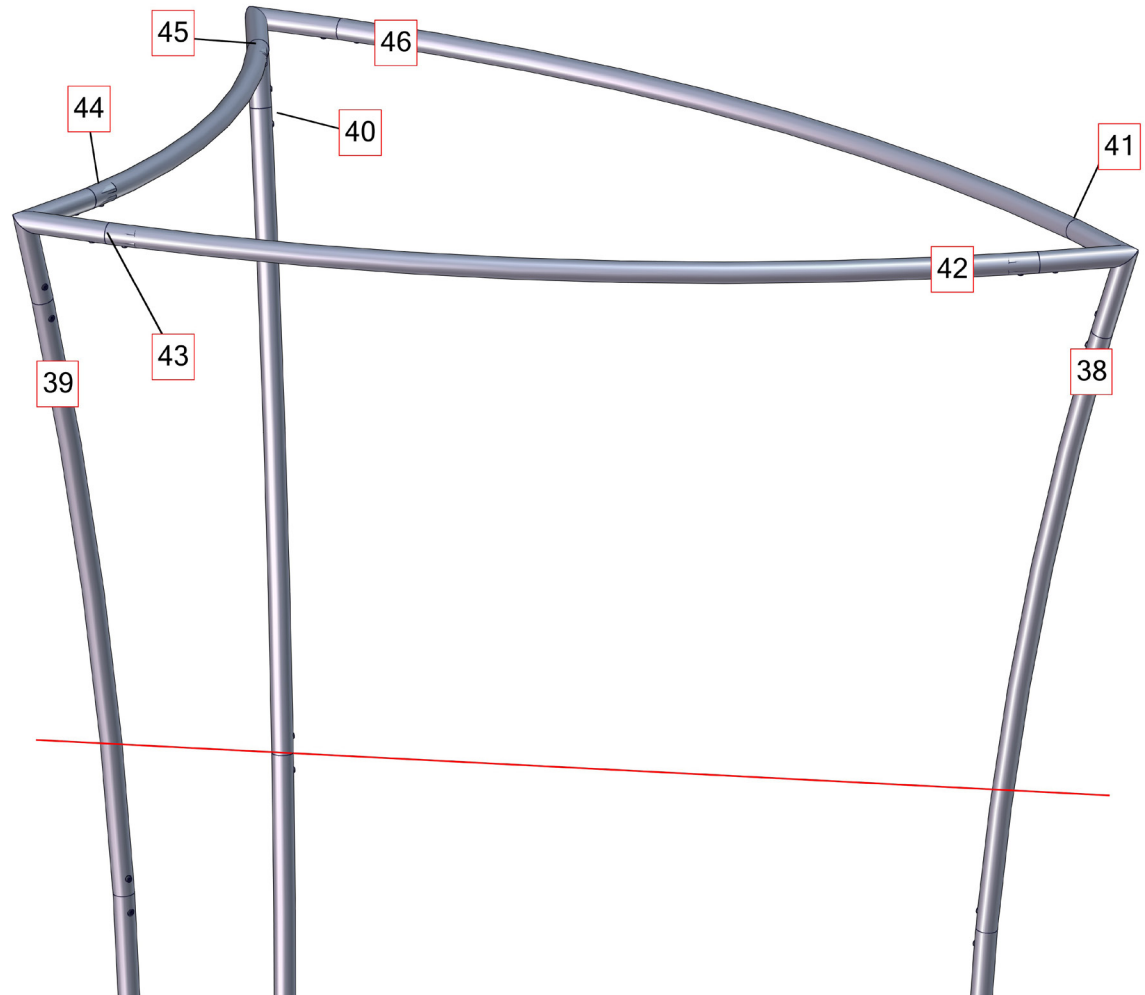
**FRAME A**



# Labeling Diagram

**TOWER-02**

**FRAME A**

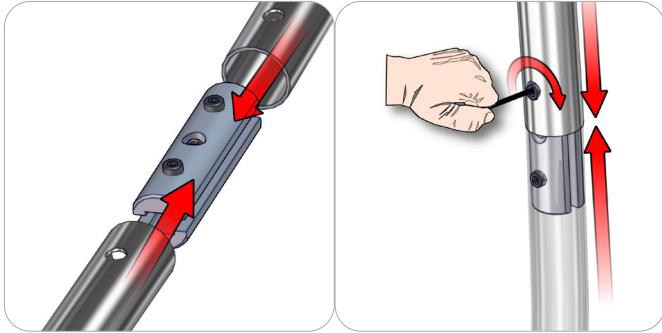




# Connection Methods

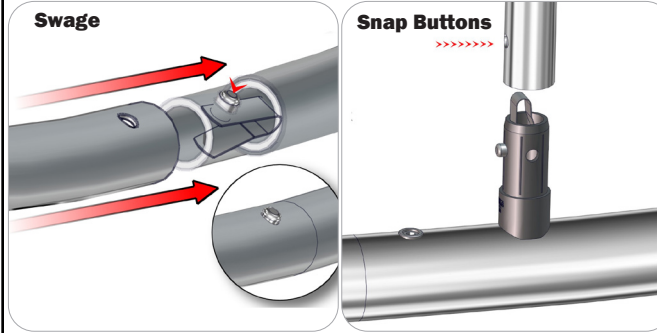
Formulate® structures use a number of different yet simple connection methods. Your kit will include one or more of the connection methods shown below. Steps within the Kit Assembly will reference a specific method for each connection point.

## Connection Method 1: ES30 / ES50 / ES75



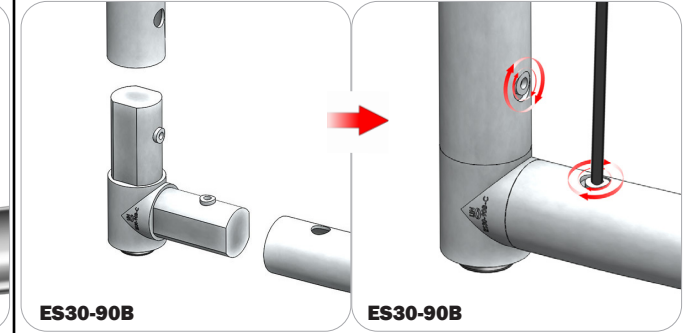
Compress the unlocked connector and slide one tube onto each end. Lock both screws carefully using your allen key tool. Be sure to lock securely, but do not overtighten.

## Connection Method 2: Snap Buttons & Swage



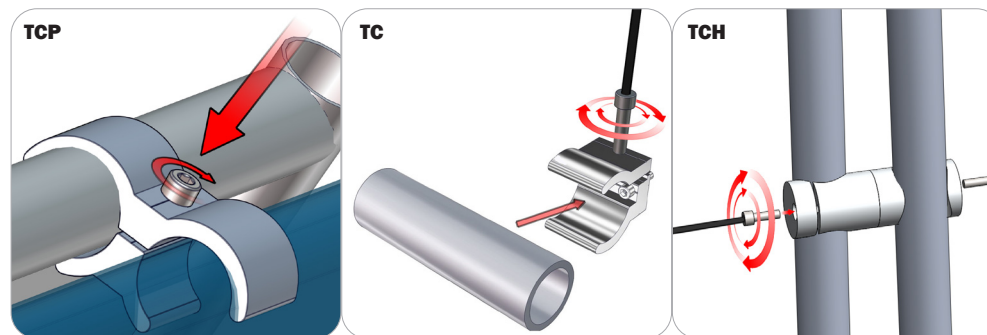
Locate the snap button on the connector or swage tube. Locate the hole on the corresponding tube. Press the snap button with your thumb and slide the tube and connector together so that the snap button snaps fully into the lock hole. To disassemble, press the snap button and pull apart.

## Connection Method 3: ES30-90B / ES30-I / ES30-C



Compress one unlocked end of the connector and slide it through one tube end. Compress the other end of the connector and slide the second tube on. Lock both screws carefully using your allen key tool. Be sure to lock securely, but do not overtighten.

## Connection Method 4: Tube Clamps



Be sure to fully assemble all frames before using clamps. With the clamp unlocked, place one tube of the first frame into the mouth of the clamp. Place the second tube (if applicable) into the second mouth of the clamp. With both frame's tubes in the clamp, be sure to lock securely, but do not overtighten.

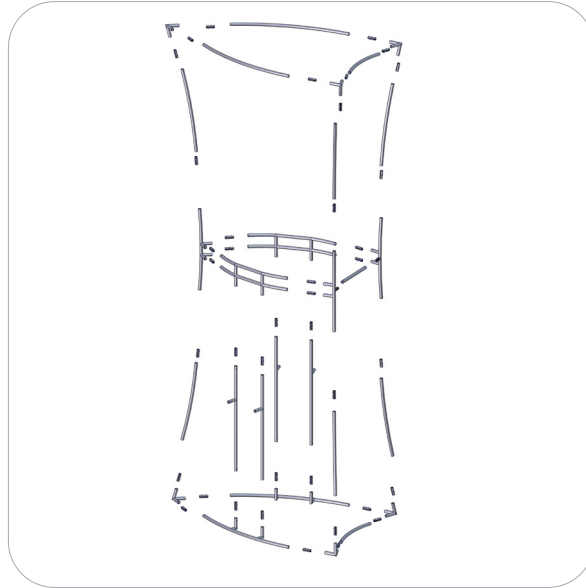
# Kit Assembly

## Step by Step

### Step 1.

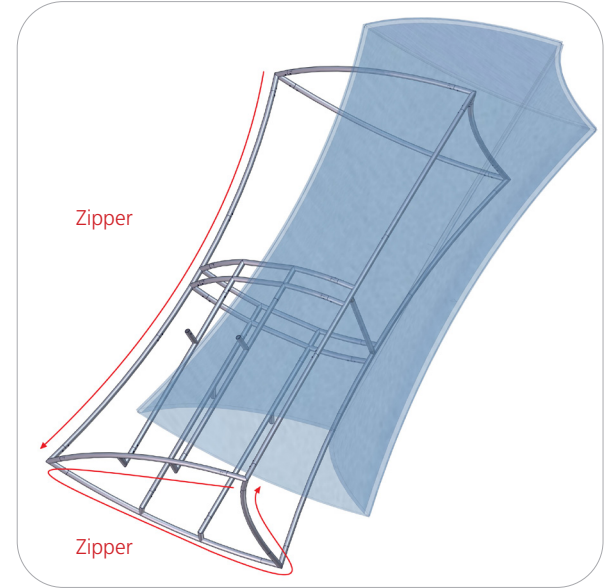
Gather the components necessary for assembling Frame A. Assemble in the order the Labeling Diagram instructs.

Refer to Connection Methods 1 and 2 for additional information.



### Step 2.

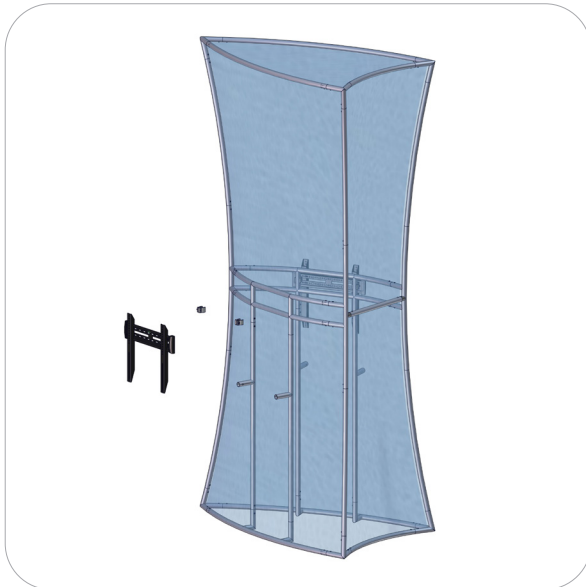
With the frame laying flat on the floor, locate your pillowcase graphic. With the pillowcase unzipped, encase the frames and zip along the side and bottom. Tubes 17 and 18 will protrude through the graphic for attaching the shelves.



### Step 3.

Attach your monitor mounts through the graphic to the top center tubes of both sides of the frame.

Refer to Connection Method 4 and Monitor Bracket Instruction pages for additional information.



### Step 4.

Attach your shelves to the top center of tubes 17 and 18 with the provided thumb screws.

Setup Complete.

