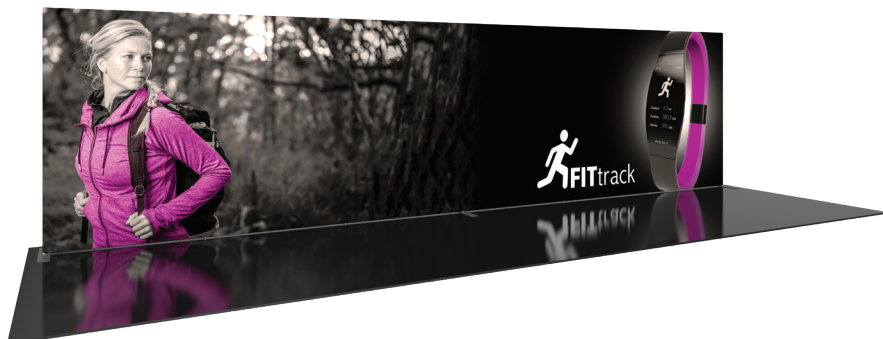


# Formulate Designer Series 30' Backwall - Kit 01

## FMLT-DS-30-01

Formulate® Designer Series 30ft displays have unique stylistic features and shapes, are portable and easy to assemble. The aluminum tube frame features snap-buttons and/or spigot connections and zipper pillowcase fabric graphics. All displays come in portable, wheeled transit cases. Simply pull the pillowcase fabric graphic(s) over the frame and zip.



## features and benefits:

- Premium aluminum tube frames with snap button assembly
- Straight shaped frame
- Easy to store and ship
- Quick to set up
- Weighted feet for added stability
- Kit includes: one frame and one zipper pillowcase fabric graphic
- Frame can also be configured\* as a standard 10' and 20' backwall (\*requires additional 10' and 20' graphic purchase)
- Lifetime limited hardware warranty against manufacturer defects

## dimensions:

### Hardware

Assembled unit:  
352.82" w x 91.97" h x 25.59" d  
8962mm(w) x 2336mm(h) x 650mm(d)

Approximate weight with cases:  
152 lbs / 69 kg

### Shipping

Packing case(s):  
2 OCE-2 Cases

Shipping dimensions:  
OCE-2: Expandable case length (l) may vary  
40" - 66" l x 18" h x 18" d  
1016mm-1677mm(l) x 458mm(h) x 458mm(d)

Approximate total shipping weight  
(includes cases & graphics):  
183 lbs / 83 kgs

### Graphic

Refer to related graphic template for more information.

Visit:  
[www.exhibitors-handbook.com/graphic-templates](http://www.exhibitors-handbook.com/graphic-templates)

## additional information:

Graphic material:  
dye-sublimation zipper pillowcase fabric

We are continually improving and modifying our product range and reserve the right to vary the specifications without prior notice. All dimensions and weights quoted are approximate and we accept no responsibility for variance. E&OE. See Graphic Templates for graphic bleed specifications.

# Included In Your Kit

Tools, Components, & Connectors



HEX KEY SET x1



TC-30-90T x2

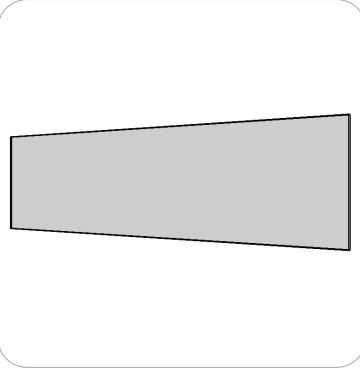


PLT-BP-LN114-S2-650 x3



LN114-SCRW x3

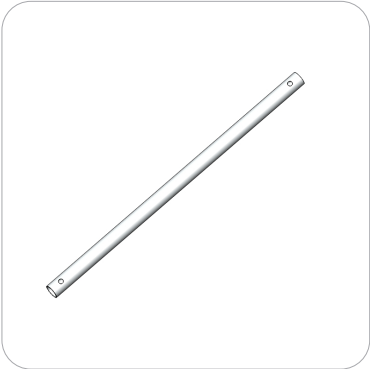
Graphics



FMLT-DS-30-01-G x1

# Included In Your Kit

Tubes



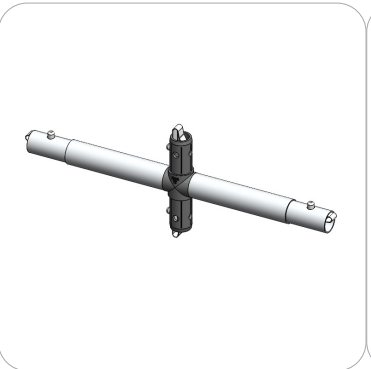
WS10-T1 x12



WS10-T2 x18



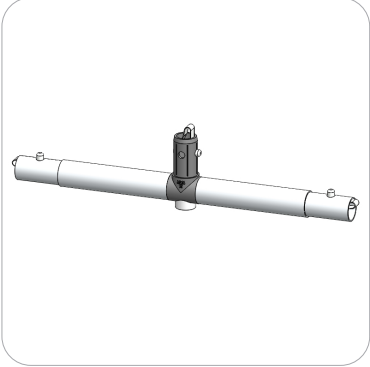
WS10-T4 x3



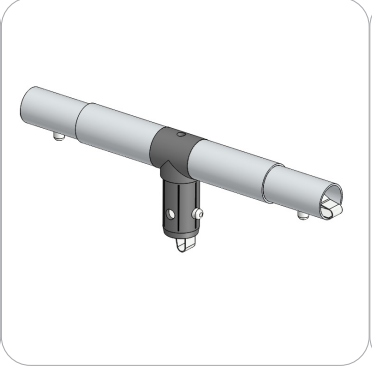
WS10-T5 x3



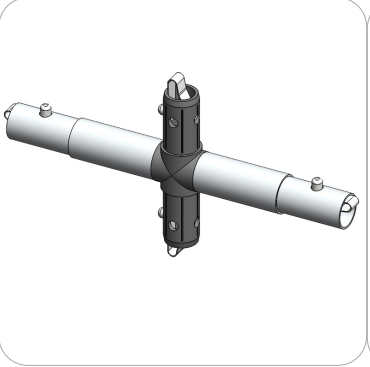
WS10-T6 x2



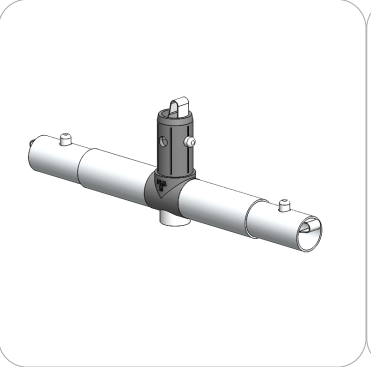
WS10-T7 x2



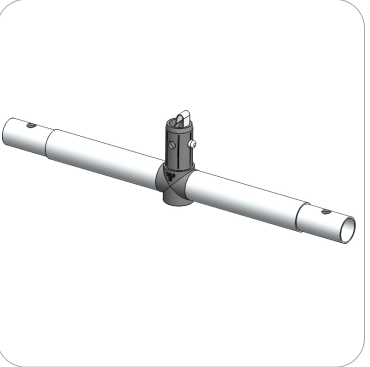
WV20-01-T1 x2



WV20-01-T2 x2



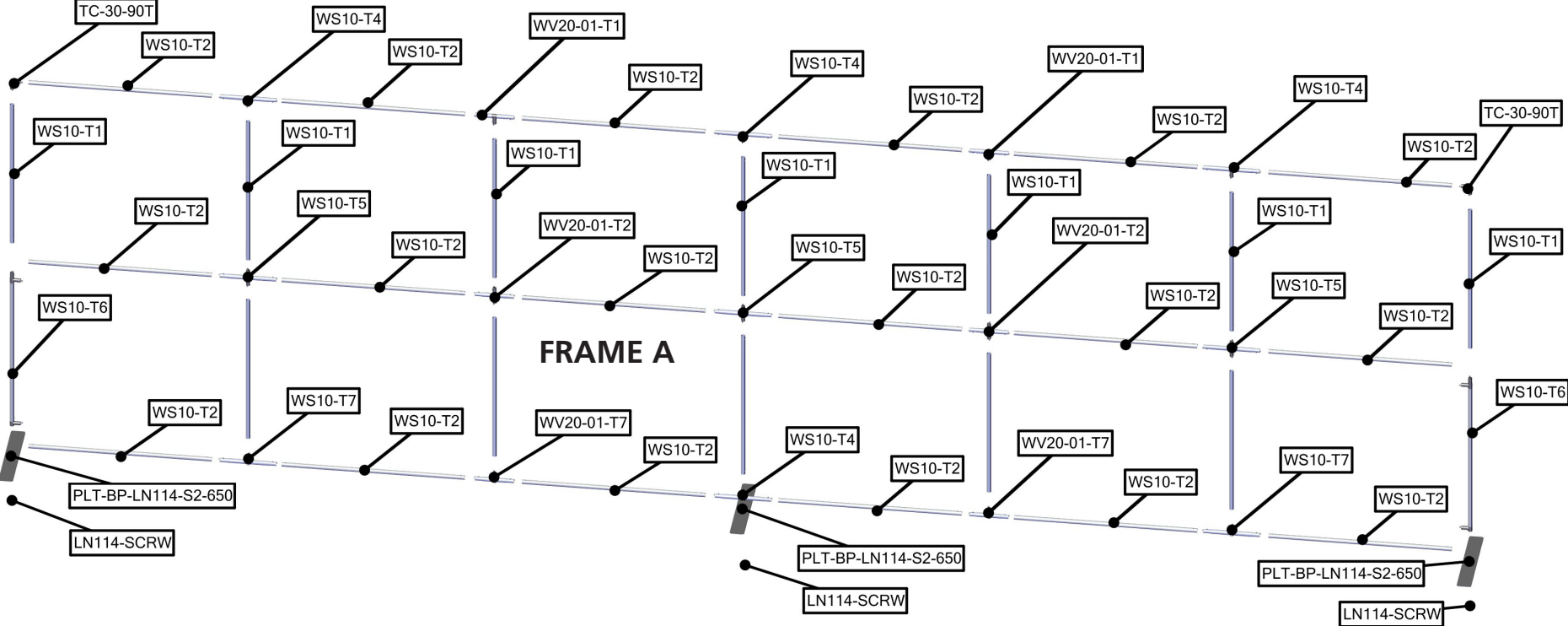
WV20-01-T7 x2



WS10-T4-B x1

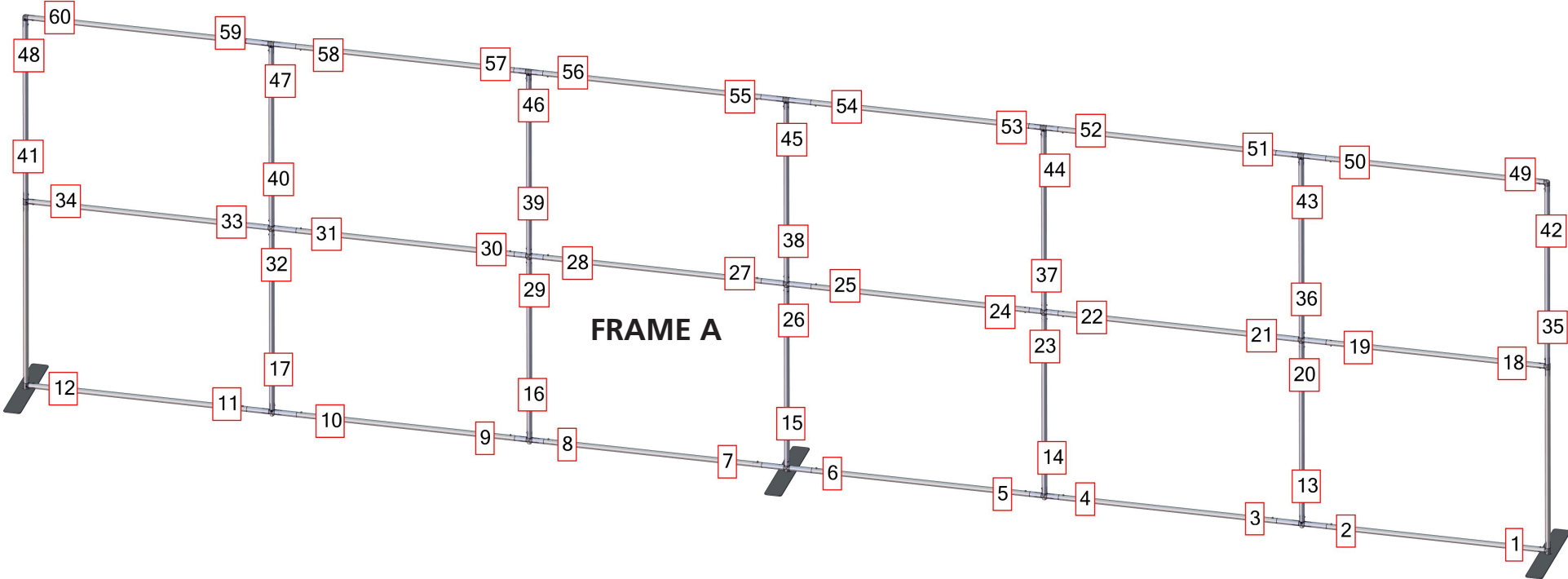
# Exploded View

FMLT-DS-30-01



# Labeling Diagram

FMLT-DS-30-01



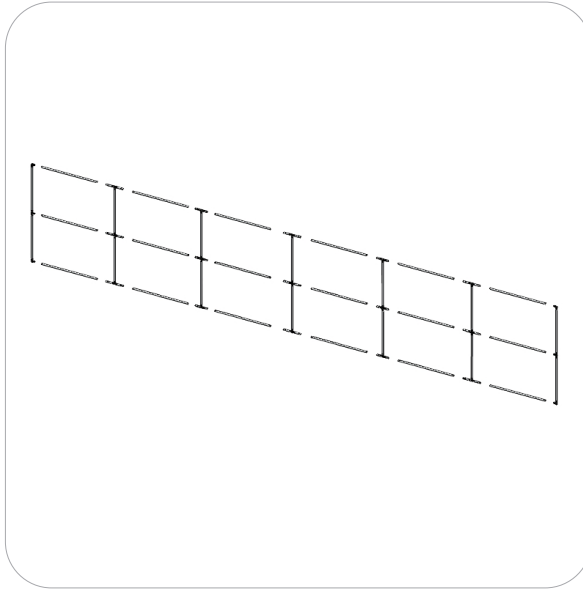
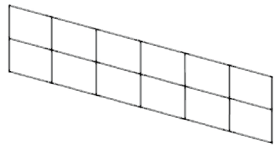
# Kit Assembly

## Step by Step:

### Step 1.

Assemble Frame A according to the Labeling Diagram.

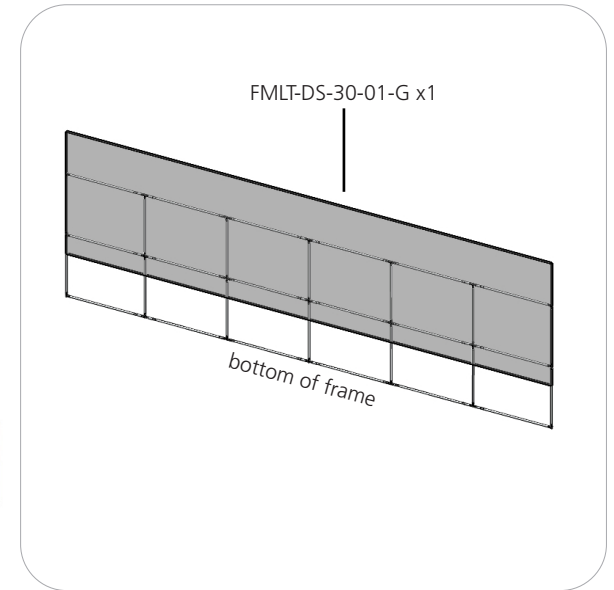
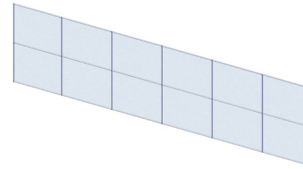
Please reference Connection Methods 1 & 2 for more details.



### Step 2.

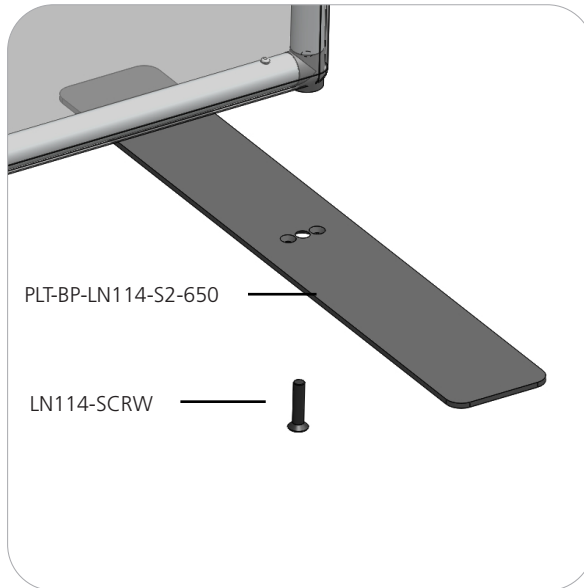
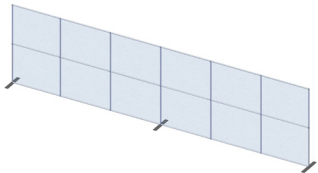
Apply FMLT-DS-30-01-G graphic to the frame by pulling the pillowcase over the top.

Zipper located to the bottom of the Graphic.



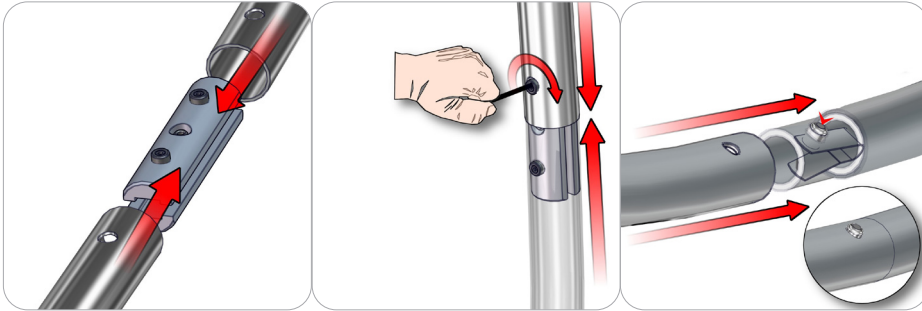
### Step 3.

Apply the PLT-BP-LN114-S2-650 to the Left, Right, and center of Frame A using your hex key tool. See image right.



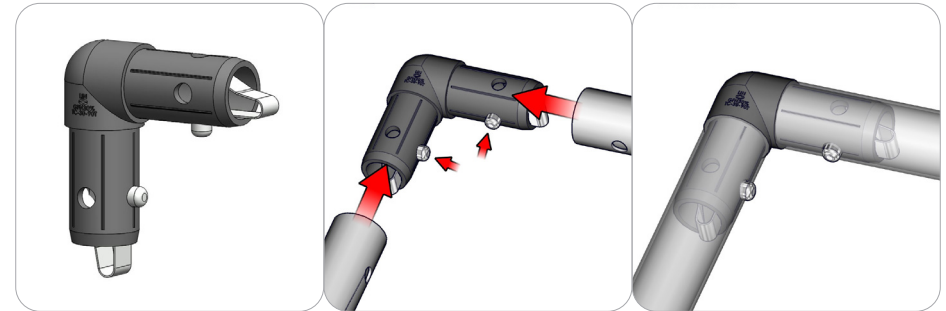
# Connection Methods

## Connection Method 1: SNAP BUTTONS



For spigot connections, compress the unlocked connector and slide into the tube lock access hole. Lock both screws carefully using your allen key tool. Be sure to lock securely, but do not over tighten. For snap button connections, locate the snap button on the connector or swage tube. Locate the hole on the corresponding tube. Press the snap button with your thumb and slide the tube and connector together so that the snap button snaps fully into the lock hole. To disassemble, press the snap button and pull apart.

## Connection Method 2: TC-30-90T



Take the plastic connector and make sure the snap buttons are in proper position for the frame tube holes. Simply press the snap button with your thumb and carefully slide the tube onto the connector. The snap button should pop through. Some twisting may be necessary to assure the snap button has popped all the way through the tube hole. Do not force the connection and be careful with the tube edges, they may be sharp.