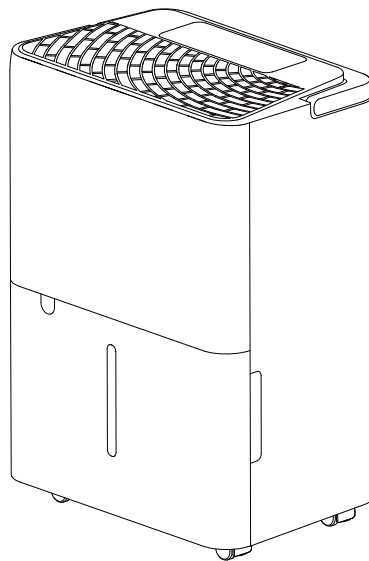


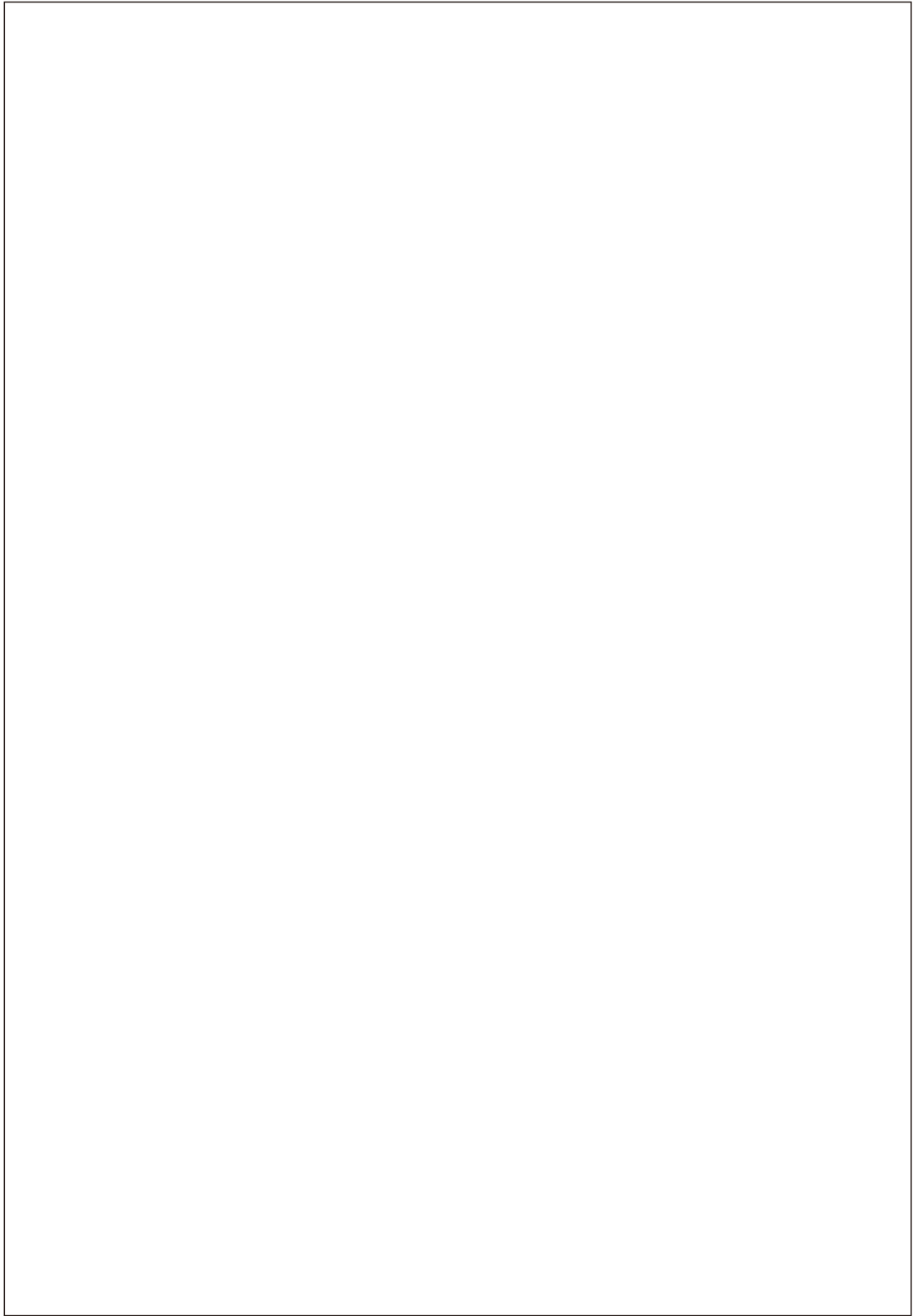
Dura *Comfort* **DEHUMIDIFIER**

INSTRUCTION USER'S MANUAL



MODEL: DH08M

Thank you for selecting our quality appliance. Please be sure to read this user manual carefully before using. Any question, please contact the professional service for help.



Warnings & Precautions

When using electrical appliances, basic safety precautions should always be followed including the following:

READ ALL INSTRUCTIONS BEFORE USE

1. To disconnect, turn off the unit and then unplug the power cord.
2. Close supervision is necessary if the appliance is used by or near children.
3. Do not attempt to repair or replace any part of this appliance unless it is specifically recommended in this manual. Contact dealer, seller, a qualified electrician, or an authorized service center to repair the product.
4. Do not immerse cord, plug, or the appliance in water or other liquid.
5. Do not operate any appliance with a damaged cord or plug or after the appliance malfunctions, or has been dropped or damaged in any manner. See warranty to return for examination, repair, or electrical or mechanical adjustment. Appliance serviced only by authorized agent.
6. The use of accessory attachments (not recommended or sold by the manufacturer) may cause fire, electric shock or injury.
7. Do not use outdoors.
9. Do not use appliance for anything other than intended use.
10. Always place this unit on a solid and level surface.
11. Do not cover the air inlet or vents.
12. Do not use extension cord. This appliance is for household use only.
13. This unit must be connected to a grounded power supply.
14. Do not place the appliance near any heat source.
15. Do not use this appliance near flammable gases or liquids or other combustibles.
16. Make sure the power cord is plugged firmly and completely into the outlet.
17. Be sure to remove all packaging material before using the appliance.
18. Immediately unplug the product if the appliance is making unusual sounds or is emitting smoke or odor.
19. Always turn off and unplug the appliance if not used for extended period of time.

SAVE THESE INSTRUCTIONS

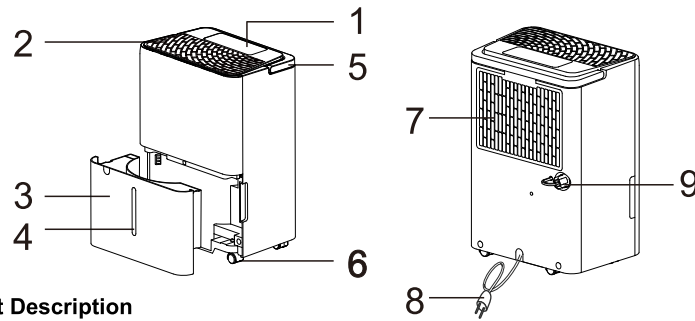
SOME NOTIONS ON HUMIDITY

Air always contains a certain amount of water in the form of vapour. This determines the level of humidity in an atmosphere. The capacity of the air to hold water vapour increases with temperature.

This is why in our homes, as soon as the temperature decreases, the vapour contained in the air condenses, as is evident on the colder surfaces in the room, such as the windows, walls etc. The purpose of a dehumidifier is to remove the excess moisture from the air, avoiding the damage caused by condensation.

Experts have established that the optimum environmental conditions for our well being and for the home are obtained between 40% and 60% relative humidity. With very low temperatures, you are recommended to heat the room even minimally. This considerably increases the dehumidifying power of the appliance. With heating, the condensation formed by the water vapour on windows and other cold surfaces evaporates into the air to be collected by the dehumidifier. Air leaving the dehumidifier is usually about 1°C-2°C warmer than room temperature.

DESCRIPTION



Component Description

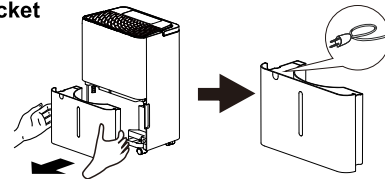
1. Control panel	6. Castor
2. Air outlet	7. Air intake grille
3. Bucket	8. Power cord
4. Water level view window	9. Drain port
5. Handle	

Note:



All the illustrations in this manual are for explanatory purposes only. your appliance may be slightly different.

Before use, remove the accessory from the bucket

- Remove the bucket from appliance.
- Take out of the the plug, and other accessories.
- Correctly put back the bucket into the appliance.



The accessories are include:

	Chip of bucket	1 set
	Drain pipe	1 set

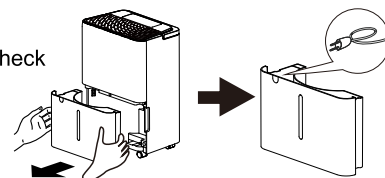
Note: All the illustrations in this manual are for explanatory purposes only. your appliance may be slightly different.

Be sure all accessories are removed from the packing and bucket before use.

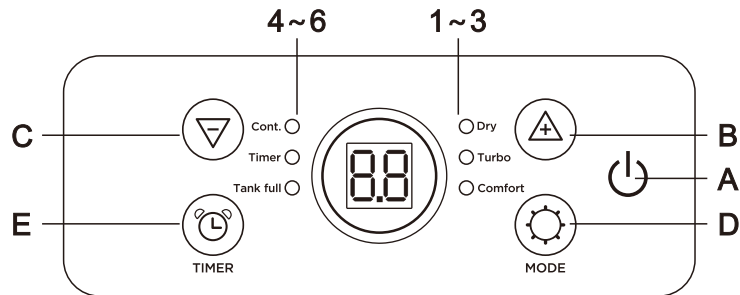
Installation

A: Take out the power cord from bucket.

- Take out the bucket, remove the power cord , check there is any other accessories and take out.
- Install the chip on the bucket.



DESCRIPTION OF THE DISPLAY SCREEN AND CONTROL PANEL



A. On / Off button	1. Dry symbol	4. Continuous symbol
B. Increase button	2. Turbo symbol	5. Timer symbol
C. Decrease button	3. Comfort symbol	6. Tank full symbol
D. Mode button		
E. Timer button		



- "  " button

- On / off power supply, used to control the start-up or shut down the appliance.


- **Decrease / Increase button**

- Press " + " / " - " to select the indoor humidity level you expect to achieve, or set the time.

- "  " button:


Press the "  " button to turn on the appliance, and press the "  " button to choose different mode.

- *** Dry mode**


Press the "  " button until the " DRY " symbol is lights.

- Press the " + " or " - " to choose the humidity desired, humidity adjustable range is 35%RH-80%RH. The screen will display the setting humidity, and after few seconds, turn to display the ambient humidity.
- When the ambient humidity lower than setting humidity, the compressor stop running, and after few minutes the fan stop running.
- The fan speed is low and cannot be adjusted.


*** Turbo mode**

- Press the " " button until the "Turbo" symbol is lights, the setting humidity is 35%RH, press the "+" or "-" to choose the humidity desired.
- The screen will display the setting humidity, and after 2 seconds, turn to display the ambient humidity.
- The fan speed is high and cannot be adjusted.

*** Comfort mode**

- Press the " " button until the "Comfort" indicator is lights, the appliance will setting humidity according the ambient temperature. So the humidity can not be adjusted and show the ambient humidity.
- The fan speed is low and can not be adjusted.
- When active the comfort mode, the screen light will go to dim , after 1 minute later the screen will turn off.
- Press other button to check the status, the screen will light again and after 1 minute later will turn off.



*** Continuous mode**

- Press the " " button until the "Cont." indicator is lights, the setting humidity is 15%RH and can not be adjusted, the unit will continuously run.
- The fan speed is low and can not be adjusted.

•  **button**

This timer can be used to delay the appliance start-up or shutdown, this avoids wasting electricity by optimizing operating periods.

*** Programming start-up**

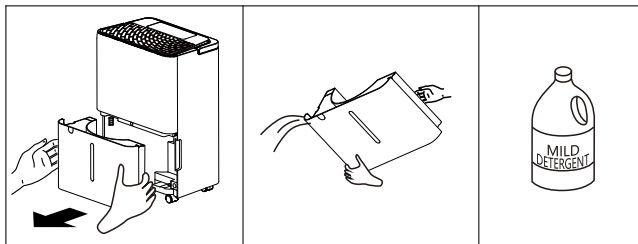
- Turn on the appliance, choose the mode you want, for example Dry mode, 65%RH. Turn off the appliance.
- Press the " " button , the screen starts to flash, press the " + " or " - " to adjust the set time from 0.5-24 hours.
- In 5 seconds without the operation, the timer start function, then the "Timer" symbol lights.
- The control will count down the time remaining until start-up.
- Press the " " button again to cancel the Timer, and the "Timer " symbol disappear.

* Programming shut down

- When the appliance is running, press the "⏸" button, the screen starts to flash, press the "+" or "-" to adjust the set time from 0.5-24 hours.
- In 5 seconds without the operation, the timer start function, then the "Timer" symbol lights.
- Press the "⏸" button again to cancel the Timer, and the "Timer" symbol disappears.

● Alarm of bucket full

- When bucket is full, the compressor will shut off, the fan will stop for a few minutes, and make a beeping noise, "Tank Full" symbol is flashing.
- The unit will not run again until the bucket is emptied and properly placed back inside the unit.
- The bucket should be cleaned every week to prevent the growth of mold, mildew and bacteria. Use a mild detergent to clean. Once clean, completely dry the bucket and place it back inside unit.



Note: Hold the bucket with both hands when emptying.

Note: When the bucket is full or removed from the unit, the compressor will turn off but the fan will continue to run for a few minutes. This is completely normal. The unit will not be removing moisture from the air at this time.

Note: During operation, it is normal for the unit to exhaust warm air from the side of the unit.

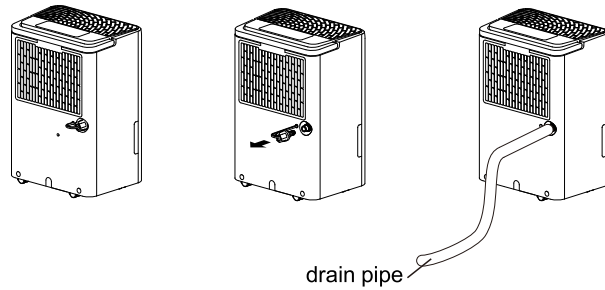
Caution: Do not place the bucket on the floor when it is full as it is uneven on the bottom and water may spill.

● Continuous drain

Connect the drain pipe on the back of unit, then the unit can continuous run without clean the bucket.

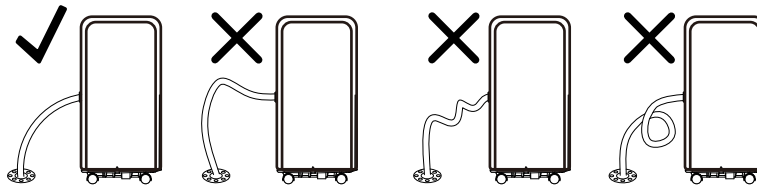
- 1) Put the unit on level floor, unscrew the cap on the back of unit;
- 2) Install the connector of drain and gasket;
- 3) Install the drain pipe on connector;
- 4) Press "⏻" button to run the unit.

Note: If no need the function of continuous drain, please install the cap on the drain hole back of unit, then the water will flow into bucket.



Note: Please install the drain pipe follow below picture.

Please install the drain pipe correctly, or the water cannot drain from the pipe.



Notice:

If the unit put on the un-level ground or not correctly install the drain pipe, the water will full the bucket and stop run.

If that happened, please check the ground is whether horizon, and the drain pipe is correctly installed.

At the same time, the bucket need to be install correctly.

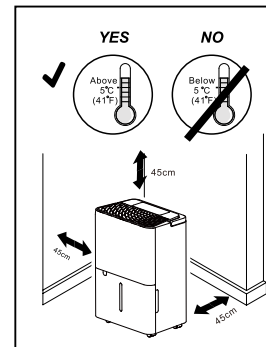
- **AUTOMATIC DEFROST**

When frost builds up on the evaporator coils, the compressor will stop and the fan will continue to run until the frost disappears. When the coils are completely defrosted, the compressor will automatically restart and dehumidify will resume.

Location requirements

The unit operating in a basement will have little no effect in drying out an adjacent enclosed storage area, such as a closet, unless there is adequate circulation of air in and out of the area.

1. Do not use outdoors.
2. This appliance is intended for indoor use only. Place the appliance on a smooth, level floor surface that is strong enough to support the unit with a full bucket of water.
3. Allow at least 18"(45cm) of around and above space away from the wall for efficient working.
4. Place the appliance in an area where the temperature will not fall 5°C (41°F). Use the dehumidifier in cooking, laundry, bathing and dish-washing areas that have excessive moisture.
5. Place the dehumidifier away from a clothes dryer.
6. Use the dehumidifier in a basement to help prevent moisture damage.
7. The dehumidifier must be operated in an enclosed area to be most effective ,close all doors, windows and other outside openings to the room.
8. Do not block the air inlet or outlet of the appliance. Reduced air flow will result in poor performance and could damage the unit.



CLEAN AND MAINTENANCE

Before cleaning or maintenance, turn the appliance off by pressing the "POWER" button on the control panel, wait for a few minutes then unplug from the mains socket.

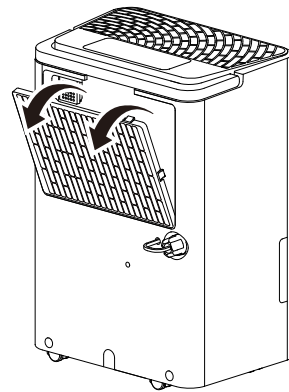
CLEANING THE CABINET

You should clean the appliance with a slightly damp cloth then dry with a dry cloth.

- Never wash the appliance with water, it could be dangerous.
- Never use petrol, alcohol or solvents to clean the appliance.
- Never spray insecticide liquids or similar.

CLEANING THE FILTER

- To keep your appliance working efficiently, you should clean the filter every month of operation.
- The filter can take out like fig.
- To avoid possible cuts, avoid contacting the metal parts of the appliance when removing or re-installing the filter. It can result in the risk of personal injury.
- Use a vacuum cleaner to remove dust accumulations from the filter. If it is very dirty, immerse in warm water and rinse a number of times. The water should never be hotter than 40°C (104°F). After washing, leave the filter to dry then attach the intake grille to the appliance.



END OF SEASON OPERATIONS

- To unplug from the mains socket, empty the bucket, remove the cap.
- Run off all water left inside the appliance. When all the water has been drained, put the cap back in place.
- Clean the filter and dry thoroughly before putting back.
- Cover the appliance prevent from dust.
- Store the appliance upright in a dry location.

START OF SEASON CHECKS

Make sure the power cable and plug are undamaged and the earth system is efficient. Follow the installation instructions precisely.

TROUBLESHOOTING

Occasionally, you may encounter some problems that are of a minor nature and a service call may not be necessary. Use this troubleshooting guide to identify possible problems you may be experiencing

Problem	Possible Causes	Solutions
Dehumidifier does not start	The dehumidifier is unplugged.	Make sure the dehumidifier's plug is pushed completely into the outlet.
	The fuse is blown/circuit breaker is tripped.	Check the house fuse/circuit breaker box and replace fuse or reset breaker.
	Dehumidifier has reached its present level or the bucket is full.	The dehumidifier automatically turns off when either condition occurs. Change to a lower setting or empty the water bucket and replace properly.
	Bucket is not in the proper position.	The bucket must be in place and securely seated for the dehumidifier to operate.
	Power Failure.	There is a protective time delay (up to 3 min.) to prevent trip— ping of the compressor overload. For this reason, the unit may not start normal dehumidify for 3 min after it is powered back on.
Dehumidifier does not dry the air as it should	Not enough time allowed for unit to remove moisture.	When first installed, allow at least 24 hours to maintain the desired dryness.
	Airflow is restricted.	Make sure there are no curtains, blinds, or furniture blocking the front or back of the dehumidifier. See the CHOOSING A LOCATION section.
	Dirty filter.	See the CLEAN FILTER section.
	The Humidity Control may not be set low enough.	For drier air, press the “–” button to lower the percent humidity desired in the room, or set the dehumidifier to Cont. for maximum dehumidify.
	Doors and windows may not be closed tightly.	Check that all doors, windows, and other openings are securely closed.
	Clothes dryer may be blowing moist air into the room.	Install the dehumidifier away from the dryer. The dryer should be vented outside.

	Room temperature is too low.	Moisture removal is best at higher room temperatures. Lower room temperatures will reduce the moisture removal rate. This model is designed to operate at temperatures above 5°C(41°F).
Appliance runs too long	The area is too large	The capacity of the appliance can not meet the area of the room
	Doors and windows are open	Close the door and window
Frost appears on heat-exchanger	Appliance run recently or the room temperature is too low	It is normal, frost usually disappear in 60 min
Fan noise	The air is passing through the appliance	This is normal
Water on the floor	The drain connection may be aging or loose	Check the drain connection and the appliance is placed level
	The drain pipe is connected, but the water is not drained.	If use the bucket, remove the drain pipe and put back the drain cover; or install the drain pipe correctly

If the following error code appears, contact the after-sales service department for inspection and repair.

CODE	DESCRIPTION
EH	Humidity sensor failure
E2	Temperature sensor failure

Strictest operation environment: 5°C~32°C (41°F~90°F) ,30%RH~90%RH.

WARRANTY

Dear Customer

Thank you for your purchase and for your confidence in our company. This product meets applicable safety requirements and has undergone stringent testing during manufacturing process.

However, should there occur a defect, the product or its defective part(s) (excluding accessories and consumables) will be repaired free of charge (labour and parts) within a limited period. If you have any questions, please contact us, we will provide assistance as soon as possible.

Warranty period:

Labor: 12 Months from the Date of purchase.

Parts: 12 Months from the Date of purchase.

THIS LIMITED WARRANTY DOES NOT APPLY TO:

1. Damage caused by transportation or handling.
2. Damage caused to the product by accident, vermin, lightning, winds, fire, floods, or acts of God.
3. Damages caused by operating the product in a corrosive atmosphere.
4. Repairs when your DuraComfort product is used in other than normal, single-family household use or contrary to the instructions described in the product User's Guide.
5. Damage resulting from accident, alteration, misuse, abuse, or improper installation, repair, or maintenance. Improper repair includes the use of parts not approved or specified by DuraComfort.
6. Normal maintenance as described in the User's Guide, such as cleaning or replacing filters, cleaning coils, etc.
7. Use of accessories or components that are not compatible with this product.
8. Products with altered or removed serial numbers.
9. Changes in the appearance of the product that do not affect product performance.

HELP

Customer service: support@duracomfort-life.com
Shenzhen TCL Dura Electronic Technology Co., Ltd.
Room 11, 1st Floor, Block A, TCL Building, No.006, Gaoxin South 1st
Road, Gaoxin Zone Community, Yuehai Subdi strict, Nanshan District,
Shenzhen, Guangdong, China

Dura *Comfort*

FOR MORE HELP
Customer service:
support@duracomfort-life.com