



C A B I N E T R Y

A PANDA KITCHEN AND BATH COMPANY

PANDAKITCHEN.COM

20
24

ABOUT US

In 1998, the Huang family purchased their first home in the U.S. and decided to visit one of the local remodeling companies to purchase a new Kitchen. After finding that their remodeling plans were out of reach, they decided to use their decades of experience in the construction industry to find a way to make the buying of a new Kitchen more affordable. By teaming up with the manufacturer directly, they found a way to save on project costs by up to 70% and, therefore, the family found a way to pass on those savings to the local consumer. After two years of preparation, Panda Kitchen and Bath Expo Center was born. Between 2002 and 2004, our aggressive prices and significant savings paid off with our customers, which led to our rapid growth into new territories with over 100,000 square feet of inventory. By 2006, Panda Kitchen and Bath had opened multiple distribution centers throughout the U.S., growing to over 500,000 square feet of stock. We also began our expansion into the Caribbean.

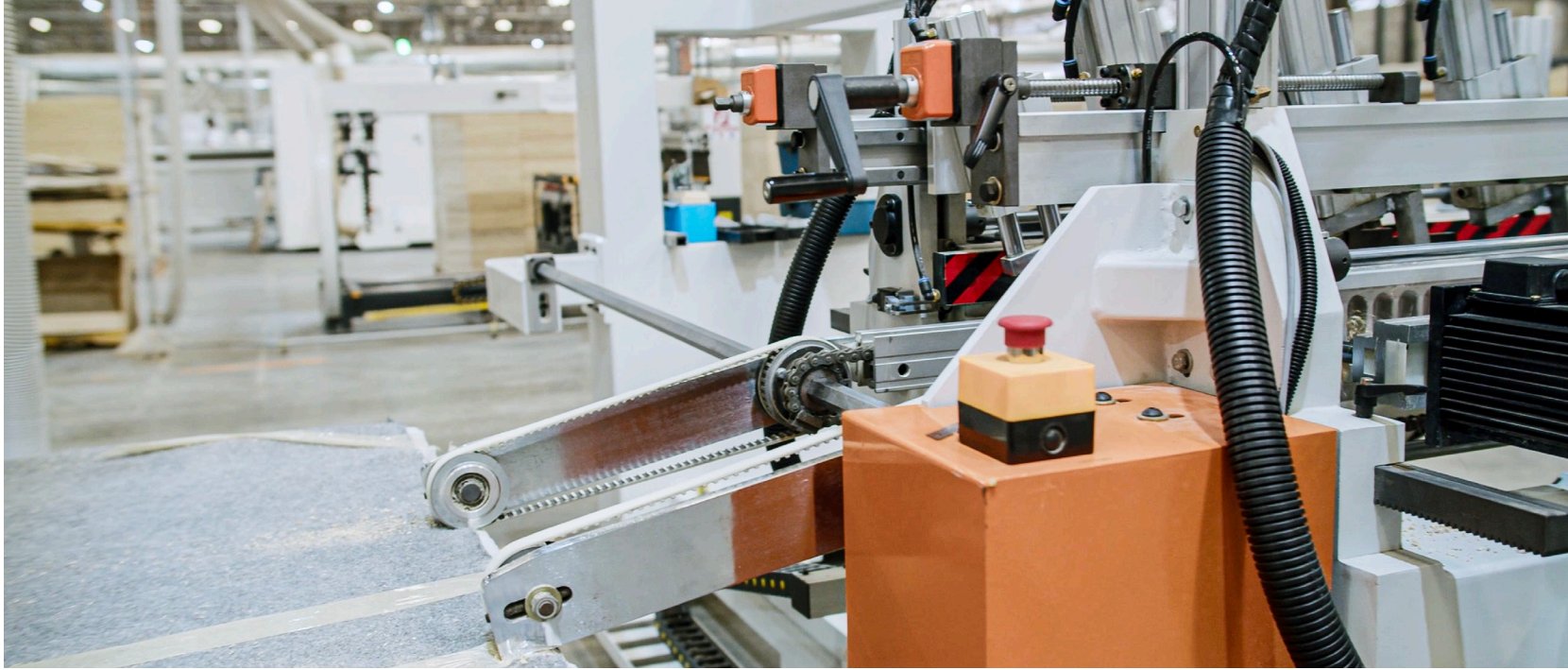
Today, Panda Kitchen & Bath operates multiple manufacturing plants in Thailand and Vietnam along with over 1 million square feet of warehousing space throughout the U.S. We also have more than 2,000 workers and support staff spread out over two continents. As worldwide leaders in the Ready-To-Assemble (RTA) category, we also offer delivery options to our U.S., Caribbean, and North/South American customers.

Even with our rapid growth, it's essential to understand that our success hasn't only come from our sales and distribution centers. It also came from our many years of charitable and partnership opportunities. Some examples are the Ronald McDonald House, Harvest Bible Chapel, St Jude Hospital, SOBE Wine & Food Festival, the Florida Panthers, and our three (3) time NBA Champions, the Miami Heat, to name a few.

In conclusion, our philosophy is quite simple. By owning and operating multiple manufacturing plants, we can better manage COST and QUALITY and, in turn, pass on those benefits to all of our customers. This means that our customers genuinely are saving by buying "Factory Direct."

Franchising opportunities now available.







**SINGLE SHAKER
WHITE**

C7070

**SINGLE SHAKER
GREY**

C7072

**SINGLE SHAKER
ESPRESSO**

C7081

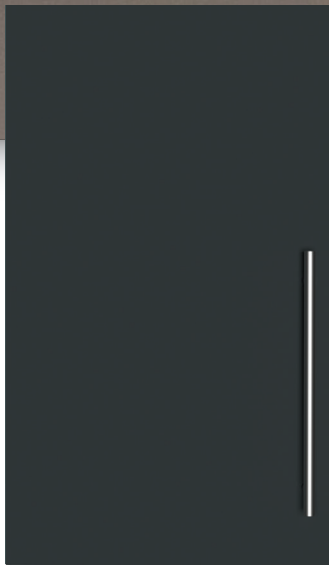


Our single shaker cabinets show how simple clean lines can create an attractive modern look. The ultimate in flexibility and modern styling lends itself to nearly any décor.



Four new, clean, timeless flat panel doors for an aesthetically simplified and versatile look.

The modern flat style door, with its neutral minimalist appeal, creates a lasting look for the ages.



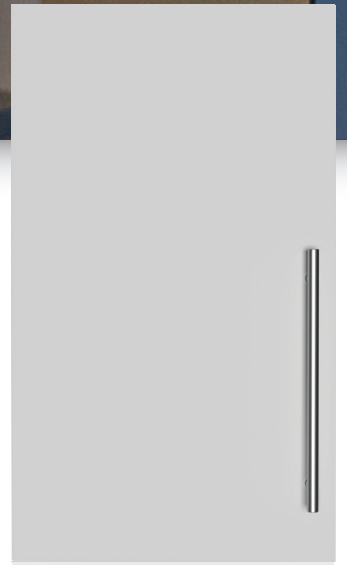
**MANHATTAN
SHADOW GREY**
C1878



**MANHATTAN
OLIVE GREEN**
C1841



**MANHATTAN
COBALT BLUE**
C1838



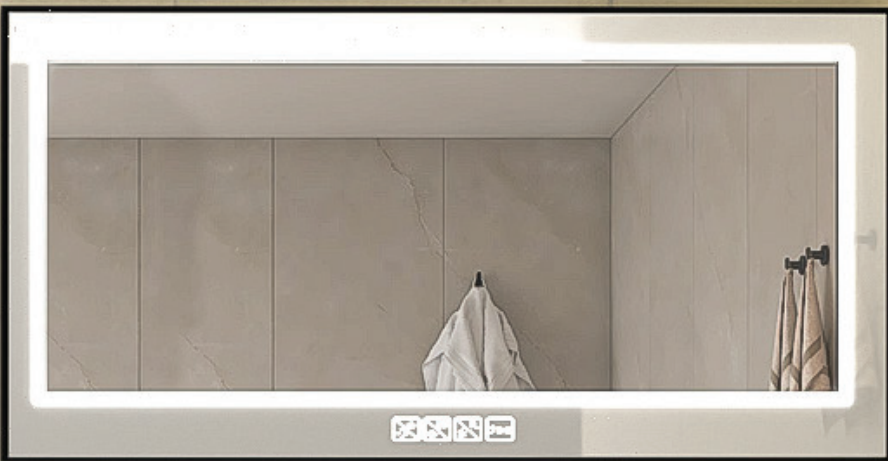
**MANHATTAN
SNOW WHITE**
C1870



Available in 24-36 Inches



Available in 36-54 inches



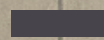
SINGLE SHAKER VANITIES



GREY



WHITE



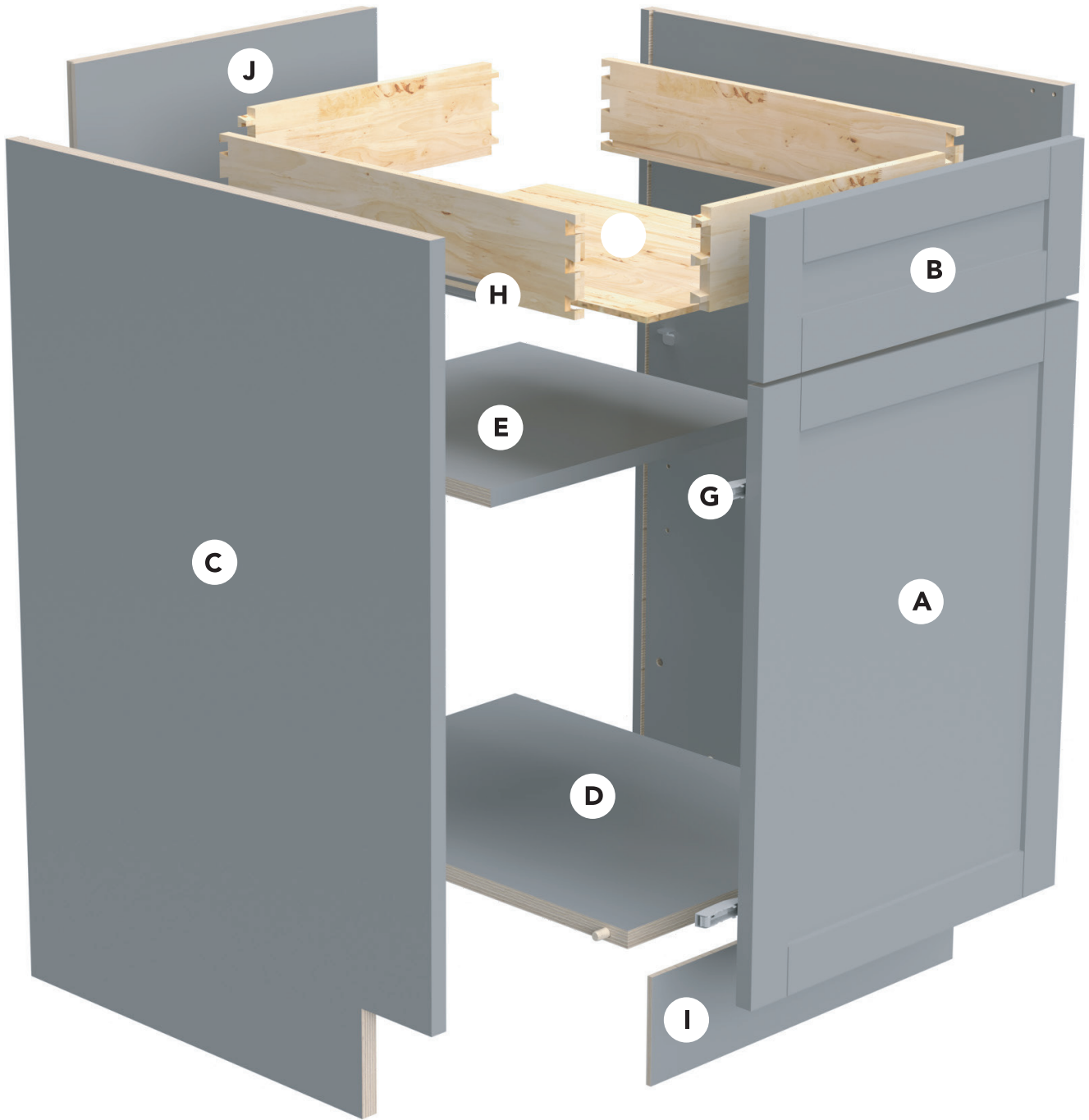
ESPRESSO



Available in 48-72 inches



Available in 60-90 inches



- A** Door – ¾" solid wood
- B** Drawer Face – ¾" solid wood
- C** Cabinet side panel – Panel made of 11 layers ¾" thickness plywood
- D** Cabinet bottom & top panel -- Panel made of 11 layers ¾" thickness plywood
- E** Shelves – Adjustable shelves ¾" thickness made of 11 layers plywood

- F** Drawer box - ¾" thick solid wood with dovetail construction.
- G** Hinges – 105 degree stainless steel Soft-close hinges
- H** Rails - 20" full extension under-mount soft-close rails
- I** Toe kick -- Made of 3/8" thick of plywood
- J** Cabinet back panel – 3/8" panel with ¾" frame.

*Above description varies depending on cabinet's style

BASE CABINETS

BASE CABINETS

1-Door 1-Drawer Cabinet

- B09 – 09W x 34.5H x 24D
- B12 – 12W x 34.5H x 24D
- B15 – 15W x 34.5H x 24D
- B18 – 18W x 34.5H x 24D
- B21 – 21W x 34.5H x 24D



BASE CABINETS

2-Door 1-Drawer Cabinet

- B24 – 24W x 34.5H x 24D
- B27 – 27W x 34.5H x 24D
- B30 – 30W x 34.5H x 24D
- B33 – 33W x 34.5H x 24D
- B36 – 36W x 34.5H x 24D



DRAWER BASE CABINETS

3-Drawer Cabinet

- DB12 – 12W x 34.5H x 24D
- DB15 – 15W x 34.5H x 24D
- DB18 – 18W x 34.5H x 24D
- DB21 – 21W x 34.5H x 24D



DRAWER BASE CABINETS

3-Drawer Cabinet

- DB24 – 24W x 34.5H x 24D
- DB27 – 27W x 34.5H x 24D
- DB30 – 30W x 34.5H x 24D
- DB36 – 36W x 34.5H x 24D



SINK BASE CABINETS

2-Door 1-Drawer Face Cabinet

- SB24 – 24W x 34.5H x 24D
- SB27 – 27W x 34.5H x 24D
- SB30 – 30W x 34.5H x 24D
- SB33 – 33W x 34.5H x 24D
- SB36 – 36W x 34.5H x 24D
- SB42 – 42W x 34.5H x 24D



DRAWER BASE CABINETS

5-Drawer Cabinet

- DB06 – 06W x 34.5H x 24D



WALL CABINETS

WALL CABINETS

1-Door Cabinet

- W0930 – 09W x 30H x 12D
- W1230 – 12W x 30H x 12D
- W1530 – 15W x 30H x 12D
- W1830 – 18W x 30H x 12D
- W2130 – 21W x 30H x 12D

NOTE: We also carry stock in 36" and 42" high wall cabinets



OVER THE RANGE CABINETS

2-Door Cabinet

- W3012 – 30W x 12H x 12D
- W3018 – 30W x 18H x 12D
- W3024 – 30W x 24H x 12D



WALL CABINETS

2-Door Cabinet

- W2430 – 24W x 30H x 12D
- W2730 – 27W x 30H x 12D
- W3030 – 30W x 30H x 12D
- W3330 – 33W x 30H x 12D
- W3630 – 36W x 30H x 12D

NOTE: We also carry stock in 36" and 42" high wall cabinets



OVER THE FRIDGE CABINETS

2-Door Cabinet

- W3612 – 36W x 12H x 12D
- W3618 – 36W x 18H x 12D
- W3624 – 36W x 24H x 12D
- W3612 – 36W x 12H x 24D
- W3618 – 36W x 18H x 24D
- W3624 – 36W x 24H x 24D



GLASS DOORS OPTIONS

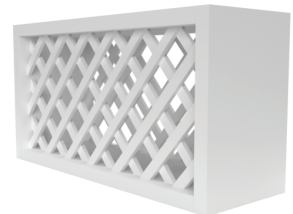
Door Only

- W1230G – 12W x 30H
- W1530G – 15W x 30H
- W1830G – 18W x 30H
- W1236G – 12W x 36H
- W1536G – 15W x 36H
- W1836G – 18W x 36H
- W1242G – 12W x 42H
- W1542G – 15W x 42H
- W1842G – 18W x 42H
- WDC2430G – 24W x 30H
- WDC2436G – 24W x 36H
- WDC2442G – 24W x 42H
- WDC243615G – 24W x 36H
- WDC244215G – 24W x 42H



WALL WINE RACK

- WWR3018 – 30W x 18H x 12D
- WWR3618 – 36W x 18H x 12D



WALL OPEN END SHELF

- WOES0630 – 06W x 30H x 12D
- WOES0636 – 06W x 36H x 12D
- WOES0642 – 06W x 42H x 12D
- WOES1230 – 12W x 30H x 12D
- WOES1236 – 12W x 36H x 12D
- WOES1242 – 12W x 42H x 12D



TALL AND CORNER CABINETS

PANTRY CABINET

1-Top Door 1-Bottom Door Pantry

- PC1884 – 18W x 84H x 24D
- PC1884 – 18W x 90H x 24D
- PC1884 – 18W x 96H x 24D



BASE LAZY SUZAN

2-Door Cabinet

- BLS33 – 33W x 34.5H x 24D
- BLS36 – 36W x 34.5H x 24D

NOTE: Lazy Suzan metal inserts not included, available upon request



DOUBLE OVEN CABINET

2-Door 1-Drawer Cabinet

- DOC3084 – 30W x 84H x 24D
- DOC3090 – 30W x 90H x 24D
- DOC3096 – 30W x 96H x 24D



BASE DIAGONAL CORNER

1-Door Cabinet

- BDC36 – 36W x 34.5H x 24D

NOTE: Does not include a shelf



BASE BLIND CORNER

1-Door 1-Drawer Cabinet

- BBC39 – 39W x 34.5H x 24D
- BBC42 – 42W x 34.5H x 24D
- BBC45 – 45W x 34.5H x 24D
- BBC48 – 48W x 34.5H x 24D



PANTRY CABINET

2-Top Door 2-Bottom Door Pantry

- PC2484 – 24W x 84H x 24D
- PC3084 – 30W x 84H x 24D
- PC3684 – 36W x 84H x 24D
- PC2490 – 24W x 90H x 24D
- PC3090 – 30W x 90H x 24D
- PC3690 – 36W x 90H x 24D
- PC2496 – 24W x 96H x 24D
- PC3096 – 30W x 96H x 24D
- PC3696 – 36W x 96H x 24D



WALL DIAGONAL CORNER

1-Door Cabinet

- WDC2430 – 24W x 30H x 12D
- WDC2436 – 24W x 36H x 12D
- WDC2442 – 24W x 42H x 12D
- WDC243615 – 24W x 36H x 15D
- WDC244215 – 24W x 42H x 15D



VANITY CABINETS

VANITY SINK BASE

2-Door 1-Drawer Cabinet

- VSB24 – 24W x 34.5H x 21D
- VSB30 – 30W x 34.5H x 21D
- VSB36 – 36W x 34.5H x 21D



VANITY DRAWER BASE

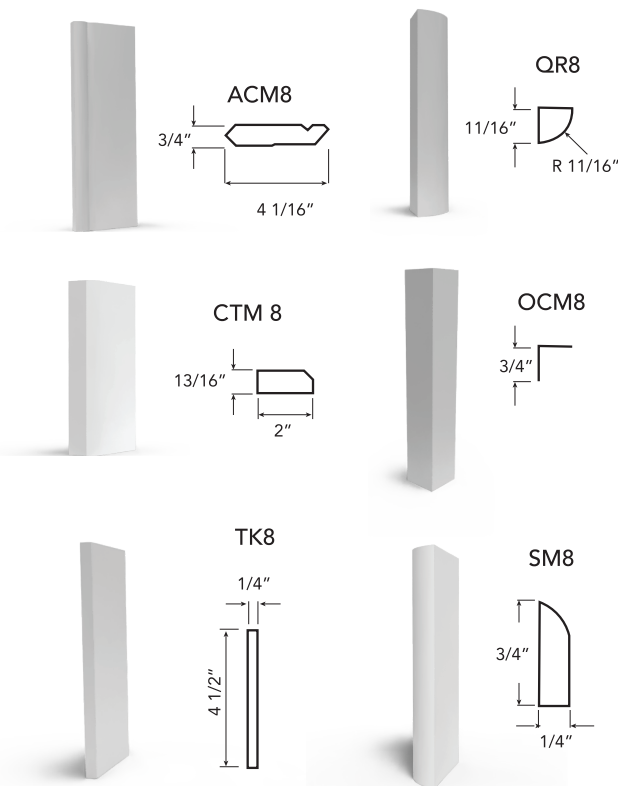
3-Drawer Cabinet

- VDB12 – 12W x 34.5H x 21D
- VDB18 – 18W x 34.5H x 21D

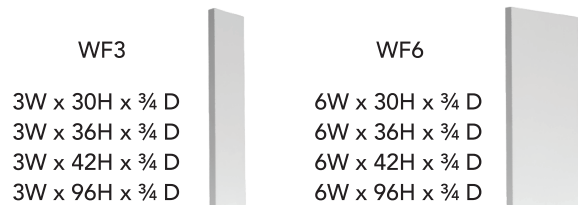


TRIMS AND MOLDINGS

MOLDINGS



FILLERS



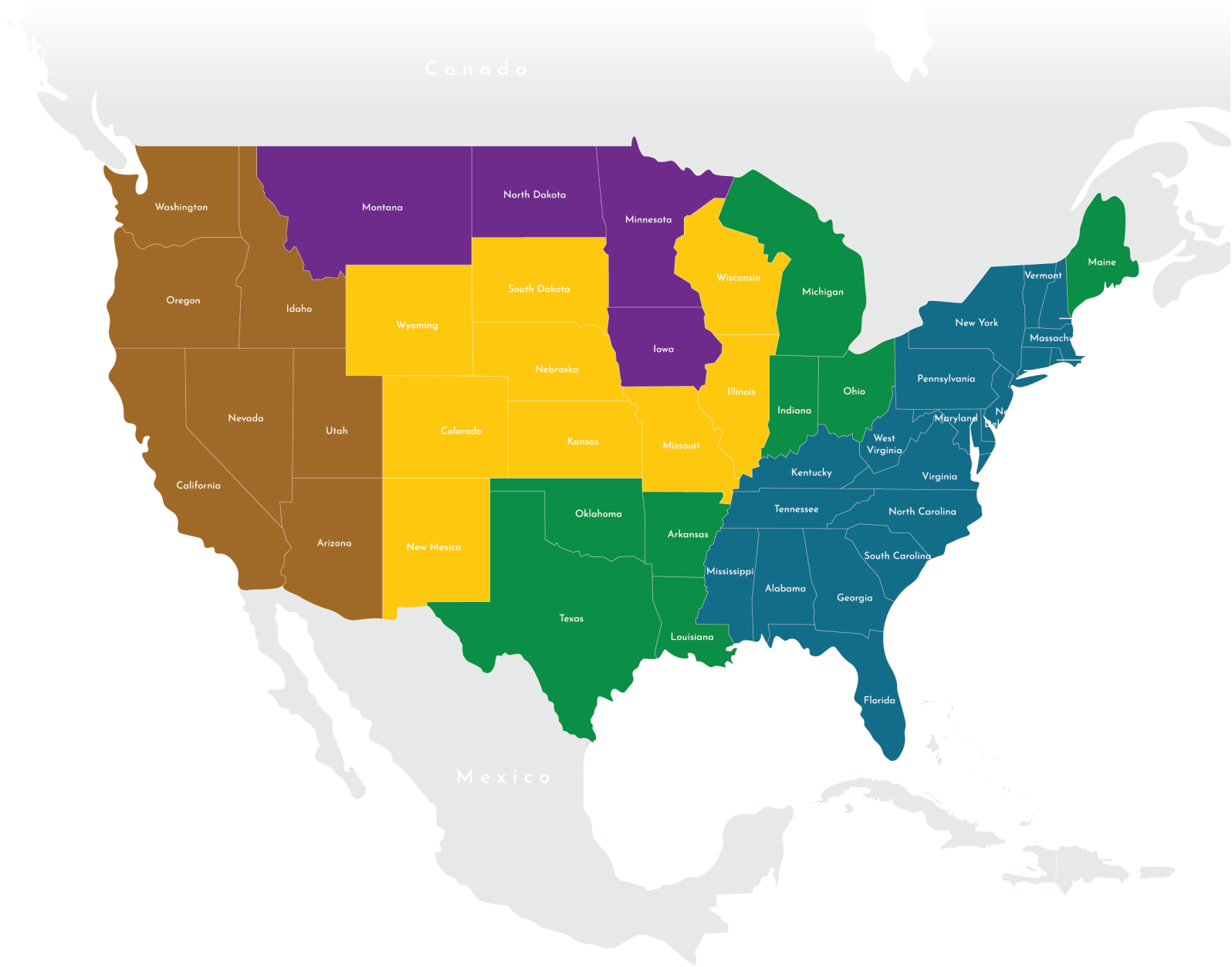
PANELS



DECO DOORS



NORTH AMERICA SHIPPING MAP



1-2 Days



2-3 Days



3-4 Days



4-5 Days



5-7 Days

Some outlying zip codes may require additional day(s) transit.

FRANCHISING OPPORTUNITIES AVAILABLE

Panda Kitchen and Bath is shaking up the RTA cabinet industry with a unique franchise opportunity. Contact us today to learn more about starting your own franchise.

(877)-307-2632
franchising@pandakitchen.com



Our franchise consultants walk potential franchise candidates through the discovery process below. We don't believe in high pressure sales — we want to help give you all of the information you need to make the right decision for you and your future.



1

FINDING THE RIGHT FIT

People have different reasons for starting a business. It may be taking more direct control of your earning potential or creating a work/life balance that better fits into your lifestyle design. Our franchise consultants will discuss your options with you and suggest the best fit based on your priorities.



2

TALK TERRITORY

Once you've locked in, the next step is to look at the available territory options. Your franchise consultants will present you with the available territory / markets within your target area where you could establish your franchise.



3

REVIEW DISCLOSURE DOCUMENTS

At this stage your franchise consultant will present you with the Franchise Disclosure Document or FDD so that you can read the terms of the franchise agreement. Your franchise consultant will help answer any questions that you may have regarding the agreement after the 14 day review period



4

HEAR FROM OUR OWNERS

One of the most important parts of the process is "validations" or talking to existing franchise owners. Starting a franchise is a big decision — now is your chance to talk to franchise owners who have been in your shoes and hear from them their experience of business ownership.



5

DECISION DAY

This is the final step in the process where a day is scheduled to meet with key team members within the franchise, to review the franchise opportunity in depth, finalize territory, and make a decision if you are ready to move forward with starting your business.