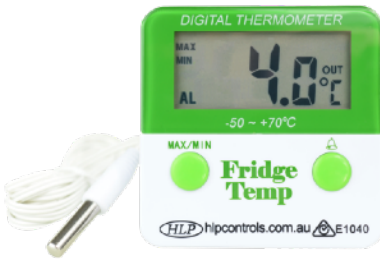


Fridge Temp - Start Up Guide (v1.0)



If you've just purchased a Fridge Temp, you'll be pleased to know that setting it up is a straightforward process. Follow these easy instructions to set up your Fridge Temp quickly and easily.

Insert the battery

To install the battery for your Fridge Temp, simply turn it over and locate & open the battery compartment by sliding the cover down. Insert a **AAA battery**, ensuring that the positive end lines up with the corresponding symbol in the compartment. Once the battery is securely in place, replace the cover and turn the device over to view the temperature display. If no number is displayed, double-check that the battery was inserted correctly, with the positive end aligned with the appropriate symbol.



Installing the Fridge Temp into the fridge.

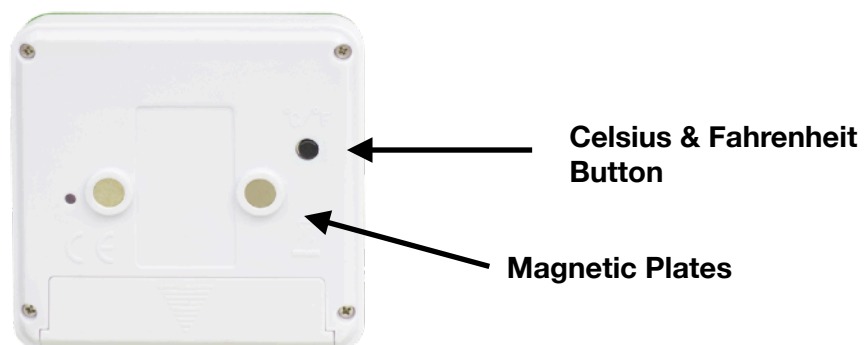
The Fridge Temp is equipped with two magnets on the back, which makes it easy to attach to the fridge. For optimal placement, we recommend placing it on the side of the fridge where the door swings from. Alternatively, if you prefer not to use the magnets, the Fridge Temp also comes with self adhesive hook-and-loop tape. Simply attach one piece of the tape to the fridge and the other to the back of the Fridge Temp.

Running the probe inside the fridge.

To position the Fridge Temp probe inside the fridge, run the cable neatly through the side of the fridge door that swings open. Place the probe on the inside of the fridge, on the side wall about two-thirds of the way in from the front door and approximately halfway up. This placement provides a good balance of the fridge temperature and reduces the impact on the probe when opening the fridge to grab food. You have two options for mounting the probe: a supplied plastic sleeve or a suction cup. For the suction cup, slide the probe through the hole until it feels snug, then stick the suction cup on a flat surface on the inside wall of the fridge. For the plastic sleeve option, you can use the included hook-and-loop velcro tape, and the probe slides in easily.

Changing from Celsius to Fahrenheit

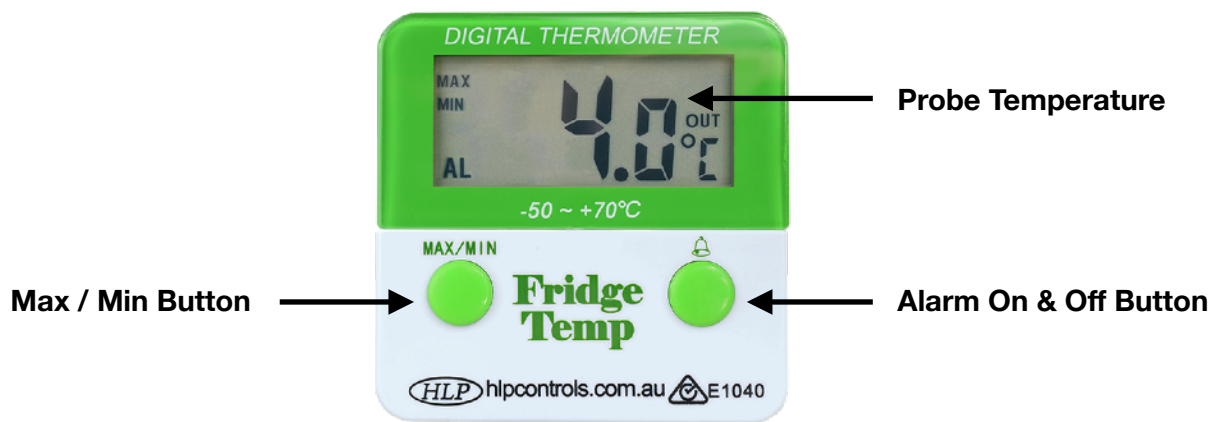
To switch between Celsius and Fahrenheit temperatures on your Fridge Temp, locate the small black button on the back of the device. You can press this button with your finger, or for convenience, use a pen to lightly press. Pressing the button will toggle between Celsius and Fahrenheit, allowing you to choose the temperature scale that you prefer.



Maximum / Minimum Memory

The Fridge Temp has a green button labeled (MAX/MIN) which serves multiple functions. To view the maximum temperature memory, simply press the (MAX/MIN) button once, and the MAX symbol will appear on the display. Press it again to view the minimum temperature memory, and the MIN symbol will be displayed. To return to viewing the current temperature, press the (MAX/MIN) button once more.

In the event that you need to reset the maximum and minimum temperatures, you can do so by holding down the (MAX/MIN) button for one second. This will clear the memory of the previously recorded maximum and minimum temperatures, allowing you to start fresh.



High /Low Temperature Alarm Setting

To set the high and low temperature alarm limits, press the green (Bell symbol) button. The HIGH icon will flash, indicating the high alarm limit is being set. Use the °C/°F button on the back of the unit to set the desired high alarm limit. Then, press the (Bell) button again, and the LOW icon will flash, indicating the low alarm limit is being set. Use the °C/°F button again on the back of the unit to set the desired low alarm limit. If you continue holding the °C/°F button, the temperature will automatically increase. To set a low limit you may need to hold the °C/°F button until it goes through the whole range & back to 0°. To finish and return to the current temperature, press the (Bell) button again.

Turn Alarm Off and On

To toggle the alarm on or off, press the (Bell) button. When the alarm function is on, the (AL) symbol will be displayed.

Note: While setting limits, if the current temperature is outside the set limit, the alarm will sound. Press any button to stop the alarm.