

Temperature Datalogger

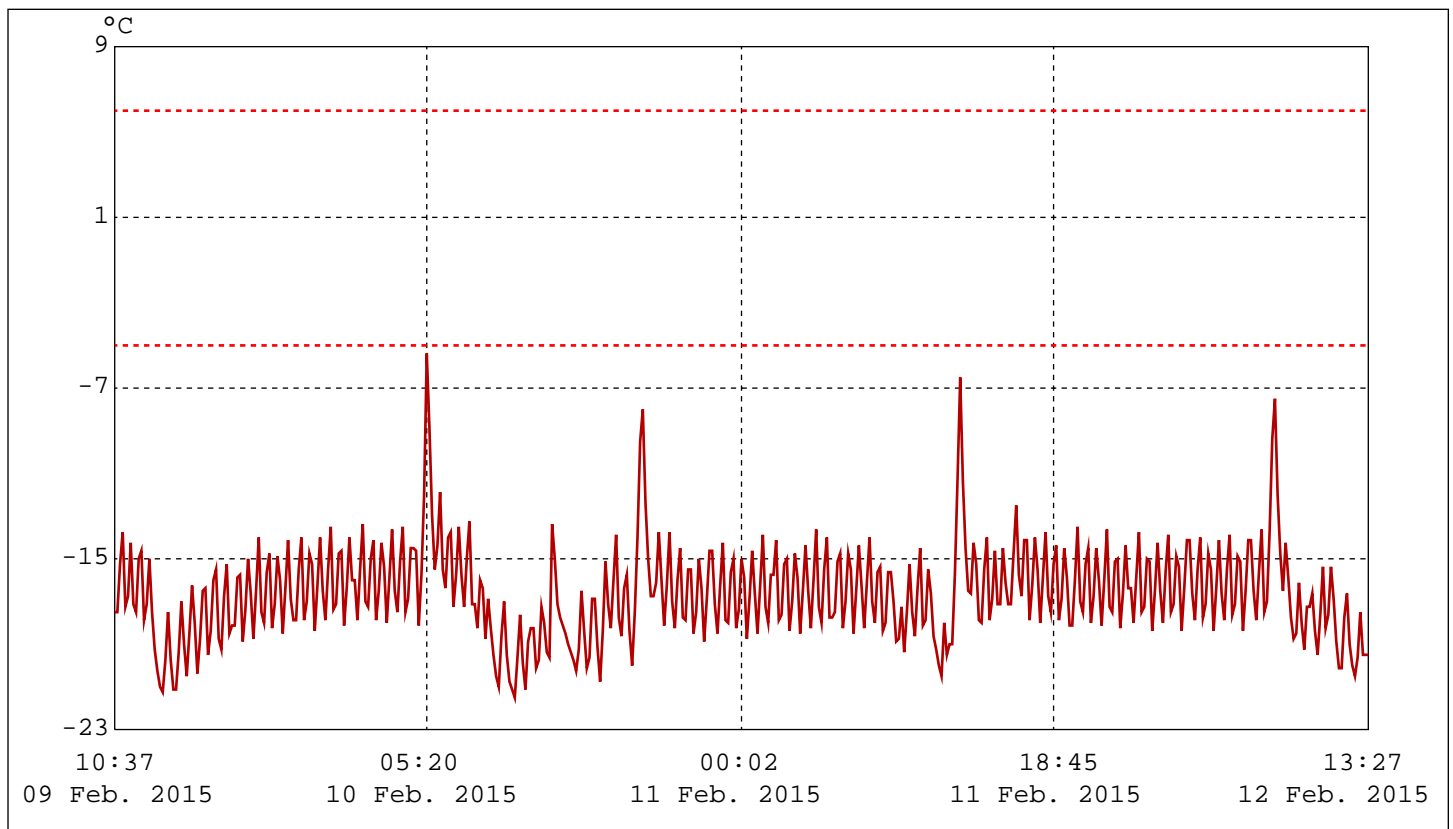
Serial
1510191



Device Specification	
Lot MFG Date	21 Jan. 2015
MFG lot#	1410332
Firmware version	V1.0
Original time zone	UTC+10
Start	10:07,09 Feb. 2015
Finish	13:27,12 Feb. 2015
Sampling Rate	10 Minutes
Start Delay	30 Minutes
Readings	449 points
High Alarm	6.0°C
Low Alarm	-5.0°C
Alarm Delay	0 Minutes
Alarm Type	Disable

Statistics(excludes Start Delay)	
Duration Time	3Days 2Hrs. 50Min.
Max Temp	-5.3°C
Average Temp	-16.5°C
Min Temp	-21.5°C
Std. Dev	2.2°C
MKT	-16.2°C
Total time within	0Days 0Hrs. 0Min.
Total time above	3Days 2Hrs. 50Min.

File Information	
File created	13:33,12 Feb. 2015



--

Marked Events	
(1)	(5)
(2)	(6)
(3)	(7)
(4)	(8)

Temperature Datalogger

Serial
1510191



Index	Date	Time	°C	Index	Date	Time	°C
1	09/02/15	10:47:50	*-17.5	61	09/02/15	20:47:50	*-18.4
2	09/02/15	10:57:50	*-15.2	62	09/02/15	20:57:50	*-16.3
3	09/02/15	11:07:50	*-13.7	63	09/02/15	21:07:50	*-14.1
4	09/02/15	11:17:50	*-17.2	64	09/02/15	21:17:50	*-16.8
5	09/02/15	11:27:50	*-16.7	65	09/02/15	21:27:50	*-17.8
6	09/02/15	11:37:50	*-14.2	66	09/02/15	21:37:50	*-15.5
7	09/02/15	11:47:50	*-17.1	67	09/02/15	21:47:50	*-14.0
8	09/02/15	11:57:50	*-17.4	68	09/02/15	21:57:50	*-17.8
9	09/02/15	12:07:50	*-15.0	69	09/02/15	22:07:50	*-17.0
10	09/02/15	12:17:50	*-14.6	70	09/02/15	22:17:50	*-14.7
11	09/02/15	12:27:50	*-17.8	71	09/02/15	22:27:50	*-15.2
12	09/02/15	12:37:50	*-17.1	72	09/02/15	22:37:50	*-18.3
13	09/02/15	12:47:50	*-14.9	73	09/02/15	22:47:50	*-16.2
14	09/02/15	12:57:50	*-17.5	74	09/02/15	22:57:50	*-14.0
15	09/02/15	13:07:50	*-19.2	75	09/02/15	23:07:50	*-16.4
16	09/02/15	13:17:50	*-20.2	76	09/02/15	23:17:50	*-17.8
17	09/02/15	13:27:50	*-20.9	77	09/02/15	23:27:50	*-15.5
18	09/02/15	13:37:50	*-21.2	78	09/02/15	23:37:50	*-13.5
19	09/02/15	13:47:50	*-19.7	79	09/02/15	23:47:50	*-17.3
20	09/02/15	13:57:50	*-17.5	80	09/02/15	23:57:50	*-17.1
21	09/02/15	14:07:50	*-19.7	81	10/02/15	00:07:50	*-14.7
22	09/02/15	14:17:50	*-21.1	82	10/02/15	00:17:50	*-14.6
23	09/02/15	14:27:50	*-19.3	83	10/02/15	00:27:50	*-18.1
24	09/02/15	14:37:50	*-16.9	84	10/02/15	00:37:50	*-16.3
25	09/02/15	14:47:50	*-19.0	85	10/02/15	00:47:50	*-14.0
26	09/02/15	14:57:50	*-20.5	86	10/02/15	00:57:50	*-15.9
27	09/02/15	15:07:50	*-18.4	87	10/02/15	01:07:50	*-17.8
28	09/02/15	15:17:50	*-16.2	88	10/02/15	01:17:50	*-15.5
29	09/02/15	15:27:50	*-18.0	89	10/02/15	01:27:50	*-13.3
30	09/02/15	15:37:50	*-20.3	90	10/02/15	01:37:50	*-16.9
31	09/02/15	15:47:50	*-18.7	91	10/02/15	01:47:50	*-17.2
32	09/02/15	15:57:50	*-16.4	92	10/02/15	01:57:50	*-14.9
33	09/02/15	16:07:50	*-16.3	93	10/02/15	02:07:50	*-14.1
34	09/02/15	16:17:50	*-19.5	94	10/02/15	02:17:50	*-17.8
35	09/02/15	16:27:50	*-18.3	95	10/02/15	02:27:50	*-16.5
36	09/02/15	16:37:50	*-16.0	96	10/02/15	02:37:50	*-14.2
37	09/02/15	16:47:50	*-15.5	97	10/02/15	02:47:50	*-15.3
38	09/02/15	16:57:50	*-18.7	98	10/02/15	02:57:50	*-17.9
39	09/02/15	17:07:50	*-19.2	99	10/02/15	03:07:50	*-15.8
40	09/02/15	17:17:50	*-16.7	100	10/02/15	03:17:50	*-13.6
41	09/02/15	17:27:50	*-15.2	101	10/02/15	03:27:50	*-16.5
42	09/02/15	17:37:50	*-18.5	102	10/02/15	03:37:50	*-17.4
43	09/02/15	17:47:50	*-18.1	103	10/02/15	03:47:50	*-15.1
44	09/02/15	17:57:50	*-15.8	104	10/02/15	03:57:50	*-13.5
45	09/02/15	18:07:50	*-15.7	105	10/02/15	04:07:50	*-17.4
46	09/02/15	18:17:50	*-18.8	106	10/02/15	04:17:50	*-16.8
47	09/02/15	18:27:50	*-17.3	107	10/02/15	04:27:50	*-14.5
48	09/02/15	18:37:50	*-15.0	108	10/02/15	04:37:50	*-14.6
49	09/02/15	18:47:50	*-16.6	109	10/02/15	04:47:50	*-18.1
50	09/02/15	18:57:50	*-18.7	110	10/02/15	04:57:50	*-15.7
51	09/02/15	19:07:50	*-16.4	111	10/02/15	05:07:50	*-12.0
52	09/02/15	19:17:50	*-14.0	112	10/02/15	05:17:50	* -5.3
53	09/02/15	19:27:50	*-17.5	113	10/02/15	05:27:50	* -8.8
54	09/02/15	19:37:50	*-18.0	114	10/02/15	05:37:50	*-12.9
55	09/02/15	19:47:50	*-15.6	115	10/02/15	05:47:50	*-15.4
56	09/02/15	19:57:50	*-14.7	116	10/02/15	05:57:50	*-14.3
57	09/02/15	20:07:50	*-18.2	117	10/02/15	06:07:50	*-11.8
58	09/02/15	20:17:50	*-17.1	118	10/02/15	06:17:50	*-15.4
59	09/02/15	20:27:50	*-14.8	119	10/02/15	06:27:50	*-16.3
60	09/02/15	20:37:50	*-15.9	120	10/02/15	06:37:50	*-13.9

Temperature Datalogger

Serial
1510191



Index	Date	Time	°C	Index	Date	Time	°C
121	10/02/15	06:47:50	*-13.7	181	10/02/15	16:47:50	*-17.7
122	10/02/15	06:57:50	*-17.2	182	10/02/15	16:57:50	*-18.6
123	10/02/15	07:07:50	*-15.7	183	10/02/15	17:07:50	*-16.3
124	10/02/15	07:17:50	*-13.4	184	10/02/15	17:17:50	*-15.7
125	10/02/15	07:27:50	*-15.7	185	10/02/15	17:27:50	*-18.3
126	10/02/15	07:37:50	*-17.2	186	10/02/15	17:37:50	*-19.9
127	10/02/15	07:47:50	*-15.0	187	10/02/15	17:47:50	*-17.5
128	10/02/15	07:57:50	*-13.2	188	10/02/15	17:57:50	*-13.9
129	10/02/15	08:07:50	*-17.1	189	10/02/15	18:07:50	* -9.5
130	10/02/15	08:17:50	*-18.2	190	10/02/15	18:17:50	* -7.9
131	10/02/15	08:27:50	*-15.9	191	10/02/15	18:27:50	*-12.3
132	10/02/15	08:37:50	*-16.3	192	10/02/15	18:37:50	*-15.0
133	10/02/15	08:47:50	*-18.7	193	10/02/15	18:47:50	*-16.7
134	10/02/15	08:57:50	*-16.8	194	10/02/15	18:57:50	*-16.1
135	10/02/15	09:07:50	*-18.2	195	10/02/15	19:07:50	*-13.7
136	10/02/15	09:17:50	*-19.4	196	10/02/15	19:17:50	*-15.9
137	10/02/15	09:27:50	*-20.5	197	10/02/15	19:27:50	*-18.1
138	10/02/15	09:37:50	*-21.0	198	10/02/15	19:37:50	*-16.2
139	10/02/15	09:47:50	*-18.6	199	10/02/15	19:47:50	*-13.7
140	10/02/15	09:57:50	*-16.9	200	10/02/15	19:57:50	*-17.0
141	10/02/15	10:07:50	*-19.5	201	10/02/15	20:07:50	*-18.2
142	10/02/15	10:17:50	*-20.7	202	10/02/15	20:17:50	*-15.9
143	10/02/15	10:27:50	*-21.1	203	10/02/15	20:27:50	*-14.4
144	10/02/15	10:37:50	*-21.5	204	10/02/15	20:37:50	*-17.7
145	10/02/15	10:47:50	*-19.6	205	10/02/15	20:47:50	*-17.8
146	10/02/15	10:57:50	*-17.6	206	10/02/15	20:57:50	*-15.5
147	10/02/15	11:07:50	*-19.8	207	10/02/15	21:07:50	*-15.4
148	10/02/15	11:17:50	*-21.1	208	10/02/15	21:17:50	*-18.4
149	10/02/15	11:27:50	*-18.8	209	10/02/15	21:27:50	*-17.4
150	10/02/15	11:37:50	*-18.2	210	10/02/15	21:37:50	*-15.0
151	10/02/15	11:47:50	*-20.1	211	10/02/15	21:47:50	*-16.3
152	10/02/15	11:57:50	*-19.7	212	10/02/15	21:57:50	*-18.8
153	10/02/15	12:07:50	*-17.2	213	10/02/15	22:07:50	*-16.8
154	10/02/15	12:17:50	*-18.0	214	10/02/15	22:17:50	*-14.6
155	10/02/15	12:27:50	*-19.3	215	10/02/15	22:27:50	*-17.1
156	10/02/15	12:37:50	*-19.6	216	10/02/15	22:37:50	*-18.5
157	10/02/15	12:47:50	*-13.3	217	10/02/15	22:47:50	*-16.2
158	10/02/15	12:57:50	*-15.0	218	10/02/15	22:57:50	*-14.2
159	10/02/15	13:07:50	*-17.1	219	10/02/15	23:07:50	*-17.8
160	10/02/15	13:17:50	*-17.7	220	10/02/15	23:17:50	*-18.0
161	10/02/15	13:27:50	*-18.1	221	10/02/15	23:27:50	*-15.6
162	10/02/15	13:37:50	*-18.5	222	10/02/15	23:37:50	*-14.9
163	10/02/15	13:47:50	*-18.9	223	10/02/15	23:47:50	*-18.2
164	10/02/15	13:57:50	*-19.3	224	10/02/15	23:57:50	*-17.3
165	10/02/15	14:07:50	*-19.7	225	11/02/15	00:07:50	*-15.0
166	10/02/15	14:17:50	*-20.2	226	11/02/15	00:17:50	*-15.8
167	10/02/15	14:27:50	*-19.2	227	11/02/15	00:27:50	*-18.7
168	10/02/15	14:37:50	*-16.5	228	11/02/15	00:37:50	*-16.8
169	10/02/15	14:47:50	*-18.3	229	11/02/15	00:47:50	*-14.6
170	10/02/15	14:57:50	*-20.1	230	11/02/15	00:57:50	*-16.6
171	10/02/15	15:07:50	*-19.6	231	11/02/15	01:07:50	*-18.5
172	10/02/15	15:17:50	*-16.8	232	11/02/15	01:17:50	*-16.2
173	10/02/15	15:27:50	*-19.1	233	11/02/15	01:27:50	*-13.8
174	10/02/15	15:37:50	*-20.7	234	11/02/15	01:37:50	*-17.2
175	10/02/15	15:47:50	*-18.3	235	11/02/15	01:47:50	*-18.0
176	10/02/15	15:57:50	*-15.1	236	11/02/15	01:57:50	*-15.7
177	10/02/15	16:07:50	*-17.1	237	11/02/15	02:07:50	*-14.1
178	10/02/15	16:17:50	*-18.2	238	11/02/15	02:17:50	*-17.8
179	10/02/15	16:27:50	*-15.9	239	11/02/15	02:27:50	*-17.6
180	10/02/15	16:37:50	*-13.8	240	11/02/15	02:37:50	*-15.2

Temperature Datalogger

Serial
1510191



Index	Date	Time	°C	Index	Date	Time	°C
241	11/02/15	02:47:50	*-14.9	301	11/02/15	12:47:50	*-15.7
242	11/02/15	02:57:50	*-18.3	302	11/02/15	12:57:50	*-11.2
243	11/02/15	03:07:50	*-17.0	303	11/02/15	13:07:50	* -6.4
244	11/02/15	03:17:50	*-14.7	304	11/02/15	13:17:50	*-11.3
245	11/02/15	03:27:50	*-15.8	305	11/02/15	13:27:50	*-14.5
246	11/02/15	03:37:50	*-18.5	306	11/02/15	13:37:50	*-16.5
247	11/02/15	03:47:50	*-16.5	307	11/02/15	13:47:50	*-16.6
248	11/02/15	03:57:50	*-14.3	308	11/02/15	13:57:50	*-14.2
249	11/02/15	04:07:50	*-16.5	309	11/02/15	14:07:50	*-15.2
250	11/02/15	04:17:50	*-18.2	310	11/02/15	14:17:50	*-17.8
251	11/02/15	04:27:50	*-16.0	311	11/02/15	14:27:50	*-17.9
252	11/02/15	04:37:50	*-13.6	312	11/02/15	14:37:50	*-15.5
253	11/02/15	04:47:50	*-17.2	313	11/02/15	14:47:50	*-13.9
254	11/02/15	04:57:50	*-17.9	314	11/02/15	14:57:50	*-17.8
255	11/02/15	05:07:50	*-15.5	315	11/02/15	15:07:50	*-16.8
256	11/02/15	05:17:50	*-14.0	316	11/02/15	15:17:50	*-14.6
257	11/02/15	05:27:50	*-17.7	317	11/02/15	15:27:50	*-17.1
258	11/02/15	05:37:50	*-17.4	318	11/02/15	15:37:50	*-17.1
259	11/02/15	05:47:50	*-15.1	319	11/02/15	15:47:50	*-14.5
260	11/02/15	05:57:50	*-14.7	320	11/02/15	15:57:50	*-16.1
261	11/02/15	06:07:50	*-18.2	321	11/02/15	16:07:50	*-17.1
262	11/02/15	06:17:50	*-17.0	322	11/02/15	16:17:50	*-14.7
263	11/02/15	06:27:50	*-14.7	323	11/02/15	16:27:50	*-12.5
264	11/02/15	06:37:50	*-15.4	324	11/02/15	16:37:50	*-15.7
265	11/02/15	06:47:50	*-18.4	325	11/02/15	16:47:50	*-16.7
266	11/02/15	06:57:50	*-16.5	326	11/02/15	16:57:50	*-14.1
267	11/02/15	07:07:50	*-14.3	327	11/02/15	17:07:50	*-14.1
268	11/02/15	07:17:50	*-16.2	328	11/02/15	17:17:50	*-17.8
269	11/02/15	07:27:50	*-18.2	329	11/02/15	17:27:50	*-16.2
270	11/02/15	07:37:50	*-16.1	330	11/02/15	17:37:50	*-14.0
271	11/02/15	07:47:50	*-14.0	331	11/02/15	17:47:50	*-15.4
272	11/02/15	07:57:50	*-16.9	332	11/02/15	17:57:50	*-17.9
273	11/02/15	08:07:50	*-17.9	333	11/02/15	18:07:50	*-15.8
274	11/02/15	08:17:50	*-15.6	334	11/02/15	18:17:50	*-13.7
275	11/02/15	08:27:50	*-15.3	335	11/02/15	18:27:50	*-16.7
276	11/02/15	08:37:50	*-18.3	336	11/02/15	18:37:50	*-17.5
277	11/02/15	08:47:50	*-18.0	337	11/02/15	18:47:50	*-15.2
278	11/02/15	08:57:50	*-15.6	338	11/02/15	18:57:50	*-14.3
279	11/02/15	09:07:50	*-16.9	339	11/02/15	19:07:50	*-17.8
280	11/02/15	09:17:50	*-18.8	340	11/02/15	19:17:50	*-16.8
281	11/02/15	09:27:50	*-18.7	341	11/02/15	19:27:50	*-14.4
282	11/02/15	09:37:50	*-17.2	342	11/02/15	19:37:50	*-15.8
283	11/02/15	09:47:50	*-19.3	343	11/02/15	19:47:50	*-18.1
284	11/02/15	09:57:50	*-17.5	344	11/02/15	19:57:50	*-16.0
285	11/02/15	10:07:50	*-15.2	345	11/02/15	20:07:50	*-13.5
286	11/02/15	10:17:50	*-17.5	346	11/02/15	20:17:50	*-17.0
287	11/02/15	10:27:50	*-18.6	347	11/02/15	20:27:50	*-17.5
288	11/02/15	10:37:50	*-16.3	348	11/02/15	20:37:50	*-15.2
289	11/02/15	10:47:50	*-14.5	349	11/02/15	20:47:50	*-14.5
290	11/02/15	10:57:50	*-18.1	350	11/02/15	20:57:50	*-18.0
291	11/02/15	11:07:50	*-17.8	351	11/02/15	21:07:50	*-16.7
292	11/02/15	11:17:50	*-15.4	352	11/02/15	21:17:50	*-14.4
293	11/02/15	11:27:50	*-16.6	353	11/02/15	21:27:50	*-16.0
294	11/02/15	11:37:50	*-18.6	354	11/02/15	21:37:50	*-18.1
295	11/02/15	11:47:50	*-19.2	355	11/02/15	21:47:50	*-15.9
296	11/02/15	11:57:50	*-19.9	356	11/02/15	21:57:50	*-13.6
297	11/02/15	12:07:50	*-20.5	357	11/02/15	22:07:50	*-17.2
298	11/02/15	12:17:50	*-18.0	358	11/02/15	22:17:50	*-17.4
299	11/02/15	12:27:50	*-19.4	359	11/02/15	22:27:50	*-15.1
300	11/02/15	12:37:50	*-19.0	360	11/02/15	22:37:50	*-14.9

Temperature Datalogger

Serial
1510191



Index	Date	Time	°C	Index	Date	Time	°C
361	11/02/15	22:47:50	*-18.2	421	12/02/15	08:47:50	*-15.8
362	11/02/15	22:57:50	*-16.6	422	12/02/15	08:57:50	*-17.7
363	11/02/15	23:07:50	*-14.3	423	12/02/15	09:07:50	*-18.7
364	11/02/15	23:17:50	*-16.3	424	12/02/15	09:17:50	*-18.5
365	11/02/15	23:27:50	*-18.0	425	12/02/15	09:27:50	*-16.1
366	11/02/15	23:37:50	*-15.8	426	12/02/15	09:37:50	*-17.9
367	11/02/15	23:47:50	*-13.7	427	12/02/15	09:47:50	*-19.2
368	11/02/15	23:57:50	*-17.4	428	12/02/15	09:57:50	*-17.2
369	12/02/15	00:07:50	*-17.2	429	12/02/15	10:07:50	*-16.6
370	12/02/15	00:17:50	*-14.9	430	12/02/15	10:17:50	*-18.3
371	12/02/15	00:27:50	*-15.1	431	12/02/15	10:27:50	*-19.4
372	12/02/15	00:37:50	*-18.3	432	12/02/15	10:37:50	*-17.6
373	12/02/15	00:47:50	*-16.5	433	12/02/15	10:47:50	*-15.3
374	12/02/15	00:57:50	*-14.2	434	12/02/15	10:57:50	*-18.2
375	12/02/15	01:07:50	*-16.4	435	12/02/15	11:07:50	*-17.6
376	12/02/15	01:17:50	*-17.9	436	12/02/15	11:17:50	*-15.3
377	12/02/15	01:27:50	*-15.6	437	12/02/15	11:27:50	*-16.8
378	12/02/15	01:37:50	*-13.8	438	12/02/15	11:37:50	*-18.8
379	12/02/15	01:47:50	*-17.5	439	12/02/15	11:47:50	*-20.1
380	12/02/15	01:57:50	*-17.1	440	12/02/15	11:57:50	*-20.1
381	12/02/15	02:07:50	*-14.8	441	12/02/15	12:07:50	*-17.7
382	12/02/15	02:17:50	*-15.3	442	12/02/15	12:17:50	*-16.6
383	12/02/15	02:27:50	*-18.3	443	12/02/15	12:27:50	*-18.9
384	12/02/15	02:37:50	*-16.3	444	12/02/15	12:37:50	*-20.0
385	12/02/15	02:47:50	*-14.1	445	12/02/15	12:47:50	*-20.4
386	12/02/15	02:57:50	*-16.6	446	12/02/15	12:57:50	*-19.6
387	12/02/15	03:07:50	*-17.8	447	12/02/15	13:07:50	*-17.4
388	12/02/15	03:17:50	*-15.5	448	12/02/15	13:17:50	*-19.5
389	12/02/15	03:27:50	*-14.0	449	12/02/15	13:27:50	*-19.4
390	12/02/15	03:37:50	*-17.7				
391	12/02/15	03:47:50	*-17.1				
392	12/02/15	03:57:50	*-14.7				
393	12/02/15	04:07:50	*-15.4				
394	12/02/15	04:17:50	*-18.3				
395	12/02/15	04:27:50	*-16.3				
396	12/02/15	04:37:50	*-14.1				
397	12/02/15	04:47:50	*-16.6				
398	12/02/15	04:57:50	*-17.8				
399	12/02/15	05:07:50	*-15.5				
400	12/02/15	05:17:50	*-13.8				
401	12/02/15	05:27:50	*-17.6				
402	12/02/15	05:37:50	*-17.1				
403	12/02/15	05:47:50	*-14.8				
404	12/02/15	05:57:50	*-15.1				
405	12/02/15	06:07:50	*-18.3				
406	12/02/15	06:17:50	*-16.4				
407	12/02/15	06:27:50	*-14.1				
408	12/02/15	06:37:50	*-16.4				
409	12/02/15	06:47:50	*-17.8				
410	12/02/15	06:57:50	*-15.6				
411	12/02/15	07:07:50	*-13.6				
412	12/02/15	07:17:50	*-17.4				
413	12/02/15	07:27:50	*-17.0				
414	12/02/15	07:37:50	*-13.7				
415	12/02/15	07:47:50	* -9.3				
416	12/02/15	07:57:50	* -7.5				
417	12/02/15	08:07:50	*-12.0				
418	12/02/15	08:17:50	*-14.7				
419	12/02/15	08:27:50	*-16.5				
420	12/02/15	08:37:50	*-14.2				