

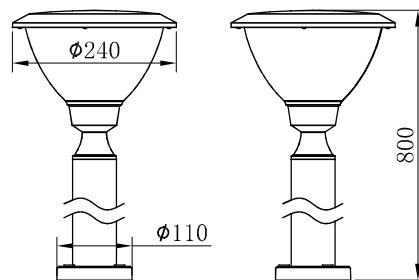
Read this user guide carefully before installation, and keep for future reference.

Instruction

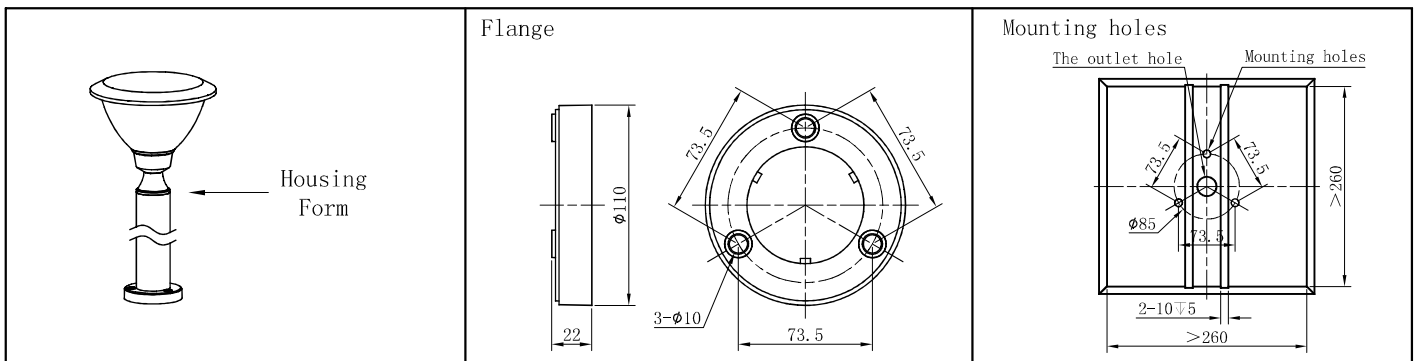
■ Attention

- 1.Lamp should be installed by professional electrician;
- 2.Check the power switch has been turned off;
- 3.Input Voltage:110-240V~ 50/60Hz ;
- 4.Insulation protection level: Class I ;
- 5.Operating Temperature: -30°C ~ +45°C .

■ Product Dimension



■ Components and Tools



■ Installation Steps

