

THE RULES

ESCAPE ROOM RULES



1. Once you and your team are ready to start, hit the timer button. You are not allowed to pause or change the time. Your teacher will tell you how long to set the timer for.
2. Make sure you look at and read **EVERYTHING** in each section including titles, images, etc.
3. Write answers in **ALL CAPS** with **NO SPACES**.
4. You are allowed **ONE FREE HINT**.
5. You can get two more hints, but they will cost you 3 minutes on the clock per hint!
6. Please do not Google the answers.
7. Please do not share your answers with other students.

**STUDENTS CAN
PLAY:**

- ✓ **INDIVIDUALLY**
- ✓ **PAIRS**
- ✓ **GROUPS**

THE STORYLINE

LOCKED OUT



You are on a field trip with your science class at a water treatment facility. The water treatment operator is explaining to the class how the aerobic digester works. You notice the nearby stairs on the outside of the nearby storage tanks and would love to see the view of the city from the top of the storage tanks. Unfortunately, no one noticed that you had disappeared, and they continued the tour of the facility, while the operator was sure to shut and lock each door as the class went through in the plant. Solve the next 10 locks to have someone come find you and lead you back to the class.

SAMPLE CHALLENGE



CHALLENGE #8



Below is a list of ways you can save water in your day-to-day life. However, there are two actions listed that would not save water. Use the letters of the two that do not belong to solve this lock.

- A. Turn off the water when brushing your teeth.
- B. Fix leaks.
- C. Run the dishwasher and washing machine when you have half a load or more.
- D. Take a shower instead of a bath.
- E. Install a dual flush or low flush toilet.
- F. Install a rain barrel to water plants.
- G. Always water your lawn, no matter the conditions.
- H. Use a pail and bucket to clean your car.

**STUDENTS
USE THEIR
KNOWLEDGE
TO SOLVE
THIS
CHALLENGE**

LESSON FORMAT



DIGITAL

✓ Editable Google Form

A screenshot of a digital escape room form. At the top is a video thumbnail showing a pond with reeds. Below it is a progress indicator 'Section 1 of 15'. The main title is 'Grade 8 Water Systems Digital Escape Room' with a close button and a menu icon. Below the title is an instruction: 'Work through each set of challenges to solve the escape room.' The form contains three text input fields: 'First Name *', 'Last Name *', and 'Class Code or Period *', each with a 'Short answer text' label and a dotted line for input.

RESOURCE CAN BE USED IN-PERSON OR ONLINE

LOVE DIGITAL ESCAPE ROOMS?

DIGITAL ESCAPE ROOM MEGA BUNDLE

EDITABLE & DIGITAL

CHALLENGE #1

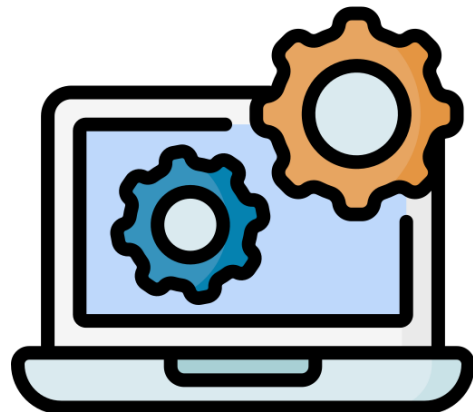
Watch the linked video and answer the questions below.
Use the answers to create the eight-letter code.

- | | |
|---|--|
| 1. Who are the experts that design bridges?
A. Mechanics
B. Engineers
C. Teachers
D. Financial Analysts | 3. What are strong materials that large, sturdy bridges are often made of?
A. Iron and steel
B. Plastic and copper
C. Steel and plastic
D. Copper and iron |
| 2. Which bridge is said to be the world's busiest bridge?
A. Golden Gate Bridge
B. Sydney Harbor Bridge
C. Confederation Bridge
D. George Washington Bridge | 4. What is the most basic type of bridge?
A. Arch bridge
B. Suspension bridge
C. Beam bridge
D. Truss bridge |



11 DIGITAL
ESCAPE ROOMS

2 Peas
and a
Dog



DIGITAL ESCAPE ROOM MEGA BUNDLE

Get 11 exciting digital escape rooms to entertain and educate your middle school students. These digital escape rooms reinforce critical thinking, problem solving and literacy skills.

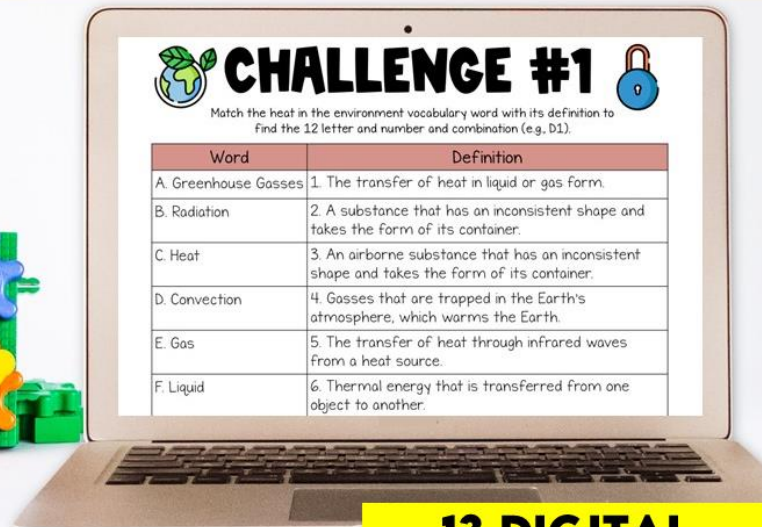
Purchase this bundle by clicking [here](#).

TEACH SCIENCE?



DIGITAL ESCAPE ROOM SCIENCE BUNDLE

EDITABLE & DIGITAL



CHALLENGE #1

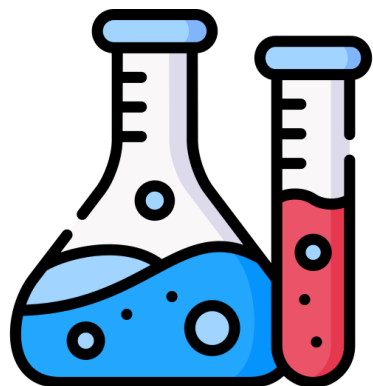
Match the heat in the environment vocabulary word with its definition to find the 12 letter and number combination (e.g. D1).

Word	Definition
A. Greenhouse Gasses	1. The transfer of heat in liquid or gas form.
B. Radiation	2. A substance that has an inconsistent shape and takes the form of its container.
C. Heat	3. An airborne substance that has an inconsistent shape and takes the form of its container.
D. Convection	4. Gasses that are trapped in the Earth's atmosphere, which warms the Earth.
E. Gas	5. The transfer of heat through infrared waves from a heat source.
F. Liquid	6. Thermal energy that is transferred from one object to another.

**13 DIGITAL
ESCAPE ROOMS**

SCIENCE DIGITAL ESCAPE ROOM BUNDLE

Get 13 exciting digital escape rooms to entertain and educate your middle school students. These digital escape rooms reinforce critical thinking, problem solving, science and literacy skills.



Purchase this bundle by clicking [here](#).