

# Science Fiction

## Reading Assignment

PDF & Digital Formats



## 2 Peas and a Dog

Middle School Teaching Resources

# RESOURCE INCLUDES

- ☐ Detailed Lesson Plan
- ☐ Assignment Sheets
- ☐ Rubric Assessment
- ☐ Points-Based Assessment
- ☐ Google Slides Format
- ☐ Individual PDFs of student pages to post to Google Classroom™

# EXAMPLE PAGES

## MONTHLY GENRE SUGGESTIONS



This is a suggested outline of when to use each genre.

January	Science Fiction
February	Biography/Memoirs
March	Free Verse Novel
April	Fantasy Fiction
May	Non-Fiction
June	Traditional Literature vs. Fractured Fairy Tales
July	Classical Fiction
August	Sports Fiction
September	Realistic Fiction
October	Mystery Fiction
November	Graphic Novel
December	Historical Fiction

## SCIENCE FICTION ASSIGNMENT



**Genre:** A science fiction novel takes place in a different type of society where extreme technological, scientific or supernatural events occur.

### Book Suggestions:

- ✓ Divergent by Veronica Roth
- ✓ The Hunger Games by Suzanne Collins
- ✓ Delirium by Lauren Oliver
- ✓ Alex Rider Series by Anthony Horowitz
- ✓ Gone by Michael Grant
- ✓ Matched by Ally Condie
- ✓ Legend by Marie Lu
- ✓ The Giver by Lois Lowry
- ✓ The Uglies by Scott Westerfeld
- ✓ The Maze Runner by James Dashner
- ✓ The Selection by Kiera Cass
- ✓ Among The Hidden by Margaret Peterson Haddix
- ✓ Cinder by Marissa Meyer
- ✓ The Darkest Minds (series) by Alexandra Bracken
- ✓ City of Ember by Jeanne DuPrau
- ✓ Rule of 3 by Eric Walters

© <http://www.2peasandadog.com>

## READING ASSIGNMENT CRITERIA

### LEVEL 4

- ☐ Assignment is thoroughly completed with extensive attention to detail and proof from the text.

### LEVEL 3

- ☐ Assignment is completed, but more detail is required on some parts.

### LEVEL 2

- ☐ Assignment is completed, but several areas need more attention to detail and content.

### LEVEL 1

- ☐ Teacher support required to complete assignment due to lack of completion, content, and details.

### FEEDBACK:



# LESSON PLAN



**Lesson Overview:** Students will creatively demonstrate their thoughts about their independent reading novel using a genre-focused book report. Students get to self-select the book they would like to read based on their interests, reading level, and teacher guidance if required.

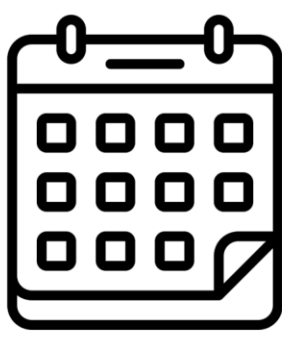
## Materials Needed:

- Photocopy a class set or use the provided Google slide version of the genre book report.

## Teacher Instructions

1. Photocopy a class set of the book report assignment pages.
2. If possible provide a school librarian the genre ahead of time so they can pull some books off the shelves and reserve them for the classes.
3. Read the assignment aloud as a class.
4. Give students class time to read their novels and to work on the book report assignment.

# MONTHLY GENRE SUGGESTIONS

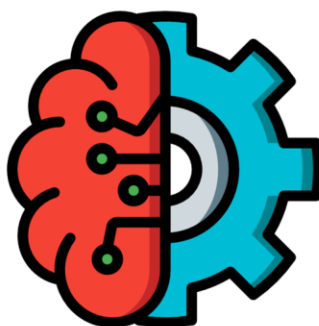


PREVIEW

This is a suggested outline of when to read each genre.

January	Science Fiction
February	Biography/Non-fiction
March	Franchise Novel
April	Contemporary Fiction
May	Non-Fiction
June	Traditional Literature vs. Fractured Fairy Tales
July	Classic Fiction
August	Sports Fiction
September	Realistic Fiction
October	Mystery Fiction
November	Graphic Novel
December	Historical Fiction

# SCIENCE FICTION ASSIGNMENT



**Genre:** A science fiction novel takes place in a different type of society where extreme technological, scientific or supernatural events occur.

## Book Suggestions:

- ✓ Divergent by Veronica Roth
- ✓ The Hunger Games by Suzanne Collins
- ✓ Delirium by Lauren Oliver
- ✓ Alex Rider series by Anthony Browne
- ✓ The Maze Runner by James Dashner
- ✓ The Giver by Lois Lowry
- ✓ The Uglies by Scott Westerfeld
- ✓ The Selection by Kiera Cass
- ✓ Among The Hidden by Margaret Peterson Haddix
- ✓ Cinder by Marissa Meyer
- ✓ The Darkest Minds (series) by Alexandra Bracken
- ✓ City of Ember by Jeanne DuPrau
- ✓ Rule of 3 by Eric Walters

# READING ASSIGNMENT CRITERIA

## Level 4

☐ Assignment is thoroughly completed with extensive attention to detail and proof from the text.

## Level 3

☐ Assignment is completed, but may need more detail or proof in some parts.

## Level 2

☐ Assignment is completed, but even more work is needed more attention to detail and proof.

## Level 1

☐ Too much support required to complete assignment due to lack of complete content, and details.

Feedback:

