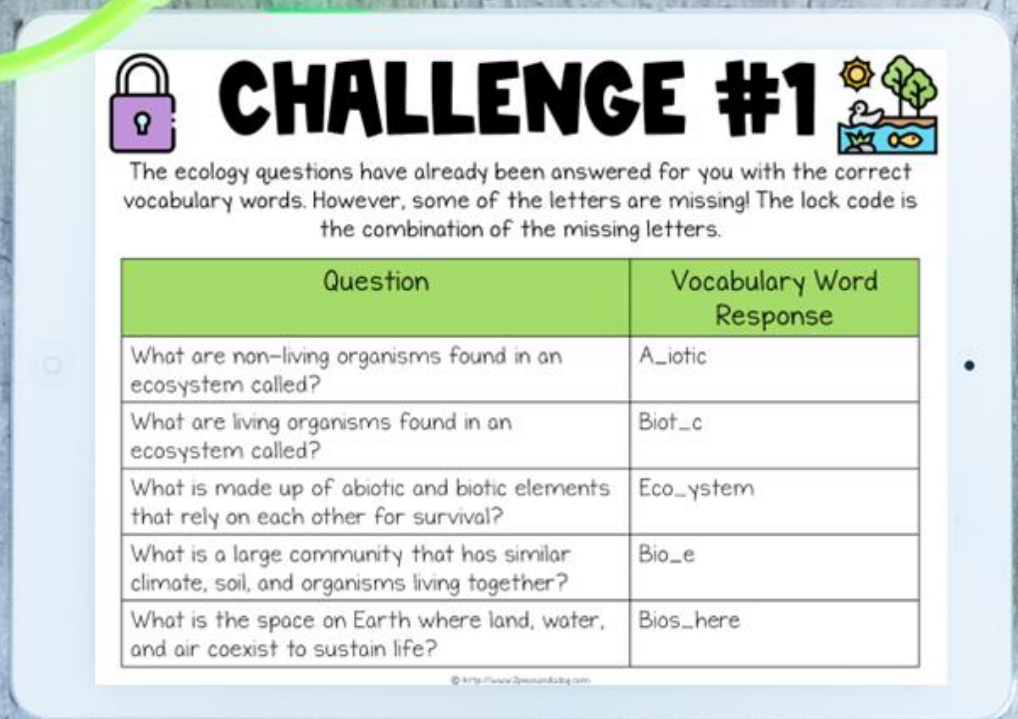


INTERACTIONS IN THE ENVIRONMENT DIGITAL ESCAPE ROOM

EDITABLE & DIGITAL



CHALLENGE #1

The ecology questions have already been answered for you with the correct vocabulary words. However, some of the letters are missing! The lock code is the combination of the missing letters.

Question	Vocabulary Word Response
What are non-living organisms found in an ecosystem called?	A_iotic
What are living organisms found in an ecosystem called?	Biot_c
What is made up of abiotic and biotic elements that rely on each other for survival?	Eco_ystem
What is a large community that has similar climate, soil, and organisms living together?	Bio_e
What is the space on Earth where land, water, and air coexist to sustain life?	Bios_here

© <http://www.2peasandadog.com>

RESOURCE INCLUDES

1. Digital Escape Room
2. 11 Challenges "Locks"
3. Teacher Instructions
4. Student Instructions
5. Answer Key
6. Reflection Questions



Your students have accidentally gotten locked in the shark-feeding room! Will they solve the challenges correctly to escape?

THE RULES

ESCAPE ROOM RULES



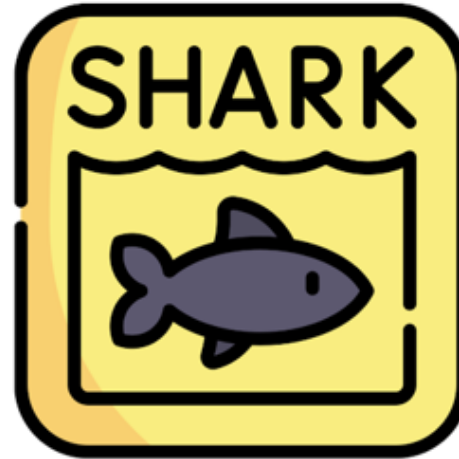
1. Once you and your team are ready to start, hit the timer button. You are not allowed to pause or change the time. Your teacher will tell you how long to set the timer for.
2. Make sure you look at and read **EVERYTHING** in each section including titles, images, etc.
3. Write answers in **ALL CAPS** with **NO SPACES**.
4. You are allowed **ONE FREE HINT**.
5. You can get two more hints, but they will cost you 3 minutes on the clock per hint!
6. Please do not Google the answers.
7. Please do not share your answers with other students.

**STUDENTS CAN
PLAY:**

- ✓ **INDIVIDUALLY**
- ✓ **PAIRS**
- ✓ **GROUPS**

THE STORYLINE

AQUARIUM FIELD TRIP



You are on a field trip to your local aquarium, and you are so excited to see the sharks up close. You notice that the shark tour isn't until the very end of the day. How disappointing! You pause at the vending machine to get a snack. (Lunch time is still two hours away!) While you are at the vending machine, the manager of the aquarium comes up to you and asks, "Where have you been all this time? We have been looking for you. The sharks need to be fed NOW!" You try to tell him that there must be a misunderstanding because you are not the shark trainer, but he does not believe you. You follow the manager to the shark exhibit and he tells you to get into your wetsuit and to promptly feed the sharks. You like sharks, but are certainly not ready to feed them! Solve the next 11 challenges to see if you can escape the shark tank.

SAMPLE CHALLENGE



CHALLENGE #4



You find a piece of paper with 5 definitions written on it. However, the word that is defined is written in Morse Code. Use the Morse Code cipher to decode the ecosystem vocabulary words.

Definition	Vocabulary Word
Consumers that mostly hunt for their food.	.-.-. .-. . -.. .- - --- .-.
Consumers that are hunted and eaten as food.	.-.-. .-. . -.-
Organisms that eat off the remains of living things.	... -.-. .- ...- . -.-. .-. .-
Organisms that break down animal waste and dead, biotic elements.	-.. . -.-. --- -- .-.- ----. .
The transfer of energy within an ecosystem.	. -.. .-. --.-.- / ..-. .-. --- .-

**STUDENTS
USE A
MORSE CODE
CIPHER TO
SOLVE THIS
CHALLENGE**

LESSON FORMAT



DIGITAL

✓ Editable Google Form


A screenshot of a Google Form titled "Environmental Interactions - Digital Escape Room". The form is part of a "Section 1 of 16" and includes a header image of dandelions. The form contains three required text input fields: "First Name *", "Last Name *", and "Class Code or Period *". Each field has a "Short answer text" label and a dotted line for input. There are also close and menu icons in the top right of the form header.

RESOURCE CAN BE USED IN-PERSON OR ONLINE

LOVE DIGITAL ESCAPE ROOMS?


DIGITAL ESCAPE ROOM MEGA BUNDLE

EDITABLE & DIGITAL

CHALLENGE #1 

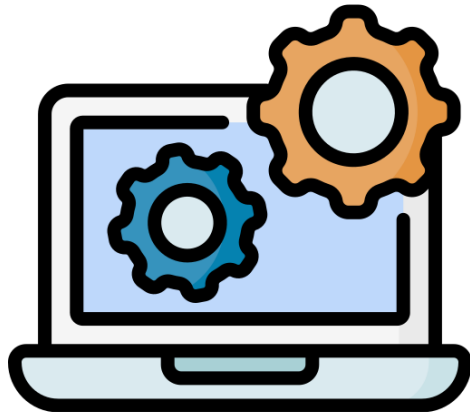
Watch the linked video and answer the questions below.
Use the answers to create the eight-letter code.

1. Who are the experts that design bridges? A. Mechanics B. Engineers C. Teachers D. Financial Analysts	3. What are strong materials that large, sturdy bridges are often made of? A. Iron and steel B. Plastic and copper C. Steel and plastic D. Copper and iron
2. Which bridge is said to be the world's busiest bridge? A. Golden Gate Bridge B. Sydney Harbor Bridge C. Confederation Bridge D. George Washington Bridge	4. What is the most basic type of bridge? A. Arch bridge B. Suspension bridge C. Beam bridge D. Truss bridge



**11 DIGITAL
ESCAPE ROOMS**

2 Peas
and a
Dog



DIGITAL ESCAPE ROOM MEGA BUNDLE

Get 11 exciting digital escape rooms to entertain and educate your middle school students. These digital escape rooms reinforce critical thinking, problem solving and literacy skills.

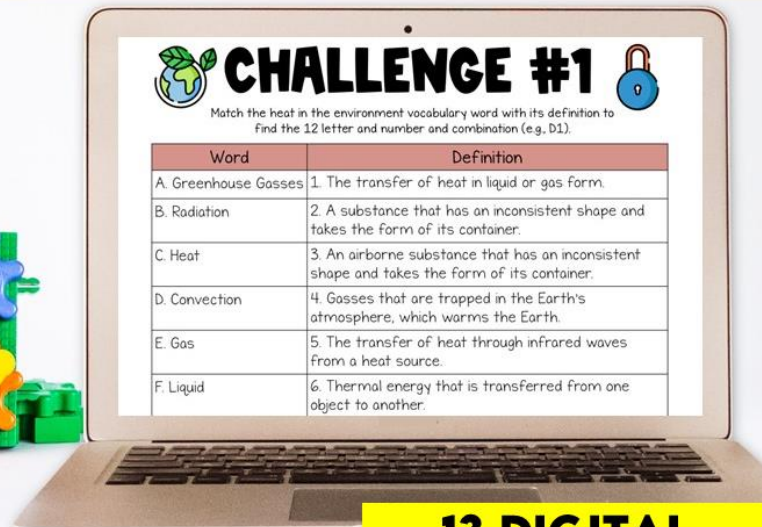
Purchase this bundle by clicking [here](#).

TEACH SCIENCE?



DIGITAL ESCAPE ROOM SCIENCE BUNDLE

EDITABLE & DIGITAL



CHALLENGE #1

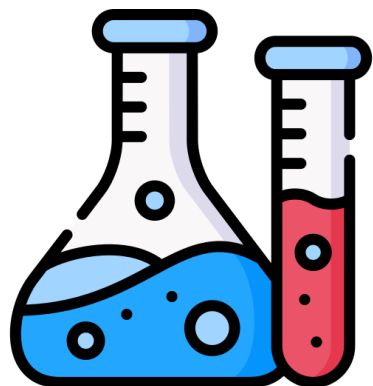
Match the heat in the environment vocabulary word with its definition to find the 12 letter and number combination (e.g. D1).

Word	Definition
A. Greenhouse Gasses	1. The transfer of heat in liquid or gas form.
B. Radiation	2. A substance that has an inconsistent shape and takes the form of its container.
C. Heat	3. An airborne substance that has an inconsistent shape and takes the form of its container.
D. Convection	4. Gasses that are trapped in the Earth's atmosphere, which warms the Earth.
E. Gas	5. The transfer of heat through infrared waves from a heat source.
F. Liquid	6. Thermal energy that is transferred from one object to another.

**13 DIGITAL
ESCAPE ROOMS**

SCIENCE DIGITAL ESCAPE ROOM BUNDLE

Get 13 exciting digital escape rooms to entertain and educate your middle school students. These digital escape rooms reinforce critical thinking, problem solving, science and literacy skills.



Purchase this bundle by clicking [here](#).