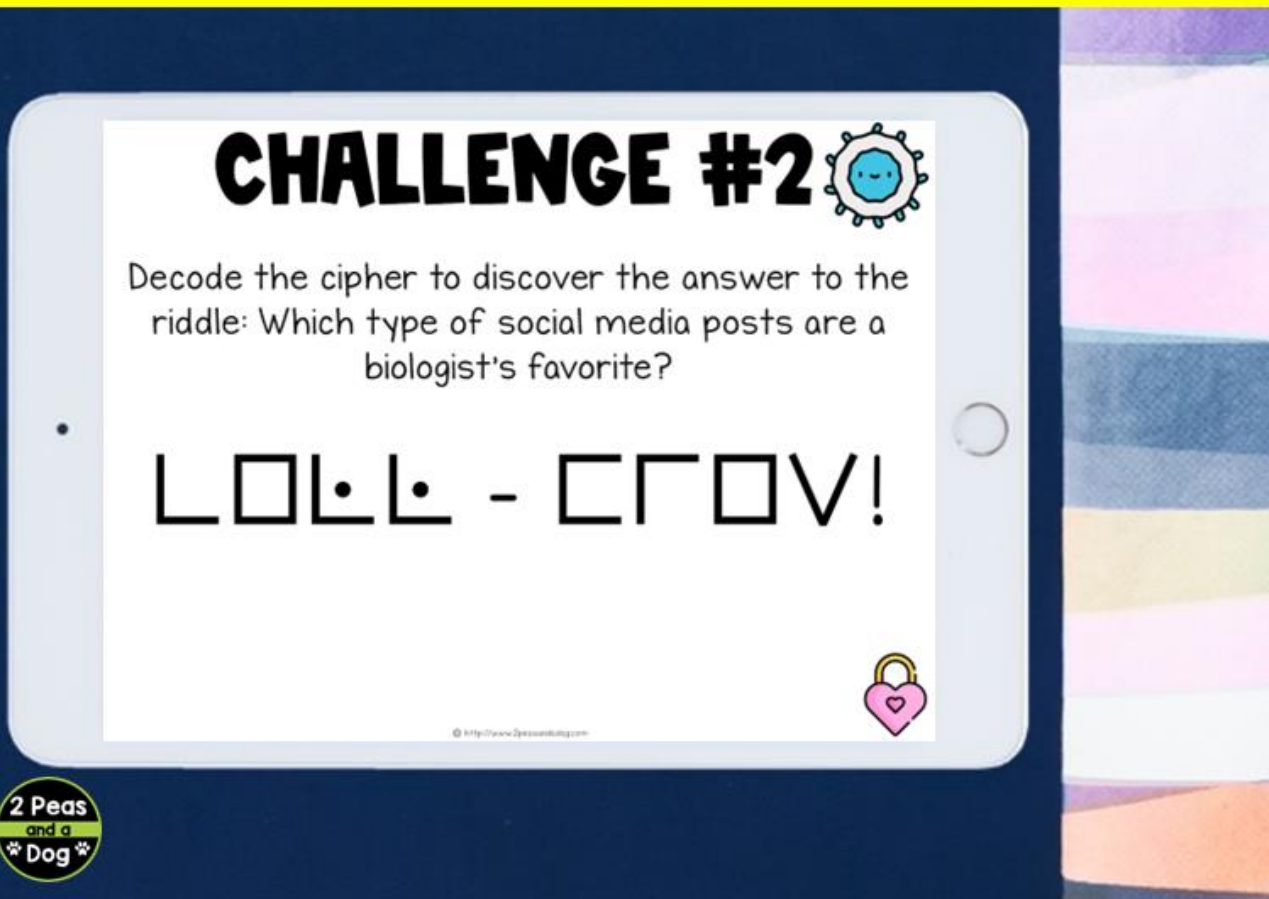


# CELLS

## DIGITAL ESCAPE ROOM

### EDITABLE & DIGITAL



# RESOURCE INCLUDES

1. Digital Escape Room
2. 10 Challenges "Locks"
3. Teacher Instructions
4. Student Instructions
5. Answer Key
6. Reflection Questions



"Always looking for new activities to engage students in the concepts we are learning. Thanks for sharing a great resource!"  
- Education FUNdamentals



# THE RULES

## ESCAPE ROOM RULES



1. Once you and your team are ready to start, hit the timer button. You are not allowed to pause or change the time. Your teacher will tell you how long to set the timer for.
2. Make sure you look at and read **EVERYTHING** in each section including titles, images, etc.
3. Write answers in **ALL CAPS** with **NO SPACES**.
4. You are allowed **ONE FREE HINT**.
5. You can get two more hints, but they will cost you 3 minutes on the clock per hint!
6. Please do not Google the answers.
7. Please do not share your answers with other students.

**STUDENTS CAN  
PLAY:**

- ✓ **INDIVIDUALLY**
- ✓ **PAIRS**
- ✓ **GROUPS**

# THE STORYLINE

## A GREENHOUSE SURPRISE



You are at a greenhouse to learn more about taking care of plants and plant cells. The head botanist is trying to show the class some palm tree plant cells under the microscope when you decide to look in the greenhouse to see if there are any cool flowers you can put under the microscope, too. Unfortunately, another botanist noticed the door was open and quickly went to close and lock it to prevent animals from getting in, without realizing you are still in there. Complete the next ten locks in order to escape from the greenhouse!

# SAMPLE CHALLENGE



## CHALLENGE #1



The cells vocabulary words have already been matched to the correct definition. However, some of the letters are missing! The lock code is the combination of the missing letters.

| Question   | Vocabulary Word Response |
|--|--------------------------|
| Developed in the 1600s and has 3 basic principles      | Cell Th_ory              |
| The Jello-like solution that fills every cell          | C_toplasm                |
| Known as "the powerhouse of the cell"                  | Mitoc_ondria             |
| One of the basic units of life                         | Ani_al Cell              |
| Protects the cytoplasm of the cell                     | Membr_ne                 |
| The smallest part of an organism                       | Cel_                     |
| When select organs work together to perform a function | Or_an System             |
| Controls activities and growth of a cell               | Nucle_s                  |

**STUDENTS  
USE THE  
VOCABULARY  
WORDS TO  
SOLVE THIS  
CHALLENGE**



# LESSON FORMAT



**DIGITAL**

✓ Editable Google Form


A screenshot of a digital escape room form. At the top, there is a header image of a microscope. Below the image, the text reads "Section 1 of 15". The main title of the form is "Grade 8 Cells - Digital Escape Room", with a close button (X) and a menu button (three dots) to its right. Below the title, there is a subtitle: "Work through each set of challenges to solve the escape room." The form contains three text input fields, each with a red asterisk indicating a required field. The first field is labeled "First Name", the second is "Last Name", and the third is "Class Code or Period". Each field has a "Short answer text" label and a dotted line indicating the input area.

**RESOURCE CAN BE USED IN-PERSON OR ONLINE**

# LOVE DIGITAL ESCAPE ROOMS?


## DIGITAL ESCAPE ROOM MEGA BUNDLE

**EDITABLE & DIGITAL**

**CHALLENGE #1** 

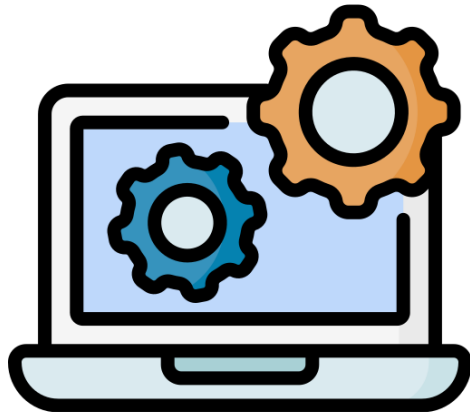
Watch the linked video and answer the questions below.  
Use the answers to create the eight-letter code.

|   |  |
|---|--|
| 1. Who are the experts that design bridges?<br>A. Mechanics<br>B. Engineers<br>C. Teachers<br>D. Financial Analysts   | 3. What are strong materials that large, sturdy bridges are often made of?<br>A. Iron and steel<br>B. Plastic and copper<br>C. Steel and plastic<br>D. Copper and iron |
| 2. Which bridge is said to be the world's busiest bridge?<br>A. Golden Gate Bridge<br>B. Sydney Harbor Bridge<br>C. Confederation Bridge<br>D. George Washington Bridge | 4. What is the most basic type of bridge?<br>A. Arch bridge<br>B. Suspension bridge<br>C. Beam bridge<br>D. Truss bridge   |



**11 DIGITAL  
ESCAPE ROOMS**

2 Peas  
and a  
Dog



## DIGITAL ESCAPE ROOM MEGA BUNDLE

Get 11 exciting digital escape rooms to entertain and educate your middle school students. These digital escape rooms reinforce critical thinking, problem solving and literacy skills.

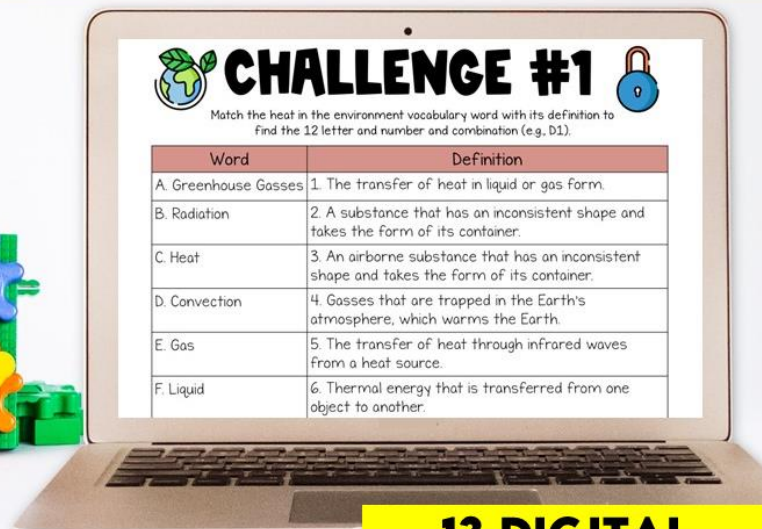
Purchase this bundle by clicking [here](#).

# TEACH SCIENCE?



## DIGITAL ESCAPE ROOM SCIENCE BUNDLE

EDITABLE & DIGITAL



### CHALLENGE #1

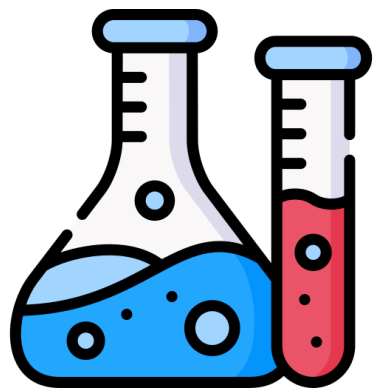
Match the heat in the environment vocabulary word with its definition to find the 12 letter and number combination (e.g. D1).

| Word                 | Definition   |
|----------------------|--|
| A. Greenhouse Gasses | 1. The transfer of heat in liquid or gas form.   |
| B. Radiation         | 2. A substance that has an inconsistent shape and takes the form of its container.           |
| C. Heat              | 3. An airborne substance that has an inconsistent shape and takes the form of its container. |
| D. Convection        | 4. Gasses that are trapped in the Earth's atmosphere, which warms the Earth.                 |
| E. Gas               | 5. The transfer of heat through infrared waves from a heat source.                           |
| F. Liquid            | 6. Thermal energy that is transferred from one object to another.                            |

13 DIGITAL  
ESCAPE ROOMS

# SCIENCE DIGITAL ESCAPE ROOM BUNDLE

Get 13 exciting digital escape rooms to entertain and educate your middle school students. These digital escape rooms reinforce critical thinking, problem solving, science and literacy skills.



Purchase this bundle by clicking [here](#).