



OUTDOOR ELEMENTS II

132cm/52"
BLADESPAN

OUTDOOR



PULL CHAIN

LIMITED
LIFETIME
MOTOR
WARRANTY

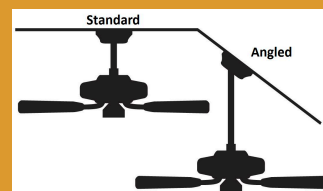


WET RATED

MOTOR SIZE: 172 mm x 20 mm

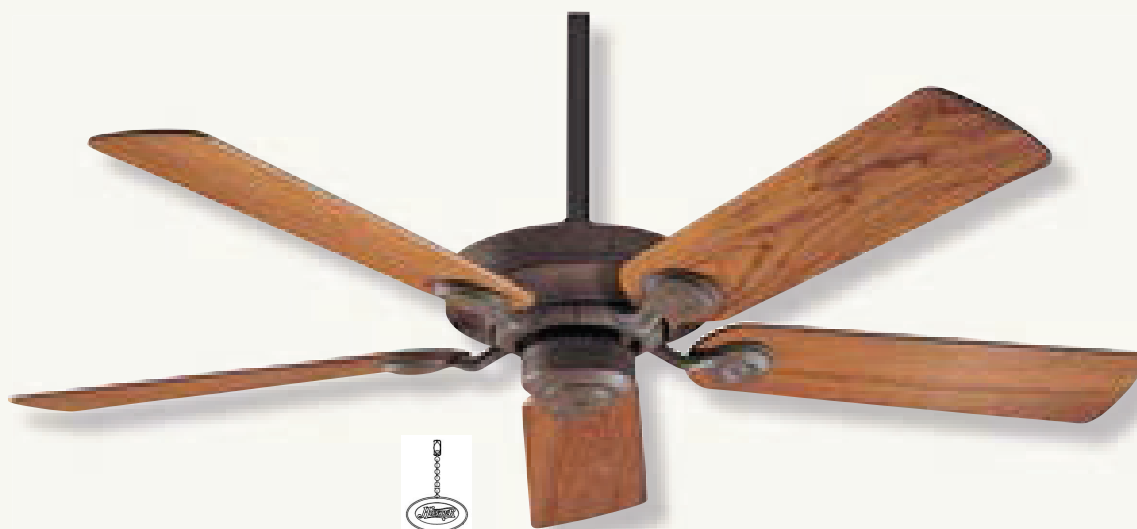
2 MOUNTING OPTIONS:

Standard • Angled Ceiling (up to 34 degrees)

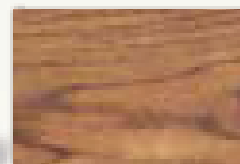


Note wall and remote control available as an accessory

OUTDOOR ELEMENTS II



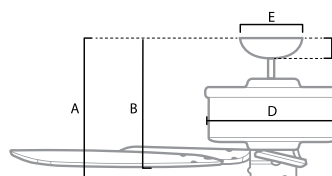
24324
Weathered Brick finish
with 5 Solid Teak blades



Solid Teak

ENERGY INFORMATION		
Airflow	10,539	CMH at high speed
Electricity Use	53	Watts at high speed
Airflow Efficiency	199	CMH/Watts at high speed

DIMENSIONS AND MEASUREMENT (in centimeters)			
	STANDARD	ANGLED	FLUSH
A	35.66	119.48	-
B	31.45	115.27	-
C	9.42	9.42	-
D	29.21	29.21	-
E	16.28	16.28	-



FEATURES
<ul style="list-style-type: none"> • IP44 rating • Aluminium housing with stainless steel hardware • Light kit adaptable

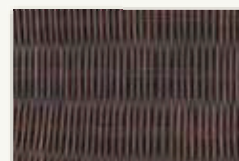


24323

New Bronze finish with 5 plastic Antique Dark Palm Leaf/Antique Dark Wicker reversible blades



Antique Dark Palm Leaf



Antique Dark Wicker

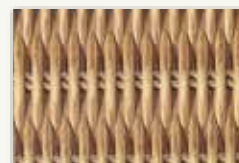


24325

Raw Aluminum finish with 5 plastic Natural Palm Leaf/Natural Wicker reversible blades



Natural Palm Leaf



Natural Wicker

ENERGY INFORMATION

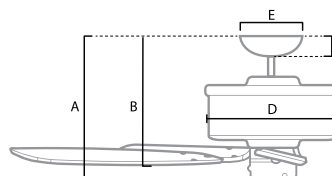
Airflow **9,124** CMH at high speed

Electricity Use **53** Watts at high speed

Airflow Efficiency **172** CMH/Watts at high speed

DIMENSIONS AND MEASUREMENT (in centimeters)

	STANDARD	ANGLED	FLUSH
A	35.66	119.48	-
B	31.45	115.27	-
C	9.42	9.42	-
D	29.21	29.21	-
E	16.28	16.28	-



FEATURES

- IP44 rating
- Aluminium housing with stainless steel hardware
- Light kit adaptable

