

Toyota 1ZZ/2ZZ Adaptor Kit – CEV5154

CEV5154



Overview

All adapters retain use of original clutch and fit most NetGain Hyper9, WARP 9 and HPEV AC34/AC35/AC50/AC51 Motors. Some adapter plates may have more or less bolt holes than your make and model of vehicle requires. As some adapters span a broad range of model years the adapter is designed to have enough bolt holes to be compatible with all model designs.

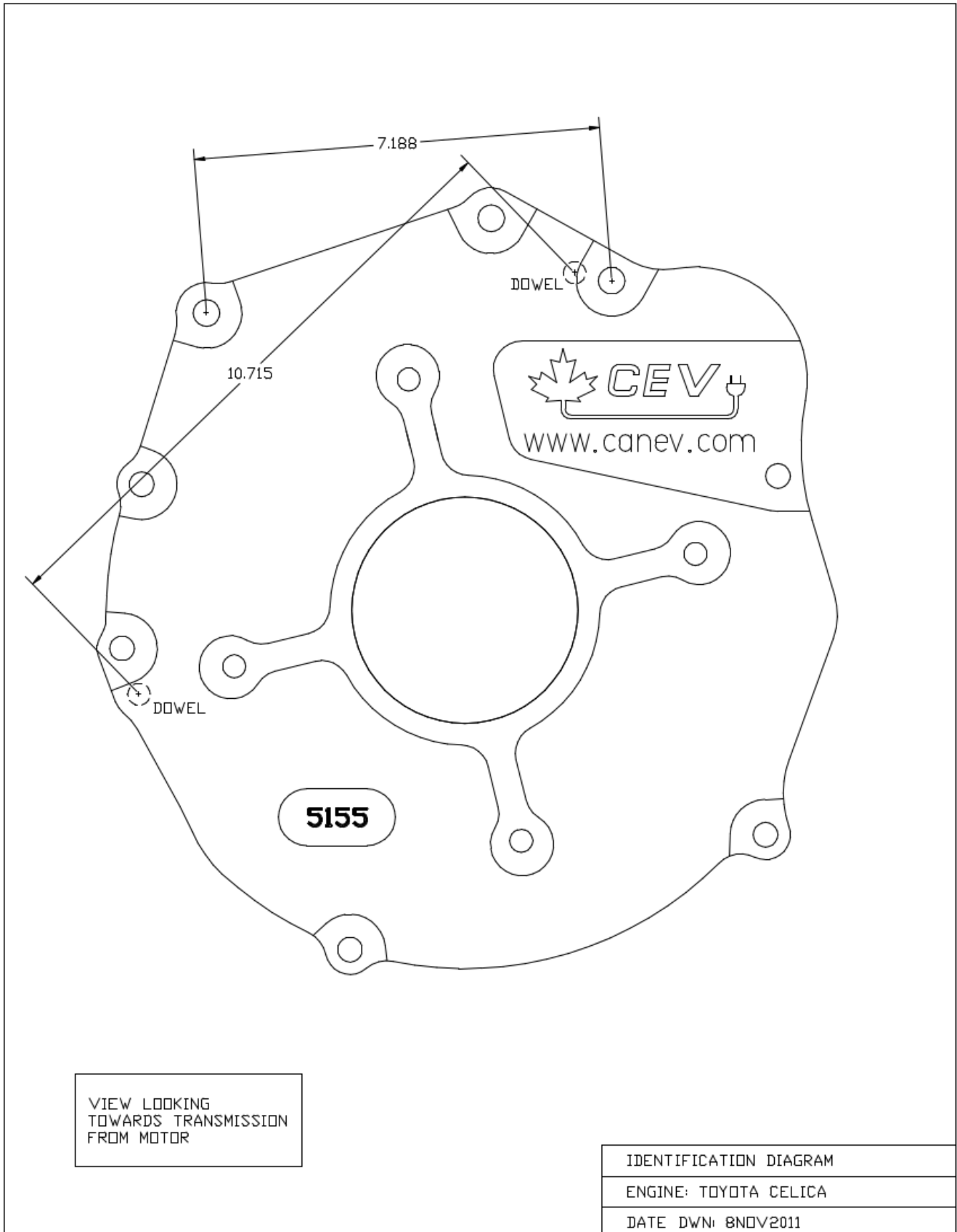
Specifications

- All adapter kits come with required hardware
- If using a HyPer9 motor, you may also need a shaft collar spacer, which is included

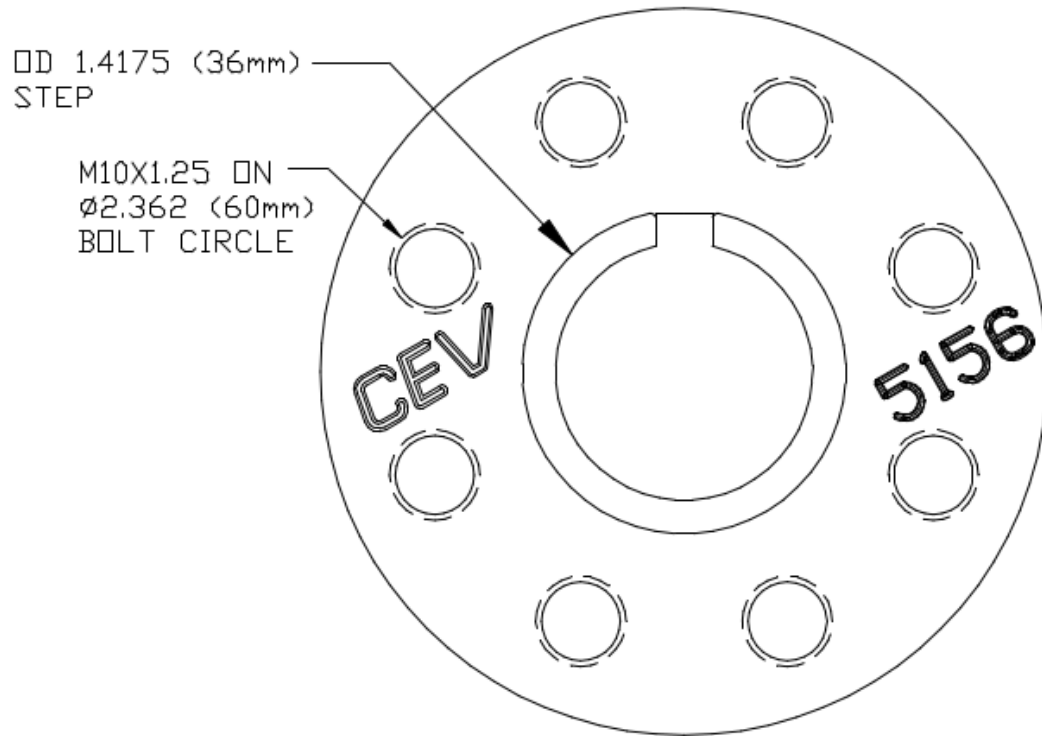
Compatible Vehicles – Toyota 1ZZ/2ZZ Adaptor Kit CEV5154

- Toyota Corolla CE/LE/S, Fielder, Runx (Japan), Altis (Asia)
- Toyota Allion
- Toyota Premio
- Toyota Vista and Vista Ardeo
- Toyota WiLL
- Toyota Caldina
- Chevrolet Prizm
- Pontiac Vibe
- Toyota Celica GT
- Toyota Matrix XR
- Toyota Avensis
- Toyota Opa
- Toyota Isis
- Toyota RAV4
- Toyota Wish
- Toyota Celica SS-II
- Toyota Celica GT-S
- Toyota Celica 190/T-Sport
- Toyota Corolla Sportivo
- Toyota Corolla TS
- Toyota Corolla Compressor
- Toyota Corolla XRS
- Toyota Corolla Fielder Z Aero Tourer
- Toyota Corolla Runx Z Aero Tourer
- Toyota Corolla RunX RSi
- Toyota Matrix XRS
- Pontiac Vibe GT
- Lotus Elise
- Lotus Exige
- Lotus 2-Eleven

Dimensions – Toyota 1ZZ/2ZZ Adaptor Kit – CEV5154



Dimensions – Toyota 1ZZ/2ZZ Adaptor Kit – CEV5154 (cont.)



VIEW LOOKING
TOWARDS MOTOR

HUB IDENTIFICATION DIAGRAM

ENGINE: TOYOTA CELICA

DATE DWN: 29JUL2012