

Nissan L16, L18, L24, L26, L28, Z22, Z24 Adaptor Kit – CEV5115

CEV5115



Overview

All adapters retain use of original clutch and fit most NetGain Hyper9, WARP 9 and HPEV AC34/AC35/AC50/AC51 Motors. Some adapter plates may have more or less bolt holes than your make and model of vehicle requires. As some adapters span a broad range of model years the adapter is designed to have enough bolt holes to be compatible with all model designs.

Specifications

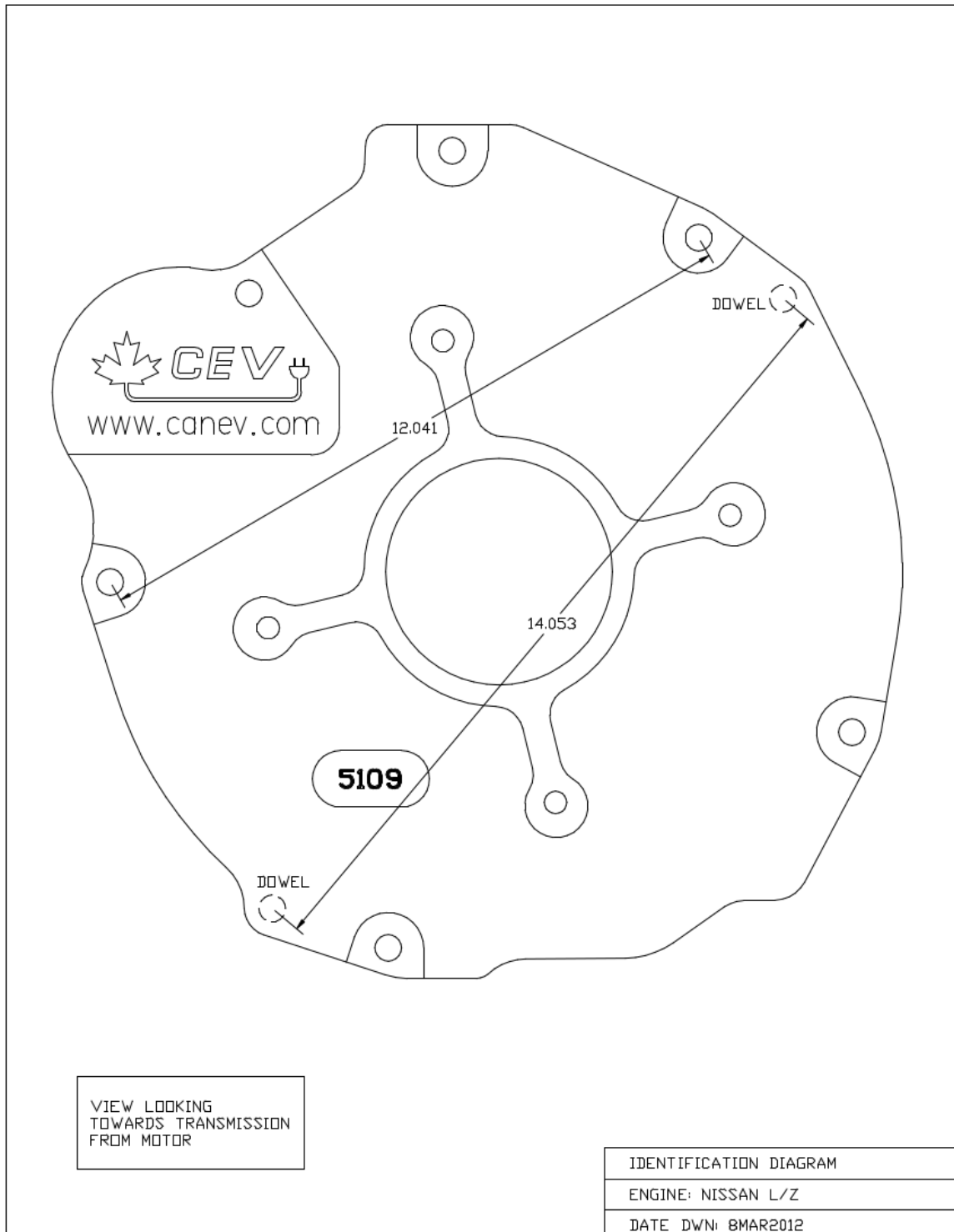
- All adapter kits come with required hardware
- If using a HyPer9 motor, you may also need a shaft collar spacer, which is included

Compatible Vehicles – Nissan L16, L18, L24, L26, L28, Z22, Z24

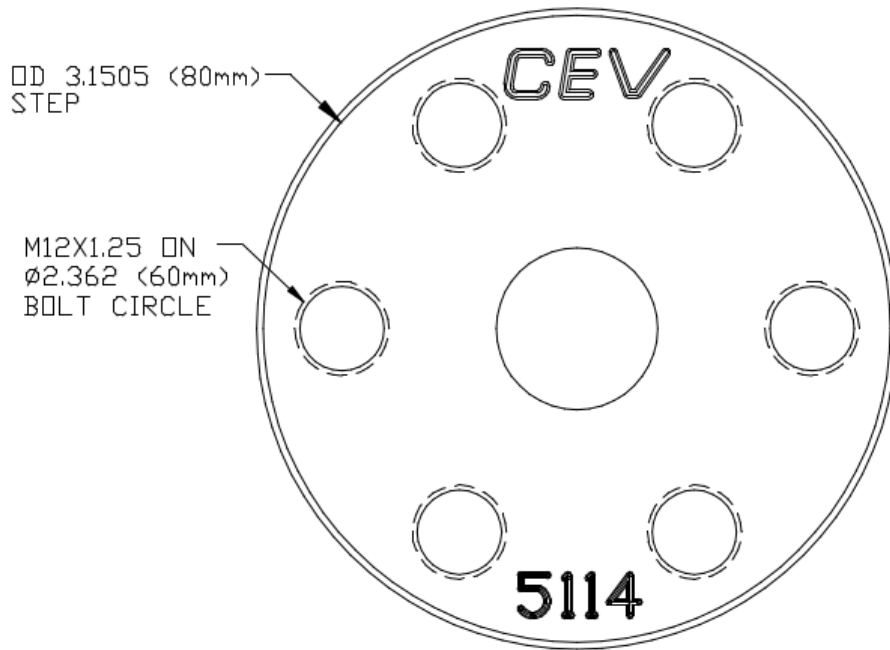
Adaptor Kit CEV5115

- 1968–1973 Datsun 510
- 1970–1972 Datsun 521 pick-up
- 1971–1977 Nissan 160B sedan (610)
- 1972–1973 Datsun 620 pick-up
- 1973–1977 Nissan Violet/Datsun 160J (P710/P711)
- 1977–1978 Nissan Violet/Auster/Stanza/160J (A10)
- 1971-1976 Nissan Bluebird/Datsun 180B
- 1973 Nissan Bluebird/Datsun 1600 SSS (P510)
- 1973 Datsun 610
- 1974 Datsun 620 truck
- 1974 Datsun 710
- 1975–1979 Nissan Silvia/Datsun 180SX (S10)
- 1979–1981 Nissan Silvia/Datsun 180SX (S110)
- 1980–1986 Datsun 720 (Middle East)
- Datsun 810
- 1970–1973 Datsun 240Z
- 1970–1971 Nissan Cedric/Gloria 130
- 1970–1972 Nissan Skyline 2400 GT (C10)
- 1971–1972 Nissan Cedric/Gloria 230
- 1972–1977 Datsun 240K (C110)
- 1978–1981 Datsun 240K-GT (C210)
- 1979–1980 Nissan C230 C230
- 1980–1984 Nissan C31
- 1977–1980 Datsun 810
- 1981 Datsun 810
- 1981–1985 Nissan Skyline R30
- 1982–1983 Datsun Maxima
- 1984 Nissan Maxima
- 1984–1990 Nissan Laurel C32
- 1972–1975 Nissan Cedric (230 Series)
- 1974–1977 Nissan Laurel (C130)
- 1974 Datsun 260Z
- 1976–1978 Nissan Cedric (330 Series)
- 1975–1977 Nissan Laurel C130
- 1977–1979 Nissan Gloria 330
- 1978 Dome Zero
- 1978–1979 Nissan Cedric 330
- 1980–1989 Nissan Patrol 160
- 1982–1987 Datsun/Nissan Skyline R30 (South Africa)
- 1986–2002 Nissan Patrol 260
- 1981-1982 Datsun 720
- 1981-1983 Datsun 200SX
- 1983.5-1986 Nissan/Datsun 720
- 1986 Nissan/Datsun 720 (Z24i) (ST models only)
- 1986-1989 Nissan Hardbody Truck (Z24i)
- 1986-1989 Nissan pathfinder (E model only)
- 1987-1990 Nissan Vanette/Nomad

Dimensions – Nissan L16, L18, L24, L26, L28, Z22, Z24 Adaptor Kit CEV5115



Dimensions – Nissan L16, L18, L24, L26, L28, Z22, Z24 Adaptor Kit CEV5115 (cont.)



VIEW LOOKING
TOWARDS MOTOR

HUB IDENTIFICATION DIAGRAM
ENGINE: NISSAN L/Z
DATE DWN: 29JUL2012